



NZ

Ethical

Employers

Fair, Ethical & Legal Employment
of Young People

September 2023

NZ Ethical Employers Inc

- The not-for-profit organisation was formed in association with the Labour Inspectorate and launched by then Minister of Immigration Shane Jones in March 2008.
- A re-launch in '22 gave NZEE an updated vision and mission, name & logo
- Members now employ over 34,000 workers across NZ
- They cover over 49,000 ha of fruit, veges, nuts and wine-grapes
- Members place workers' voice, and human rights, at the heart of business
- NZEE currently supports employers in hort and vit, with an intention to expand into other primary sectors



NZEE Foundational Principles Empower Human Rights and Fairness in the Workplace

Members can demonstrate New Zealand and global best practise in respecting internationally recognised Human Rights, including Labour Rights, that enables supply chain integrity and market acceptance of the products of the Aotearoa New Zealand primary sector

UNITED NATIONS GUIDING PRINCIPLES on Business and Human Rights (UNGPs)



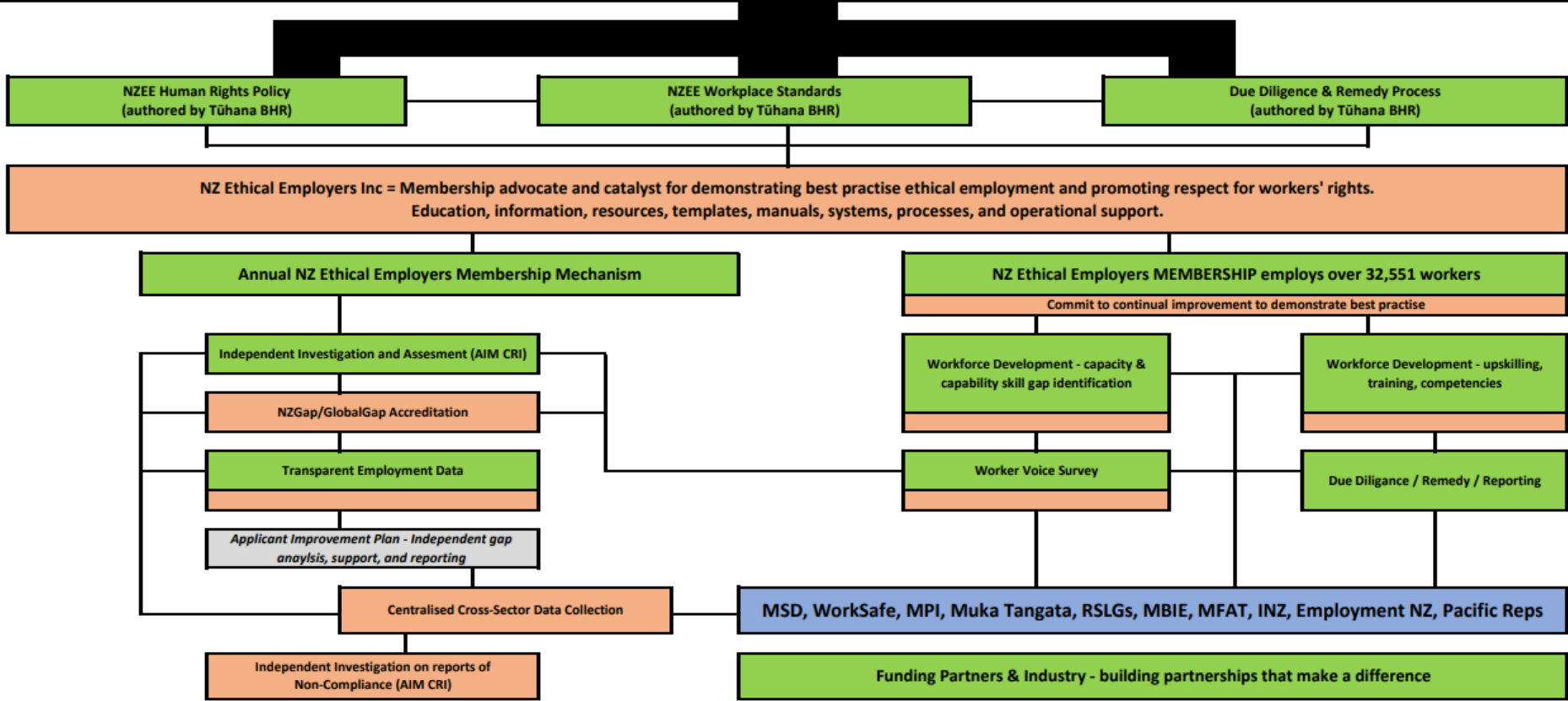
OECD-FAO Guidance for Responsible Agricultural Supply Chains

The **OECD-FAO Guidance for Responsible Agricultural Supply Chains** provides a common framework and globally applicable benchmark to help agri-businesses and investors contribute to sustainable development to identify and mitigate adverse impacts. The guidance is relevant for all enterprises across the entire agricultural supply chain, from the farm to the consumer across a wide range of food and non-food commodities.



NZ ETHICAL EMPLOYERS INC. MEMBERSHIP AND COMPLIANCE FRAMEWORK

UNITED NATIONS GUIDING PRINCIPLES on Business and Human Rights (UNGPs) & OECD-FAO Guidance for Responsible Agricultural Supply Chains



OUTCOME : NZEE members demonstrate NZ & international best practise in respecting internationally recognised Human Rights, including labour rights, that enables supply chain integrity & market acceptance of the products of the Aotearoa New Zealand primary sector



63,417 domestic students left school in 2021

56.6% of 15–19-year-olds went into work
83.3% of 20-24-year-olds went into work

SOURCE : MOE Education Indicator School Leaver Destination 2022

MORAL & LEGAL

I N C L U S I O N

A C C E P T A N C E

E Q U A L I T Y







Collaboration
is key

NZEE

YEA Symposium 2023

EMPOWERING
ETHICAL
EMPLOYMENT

