



Spectrum

Autumn 2023 | Issue 107



Magnetic Stator Wedges

– Identifying Problems and Solutions

Torsional-Lateral Coupled Vibration in Integrally Geared Compressors



PEOPLE AND THEIR SKILLS
DRIVING INDUSTRY

Conference '23

VANZ

Trinity Wharf, Tauranga

May 9th–11th





WAITES



WIRELESS

TRANSFORMING PREDICTIVE MAINTENANCE



ELIMINATE DOWNTIME

Tri-axial X, Y & Z up to 11.2kHz

Full-Spectrum vibration, temperature and other metrics

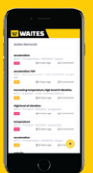
Powerful analytical tools for vibration experts

70,000+ Bearing database

Custom alarm notifications to **unlimited** user group

Cellular Network. **NO** I.T. involvement

COLLECT ANALYSE DIAGNOSE ACTION



Free up your maintenance team. Detect & Diagnose issues earlier with WAITES



GVS

RELIABILITY PRODUCTS

make it reliable.

+61 (0) 2 4925 2701
sales@gvsensors.com.au
www.gvsensors.com.au

Spectrum

INSIDE THIS ISSUE >

Features

Skills and Practices

Key Length Considerations

12

Articles

Problems and Solutions with
Magnetic Stator Wedges

14

Identify Root Causes of Torsional-Lateral
Coupled Vibration in Integrally Geared
Compressors

20

Regulars

From the president

8

Editor's report

10

Test your knowledge

26

Puzzle corner

28

Missed an issue?

Simply scan the QR code here to link your device
directly to the VANZ website. There you will find
Spectrum issues available to view or download*.

*QR code reading app need on your device first.



Issue 107

Web Site: www.vanz.org.nz

Conference paper submissions

> papers@vanz.org.nz

Spectrum is published quarterly in a digital medium and printed twice yearly by the Vibration Association of New Zealand (VANZ). The magazine is designed to cover all aspects of the Vibration, Condition Monitoring, Reliability and the wider Predictive Asset Management field and distributed to all VANZ members, including corporate members.

Contributions to Spectrum are welcome.

Address material to:
Angie Hurricks
Spectrum Editor
c/o 358 Waerenga Road,
R.D.1, Te Kauwhata, 3781
Waikato, New Zealand
or email: spectrumeditor@vanz.org.nz

Address all VANZ correspondence to:
VANZ
PO Box 2122,
Shortland Street,
Auckland

Editor: Angie Hurricks
Ph 021 239 4572
> spectrumeditor@vanz.org.nz

President: Tim Murdoch
> Timothy.Murdoch@ballance.co.nz

Treasurer: Graeme Finch
> G.Finch@auckland.ac.nz

Design: Eddie van den Broek
Flashpoint Design and Marketing
> info@flashpoint.design

Statements made or opinions expressed in Spectrum are not necessarily the views of VANZ or its Officers and Committee.



ISSN 1173-793X



VANZ
PRESENTS

Conference '23

'PEOPLE AND THEIR SKILLS DRIVING INDUSTRY'

Trinity Wharf Hotel Tauranga

MAY 9TH, 10TH, and 11TH 2023

Proudly sponsored by



PRICING AND PACKAGE OPTIONS

1-Day Registration

TUE, MAY 9TH

All conference pricing excludes GST.

Package	PRICE PER PERSON
Condition Monitoring Hands On	\$350
Condition Monitoring Hands On – Attendance to verified apprentices / trades trainees / university	FREE! FREE
Asset Management	\$350

2-Day Registration

WED, MAY 10TH – THU, MAY 11TH

Package	PRICE PER PERSON
2-Day Conference – Includes option to register for the full-day Electrical Masterclass stream. (Wednesday)	\$900
2-Day Conference – Attendance to verified apprentices / trades trainees / university	50% OFF! \$450

3-Day Registration

TUE, MAY 9TH – THU, MAY 11TH

Package	PRICE PER PERSON
3-Day Conference – Includes option to register for the full-day Electrical Masterclass stream. (Wednesday)	\$1,050

Book all conference packages online at www.vanz.org.nz

or scan the QR code to link directly to our booking site.

Note. Day 2 and 3 registrations includes the annual dinner for the delegate.

There will be provision for extra annual dinner attendee purchases at \$125 per person.

Complimentary parking at available at the venue. All conference papers will be available to download from www.vanz.org.nz.
One year membership with VANZ is included with Main Conference attendee pass.



For further info or to secure your position please contact our conference team: email us at conference@vanz.org.nz

VANZ
www.vanz.org.nz

EXHIBITOR OPTIONS

Package	Gold	Silver	Bronze
Price	\$3,050	\$2,200	\$1,600
Naming rights of conference			
Primary sponsorship on key online & offline promotional material before and during conference*			
Official role at the opening of the conference and five minute speaking opportunity			
Trade stand that offers sponsors the opportunity to showcase products, services and ideas	Premium	Standard	Table
Signage opportunities at conference & dinner			
Pre conference Spectrum advertising opportunities (early registrations only)	✓		
Acknowledgement as sponsor & vendor	✓	✓	
Company literature in delegates goodie bags	✓	✓	
Brand on conference programme (early registrations 1 month before event)	✓	✓	✓
Sponsorship on key online & offline promotional material before and during conference**	✓	✓	✓
Logo on VANZ conference publications & website***	✓	✓	✓
Post conference Spectrum advertising opportunities	✓	✓	
Conference entry for staff	x2	x1	x1

Booth size (Platinum and Gold)	1.8 x 3.0 metres
Booth size (Silver)	1.2 x 2.4 metres
Table top size (Bronze)	1.8 x 0.6 metres

Website* Animated landscape panels @ 460px wide x 200px high
 Website** Animated landscape panels @ 460px wide x 200px high – x1
 Logo file*** To be supplied as either a vector eps or hi res tif/png/jpeg
 Files to be supplied to specifications.

Further Sponsorship Options

Lanyard sponsor	\$500 + lanyards	Dinner sponsor	POA
Bag sponsor	\$500 + bags	Informal Welcome Event (Tues night)	\$2,000

Note. All exhibitors have the annual dinner included for the number of delegates associated with the respective category. Example: Gold 2 delegates, Silver 1 delegate, Bronze 1 delegate. There will be provision for extra annual dinner attendee purchases at \$125 per person.

ACCOMMODATION

For the conference, we've secured rooms at Trinity Wharf Tauranga for a great rate if you need to book accommodation separately, but it's only for a limited time and availability will reduce closer to the conference date.

Phone Trinity Wharf on **07 577 8700**, visit www.trinitywharf.co.nz or scan the QR code to link directly to their booking site.

Be sure to use the code **VANZ** for a great deal!



MEMBERSHIP

Full year membership for 2023/24 is still only \$100/pp

It's easy to renew! Visit www.vanz.org.nz

If you purchase a Main Conference attendee pass, your membership for the next 12 months is automatically included and updated in that price.



For further info or to secure your position please contact our conference team: email us at conference@vanz.org.nz



A Special 1-Day Training Event!

Electrical Masterclass Knowledge for Mechanical, Condition Monitoring and Electrical Personnel

Hosted by internationally renowned speaker Mike Davis



Note: This will run as a complete second stream option on Day 2 - Wednesday 10th May, 2023. Limited to 30 spaces.

Masterclass outline

The Masterclass aims to provide attendees with the tools they need to describe and identify the functions of electrical machine components, various insulation types in stator and rotor windings, failure mechanisms common to electric machines, and electrical tests sensitive to specific failure mechanisms.

Additionally, attendees will learn;

1. to undertake a visual inspection on an Inservice motor following standard protocols
2. describe a typical core inspection procedure.
3. identify common symptoms of failure mechanisms and their effects on the reliability of electrical machines
4. understand safe working practices when undertaking maintenance on electrical apparatus.

Registrants receive:

- Course practical workbook (12 practical exercises, completed by small teams during the day)
- Course notes (180 pages)
- Individual access to the "Evergreen" online course.

(25 electric machine topics over 8 hrs)

- Online Assessment (optional for completion of online component)
- Textbook. "Mike's Motor Minutes – 101 Electrical Machine Stories".

Certification

- Certificate of attendance for masterclass
- Certificate of completion for successful completion of online components.

WED, MAY 10TH 2023

Duration: 7.5 hours
Registration: Strictly limited to 30 spaces
Price: Included as part of the 2-Day and 3-Day registration fee.

* Conditions apply.

**THERE IS LIMITED SPACES AVAILABLE!
AVOID DISAPPOINTMENT... BOOK NOW!**

➔ **There is also a strictly limited amount of spaces available for trainees or apprentices – FREE of CHARGE!**

Visit www.vanz.or.nz or scan the QR code on the right to see if you qualify!



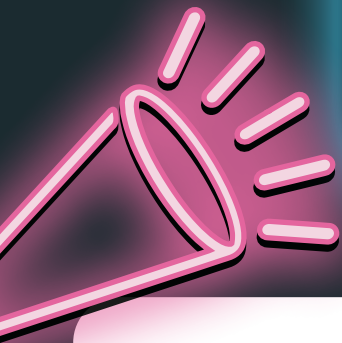
With over 40 years experience in rotating equipment, essentially centred on the repair, redesign and maintenance of electrical rotating plant. Mike has developed an intense academic interest in machine failure mechanisms and root cause analysis of electrical machinery failure and has presented papers throughout Australia, New Zealand, United States of America, South East Asia and South Africa.

Visit www.emkecoach.com to find out more.



EMKE
Electrical Machine Knowledge Exchange

THIS IS A CALL!



We're encouraging new people to present papers at our 34th annual conference this year.

We're specifically looking for people who are non-professional presenters.

People who work at the forefront of our industries, and deal with day to day data collection and analysis. This could be **VANZ members, associates, customers, practical / or hands-on practitioners, engineers, analysts or similar**. The papers ideally need to be 15min in length or longer – it's up to you. You could do a solo presentation, or you could even team up and do it as a small group!

↓ **Interested? Let us sweeten the deal!** ↓
In return, VANZ is offering our first time speakers...

FREE 2-day Attendance WORTH UP TO \$900!	Full support from VANZ Committee
<ul style="list-style-type: none">• Free 2-day conference registration for non-professional / first time paper presenters.	<ul style="list-style-type: none">• Assistance with Powerpoint slideshows, and format / timing of your presentation(s).

Why not give it go?

Contact us today to find out more.

Email us at: papers@vanz.org.nz





PRESIDENTS' REPORT

By Tim Murdoch, VANZ President

2023 has certainly had a volatile start to the year with cyclones, floods and other crazy events which have made living and working conditions very challenging in many places around the country. I do hope those of you affected by these events are able to get the assistance you require and have a quick recovery.

VANZ conference 2023 is not far away and the committee are doing an amazing job organising every aspect of the conference. Thank you GVS for your amazing support this year and to all exhibitors that have confirmed their attendance. Our line up of speakers for the conference and dinner this year is world class including Andrew Gale, Chris Hansford, Dare Petreski, Dr Iain Epps, Barry Robinson, John Clynes, Dr James Neale and Alex Lawrence.

As a welcomed change to this years conference Mike Davis will be running a full day Masterclass on

Electrical Machine Familiarisation designed for Condition monitoring, electrical and mechanical personnel. If this is something that takes your interest be sure to check out the programme outline on the VANZ website and book in early as there are limited numbers available for this course.

“ VANZ conference 2023 is not far away and the committee are doing an amazing job organising every aspect. ”

We are looking forward to catching up with as many of you as possible. It is a great opportunity to learn and network with others in the same areas of interest. If you haven't already, go to www.vanz.org.nz and register your place at the conference and Mikes motors master class. Accommodation is limited at Trinity Wharf so get in quick and use the code word VANZ to get a better rate.

Looking forward to seeing you all there. ■

IT'S TIME FOR LESS DOWNTIME.

Facing the following machine issues?



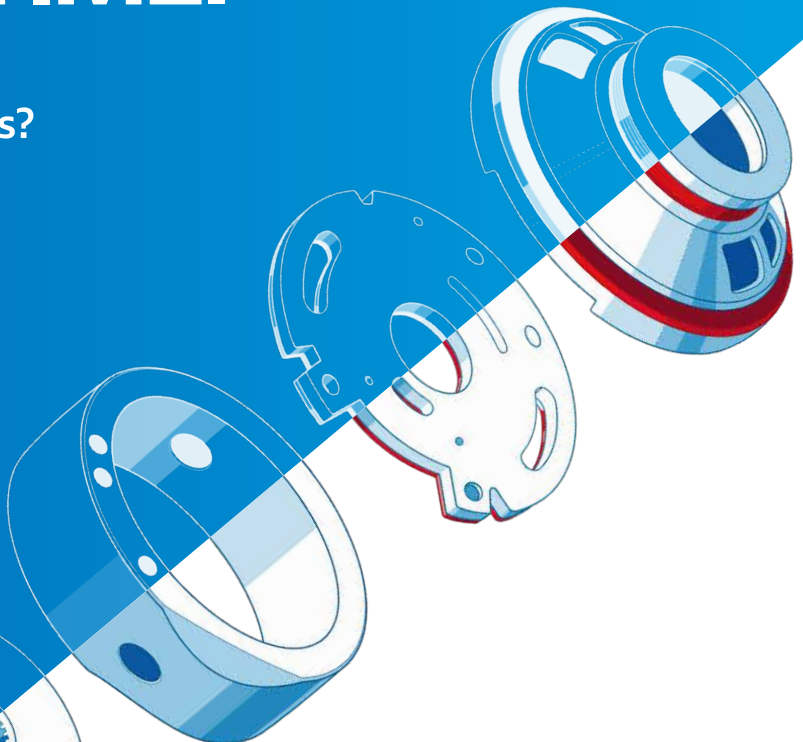
High oil consumption



Malfunction due to deposits formation



Pump failure and component wear



Breakthrough technology that keeps moving parts moving.



2X Oil Life*



72% Better Wear Protection**



89% Better Deposit Control†



MOBIL DTE™ 20 ULTRA SERIES

Decreased downtime with extended:

- Component life
- Oil drain intervals
- Filter life

Disclaimer: *Mobil DTE 20 Ultra Series oils have demonstrated up to 2 times longer oil drain intervals versus similar competitive oils (ISO VG 46 with a viscosity index around 100 and a zinc-based anti-wear system - meeting at least ISO 11158 (L-HM) and/or DIN 51542-2 (HLP type) requirements) in demanding Mobil Hydraulic Fluid Durability (MHFD) testing. **72% lower wear than maximum limit for motor wear in BR RFT APU CL test (ISO VG 32). †89.2% lower sludge formation than maximum limit of ASTM D 6158 by using ASTM D 2070 method (ISO VG 68).

IN MEMORIAM

Patrick Bridson

17 July 1950 – 23 December 2022

The VANZ community would like to pass on their condolences to Patrick's extended family during this difficult time.

Not many people may know, but Patrick was actually one of the founding members of VANZ.

Patrick will be missed by many. ■



EDITORS' CORNER

Greetings readers! Conference time is rolling around again and VANZ is a hive of activity planning this years' symposium so all who attend can benefit and take away new information and techniques not to mention the latest gadgets to roll out in to the field.

Our conference committee have got a lot in store for us this year as always and our main sponsor this year is GVS! You can register online at www.vanz.org.nz/conference-2023 check out the website for more updates as conference gets closer and you can also register a sponsorship package.

Many thanks go to all those who are helping to sponsor the event this year with a variety of different support, from trade-stands and networking nights to afternoon teas and lanyards. Also to our continued advertisers who are much appreciated and are all an important part of keeping VANZ going.

In this issue you can read through an article by Mike Davis from EMKE, titled Problems and Solutions with Magnetic Stator Wedges, he'll be conducting a special 1-Day only training event at the conference – the Electrical Masterclass. Also there's an article by Roengchai Chumai from Machinosis Company Limited, titled Identify root cause of torsional-lateral coupled vibration in integrally geared compressor.

Browse through the update from the President's Report by Tim Murdoch, he gives us an idea of what to expect from this years' conference. If you want to puzzle your grey matter then flip through to Carl's Quiz and see how well you score on the latest questions! ■





Brüel & Kjær Vibro

A member of the NSK Group

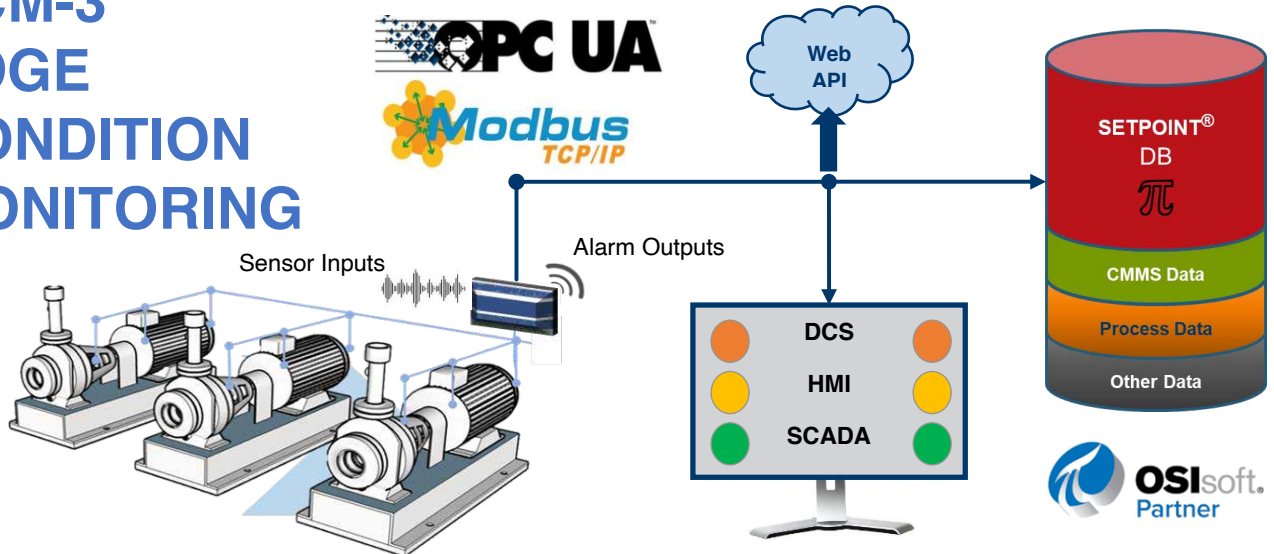
ASSET HEALTH MONITORING FOR OPERATIONS AND MAINTENANCE



VCM-3 – Project Machine Health to Maximize Uptime



VCM-3 EDGE CONDITION MONITORING



For more information, please refer to BKVibro Website:

<https://www.bkvibro.com/product/vcm-3/>

Enquire Now: sales@cse-waf.nz

Key Length Considerations

One simple way of practicing PRECISION in our workplace is to ensure that we use keys of the correct length. Keys that are too long or too short are DEFECTS that cause our machines to be out of balance. This causes the machines to vibrate and leads to shorter seal and bearing life.

The best solution for PRECISION is to use a step key, where almost all of the mass of the keyway is replaced. Only the small curved section at the end of the keyway is missing. The next best solution is to use a full height key where its Length is determined by the following simple formula : $\text{Length} = (A + B) / 2$.

Where A is the full depth length of the keyway. This means that the key fills half of the exposed section of keyway in the shaft.

In this way, the mass of the proud section of key is equal to the mass that is missing from the keyway. These types of key configurations (see fig. 3) are NOT ACCEPTABLE because they are not balanced!

To complete the picture, it is necessary to have the correct orientation of pairs of keys (see fig. 4).

Note that the keyways are at 180 degrees to each other. This is to ensure that any errors in key and keyway length balance each other out. When sending shafts out for balancing, the shaft should be balanced with a full length half key, while rotors should be balanced with a key as shown above.. ■

Fig. 1

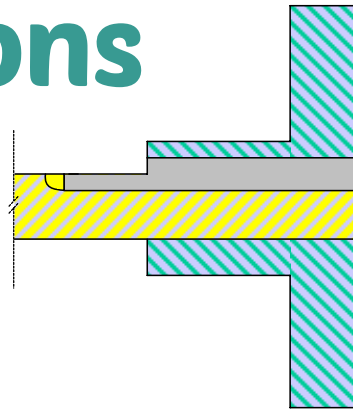


Fig. 2

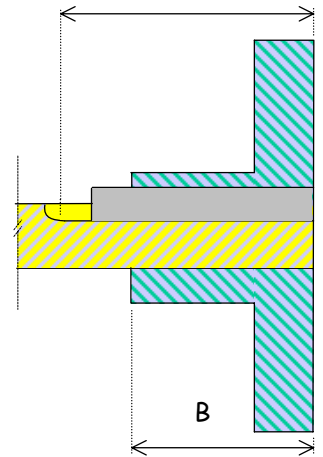


Fig. 3

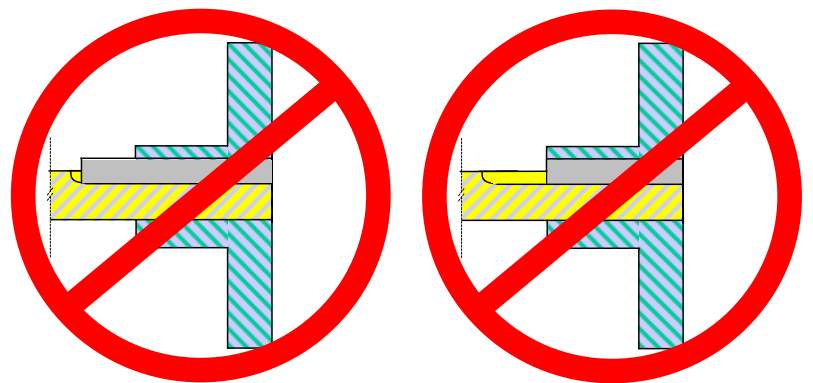


Fig. 4

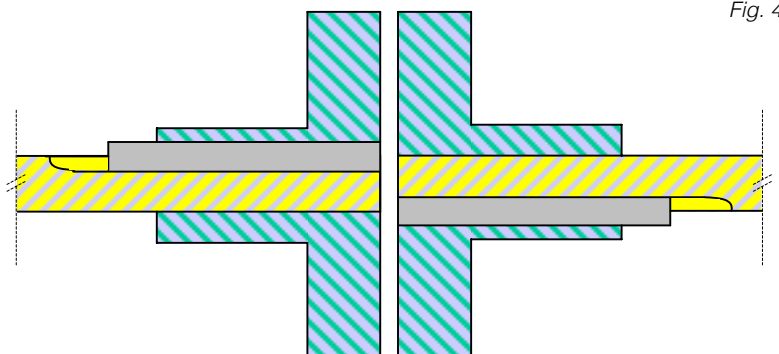
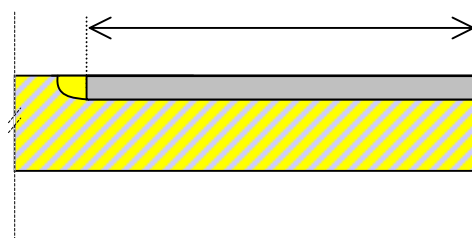


Fig. 5



LE Reduces ENERGY & WASTE OIL disposal costs in Air Compressors



US Company Saves \$20K+ in Energy Savings Pilot Program

Challenge:

A US company needed to improve its lubrication practices to enhance the company's sustainability efforts. The company's rotary screw compressor and centrifugal compressor were set to be drained annually with no regard for the condition of the oil. They were not set up on an oil sampling program, nor was the oil filtered to keep out contaminants. Effective implementation of lubrication reliability best practices can save energy, minimize maintenance costs by extending drain intervals, and improve the reliability of the equipment.

LE Solution:

The energy savings were quantified by using an Amprobe® device, which measures the amount of electricity flowing through the power lines to the machine. The meter was attached to the load side of the VFD (variable frequency drive) to have an accurate reading of how much electricity the compressor was using. The amount of electricity logged was converted to British thermal units (Btu). All variables that could affect the results of the study were taken into consideration.

A synthetic oil that was in use was changed to a mineral-based oil. Oil sampling was implemented and filtration ports were added. Sampling enables predictive maintenance based on when an internal component might fail or when the oil might lose its additive properties and need to be replaced. Through sampling analysis, filtration opportunities can be identified that will remove contamination to extend the oil life and avoid a costly annual DFR (eight man-hours per machine).

Results:

- **Energy Savings** – The fluid friction difference between the old oils and the two new LE oils reduced the amp draw on each machine's motor. Based on amp draw results before and after the lubricant switch, the company estimated its annual energy savings for the two compressors as **\$12,500.00**.
- **Oil Savings** – To compare the cost of the old vs new compressor oils, we included the purchase price as well as drain intervals. Extended drain interval savings are due to no longer having to perform an annual drain, flush, and refill process; savings were calculated based on a new five-year drain interval. Total annual oil savings for the two machines was **\$7939.00**.
- **Waste Oil Reduction** – A total of 50 gallons of waste oil annually will not need to be discarded until the next DFR – estimated at once every five years – meaning the company achieved a five-fold reduction in waste oil being discarded.

Total savings, not counting waste oil reduction amounted to \$20,439.00 per year.

**Chris from LENZ has an extensive background with Air Compressors
(Atlas Copco service engineer for 10+ years).**

View more case studies here <https://www.lubricationengineers.co.nz/testimonials>

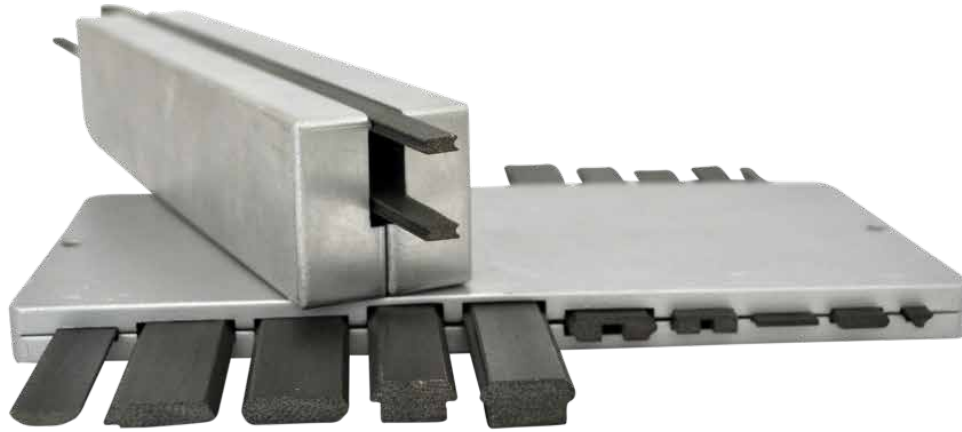


LUBRICATION ENGINEERS

New Zealand - 09 415 9411 - info@lubengnz.co.nz

"Cutting costs for industry through performance and service - Guaranteed"
www.lubricationengineers.co.nz





Problems and Solutions with Magnetic Stator Wedges

The use of magnetic materials for wedging induction motor stator windings has become more prevalent over the last decade. The move to the use of these materials has led to new reliability and maintenance challenges. This paper briefly discusses the function of stator wedging, the historical development of magnetic wedge material, the advantages of using magnetic wedges. Maintenance considerations for magnetic wedge integrity is also discussed.

Function of Stator Wedging

In large electrical machines the stator slots are opened to the width of the slot to allow the fitting of coils. The stator core laminations are punched in a manner to allow the fitting of wedges in rebated landings at the top of the slot. After coils are fitted and packed in the slots wedges are fitted in the slot landing. The purpose of the wedging is to restrain the coils in the slot against steady state bar forces (100Hz or 120Hz vibration) and transient bar forces (Starting forces are proportional to in-rush current squared).

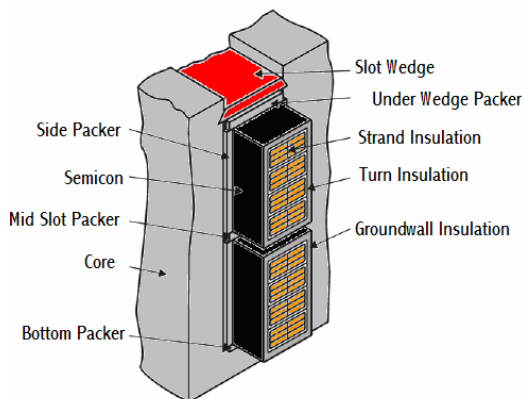


Fig. 1. Typical arrangement of wound stator slot.

Historically the material used for wedging has been non-magnetic - typically an epoxy glass laminated board machined to match the stator slot landing. Increasingly the epoxy laminate is being replaced with magnetic laminate.

Magnetic Wedging

The typical material composition of magnetic wedging is detailed in table below:

Typical Material Composition of Magnetic Wedges	
Iron	70.0 %
Glass Fabric	10.8 %
Binder	19.2 %

The use of this type of material changes the wedge from a magnetically passive characteristic to being magnetically active. As a result of this the normal wedging function of retaining the coils in the slot is changed to one of retaining coils and providing a low reluctance magnetic path across the opening on the top of the stator slot.

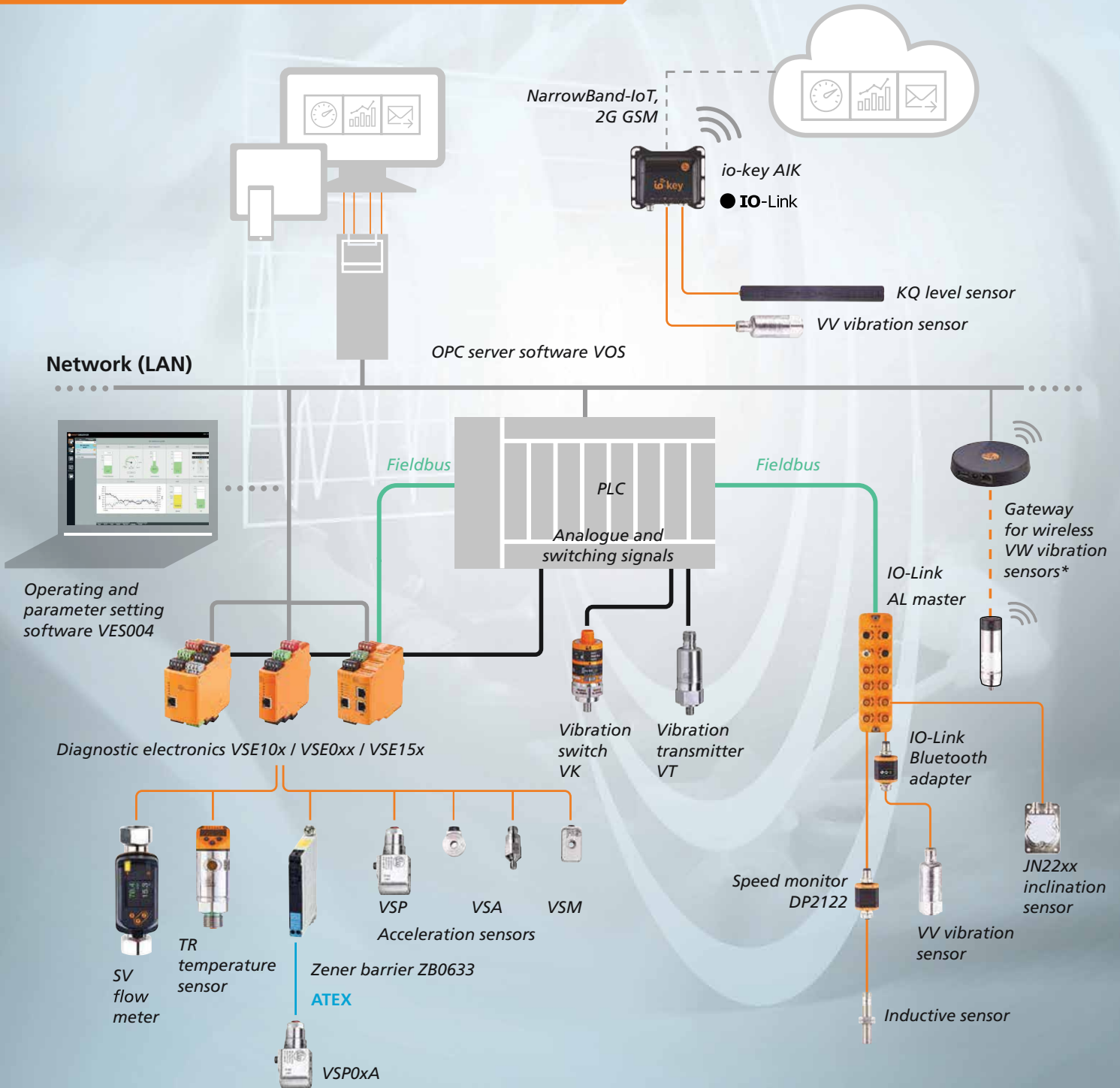
As a result of providing a magnetic closure on the top of the slot the following improvements are achievable;

Continued over page >

Plant Condition Monitoring Solutions



From Sensors to ERP



ifm offer a comprehensive range of industrial vibration and condition monitoring systems - ex-stock NZ! German quality - supported by local engineers, call us for advice on your machine requirements.

ifm - close to you!

www.ifm.com/nz ph: 0800 803 444

- Reduced core losses.
- Lower magnetizing current.
- Reduction in zig zag torque.
- Improved Efficiency.

The level to which these improvements are realised has wide variation and is dependant on case by case design parameters of the machine.

In modern machines it could be said that the addition of magnetic wedges is one way manufacturers can reduce the active material content of machines; the others being better insulation and smarter ventilation design. Studies have shown the net result of this trend of reducing active material content for given outputs has led to a 14 times reduction in mass of machines at given outputs in the period of 1920s to 1990s [1].

The machine performance benefits in life cycle power cost associated with using magnetic wedges can easily be lost in additional reliability costs associated with magnetic wedge failure particularly after re-wedging of machines [2].

Given magnetic wedges are subjected to un-remitting magnetic forces throughout operational life the challenge for designers is to apply wedges with considerations for material reluctance, flux densities and physical assembly to prevent looseness developing in service. Meeting this challenge has occupied designers since the 1920s. The figure below shows a magnetic wedging technique patented in 1945 by Fisher. Many such designs exist all aimed at ensuring the magnetic and restraining function of magnetic wedges are preserved throughout the operational life of the machine.

The modern magnetic wedge material design and application approach relies heavily on “gluing” the wedge in position with epoxy resin. The life limiter for wedge systems using this approach is the epoxy resin. In circumstances where localised temperature rise (hotspots) in stator cores occurs through high flux concentration the thermal aging of the wedge bonding epoxy is accelerated.

Epoxy based materials shrink with thermal aging. Once the bonding is compromised the wedges are free to move independently in response to the machine magnetic field. In circumstances such as this wedges vibrate and are progressively reduced to iron powder and debris due to the abrasive nature of the stator slot landings. One fix for this problem is to replace the magnetic wedge material with traditional non-magnetic material. The impact on machine performance in removing magnetic wedges and replacing them with non magnetic wedges range from

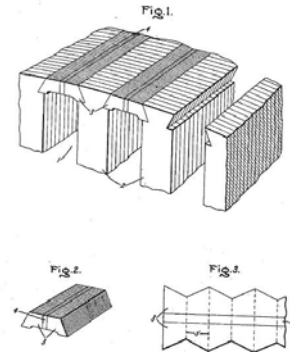


Fig. 2. Early magnetic wedge patent (US Patent No. 2 386 673)

no change [3] up to a 50% reduction in magnetizing current [4].

Detecting Failed Magnetic Wedges

Machines with failed magnetic wedges may display one or more of the following operational characteristics;

- Higher no-load current when compared to “type test” value.
- Increased temperature rise.
- Increase in Endwinding Discharge due to the presence of wedge material contamination on the stator endwinding (HV Machines).
- Increase in electrically excited vibration.

Due to the inconclusive nature of the above characteristics as an indicator of magnetic wedge failure it turns out that the most effective detection technique is a visual inspection. The visual evidence for failed magnetic wedges is;

- Ferrous contamination on the stator endwindings.
- Ferrous and glass matting debris in the base of the machine.
- Glass matting debris in the machine primary air circuit ducting.
- Missing wedge sections from the stator slots (predominantly in the middle of the stator slots).

Having detected failed magnetic wedging a maintenance choice needs to be made which can include only re-wedging slots where wedges have failed (Partial re-wedge), completely re-wedging the stator and replacing the wedge material with non-magnetic material. In either case significant reliability risk can result from what appears to be simple maintenance.

Maintenance Considerations

There are important considerations before attempting re-wedging maintenance where magnetic wedges are employed.

Continued over page >



The next step in your digital transformation just got easier!

Emerson's AMS Wireless Vibration Monitor is based on decades-proven technology that communicates using modern, cybersecure protocols. This is the wireless device that will extend your reliability program to an unprecedented number of plant assets – including those in hazardous or hard to reach areas – and deliver maximum visibility to asset health.

The unit features complete data acquisition – triax vibration with temperature and PeakVue measurements – to provide a sophisticated look at asset health on par with other online and portable monitoring options.

Ideal for deployment across your plant or enterprise, the AMS Wireless Vibration Monitor offers the following benefits:

- Automated machine monitoring with a lower total cost of ownership.
- Simple installation in about 5 minutes.
- Fleet management tools for fast configuration in the shop or in the field.
- Prescriptive analytics using patented PeakVue Plus to accelerate your diagnosis.

- Reduced time in the field – more time to recommend maintenance actions.
- Rapid ROI with lower installed cost and fast access to actionable information.
- Long 3-5 year life with an off-the-shelf battery collecting up to 4 waveforms per day.
- Battery replacement in the field – even in hazardous areas.
- Access asset health information on your mobile phone anytime, anywhere.

For More Information

The AMS Wireless Vibration Monitor is an integral part of the Emerson portfolio of portable and on-line machinery monitoring technology. Make it an integral part of your digital transformation journey today.

Visit our website at www.emerson.com/AMSVibrationMonitor, or contact your local Emerson representative.



AMS

Custom Controls

Phone +64 9 634 1391 | sales@customcontrols.co.nz

Emerson

Phone +64 9 441 0800 | emersonprocess.newzealand@emerson.com



These include;

Wedge removal – the removal of wedges is high risk maintenance particularly on windings which have been Vacuum Pressure Impregnated. The risk of causing impact damage to stator coil groundwall insulation needs to be evaluated. A low risk approach is to run a saw down the centre of the slot to a depth slightly less than the wedge thickness and collapse the wedge in toward the cut.

Wedge size – It is important when surveying the wedge dimensions that accurate measurements are made. The wedge dimensions should match the profile of the slot landing and maintain the original design thickness. The finished wedge size should allow for a neat fit in the landing whilst applying downward pressure on the coils in the slot.

Vented core – when wedging machines with vented cores attention should be paid to ensuring the wedges are notched at a location corresponding to core vent to ensure no ventilation restrictions occur.

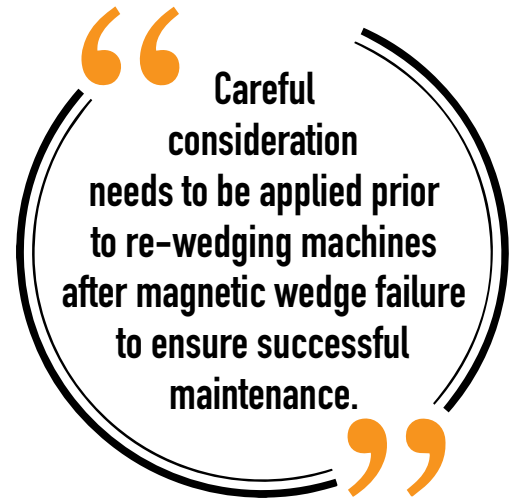
Lamination shuffle – When laminated stator cores are assembled all laminations never align in precisely the same location due to manufacturing tolerances. This results in what is termed lamination shuffle. When fitting wedges lamination shuffle can impact on the fit of the wedge in the slot. The uneven edge of the slot landing serves to take material off the wedge as it is dredged into the slot. The results of this problem can be observed in machines with failed wedges as most wedge portions fail in the centre of the slot – the location of wedges which have been dredged the greatest distance along the slot landing.

Slot length – When fitting magnetic wedges the less force required to fit the wedge the better. Force required to fit wedges can be reduced by reducing the length of the wedges. Careful consideration should be given to ensuring that wedges are fitted in short lengths. In vented cores the butted joints of wedge portions should always be positioned within the core packs.

Bonding material – The fit of magnetic wedges and downward force on the stator coils on their own are not enough to restrain magnetic wedges in the stator slots. To achieve bonding of the wedge to the slot landings epoxy resins need to be applied during the fitting of the wedges. The epoxy used in this application should be of appropriate thermal rating.

Conclusion

The utilization of magnetic wedging systems in induction motors is becoming more prevalent. The

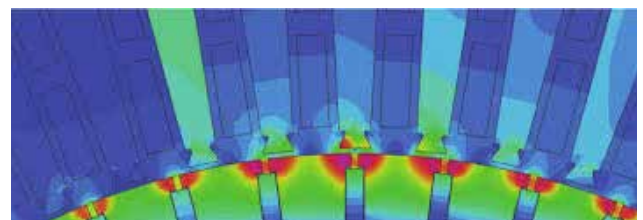


following conclusions are drawn from experience with magnetic wedge systems:

- Magnetic wedges compensate for deficits in active material content.
- The impact of magnetic wedges on machine performance varies on a case-by-case basis.
- Detection techniques for magnetic wedge failure are limited with visual inspection being the most useful.
- Careful consideration needs to be applied prior to re-wedging machines after magnetic wedge failure to ensure successful maintenance.
- Design efficiency gains through employing magnetic wedges can be a fraction of the reliability cost of failed wedges. ■

References

- [1] Glew, C.N "The Next Generation" –A Review of the Factors influencing the Output of an Electrical Machine in the New Millennium. INSUCON/ISOTE 'C '98 p231-242
- [2] Scollay & Stewart "The Real Cost of Magnetic Wedges in Improved Performance of Induction Motors" CWIEME 2007 - Berlin, Germany
- [3] Hanna, Hiscock & Klinowski "Failure Analysis of Three Slow Speed Induction Motors For Reciprocating Loads" IEEE Paper No. PCIC-2005-XX.
- [4] Magnatuff MDS "Case Studies" [http:// www.camawi.com](http://www.camawi.com). Retrieved 5th May 2007.



NEST Industry 4.0

A powerful predictive maintenance solution

Acoem NESTi4.0 is an advanced predictive maintenance solution for industrial facilities. This software platform provides comprehensive vibration analysis tools, intuitive features such as guided analysis and automated reporting, enabling businesses to achieve real-time condition monitoring for their entire plant or network.

What makes NESTi4.0 exceptional is the way it leverages Artificial Intelligence to facilitate machine learning, allowing it to learn from data patterns and provide better predictive maintenance recommendations over time. This leads to reduced maintenance costs, improved asset performance and increased efficiency.

With its user-friendly interface, powerful analysis tools and AI technology, NESTi4.0 is the perfect solution for any industrial facility looking to streamline its maintenance processes and maximise critical machinery lifecycles.



The only predictive maintenance and diagnostic tool you will ever need

- Accurex™ AI powered diagnostics
- Intuitive & quick setup with Machine Builder module
- Enhanced analysis productivity via Health Matrix
- Improved reporting productivity via Accurex™ Diagnostics
- Open data platform (OPC UA, CSV export).



Discover Acoem's proactive and predictive maintenance solutions:



MV-x

AI-powered system with real-time edge computing that pinpoints the source, direction and intensity of vibration



FALCON

The fastest and smartest tool for vibration measurement and analysis



EAGLE

The first wireless monitoring solution with automatic AI diagnostics



RT-300

Customisable app-based augmented mechanics ecosystem that combines vibration, laser lineage and thermography



NXA Pro

Digital laser-based shaft alignment system with advanced functionality and easy operation

Identify Root Causes of

Torsional-Lateral Coupled Vibration in Integrally Geared Compressors



This case study demonstrates detection of a torsional vibration problem which was observed as lateral vibration by way of torsional-lateral coupling. The unit is a six (6) stage integrally geared compressor driven by a single bull gear and 12 MW induction motor with a synchronous speed of 1500 rpm. There are three pinion rotors of feed stage 1 & 2 (20,156 rpm), recycle stage 1 & 2 (12,461 rpm), and recycle stage 3 & 4 (14,584 rpm).

Fluctuating vibration amplitudes were measured on the feed compressor (FC) stages during off-peak operation (after 22:00 hours each day) while a nearby steel processing plant is in operation, and disappears when its operation is stopped. Detailed vibration analysis was used to identify possible root cause of the fluctuating vibration and to find possible solutions.

The measured vibration at the FC rotor were predominantly at 22.5 Hz, which was found to be due to torsional-lateral coupled vibration through the gear mesh, induced by torque oscillations of the motor rotor. There is a significant relationship between FC fluctuating vibration amplitudes and oxygen consumption of an electric arc furnace (EAF) in the steel plant, hence, power consumption generated fluctuating motor supply current which resulted in motor torque oscillation. Fluctuating

“ Give him a maintenance schedule and he will quickly shovel the hard jobs to the backlog and wonder off to do the favoured jobs. ”

supply current to the motor produced air-gap torque oscillations. This produced torsional vibration coincident with the first torsional mode predominantly at the FC rotor.

Introduction

Fluctuating radial vibration amplitudes were reported predominantly at the feed compressor (FC) stages rotor during off-peak operation period after 22:00 to 09.00 hours the next day while a nearby steel processing plant is operated. Alarm and trip vibration set points are 40 and 50 microns peak-to-peak (pp), respectively. Fluctuating vibration amplitudes sometimes exceeded the alarm set point, and disappeared during peak period each day when

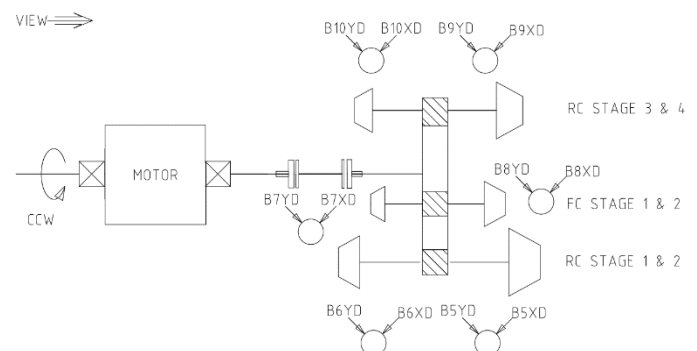


Figure 1 - Machine train and transducers layout showing existing shaft vibration probes installed at each bearing. Note that there is no vibration and keyphaser sensor installed at motor.

the steel plant operation is stopped. The steel plant is equipped with an electric arc furnace (EAF) to melt raw material. Oxygen gas is injected into the furnace to increase flame temperature. Work steps and instruments used will be discussed in this paper.

Field Measurements

Shaft vibration probes are installed radially at each bearing at ± 45 degrees from vertical, plus a keyphaser, for each rotor to measure vibration, phase angles and running speed. All vibration signals and keyphasers are connected to a vibration transmitter which provides 4-20 mA reading to the machine's distributed control system (DCS) with set points for alarm and danger for machinery protection. Machine train and transducer layout is shown in Figure 1.

Additional sensors and measurement systems are installed as follows.

- Strain gauge and its telemetry system for direct torsional vibration measurement at motor shaft (*see figure 2*).
- Laser keyphaser and reflective tape at motor rotor to measure motor speed and phase angle.
- Current transformer (CT) clamp-on to measure dynamic current supplied to the motor
- Motor current and voltage analysis using Electric Motor Testing analyzer (from PdMA®) to fully analyze power supply quality and identify possible electrical malfunction if any.

Multiple channels vibration analyser was used for data collection setup, processing, storing, plots presentation, and preparing the analysis report.

Data Discussion

Vibration data measurement was carried out covering both peak and off-peak operation periods in order to see different vibration characteristics correlating with dynamic torque and power supply current to the motor. Vibration trends showed that there was significant relationship between radial (lateral) vibration amplitudes measured at feed compressor (FC) stages and dynamic torque oscillation measured at motor rotor using strain gauge and telemetry system.

This is confirmed that fluctuating radial vibration amplitudes noticed predominantly at FC stages is due to torsional vibration excitation generated from motor rotor. It is connected to bull gear which is meshed with pinion shaft of FC stages rotor, hence, torsional vibration can couple to radial/lateral vibration through gear mesh [1]. There was no significant vibration amplitudes fluctuation observed at all recycle compressor (RC) stages at the same period.



Figure 2 - Strain gauge and transmitter installation at motor shaft.

There was also noticed that fluctuating torque and vibration is also coincident with fluctuating power supply current to the motor and it was predominant at off-peak operation period (*see figure 3*). It was suspected that fluctuating current could induce oscillating air-gap torque at the motor, therefore, fluctuating torsional vibration. There is clear evidence that fluctuating torque and vibration disappear when dynamic current is smooth (or less fluctuation).

However, there was argued that compressor operating load could affect change in motor current, therefore, inlet guide vane (IGV) was checked at the same operation period and found no significant change. Fluctuating dynamic current was not due to change in compressor load operation.

Fluctuating dynamic torque and radial vibration of FC stages was predominantly at 22.5 Hz during off-peak operation (*see figure 4*) with minimum amplitude at peak operation (*see figure 5*) periods with similar waveform pattern. This can be concluded that torque oscillation of motor rotor resulting in radial vibration noticed predominantly at FC stages at frequency 22.5 Hz during off-peak operation period when there is highly fluctuating motor supply current.

Spectrum data versus time of dynamic torque measured at motor rotor and radial vibration of FC rotor were compared in off-peak and peak operation periods in extensive time range are shown in Figure 6 and Figure 7 (*over page*). Transient data during

Continued over page >

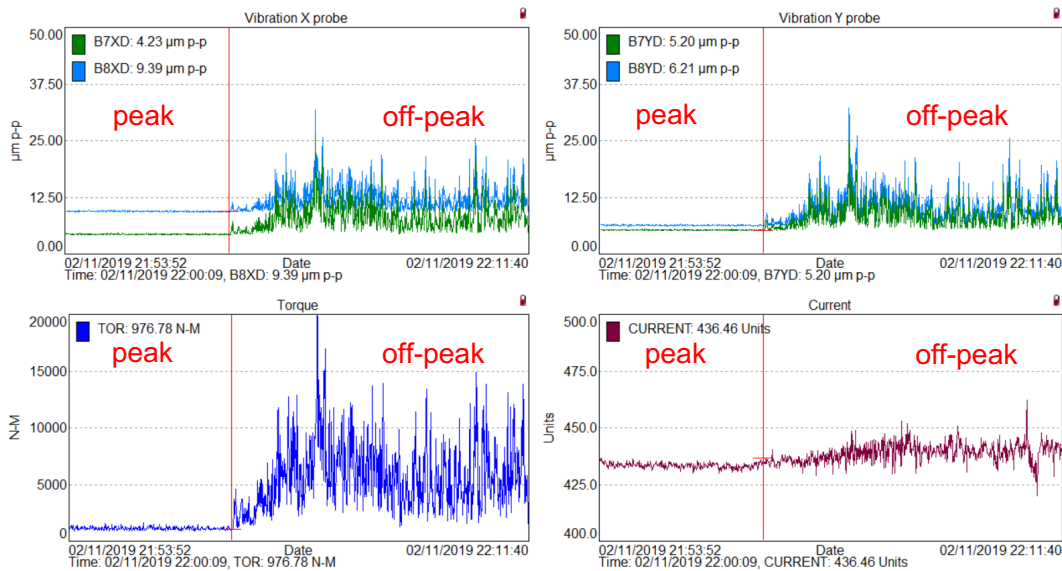


Figure 3 - Trend plots data correlation of vibration data measured at FC rotor, dynamic torque, and power supply current of motor during peak and off-peak operation period.

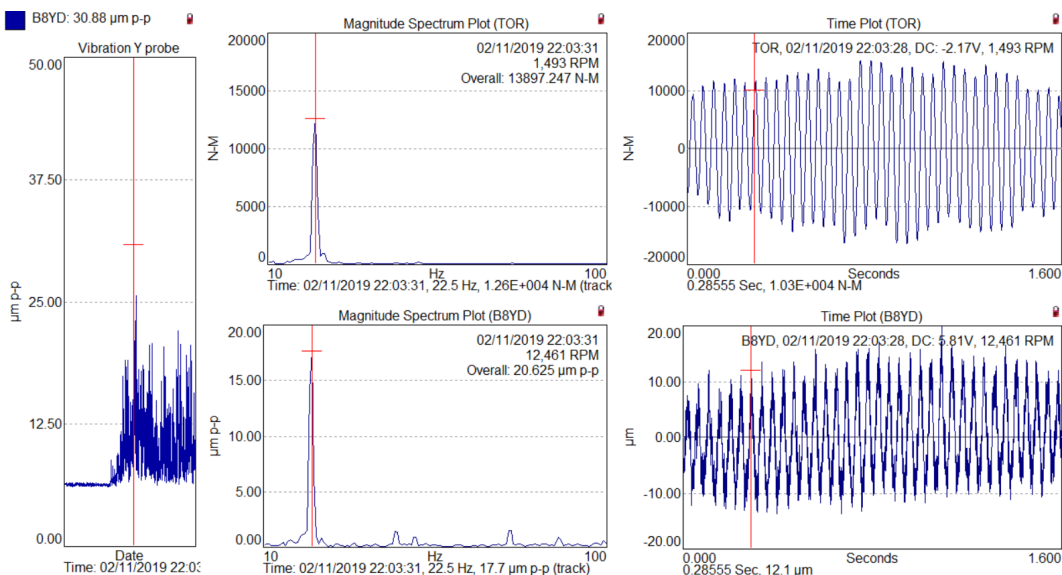


Figure 4 - Waveform and spectrum data of vibration data measured at FC rotor and dynamic torque during off-peak operation.

shutdown is reviewed and found that 21.88 Hz frequency component revealed constant frequency with machine speed independent when the unit ran down for both torque (torsional vibration) and radial vibration (see figure 8). This is a symptom of resonance as it is suspected torsional natural frequency (TNF) is excited by torque oscillation of motor rotor. This is very close to calculated TNF of drive train at 1278 cpm (or 21.2 Hz) with 14.29% separation margin from motor operating speed, refer to Table 1.

As discussed above, fluctuating motor power supply current can result in air-gap torsional oscillation and excite torsional vibration of the drive shafts and/or torsional natural frequency, hence, possible root

cause of current fluctuation should be identified. Relevant operating parameters is reviewed (Figure 9). and found that compressor load parameters are constant or no significant change/different between peak and off-peak period, for example, IGV feed and recycle, suction/recycle flow, etc. This is concluded that fluctuating current is not due to compressor load fluctuation.

However, it was found that oxygen vent valve operation (green color curve) has significant relationship with fluctuating radial vibration amplitude measured at FC stages (blue and orange color curves).

Continued over page >

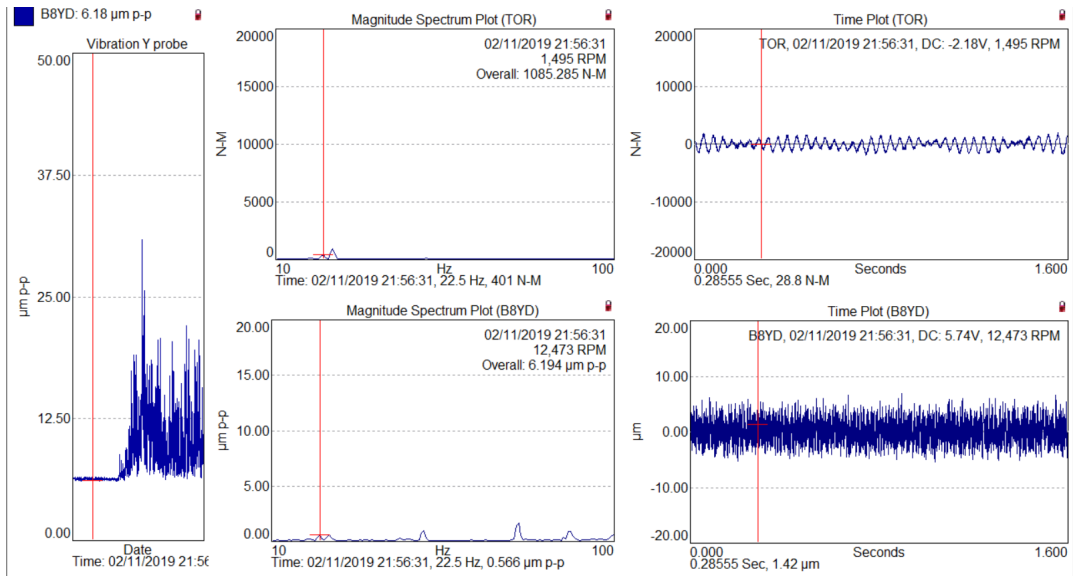


Figure 5: Waveform and spectrum data of vibration data measured at FC rotor and dynamic torque during peak operation.

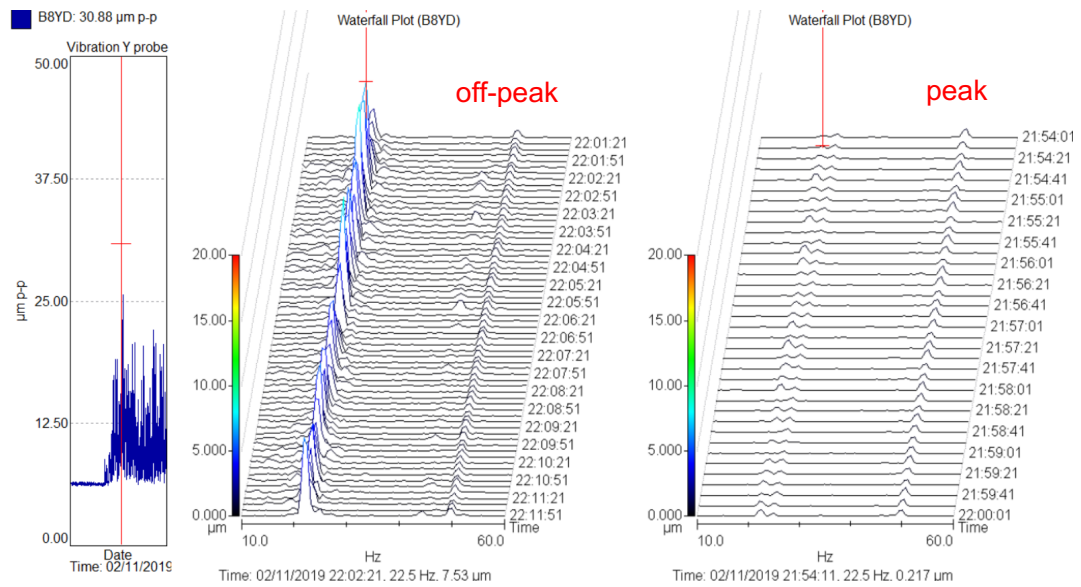


Figure 6 - Waterfall plots of vibration spectrum comparison between peak and off-peak operation period.

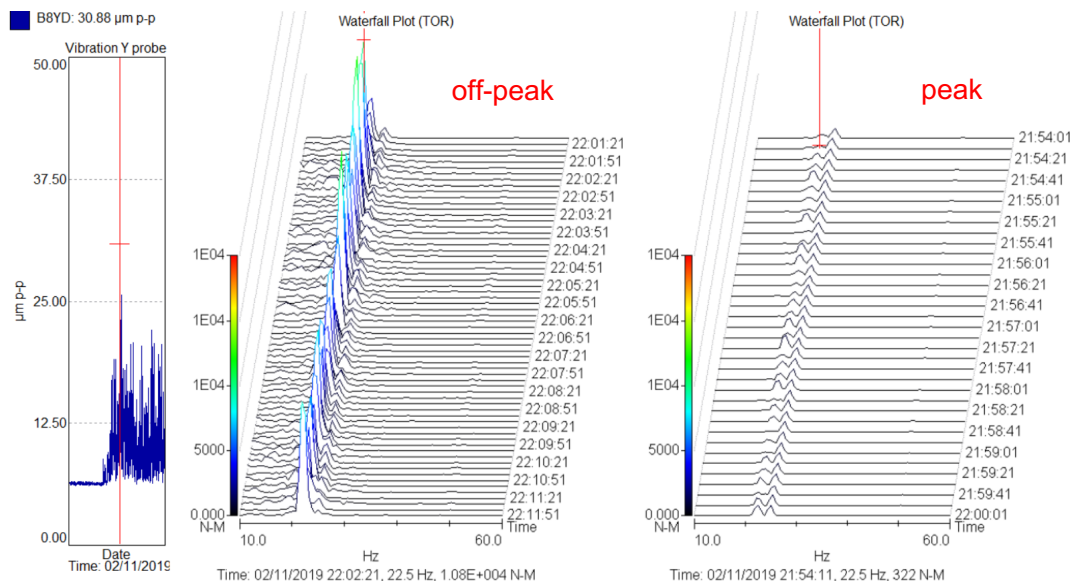


Figure 7 - Waterfall plots of dynamic torque spectrum comparison between peak and off-peak operation period.

1.

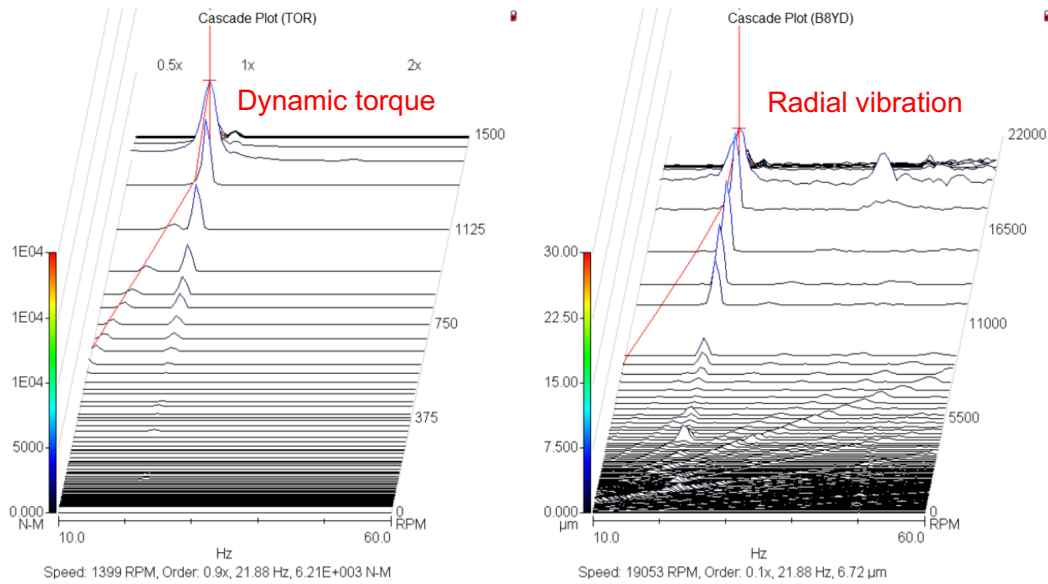


Figure 8 - Dynamic torque (left) and vibration of FC rotor (right) spectrum versus machine speed during transient.

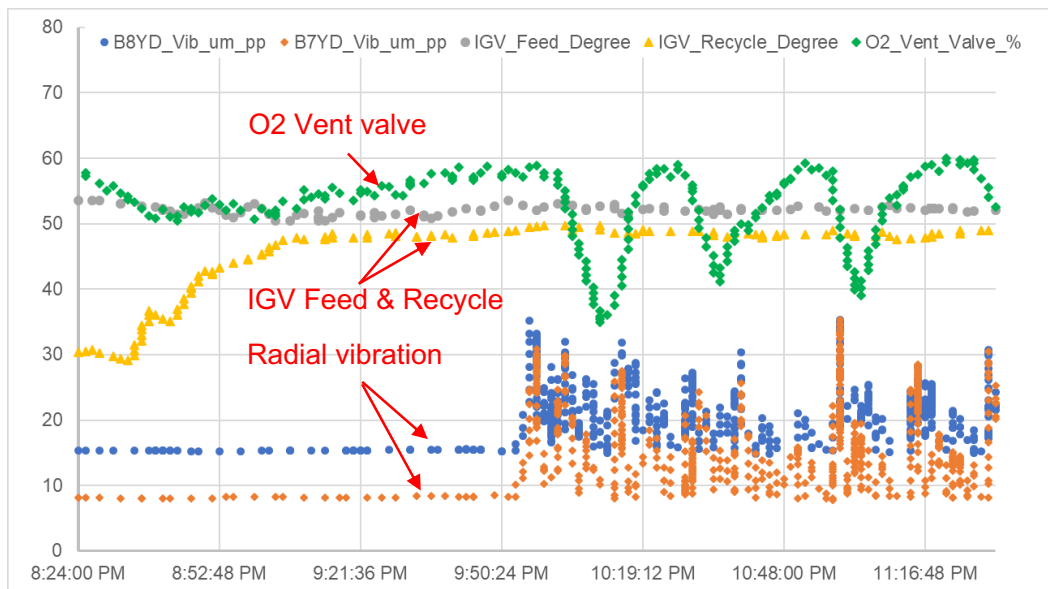


Figure 9 - Trend plots of multiple operating variables correlating with vibration data measured at FC rotor during peak and off-peak periods.

Table of Margins at Max Speed							
Other	Mode 1	Mode 2	Mode 3	Mode 4	Mode 5	Mode 6	Mode 7
	1278.867	6795.158	8282.77	13020.55	14319.32	17183.913	19113.547
1	-14.29%	355.44%	455.15%	772.69%	859.74%	1051.74%	1181.07%
2	-57.14%	127.72%	177.57%	336.35%	379.87%	475.87%	540.53%

Table 1 - Calculated torsional natural frequency of the drive train with separation margin from 1X and 2X of motor running speed.

This vent valve controls oxygen consumption to electric arc furnace (EAF) of nearby steel processing plant which is a customer of this gas plant. They are connected to the same electrical network. It can be evidence to support that EAF operation could generate fluctuating current to power supply grid

of the motor resulting in torque oscillation, hence, torsional vibration excitation.

Corrective Actions

With findings above, possible corrective action was discussed as followings.

- Fluctuating motor supply current generated from steel plant during off-peak operation should be minimized with smoother or dampener. However, steel plant is a customer of air separation plant and also current fluctuation is less than 10% deviation as specified in the power purchasing agreement (PPA) with power provider.
- There are two machine trains at this air separation plant with almost identical configuration but another train has no issue of torsional vibration excitation. The difference is power supply source to these two machine trains as the one with problem is in the same power grid with steel plant and another uses power supply from another source. However, customer could not change two trains to the same source due to reliability concern as a backup unit is required.
- It is recommended to consult with machine manufacturer if coupling shall be redesigned to shift TNF from torsional excitation and/or change coupling type with more damping element e.g. elastomeric type, etc. Changing drive train TNF is feasible but exciting frequency of air-gap torque is likely to be broadband [1], hence, excitation or resonance problem could not be avoided. For elastomeric type coupling, this can help to dampen amplitude of torsional vibration excitation [2], but it does not eliminate the root cause as well as maintenance and duration of this coupling type might be a concern. The rubber elements tend to degrade over period of time and change its geometry resulting in other issues.
- Check with motor manufacturer for detail study of air-gap torque variation in case of motor current fluctuation. The result can be correlated with field torsional vibration data measured. The approach is to identify possible excitation frequency of air-gap as well as magnitude caused by fluctuating power supply current to the motor and it required special calculation [3].

There was also input from coupling manufacturer that fluctuating torque noticed is not over coupling capability/rating, hence, this is not likely to cause any damage to the coupling. However, another concern was torsional-lateral coupled vibration revealed at FC rotor could trigger trip vibration set points, hence, unexpected trip and lost product plus penalty can occur. The final solution is to change relay logic of vibration monitoring and protection system to avoid nuisance tripping as the trip logic of FC rotor should be voted with other rotors.

Conclusions

Fluctuating radial vibration amplitudes observed at FC stages rotor during off-peak period is due to torsional-lateral coupled vibration through gear mesh. This occurred when EAF of a nearby steel plant is operated resulting in fluctuating power supply current to the motor, hence, fluctuating air-gap torque. Predominant vibration frequency is 22.5 Hz which is close to first TNF of the drive train. Field measurement data shows clear corresponding and supporting evidences of radial shaft vibration, dynamic torque, power supply current, and process variables. Detailed analysis helps to find the root cause and see the problem clearly, then practical solution can be chosen. ■

References

- [1] J. C. Wachel and F. R. Szenasi, "Field Verification of Lateral-Torsional Coupling Effects on Rotor Instabilities in Centrifugal Compressors," in NASA CP2133, Texas, 1980.
- [2] P. J. Smith, "Machine Doctor: Transient torsional vibration problem due to electrical noise," 9 September 2018. [Online]. Available: <https://m.energy-tech.com/>.
- [3] M. L. Leonhard, U. Kern and K. Reischl, "Electric Power Supply Exciting Torsional and Lateral Vibrations of an Integrally Geared Turbocompressor," in Proceedings of the 30th Turbomachinery Symposium, Texas, 2001.



JOIN US ON
FACEBOOK

Stay up to date with latest news or developments,
share posts and keep connected with
your VANZ community.

@VibrationsNZ

Vibrations Association of New Zealand

TEST YOUR KNOWLEDGE - PART 71 OF A SERIES

- 1 **The vee profiles in a vee-section pulley are found to be worn. A decision is made to replace the pulley, and fortunately there are stampings on the pulley identifying its diameter. The stamping of that information relates to...**
 - a The outside diameter of the pulley
 - b The pitch diameter of the pulley
 - c The diameter as would be measured at the bottom of the machined vees
 - d Both a and b are correct
- 2 **During a single-plane balance job, the balancing program recommends adding 50 grams at location 3 on the impeller (there are 8 balancing locations in this instance – all evenly spaced and on the same pcd). If you cannot add the 50 grams at location 3, which of the following actions would give the same effect?**
 - a Removing 50 grams at location 7
 - b Adding 35.36 grams at each of locations 2 and 4
 - c Removing 35.36 grams at each of locations 6 and 8
 - d Any of the above
- 3 **Steel springs and Air springs can both be used effectively to isolate low-frequency vibrations. What advantage might an air spring isolator have over a steel spring isolator?**
 - a Improved fire resistance
 - b Higher isolation efficiency
 - c The air-spring might be more effective at isolating high-frequency vibration (e.g. for noise reduction purposes)
 - d None of the above
- 4 **A 2-pole motor is coupled to a screw compressor. A velocity spectrum collected from the motor using 400 lines and 1000 Hz fmax shows a vibration peak at about 2 x running speed, or possibly 100Hz (i.e. electrical). It is important that you establish which of the two it is. How might you proceed with greater certainty?**
 - a Collect another spectrum with increased lines of resolution
 - b Collect another spectrum with a lower fmax
 - c Collect another spectrum with a higher fmax
 - d A or B, or (better still) A and B will provide greater clarity
- 5 **A centrifugal fan running at 1200 rpm is belt-driven by a 4-pole motor via 6 x SPB belts. The belts are tensioned correctly using a sonic belt tensioning meter. Which of the following frequencies would likely be closest to the correct belt tension?**
 - a 3 Hz
 - b 30 Hz
 - c 300 Hz
 - d 3000 Hz
- 6 **During an insitu balancing job, the phase was noticed to be unstable. What might cause this?**
 - a Looseness in the rotating assembly of the machine being balanced
 - b Intermittent/weak signal from the tachometer (due to sunlight, dirty reflective tape etc)
 - c The once/rev vibration signal has become reduced to a very low level due to the balancing being successful
 - d Any of the above could cause the phase to be unstable
- 7 **Band alarms are a feature of many vibration analysis systems. What advantages (if any) might they offer over a system that alarms on overall vibration levels only?**
 - a Band alarms could potentially provide much earlier detection of deterioration within the asset
 - b Band alarms might give more specific information as to the type of fault
 - c Both A and B are advantages of Band Alarms
 - d Neither A nor B are advantages of Band Alarms
- 8 **If you suspect that the base-frame of a pump-set is loose on its concrete plinth (resulting in high vibration), how might you go about proving it?**
 - a Take vertical readings on the baseframe and the concrete – a high variance in levels could be indicative of looseness
 - b Carry out cross-channel phase – one transducer on the structure, the other on the concrete – a variance in the phase could be indicative of looseness
 - c Often looseness might be confined to one location, so

Answers on page 30



take vibration readings in the vertical plane at each corner of the baseframe, and possibly mid-points, and compare the vibration levels

d All of the above could be valid approaches

9 Where might the letters TDC most-likely be noted?

- a Analysis of reciprocating machines
- b Analysis of electrical machines
- c Analysis of centrifugal pumps
- d Analysis of mixed-flow fans

10 To which of the following machine faults would a dynamic absorber be a potential corrective measure?

- a Machines vibrating due to looseness
- b Machines that are unbalanced but which have no issues with resonance
- c Machines that vibrate due to bearing degradation
- d Machines that vibrate due to resonance issues



there's a seat here with
your name on it...

Why not become a VANZ member?

Anyone with an interest in the area of mechanical and electrical machine condition monitoring, to facilitate predictive asset management is eligible to join.

Size doesn't matter!

VANZ membership ranges from a business with a line of small water pumps to personnel from some of the largest plants running million dollar machines.

Find out more...

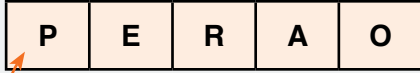
Contact us today: secretary@vanz.org.nz



WORD BUILDER

How many words of three or more letters can you make, using each letter only once? Plurals are allowed, but no foreign words or words beginning with a capital. There is at least one 5 letter word.

15 - Good | 20 - Very Good | 25+ - Excellent

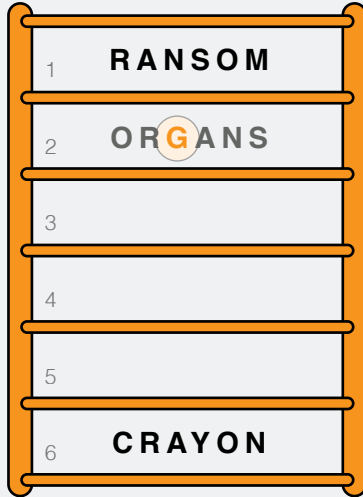


There is 2 possible 5 letter words above. Can you find them?

WORD LADDER

A Word Ladder has two words in the ladder, one at the top and one at the bottom. You must form a sequence of words going down. On every step of the ladder (1-6), you must unscramble and create a new word that only differs by one letter from the word above it until you reach the destination word on line 6.

We've started it off for you...



SUDOKU

To solve, each number from 1 to 9 must appear once in:

- Each of the nine vertical columns
- Each of the nine horizontal rows
- Each of the nine 3 x 3 boxes

No number can be repeated twice in a box, row or column. Why not time yourself? **We've started it off for you...**

7	4							2
6	5		1	3	2			9
					4			
		5					7	
9		2	8	7	1			
		7						1
	2		9	1	5			
	8			2				1
1					3			5

Missed an issue of Spectrum?

No worries. Head on-line to www.vanz.org.nz to find back issues of the magazine to catch up on.

Or, simply scan the QR code here to link your device directly to the VANZ website. There you will find back issues of Spectrum available to view*.

* A QR code reading app will need to be installed on your device first.



Rethinking the House of Reliability...

What are the events in history that have caused us to perform the way we do? Why is it so hard to change? How can we use diagnostic failure patterns to predict when we need to act? In every bit of the present, advances in technology and machinery have us begin to identify the right order for all of the required pieces within our maintenance organizations?

The VanZ Quarterly Report...

Over the last three decades the vibration and condition monitoring industry has witnessed many changes. While these changes have been technologically positive, some have required a major paradigm shift in the way we think about reliability. This report explores the challenges of maintaining a high level of reliability in a world of constant change. It also provides a framework for thinking about reliability in a way that is both practical and forward-looking.

Over the last three decades the vibration and condition monitoring industry has witnessed many changes. Some have resulted in greater analytical performance today than in earlier times.

The Emerging Role of the Operator / Maintainer

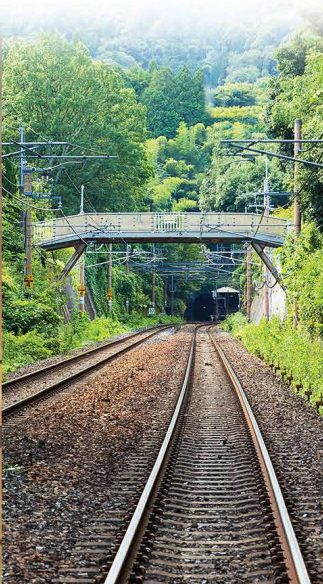
During the early days of modern manufacturing, the role of the operator was primarily to monitor and maintain the equipment. As technology advanced, the operator's role evolved to include more complex tasks, such as troubleshooting and predictive maintenance. This report discusses the challenges of training and supporting operators in this new role, and provides a framework for thinking about the operator's role in a way that is both practical and forward-looking.

KEEP IT

FLYING



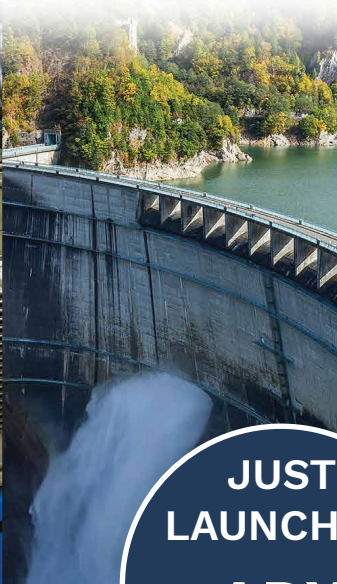
MOVING



WORKING



FLOWING



TURNING



**JUST
LAUNCHED
ADX
Static Motor
Tester**

Introducing the BAKER ADX!

The Megger Baker ADX is an innovative and transformational leap forward for motor testing in today's demanding workplaces. Bringing together the functionalities of the Baker DX and AWA systems into one modern package the ADX is perfect for the rewind workshop or as part of a predictive maintenance and condition monitoring regime in the field.

Contact AVO New Zealand today to arrange a demo

- Daylight viewable 10.4 in. touchscreen
- Rear mounted detachable test leads
- Incorporates a complete set of high- and low-voltage motor tests
- Internal battery backup - no need to restart when moving between assets
- Secure cloud-based data management system storage

The Baker ADX - Keep it close by

Megger[®]
Baker Instruments



AVO[®]

0800 485 990

avo.co.nz

Spectrum

The official journal of the Vibrations Association of New Zealand (VANZ)



SAVE UP TO \$200 ON ADVERTISING BOOK TODAY!

Our quarterly magazine includes:

- Papers from conference reprinted
- Conference information
- Articles and reports from industry leaders
- Presidents report
- Notices
- Committee reports
- Interactive activities *and much more..*



Advertising Rates

DPS	Full Page	Half Page	Quarter Page	Advertorial
Size (width x height): 420x297mm (Trim) 426x303mm (Bleed)	Size (width x height): 210x297mm (Trim) 216x303mm (Bleed)	Size (width x height): 190x134mm (Horz) 93x272mm (Vert)	Size (width x height): 190x80mm (Horz) 93x134mm (Vert)	\$100 per page or 50% discount if bought in conjunction with a full page colour advert.
Single issue rate: \$550+GST	Single issue rate: \$350+GST	Single issue rate: \$300+GST	Single issue rate: \$250+GST	
4-issue (1 year) rate: \$500+GST	4-issue (1 year) rate: \$315+GST	4-issue (1 year) rate: \$270+GST	4-issue (1 year) rate: \$225+GST	

The small print...

How to supply an advert:

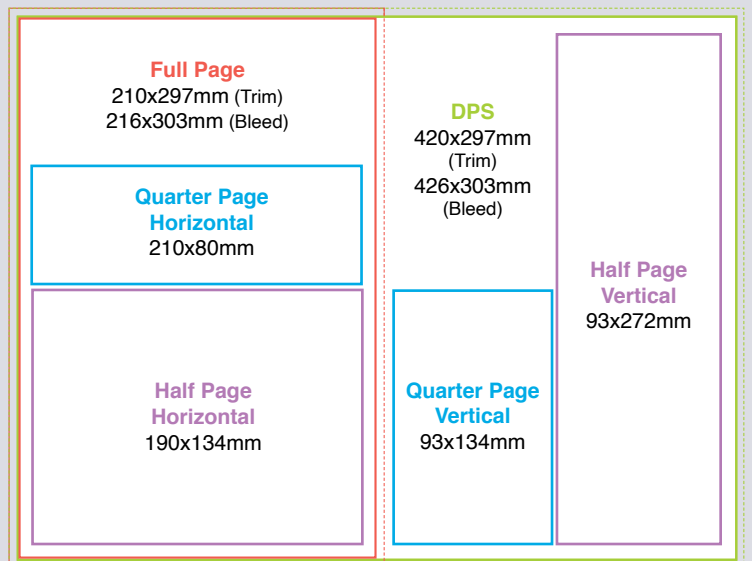
All advertising copy to be supplied in high-res PDF format at the correct size required. Files to be supplied press ready at 300dpi with 3mm bleed for full page and DPS advertisements. The special 4-issue rates are for advertising in 4 consecutive issues. i.e. Issue 91, 92, 93 and 94. **Save up to \$200 on your advertising in Spectrum!** Email Angie at spectrumeditor@vanz.org.nz to confirm your advert(s) and method of payment as soon as possible.

Publishing:

Each SPECTRUM will be distributed as an epub document and available for download and printing by VANZ members. Previous issues will become available on the public domain.

Article submissions:

Articles for upcoming issues of Spectrum are welcomed by the editor. Copy to be supplied preferably in Microsoft Word, but PDF file format is also acceptable. Please email spectrumeditor@vanz.org.nz with your submission or should you require further information.



Word Ladder: 1. random, 2. organs, 3. jargon, 4. trojan, 5. contra, 6. crayon
Word Builder: opera, pareo
Carlton Technology Quiz 71: 1B, 2D, 3C, 4D, 5B, 6D, 7C, 8D, 9A, 10D

Knowledge is power. Knowledge shared is power multiplied!

– Robert Boyce

**VANZ is looking for papers for the
34th annual conference in Tauranga,
May 9th, 10th and 11th 2023.**

Are you able to assist?

If you think you can own your craft. We want to hear from you. It might simply be 15 minutes of discussion (or longer if you like). It's up to you.

Contact us today... papers@vanz.org.nz





CONDITION MONITORING WITHOUT SENSORS

The AMT Pro provides:

- Model based fault diagnosis technology
- Detects mechanical faults, electrical faults and process faults
- Portable or online

Visit our stand for a demonstration of the AMT Pro.

NVMS 

+64 274 664 810

nvms.co.nz