



Te Korowai Trust

SOCIAL SERVICES FOR WHĀNAU
"Hei Whakatipuranga Whānau"
Strengthening future generations

July 2019

ISSUE 8



To appreciate the beauty of a snowflake, it is necessary to stand
in the cold

Rata Foundation Visit to Te Korowai Trust to take a look at our renovations which Rata kindly funded us for.



Photo: George Patena, Myra Dick and Steve Merito.



The Soroptimist International Nelson ladies came to visit us for afternoon tea and 'meet and greet' with the staff on the 20 June 2019. They have worked hard for us in organizing a movie event with proceeds going towards our SuperGran's programme. A huge thank you!!!!

RECENT LAW CHANGES THAT CAME INTO EFFECT IN JULY.

KiwiSaver Changes

More than 500,000 New Zealanders will be able to join KiwiSaver due to law changes from July 1. About 2.9 million people already belong to the retirement savings scheme, but until now, over-65-year-olds had been locked out of joining.

There are 747,900 people aged 65 and over in New Zealand, according to Statistics New Zealand and research by the Commission for Financial Capability shows nearly one in three (29 per cent) of over-65-year-olds are already in KiwiSaver. That leaves 531,009 who will be able to join.

The other change from July 1 is that new members will no longer be locked in to the scheme for five years. Members between the ages of 60 to 64 (inclusive) who enrol on or after July 1, 2019 will be able to withdraw their KiwiSaver funds at 65 but they will also miss out on getting the government contribution for a minimum of five years.

Family Violence Act

From today, the Family Violence Act 2018 replaces the Domestic Violence Act 1995 with a stronger focus on the safety of victims, and how the system responds. The term domestic violence is replaced with family violence - to reflect that violence happens in a range of intimate and family relationships. The definition is also expanded to include coercive or controlling behaviour. And new factors can be taken into account by decision-makers like police - including abuse of pets, dowry abuse and withholding care. The process for applying for a protection order will be simpler, and there are measures to improve collaboration between agencies.

Oranga Tamariki Model

Oranga Tamariki is set to see the biggest shake-up since its inception in 2017, as The Children, Young Persons, and Their Families Legislation Act comes into full force today. Under the law, the Ministry must provide a practical commitment to the Treaty of Waitangi and offer support to young adults leaving state care until their 25th birthday. Significant changes to the Youth Justice System also take effect, which include the introduction of 17-year-olds into youth court. The legislation changes state care from its old ambulance at the bottom of the cliff model, to a far more proactive and supportive model.

New Rental Requirements

From July 1, tenants can seek up to \$4000 in compensation from their landlords if their homes are not properly insulated. Landlords are required to install ceiling and underfloor insulation wherever possible, however wall insulation is not compulsory.

According to information on the Ministry of Business, Innovation and Employment (MBIE) website, any landlords who still don't comply after paying the penalty, may face "further action". Landlords who have installed new insulation since 2016 should already meet the 2008 Building Code and, as such, won't need to do install more insulation.

The new rules are the first step in wider changes under the Healthy Homes Standards that will come into effect in 2021.



Introducing New Staff:

Michelle Trow (Te Haunui Apaparangi)



Michelle is our Drivers Licence and Kaiakopono Whānau Co-ordinator, Her passion is supporting others to make life changes that create positive outcomes. Michelle has skills in business, education, employment and health particularly in administration and manaakitanga (support/pastoral care).

Matt Lattin (Te Ahiawa)



Matt is our Champions and Street Co-ordinator, He is a young man who has an enormous passion for the community and is a very skilled and effective communicator with a diversity of people and in diverse contexts. He has a lasting commitment to inclusion of biculturalism and tikanga Māori.

Sarah Lim



Sarah is our new Social Worker. She is of Cambodian descent from Canada. Her aspirations are to work with, and empower whānau through mahi that utilises a culturally rooted and holistic approach to health and wellbeing. She shows great respect for her work environment and those she encounters.

Hannah Johnson (Ngāpuhi)

Hannah is our Initiative Co-ordinator. Her passions include working with communities to develop strategies that removes barriers. She is very artistic and creative and is interested in having a positive impact for young people, diverse communities and the general wellbeing of society.

Hannah is also a member of the Whakatū Māori Womens Welfare League.



Haidee Channings



Haidee is our latest financial mentor and will be replacing Peter when he retires. She is a confident and motivated young lady who is excited to begin working with whanau.

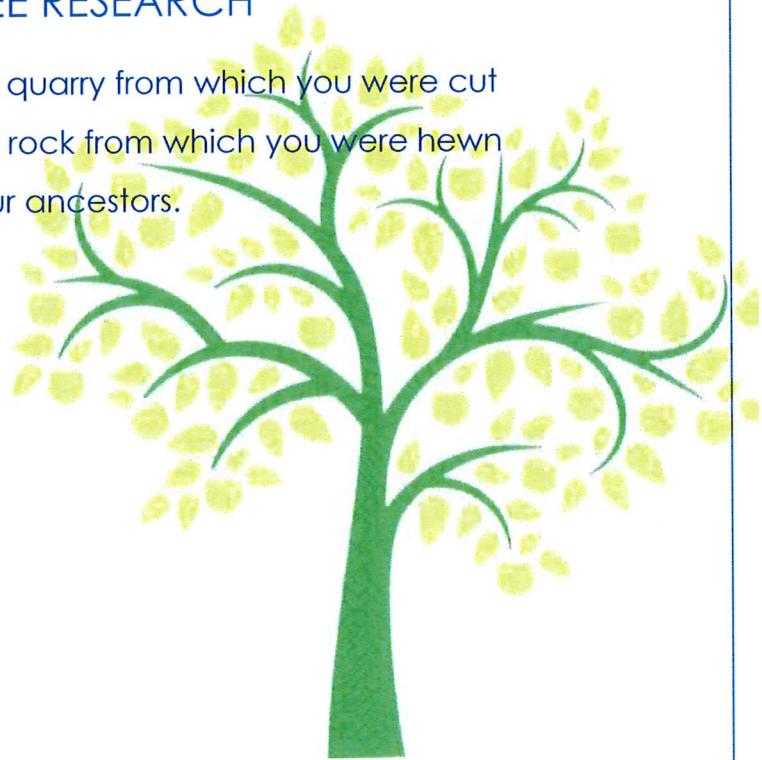
Rona Sedman

Rona is our 3rd year NMIT student doing her placement here at Te Korowai Trust.



W HAKAPAPA/FAMILY TREE RESEARCH

Remember the quarry from which you were cut
Remember the rock from which you were hewn
Remember your ancestors.



Ko wai Au? – Who am I?

Nō whea tōu kainga tuturu? – Where is your sense of belonging?

Two important questions for every human being to discover, know and understand. Knowing our cultural background and where we came from can help us develop a strong sense of who we really are. The way we relate to our family stories and create our own stories about ourselves helps establish our unique, authentic identity. Knowing your heritage brings a sense of belonging, of pride and connection.

We will help you find your story – where you herald from, what made you who you are,

Cost:

\$200 for 4 hours research.

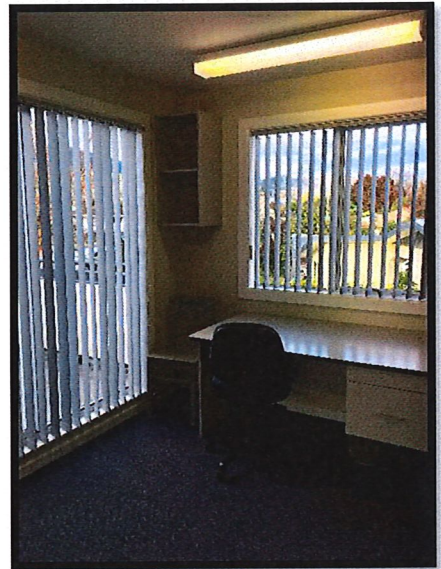
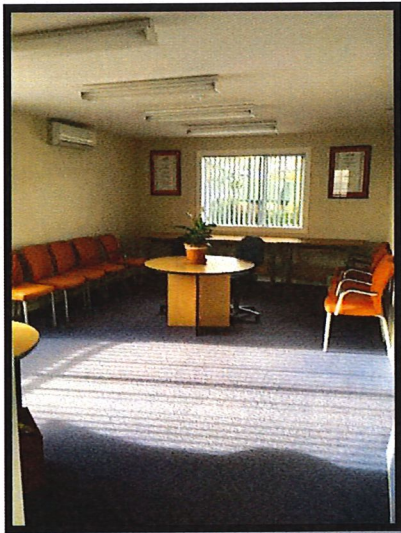
More hours can be negotiated if needed. If you are interested or would like to talk to us please contact the office.

ROOMS FOR HIRE

Te Korowai Trust has a meeting room available for hire at \$20 per hour. There is also a small kitchenette that can be used off of this room.

There is also a small consulting room that would be suitable for a professional to see their client in the Stoke area. This room is available at a cost of \$10 per hour.

If you are interested in hiring any of these rooms please contact the office.



HOW TO CONTACT US

Office hours: Monday to Friday 8am to 4.30pm
398 Main Road Stoke

Contact Details: Phone: 03 5475958

Fax: 035475966

Email: robyn@tekorowaitrust.co.nz

