



coastal Tasman - experience our unique location

# Tasman Times

June 2019

Welcome to our winter/spring newsletter, crammed full of local issues and happenings.

Thanks to TDC for their help in the production of our community newsletter.

Editor ([chair@tasmancommunity.org.nz](mailto:chair@tasmancommunity.org.nz), 021 222 5066)

## From The Chair

Since our last newsletter, TACA has been involved in a number of challenging community issues. Through December & January we acted as an information conduit over a controversial resource consent in Tasman Village which polarised various viewpoints. This caused us to take a long hard look at ourselves and has resulted in us completely revising our constitution, which had not been updated for over 10 years.



Our local reserves continue to keep us busy with a new proposed carpark in the Tasman Reserve about which your feedback is invited (p.2). The Tasman Underpass has been hit again by graffiti but quick community action saw it removed promptly before the paint had properly set. Baigent Reserve at Kina has raised ongoing issues with hoons ripping up the grass for which we have yet to find a solution (p.7).

A great community volunteer effort in May resulted in two very successful beach clean-ups on our Tasman Bay



Beach, around the Mouere Inlet and along the Coastal Highway to Motueka. Over a ton of rubbish was collected with the help of other local businesses and thankfully this will not now end up in our waterways.

Finally and most importantly in your letterbox along with this newsletter, you will find a flyer offering you a free listing in the local phone directory and inviting you to join our local email database so you can be kept informed of local issues and events.

In the meantime here's wishing you a happy and safe winter & springtime.

David Short  
Chairperson

## Admin Stuff from the Secretary

### TACA Constitution

A few months ago the TACA Committee had reason to check on several aspects of the Constitution that governs TACA objectives and administration. We found that it had not been reviewed for over 10 years; certain aspects were out-dated or too vague; the wording required clarification to handle certain problematic issues that could arise; and it needed to reflect TACA's role into the future.



After researching a standard template, a similar community association document, and much consultation among committee members, we now feel we have generated a document that both fulfils the legal obligations of the Association and is suitable to define TACA's ongoing objectives and roles for the next few years.

It is planned that the final draft of the revised Constitution will have been accepted by two thirds of Society Members present at the June monthly General Meeting, as per the rules of the current Constitution. The new Constitution will then be effective from the AGM on 25<sup>th</sup> July 2019.

If you want to see a copy, once adopted, please contact the secretary at [secretary@tasmancommunity.org.nz](mailto:secretary@tasmancommunity.org.nz).

## 2019 Annual General Meeting

This will be held on **Thursday 25th July 2019** in the **Tasman School Hall** at **7.30pm**.

Anna Gerraty from the Tasman District Council will address the meeting prior to the business session. Anna has the role of preparing a Reserves Review for the Waimea-Mouere Ward.

## Anzac Day Service

A very pleasant morning on 25 April brought many local residents to the service at the Tasman Memorial where keynote speaker Garry Dunn, who is the support officer from the New Zealand Cadet Forces, reminded us to remember those who served their country.

TACA was again instrumental in preparing and serving the morning tea.



## Local Reserves

### Tasman Reserve & Sculpture

The Reserve is looking really good at the moment with the grass all green again after the summer drought.

All the trees in the Open Orchard are doing well and you all should have enjoyed apples, plums and feijoas this summer and autumn. The citrus is flowering again, setting their crop for next year. The pump track is showing signs of wear and needs the stones raked off from it. It needs someone in the community who uses the track to spend half an hour doing this. You will be rewarded with a much better riding experience and the great feeling of owning your track.

### Reserve Carpark

A proposal has been made by TACA to create a carpark in Tasman Reserve and we'd really like some feedback on whether you think it is necessary, maybe a good idea, unnecessary or a totally bad idea.

The idea to create the carpark is to try to address several issues:

- People driving on the cycleway across to the pump track area
- Parking congestion and turning difficulty on Rush Lane
- Parking and unloading children on the roadside
- Formalising parking for ride sharing

The basic design is for 10 carparks in a gravelled carpark area. Access would still be possible to the rest of the reserve through the carpark for the tractor mower, horse floats, parking for Muddy Buddy etc.

The surrounding area would be planted with a continuation of the Open Orchard to soften the edges and also provide some summer shade.

At this stage it is still only a proposal and now is your chance to have your say, not just for or against but please give us your ideas of what you would like to see in the reserve. Steve Richards is the TACA committee member to contact with your feedback.

[jesterhousesteve@gmail.com](mailto:jesterhousesteve@gmail.com)



A few members from the committee have been active at the sculpture keeping the area presentable. Weeds have been trimmed, fresh bark added to the existing bark base and the chip path leading down from the carpark has been renovated.



During early May and for the second time the underpass linking the domain to Harley Road was vandalised with graffiti.



Fortunately this time the incident was reported the morning after the event, enabling the four volunteers to be on site within about 36 hours to wash and wipe down the affected walls.

Should you become aware of graffiti being applied to the tunnel, please inform us immediately by contacting us through Joint Works, The Tasman Store or by email to

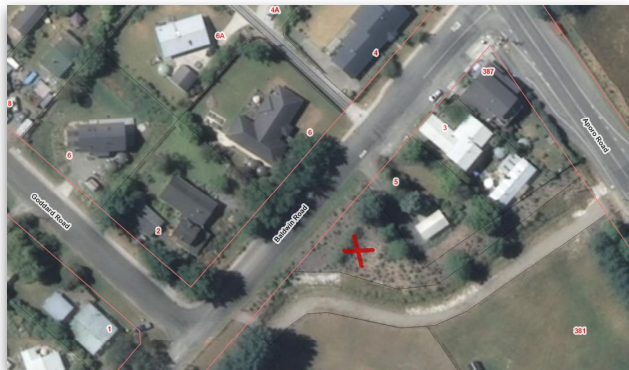
[secretary@tasmancommunity.org.nz](mailto:secretary@tasmancommunity.org.nz).

### Proposed new public toilet for Tasman Village

As our village has expanded, and the use of the cycleway has grown, the need for a local Tasman Village toilet has increased. As part of our investigation into the project, we have realised that the Tasman Reserve toilet is not signposted, so this will be done in the near future.

The proposal is to build a new toilet in Baldwin Road, in the TDC reserve, on the same side as the current store. This area is currently a small planted area backing on to the stormwater ditch.

TACA would be interested in your feedback regarding this proposal. Please send your thoughts to [admin@tasmancommunity.org.nz](mailto:admin@tasmancommunity.org.nz).



## Mill Point site Recovery Project Kina Beach Road

We have experienced Disaster and Disappointment since I last reported on progress on the site back in December last year. The DISASTER? – well, we all experienced that – the Drought! We lost 72 plants during those two months – most of last year's new plantings. We were not alone in this experience as many of the region's reserves and restoration sites had a similar problem, although I understand that the Dominion Flats recovery project at Mapua did not suffer too badly thanks to the streams that run through the site keeping the soil moist.

The DISAPPOINTMENT? The Easter Egg hunt for kids on our Open Day on May 4<sup>th</sup>. Whilst we had a number of adults visit the site to see what progress had been made, not one single family with kids turned up, so by midday I was left with the problem of what to do with a box of Easter Eggs. No doubt my 4 grandchildren will have some suggestions!!

But unbowed by either of these events the team have moved on and in two successful working bee Saturdays, we have managed to replace all the lost plantings AND planted 50 REAL TREES:- Titoki, Miro, Kahikatea and Totara. Granted they look pretty puny as root trainers but fast forward 50 years and.....



Titoki



Miro



Kahikatea



Totara

It could get pretty crowded on the site!

TACA's Chair has come up with an interesting plan that would link the site across the Tasman Stream through the Blackwood grove to Aporo Road. The issue of course is bridging the stream in a way that can withstand the occasional stream floods and high tides. An idea used in the Taylor River in Blenheim might work.



Our next working bee is scheduled for July 6<sup>th</sup> starting at 9.30am for a couple of hours and thereafter on the first Saturday of each month. You are very welcome to join us and enjoy a muffin, coffee and chat half way through the stint.

Tony Pearson (Working Bee Leader)

## Kina Beach Reserve

Kina Beach campsite was well occupied as usual over the summer months and late arrivals had to be re-directed to McKee Reserve or to the Motueka sites. Activity has of course reduced since Easter but there remains a steady stream of overseas tourists as well as Kiwi travellers who really appreciate this peaceful location on the shore of Tasman Bay.

Tinder dry summer and autumn conditions meant that driftwood collected after the 2018 storms could not be safely burned, so TDC arranged for them to be removed by the Community Services team and TDC contractors. The whole area has now been returned to its previous tidy appearance.

New and larger toilets have been installed both within the camp and now on the reserve area. These have much improved the facilities for day visitors to the reserve as well as people staying at the camp site.

## TACA is on facebook

After starting our facebook page a couple of years ago, TACA is slowly building its social media presence.

This year we have posted a lot more information on the progress that TACA is making on local issues that affect you, as well as local events and happenings in our community.

Help us spread the word by liking our facebook page and sharing our posts.

You can find us at [www.facebook.com/Tasmanareacommunityassociation](https://www.facebook.com/Tasmanareacommunityassociation).

## Jester House News



The July School holidays are nearly upon us and there's the perennial question. What to do with the kids? A holiday highlight for a lot of kids and their parents (and grandparents) is a visit to Jester House for a tasty lunch, a hot chocolate and to take part in the FREE school holiday activity. This winter we're having a Jungle Safari treasure hunt. We've hidden jungle animals around the garden and the kids get to run around the garden looking for them all. You get time to relax, knowing they are safe and having fun, and yeah, everyone is happy. The cafe is OPEN every day from 9am until 4.30pm. It's a good idea to make a booking to make sure you get the best table. Book at [www.jesterhouse.co.nz](http://www.jesterhouse.co.nz) or phone 03 526 6742.

In winter time the days can be cold and wet, but at the café it's always warm and welcoming. Steve takes pride in lighting a great fire



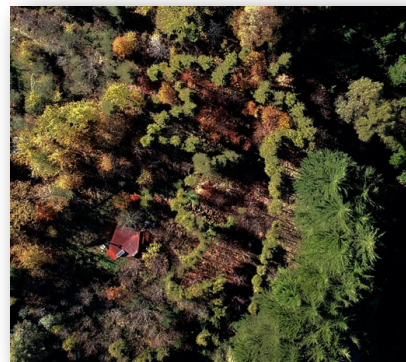
every morning and has taken to using the "Upside down Fire" method. It involves stacking big wood in the fire first, then moving up to smaller wood with kindling on top. It has been proven to burn longer and hotter than the traditional bottom up fire. Come along any morning and see for yourself how you can get more burn from your wood. Might as well have a coffee and date scone or muffin while you're here admiring the fire.

As some of you will know, having followed our progress on the map in the café, that Judy and I walked the South Island section of the Te Araroa Trail earlier this year. The trail goes from Ship Cove in the Marlborough Sounds to Bluff, a total of 1200 kms. It was a fantastic adventure and a great way to get to see our land. If you can find 9 weeks in your life, we thoroughly



recommend it and are happy to talk about the walk and give advice to anyone contemplating doing it.

On the 28th of June, to mark World Environment Day, we held a special tree walk on the hill behind the café. If you have been in the district more than 27 years you may remember



seeing the big Jesters face mown then planted into the long grass on the hill. Now it is a forest and the Jester is clearly visible. The walk was to encourage the planting of trees and to show that it's possible to have fun, even with a forest. All participants were given a bag of acorns to go away and plant their own forests. A billion trees in 10 years is a great ambition but they won't plant themselves. "The best time to plant trees was yesterday, the next best time is now."

The café will be closed for our winter break from after the school holidays, 22 July until 29 August, just in time for Fathers Day.

Wishing you a warm and healthy winter.

Judy, Steve and the Team at Jester House.

Tel: 03 526 6742

Email: [lunch@jesterhouse.co.nz](mailto:lunch@jesterhouse.co.nz)

Web: [www.jesterhouse.co.nz](http://www.jesterhouse.co.nz)

## Tasman School Community Pool

In early February this year we celebrated the official opening of the Tasman School Community Pool. This is a prime



example of how a community can work together to achieve success with an ambitious project. We now have a 25 metre by 6 metre swimming pool, with a deep end of 1.8 metres and permanent structure for the changing room, equipment room, and pump and filtration devices. There is now an amazing resource

available for wider community use and for the benefit of students in two schools that are part of our village.

Thank you to those who have made financial contributions to the project. We are working on more permanent signage to acknowledge your contribution. A big thank you to Nick Bowmast, Jodie Fa'avae, Hamish Lindsay, Kylie Rush and Anna Weeks for leading key elements of the project.

A resource like this is going to need continued community support to be open during the weekends and the summer holiday period. Multiple tests are required on a daily basis to ensure water quality and it is unfeasible to employ someone at this point to undertake this role at such an early stage in the life of the swimming pool. The sale of swimming pool keys will not cover this cost.

## Welcome Packs

Welcome packs containing vouchers, telephone books and local information are now being made available to newcomers to the Tasman/ Kina area by the rural postal delivery agents for RD1 and RD2. If you are new to the area and haven't received a pack, speak to the rural post driver or call the Secretary, Brian Hanlon on 021 265 3153.



### **NBS TASMAN GOLF CLUB (Inc)**

**128 Cliff Road, Kina Beach**

**Ph 03 526 6819**

**Email: [teeup@tasmangolfclub.com](mailto:teeup@tasmangolfclub.com)**

**[www.tasmangolfclub.co.nz](http://www.tasmangolfclub.co.nz)**

Our Concession books are 10 rounds of unlimited daily holes for \$200.

Membership options range from just \$80.  
Children under 12 Free.

If you are unsure about playing golf, come along on a Friday morning and enjoy a social round with a fun group of both beginners and experienced golfers. Tee off 9.30am.

For more information  
contact Claire at the Golf Club.

## The Tasman General Store News

Thanks again to this amazing community for the support and patronage over the past six months. It still humbles me how much we look out for each other and are there for each other when needed.



As many folk know the Store is up for sale. It is listed with John Bampfylde and Kylie Jones of Sotheby's, whom I can highly recommend as being very professional and conscientious agents. The listing is on TradeMe and also on the Sotheby's website, listing number NEL00386. If you follow our Facebook page the links are on there also.



The listing is on TradeMe and also on the Sotheby's website, listing number NEL00386. If you follow our Facebook page the links are on there also.

An update to our hours also, as some people have mentioned they did not realise we were open earlier on the weekdays. This will remain constant through winter.

Weekday hours: 7.30am – 5.30pm

Weekend hours: 8am – 5.30pm

Over winter we are doing a cup of soup and ciabatta roll for \$6.50 on Wednesdays and Fridays. The homemade bacon and egg pie and sausage rolls continue to fly out the door and it's most definitely cheese scone weather.

Enjoy the winter and stay healthy and warm and the odd treat is definitely okay 😊

Becs, Sonny and all staff at the Tasman General Store  
[www.facebook.com/tasmangeneralstore](https://www.facebook.com/tasmangeneralstore)



Our school has continued to grow. We currently have a roll of 120 students as new families have continued to move into the area.

At the end of March our annual fundraiser Muddy Buddy took place. The event drew larger numbers than the past few years and over \$19,000 was raised.

At present, plans are in motion to create a multipurpose learning space within the main classroom block. The purpose of this space will be to incorporate 'hands on' learning through art, science and technology. This project will also



include alterations to our junior classroom and the addition of a deck to improve flow from the classroom to the outdoor play-based learning space.

The school has continued to maintain its involvement in a range of in-school and district wide events that help to ensure our students have a range of rich experiences:

- During Term 1 all of our students were part of a 'Top Town' event held on the school grounds.
- Our Year 7 and 8 students participated in Experiencing Marine Reserves (EMR) in the format of a snorkelling trip in Abel Tasman National Park.
- Our current Year 8 students recently travelled to Hanmer Springs and Christchurch for their leadership expedition, which included a session at the Young Leader's Day. These students will also participate in a Whenua-Iti leadership course before the end of term.
- Students have recently been involved in school, local and regional cross country events. Congratulations to the Year 4 - 8 students who participated at the Motueka Schools' District Cross Country.
- Our senior outdoor education camp will be at Lake Rotoiti this year and our Year 4 and 5 students will stay overnight in Nelson and spend the day on a sailing ship completing marine sampling activities.



## Vet's Voice

### Keeping your dog active over winter

When it gets cold and dark it can be hard to motivate yourself to take your dog out for a walk! But it's really important to keep your pet active over the winter months, so that they don't get bored or destructive and so that they stay in shape – reducing your pet's activity over winter can put them at risk of obesity and increases their risk of orthopaedic issues in the spring time.



Here are some ideas to help keep your pet entertained and on the go this winter:

- ❖ Split your walk in two. It's hard to commit to getting up an hour early to walk your dog before work and it's hard to get the motivation to walk for an hour after dark, but if you break your dog's walk into two smaller 20 – 30 minute walks, one in the morning and one in the evening, it can feel a lot more manageable.
- ❖ Get the gear. Invest in a rain-proof jacket with reflective strips for your dog (and yourself!), and an LED collar so that your dog can be seen at night. A head lamp for yourself is a really helpful hands-free way to light your path on night time walks too. (Your dog doesn't need a lamp though – they can see in the dark!)
- ❖ Try something new. If getting out for a walk in the dark and cold really doesn't appeal, why not enrol your dog in an indoor class? Brush up on their manners and obedience or try a tricks class or a scent work class – there are so many options out there.
- ❖ Play games with your dog. Play tug with your dog or have someone hold your dog while you hide their favourite toy or treat. Buy puzzle toys like a Kong or a maze ball or make your own puzzle toys using cardboard boxes, an old towel, or a plastic container. There are heaps of dog entertainment ideas online or come in to the clinic and ask us for inspiration.



Mapua Clinic 5402329  
Motueka Clinic 5288459  
Richmond Clinic 5445566

[www.vetcentre.net.nz](http://www.vetcentre.net.nz)

*"Personal Care for All Animals"*

NZVA Best Practice Accredited  
(Tasman's only accredited Practice)

## Tasman Bible Church

In 1932 a small group of friends gathered in a house owned by the Paynter family on an orchard on Hortons Road and started a



fellowship that began the history of the church in Tasman. The Gospel Hall was eventually built in Tasman in 1953 on the corner of Williams and Aporo Road.

Keen involvement in the community had always been a hallmark of the fellowship and in an era now gone it was characterised by the hugely popular "Harvest Time" meetings for workers on all the orchards in the area. Evening meals were provided and a sing-a-long group performed. To this day harvest workers still frequent services in the Church and recently some Samoan workers shared about their home villages and sang several items – with great voices, enthusiasm and harmony . . . as only Samoans can do!

In the earlier years church members drove around the district and transported young people to special rallies and camps for youth. This continues today and every Wednesday evening a youth group called FORGE meet in the building and once a month connects with other youth groups in Richmond for special events. This all helps provide much needed activities for our rural young people.

One highlight in the community is the Mainly Music programme, which supports young families with a fun music and games event for pre-schoolers. With morning tea provided, 'toy time' and crèche facilities, this gives parents some help with things to do while bonding with their young ones and is great for meeting and mixing with other parents in the area.

"The Church is so central in Tasman and has always been a gathering place for the community", says Pastor Greig Caigou. "I love that locals are really supportive and feel at home attending programmes we provide or

using the facilities for their own functions."

The Ruby Bay Coastal Garden



group is one example of a community organisation that uses the buildings on the corner of Williams Road. They have around 100 enthusiasts who meet in the facility each month, with visitors always welcome to attend, and the place is really buzzing on that day, says Mr Caigou. "There's a modern kitchen, and a carpeted hall for them, with seating for over 100 people. Great heating and a full audio system is a bonus and the hall and outdoor deck allows us to spread out for even bigger groups. "Church services suit many styles, and families with young children, youth and older folk all mix in well, with a multi-generational, multi-cultural fellowship. Feedback is that people appreciate the real family feel to these gatherings.

Mr Caigou says; "I'm finding that newcomers to the area want to engage with local businesses and identities and want to quickly fit in with our lifestyles. With our rich and longstanding history here we trust Tasman Bible Church will continue to meet needs and serve this community well."



Part of the Tasman  
Community for over 50 years





3rd Friday monthly, 10:30am



Wednesdays @ 10am

— Church Service on Sundays @ 10:00 —

# Tasman Bay Christian School

Open now for enquiries, new enrolments, etc.  
email [office@tasbaychristian.school.nz](mailto:office@tasbaychristian.school.nz) or call  
03-5266855 to confirm a suitable time to visit!

Our semi-rural school has modern facilities, well equipped, spacious classrooms, and skilled teaching staff.

- Helping each child grow toward their full potential!
- Character development and Christian values
- Free transport from Moutere, Motueka, Mapua

Check us out online @ [www.tasbaychristian.school.nz](http://www.tasbaychristian.school.nz)

## ***Classroom overcrowding?***

Our class sizes will never exceed 15 students in the Junior Rooms or 25 students in the middle and senior rooms.

## ***1-on-1 teaching for your child?***

Every child will receive individual attention and educational support according to their needs.

## ***Teachers as role models?***

Children learn how to behave and interact with others based on the example set by teachers!

## Baigent Reserve, Kina Peninsula



The Silver Birches that suffered saltwater damage in early 2018 have now been removed.

Despite periodic checks by local police and TACA committee members the central area of the reserve has again suffered from periodic hooning that rips up the grass that was re-seeded after the major damage done last winter. Part of the shade sail was also damaged recently and is undergoing repair.

TACA has again considered measures to try to prevent such anti-social activities. These have included installing cameras or barriers, or allowing a traveller to reside as a caretaker. Hooning has stopped at similar remote sites when physical barriers have been erected. However, the majority of residents wish to avoid placement of barriers that would both alter the appearance and restrict usage by visitors who care for this environment. TACA is also mindful of the cost factor to ratepayers of some options.

We favour a “caretaker” traveller to be allowed to reside at the site. This has apparently been

successful elsewhere in stopping vandalism and dumping of waste. Lack of potable water on site is an issue but TACA is actively exploring with TDC whether the caretaker option can be trialled.

TDC is about to embark on a detailed review of the classification of all land it manages in our council ward. TACA has already ensured that TDC will fully inform and consult with us about any proposals for the public land in our locality. The person in charge has been invited to attend the TACA AGM on Thursday 25<sup>th</sup> July to explain to residents what the review entails. All residents are encouraged to attend so that they can be well informed about the process.

There have been murmurings linked to this review about whether Baigent Reserve could be opened up to freedom camping but TACA has notified TDC that we would strongly object to any such consideration. This will be reinforced at the AGM discussion.

TACA is closely allied to a newly-formed local environmental group (MITER) and information about the group’s aims is provided in this newsletter. Baigent Reserve, followed by the rest of the Kina Peninsula, has been identified as the initial focus area for becoming predator free. MITER and TACA will be joining forces to encourage volunteers to help us with this task as part of the Predator Free NZ government initiative.

Richard Clement

## Moutere inlet restoration (MITER) update



Over the last few months the informal group addressing our local environment, focussed around the inlet, has taken a few significant steps addressing how we might work in the area and with other external groups.

### **Planning**

The first is the development of a draft plan to provide a framework to guide future efforts. This now needs to be refined with additional input that merges good science with community aspirations. DOC has a framework model that identifies priorities and we are hopeful of DOC support in applying this to our area. For community involvement, we are working with the Tasman Environmental Trust, who support a range of

activities in the Waimea inlet, to arrange two community workshops, one focussing on the Waimea inlet and the second on the Moutere. These aim to bring the respective local communities together to identify priorities and capabilities, that can then be merged with the science priorities to create an achievable work plan built on local support.

### Structure

As yet we are an informal group driven by enthusiasm but with no formal structure. We are considering what would best serve the local needs, remain simple, be acceptable to external funders, and effective over the long term. We do however have a formal name for the overall project: Moutere Inlet and Tasman Environmental Restoration, MITER for short. Sub-project names under this umbrella will focus on a specific aim e.g. Predator Free Kina was our March application to DOC for baseline funding of a 3 year kick-start project.

### Funding

Many in the community are already providing time and material to support planting, weeding and trapping activities. Several funds exist to support local efforts and we have applied to the Kiwibank Predator Free Communities and DOC Community Funds. These are highly competitive funds and unfortunately the Kiwibank proposal was unsuccessful. We await news of the DOC Community Fund Predator Free Kina application. Regardless of the outcomes, submitting these applications has been a great way to refine and focus our planning. Future applications will be a key part of our existence.

### Working externally

Members of our group continue to develop relationships with relevant agencies and volunteer groups. These include DOC, TDC, TET and local groups such as the Mapua Dawn Chorus. A recent initiative by the Landcare Trust will see the formation of a stream care group in Upper Moutere. Since this is a major contributor to the inlet we will maintain contact with this group.

A group comprising all the councils in the top of the south, DOC and iwi have come together to create a biodiversity strategy for the region – Kotahitanga Mo Te Taiao. This will be publicly launched on 28 June and will provide guidance for our efforts. There is also the Tasman Biodiversity Forum sponsored by TDC that meets twice a year – we will

continue to engage and share information with this wider group.

### Where to next?

- Decide on science-based restoration priorities
- Hold the community workshop to identify local priorities
- Refine the plans and design specific actions on the ground
- Finalise a structure and seek additional funding
- Continue to grow our support and hence efforts – your inlet needs you

For further information contact Murray Poulter at [mpoulterx@gmail.com](mailto:mpoulterx@gmail.com) or Richard Clement at [rscllement@xtra.co.nz](mailto:rscllement@xtra.co.nz).



Time seems to be whizzing by so far in 2019. We have been busy working with primary and secondary schools from across Te tau Ihu (Top of the South) and beyond. We have 2 new programmes for our youngest students, (Years 1-4), creating a fun environment full of challenge and environmental learning. We have been visited by international groups who interact with some of our secondary students, which has provided incredible opportunities for learning and discovery for everyone involved. Our main programmes continue to be Trades Academy and school camps and it is awesome seeing so much growth and development

in our young people as they visit us throughout their school years on different programmes.

Coming up are several holiday programmes including Adventure Skills Development in October (15+), Junior (yr7-8) and Senior Journeys (yr 9-11) and Go Wild (yr 3-6). In the summer break we are taking enrolments for these



programmes and it always pays to get in early! On top of this, WIO is an Adventurous Journey provider for Duke of Edinburgh and we have several opportunities for all levels of the Award – see our website or contact us for more details.

We thank you all for your continued support and look forward to seeing you on our programmes or meeting you out in the community.

Web: [www.wio.org.nz](http://www.wio.org.nz)  
Email: [info@wio.org.nz](mailto:info@wio.org.nz)

## Tasman Area Community Association

Support your Association to continue their work. TACA was set up in 1989 with the purpose of: *“Protecting and enhancing the well-being of the residents and the natural resources of this area”*.

These people have the best interests of the community at heart and meet on a regular basis to discuss local issues & arrange community events.

Everyone is welcome to attend any meeting.

### The “Who’s Who” in 2019 at TACA

David Short	Chairperson	526 6877
Tony Clark	Acting Chair	526 6171
Brian Hanlon	Secretary	03 970 0565
Greg Dryden	Treasurer	526 6151
Steve Richards		526 6742
Roger Percivall		526 6230
Paula Short		526 6789
John Tristram		526 6109
Richard Clement		526 6707
Jon Taylor		027 246 5045

**TACA meetings**  
**Last Thursday of every month**  
**(no December meeting)**  
**Tasman School Staffroom**

**AGM**  
**Thursday 25th July**  
**Tasman School Hall**

## Membership 2019

The association is a voluntary group, which relies on annual membership subscriptions, sponsorship and grant applications to carry out the work they do.

Membership is \$5.00 per family or \$2.00 an individual. To join please complete the section below and post it to Greg Dryden, 14c Kina Beach Rd, Tasman 7173 or drop it with your donation to the Tasman Store or by internet banking. Subs for 2018/19 are now due.

Name.....

Address.....

.....

Phone.....

Email.....

Amount enclosed \$.....

Receipt needed (circle) Yes No

For direct credit online, please pay to Tasman Area Community Assoc., Westpac, Motueka Branch Account No. **03 0693 0141622 00** & include your name and initials as per the sample bank statement box below.

#### Statement Details

Details to appear on your statement <sup>2</sup>  
These fields help you identify what the payment is for

Particulars	<input type="text"/>
Code	TACA
Reference	Annual Sub

Details to appear on recipient's statement <sup>2</sup>

Particulars	Your Name
Code	TACA
Reference	Annual Sub