

Tasman Times

June 2025

From the Chair - Greig Caigou

Typically, a Chair's report might cover what has been going on in the Tasman Area Community Association (TACA). However I don't need to do that as you'll be able to gather the scope of activity from the various commentaries and reports within this edition of your bi-yearly newsletter:

Open up . . . Read on!

Or, sometimes, the Chair's report would be a 'call to action' in terms of volunteering on behalf of your community. But therein lies a hurdle. The fact is a lot of us also have a sense of community outside of Tasman village and our TACA catchment (Mairiri to the Ruby Bay cliffs). Our sense of community might revolve around who we associate with at work, in school hubs or recreation clubs and churches for example. Aside from perhaps interacting with a couple of neighbours we may be totally disconnected from this Tasman community.

So is it even necessary to build a sense of community here in Tasman? What's the point of yet another set of friendships and commitments on top of the ones we already struggle to maintain in person, as well as online?

Sometimes it's extraordinary circumstances that forge a sense of greater community. Civil Defence emergencies can create community out of need. The pandemic did this to some extent as well. We all learnt to take our place sitting out on our streets or over a fence in order to maintain some social connections (albeit at 2m?!)

As the current Chair of TACA I don't have any answer to these matters, and how we live our lives in 'pockets'; so unlike the earlier versions of doing life in this rural community. Back then tools and labour got shared between locals, at haymaking and harvest times. What I do know is that we are social creatures and need to live in relationship to others. One of the roles of your TACA is to lubricate the relationships that influence the way we live and thrive locally.



What that looks like includes volunteerism (we could do with some more faces on the TACA committee!), getting involved in local projects like our planting programmes, and emergency preparedness or getting to know what we each could contribute if called upon by some event that requires us to all pull together here.

In these ways we can build the kinds of networks that make each of us useful alongside our neighbours. In this respect we can start local, build local.

So, my encouragement at this time is for you to foster networks amongst local people, while of course maintaining your other existing family, work, spiritual and recreational connections. Becoming familiar to others, extending your 'family', has a dynamic advantage that works both ways as we move somewhat away from independent living to become more inter-dependent.

That's what other healthy, thriving ecosystems depend upon.



Greig relaxing near the top of Lewis Pass recently

Two simple steps to help get started:

1. Meet a neighbour. See if they need any help.
2. Attend one of our local interest evenings that TACA will host this year as part of Vision25. We've had one already, attended by about 30 people, see next page. We have two others proposed through this year.

Nga mihi and cheers

Greig

Secretary's Stuff - David Short

Earlier this year, as our Chair has indicated, the TACA Committee had been doing some soul searching and has formulated its 'Vision 25' to encourage more people to become involved, through some special interest meetings.



The Tasman Stream Project

Our first such community meeting in April kick-started our Tasman Stream project and inspired almost 30 members of our community to attend. In a thought-provoking address Liz Gavin spoke about her family's involvement with their Wakapuaka Mouri planting project where over 70,000 trees have been planted along the Wakapuaka River since 2020.

She also reflected on the challenges to their project, how they had recovered since the August 2022 flooding, the lessons learnt and the benefits of community nursery and planting days. It generated many questions relevant to our own project.



Wakapuaka planting project

Local Shawn Lawson followed that with detail of the amazing successes he and his fellow Williams Road residents are achieving with their riparian plantings in their local stream, a great trailblazer for our whole catchment project.



Our next step will be to begin formulating a stream catchment plan with the help of local stream expert Mike Harvey, our Council catchment adviser Helen Forsey and local freshwater expert Elliot Easton.

So for those who have already indicated their interest in our project, watch this space for more info. Working out some low-hanging fruit that will allow us to make some early progress on riparian plantings in our sub-catchment will be helpful.

Anybody who still wishes to become involved at some level in our project, please contact me on iamdavidshort@gmail.com.

Next community meeting

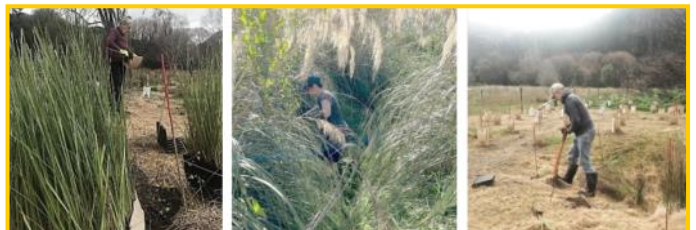
Our next community meeting will take place at our AGM in August. Note that it is a month later than normal to allow our Treasurer to have our annual accounts up to-date.

If you would like to consider joining the committee, may I suggest to come along to a committee meeting; the last Thursday of every month, upstairs at Tasman Church.

Or email me at secretary@tasmancommunity.org.nz for more information.

<https://www.tasmancommunity.org.nz/taca>

David



TACA AGM

Thursday 28 August 7.30pm

**Tasman Church
corner of Aporo & Williams Rd**

**Guest Speaker Topic -
Civil Defence Emergency
Preparedness**

**Election of officers to TACA
Committee**

Light supper

QR Codes

You'll notice QR (Quick Read) codes appearing within the Tasman Times. These are shortcuts to websites you can open by holding your phone's camera over the QR code.

Here's an article on how to use QR codes, on both iPhone and Android phones:

<https://www.digitaltrends.com/mobile/how-to-scan-a-qr-code/>



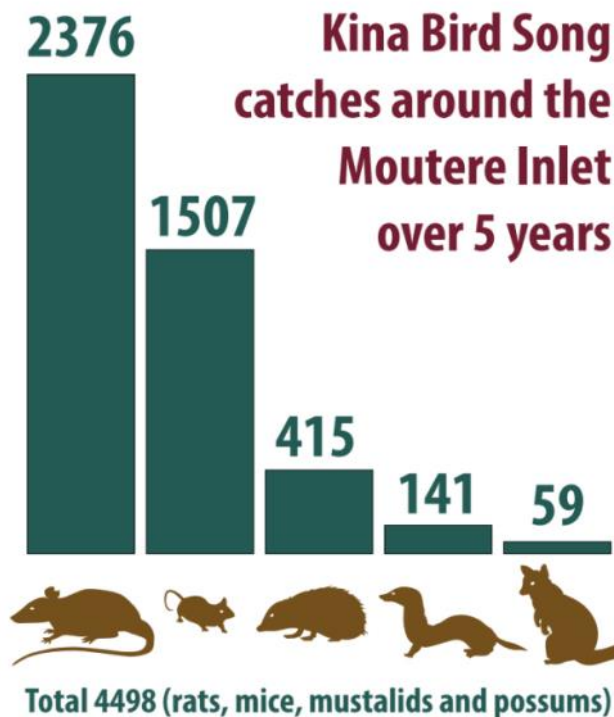
Try it!



Kina Bird Song - David Easton

We are growing in numbers; more people are joining and more pests are exiting!

With well over 4000 predator kills recorded by TrapNZ over the last five years in the Kina Bird Songs area, we are all making a difference. Traps are set from the top of the Bluffs at Ruby Bay to Thorp Bush in Motueka. All checked, emptied, cleaned, rebaited and reset by volunteers. And yes, there are many traps out there that are not in the TrapNZ system so the total number of kills must be even higher.



Without people it would never happen. With limited public spaces in our area and more biodiversity plantings occurring on private land, locals are stepping up, planting and trapping.

Below are three of our many volunteers who make the Kina Bird Song project such a success.

First is **Paul Cossey** from Mariri, checking traps at Baigent Reserve in Kina. Paul is an experienced trapper who previously checked traps for the 'Farmers for Whio' group, up in the Motueka valley.



Here **Mark Falloon** is collecting some traps for the lines at Batchelor Ford Road, the estuary walkway in Motueka, the Sanctuary Ponds and Thorp Bush. Mark and his team members Paul Leach and Grant Douglas are also experienced trappers.



We also have traps out along the walkway of the Te Mamaku plantings. These are being checked by **Stella Dryden**, pictured looking into a Trapinator possum trap. Already two possums have been culled. Possums are devastating for our Kererū. We look forward to a future when the walkway will be full of bird song!

If you want to join us, if you want traps, bait, lure or advice please contact David or Tim:

David on 021314902 or

david@kinabirdsong.nz

Tim on 0210314257

info@kinabirdsong.nz

- Go to TrapNZ online, search for Kina Bird Song, or scan:



David

Find us on Facebook



www.tasmancommunity.org.nz

Jester House Cafe

A warm welcome every Friday at
Tasman's best café

Join those who know that
Jester House is
open every Friday
from 10.00 until 4.30 pm
(Closed for Matariki 20th June)
To make a booking phone
03 5266742
or email judy@jesterhouse.co.nz

elevation survey&design

IMPARTIAL • INDEPENDENT • EXPERT

**Consultants for consenting and compliance
for all things built – new and old.**

As a building surveyor, I act as an independent and impartial expert, providing advice and evidence on compliance and in legal disputes over construction matters, including defective workmanship and leaky building claims.

Certificate of Acceptance – COA

Building Consultants

Architectural Design

Compliance

Consenting

Surveys

IQP Inspections



Shawn Lawson

027 292 6728

Building Consultant

Building Surveyor & Inspector

Architectural Design

www.elevationdesign.co.nz

Simply Septic SEPTIC TANK CLEANING



Kevin or Murray
Ph 03 5448032

**For all your excavations, water
and septic tank installations,
house pads, driveways,
gravel cartage**



TRUCK & DIGGER SERVICES
JASON BROOKS 027 274 3657

**Give me a call to discuss
how I can help with your project**

LEH Baigent Reserve, Kina Peninsula - David Easton

Baigent Reserve at Kina is a beautiful place to be over the winter months. Hopefully the snow on Mt Arthur will arrive (like it used to in early April, 40 years ago) and reflect off the calm Moutere waters. Sit, walk and play at Kina, a local treasure to enjoy. It is only a little over 10 years ago that the community took over the Reserve, after the previous corporate owner wanted to subdivide and sell. What a big weedy mess it was. Now thanks to your efforts, it is constantly improving as a place of beauty.

With the sun lower in the sky, the picnic table on the front beach is a perfect spot to sit in the early morning; there's perfect midday shade from the Pohutukawa in summer and yet warm sunlight in winter (below).

Sadly, on the night of 20th April a storm came through and broke a post supporting the shade sail at the Reserve. Steve Richards and Hamish Rush are organising the repairs. Which will mean replacing at least one post and getting the ripped sail repaired (right).

Are you interested in helping with the maintenance and attending working bees at Kina? If so, could you please email david@kinabirdsong.nz and indicate that you would like to receive notices of activities.

On July 5th we plan to hold a working bee there to remove a few weeds and wattle seedlings; and prepare some previously sprayed areas for planting. The planting will take place at a second working bee on Saturday 19th July. Both working bees start at 9 am, smoko break at 10.15 and hopefully will be finished by 11.30. Please bring gardening gloves.

The plantings will continue along some of the new tracks that have been put in by volunteers, replacing blackberry with more people-friendly foliage. Pohutukawa seedlings, Sand Kanuka and Ngaio are ordered for planting.



The little Blue Penguins are coming ashore for nesting all along the shoreline of Tasman Bay at this time of the year, so please keep any dogs you have under tight control near the beaches at the Reserve. It is perfectly OK to let them out under your control in the open area around the Baigent Memorial.

Thanks to Paul Cossey for continuing the Kina Bird Song trapping at the Reserve, ably assisted by Pete and Linda. Please put Saturday the 5th of July in your diary to help at Kina.

David



Community Emergency Preparedness Plan

- Richard Clement



Scan to read the plan



This Plan provides information about what our community needs to be aware of and how we will attempt to respond if an emergency arises that needs centralised leadership.

Our plan was the first in Tasman District to be accepted by NTEM. It

will be reviewed in July/August and early next year: probably annually thereafter. It's a living document, so ideas from the community at large for improvement will be welcome. Please email rclement49@icloud.com with suggestions.

TACA's email database was used late last year to seek information about equipment and skills that residents would be prepared confidentially to identify for potential usage in an emergency. David Short also provided invaluable assistance in developing the survey format. About 20 households responded. Many thanks again for your positive input. Summary info was incorporated into the confidential part of our Emergency Preparedness Plan. This part is held only by our 6 member emergency response team. Full survey details are held confidentially only by myself, my deputy Dawn and David Short.

Our emergency response team had a useful meeting with some church members in April to discuss respective roles when activating the community Centre. Some volunteers have also taken part in additional training. The more people who have undertaken Civil Defence online training the more efficiently we can respond to an emergency, so **if you are interested in becoming a CD volunteer** please get in touch with me by email, TXT or phone 027 526 6700.



Photos: Thanks to Nelson Mail, Brendon Fastier



Household Emergency Plan and Supplies

To successfully manage an emergency situation households should use the CD list below. Be aware that work and schooling may separate family members, so try to develop a plan that will help keep everyone as safe and contactable as possible. An essential task is to have an **emergency kit** that could sustain your group with basic food and water rations in case you won't have access to shops.

Keep in mind that you may need to be self-sufficient for several days if a major emergency occurs where there is widespread devastation and infrastructure failure. Two or more emergencies may combine and place extreme pressure on government agencies to prioritise where assistance is most needed. Communities therefore need to be resilient, prepared and as self-supporting as possible.

Things you should do to prepare for an emergency

- Create a central point of contact outside your community for your family in an emergency.
- Consider who in your community may need extra support during an emergency and have a discussion with them on how you might be able to support them.
- Make a household plan
- Make a pet plan
- Have a 'grab bag' ready
- Join 'Top of the South Neighbourhood Support' and 'Get Ready'
- Check out Fire and Emergency New Zealand



Richard

During an emergency event

Call 111 if life or significant property is at risk

Shelter in place if it is safe to do so

Follow your Community Emergency Preparedness Plan



Complete care for your animals

Our committed veterinary team pride themselves on delivering optimal care with personal service.

Our services include: Vaccinations • Health checks
• Medication • Premium food • Health plans for farm/
production animals and more...

Pop in or call one of our three Tasman clinics to chat about your animal health care needs.

MOTUEKA 400D High St 03 528 8459	MĀPUA 69 Aranui Rd 03 540 2329	RICHMOND 79 Gladstone Rd 03 544 5566	vetlife.co.nz
---	---	---	----------------------

VLA0015. Vetlife is a registered trademark - all rights reserved.

POM TOM MECHANICAL

All makes and models

- WOF
- Servicing
- Maintenance
- Diagnostics
- Repairs

Tom Russell
141 Williams Road, Tasman
022 1204150

TĪ KŌUKA GARDENING SERVICES

Garden maintenance, creation,
pruning, hedge trimming, topiary,
vege gardens & big clear ups

Harry Cawood | 022 081 2824
tikoukagardening@gmail.com

RUBY COAST NEWCOMERS SOCIAL GROUP

WHAT IS IT? An easy way for Tasman and Māpua newcomers to socialise, make new friends and learn about the area from other 'recent' locals.

WHERE? We usually meet at the Tasman Store and Café, occasionally elsewhere.

WHEN? Last Friday each month from 10 am.
An email reminder is sent.

There is NO OBLIGATION to attend!
Just come along when it suits you.

We also host occasional ad hoc
'bring a plate' social get-togethers.

CONTACT

Vivien on vpeters1949@icloud.com
or 027 5266707

or

Richard on 027 5266700
rclement49@icloud.com



- Neetha Mudhan

It's been an exciting few months at Tasman Bay Christian School, learning all about the wonderful creation around us and looking at how technology has evolved. Our students participated in a variety of experiences that enlightened them on key concepts they were learning about.

Sophie Crockett and Olive Cook represented our school at the local ANZAC Day commemoration. It was inspiring for our tamariki and whānau to hear about how honouring it is to serve our country.

Tasman District Council is a member of the International Mayors of Peace network. Mayor Tim King encouraged young people in our district to join the global art competition to explore and promote peace in our communities. Selected works were sent to the Mayors of Peace Secretariat in Japan. This year, 4208 applications were received from 123 cities in 21 countries.

Congratulations to **Viva Winslade** for winning the 6-10 year old category. All artwork that wins the Mayors for Peace Presidents International Award will be used to promote awareness around the world of the importance of peace education. See page 18.



As part of our Pondering Creation theme in Term 1, our Years 1-2 tamariki in Rūma Tahi were daily looking eagerly into an incubator, waiting to glimpse eggs showing any signs of cracking. Sure enough, on Day 21, 'Alpha' popped its head through to greet the world and most especially, the tiny faces that looked down in awe. Our tamariki, Whaea Erica

and Mrs Vette looked after the eggs incredibly well for the three weeks. The chicks, named Alpha, Joy, Michael Jackson and Onion, even had weekend visitors!

Tasman Bay Christian School is part of the Garden-to-Table programme. We put our name into a draw to win a bumblebee hive late last year and we won! The students helped to open the door and let the bumblebees out; they had travelled in their hive all the

way from Auckland. Thanks to the NZ Bumblebee Conservation Trust. The Trust also gifted us 18 books titled 'Bumblebees have smelly feet' so that we can do some in-depth learning. If you would like to look at our bumblebee hive, we have placed it in the front school carpark where it can thrive peacefully.

As part of our theme, Pondering Creation, our students had a great experience visiting two local streams with Educators Caz and Kate from Tasman Bay Guardians (Whitebait Connection). They became freshwater scientists testing the water quality and discovering the breadth of the biodiversity of life. Exciting finds included a baby eel, various macroinvertebrates including some very sensitive dobsonflies, and several cased caddis. The students also did a night visit to the Tasman Stream to discover what night-life there was and to appreciate different species that emerge then.



I have loved watching our tamariki participate with great enthusiasm in all that our kaimahi has planned for them. It is a privilege to walk alongside them as they appreciate the wonderment in learning new information.

Neetha Mudhan, Principal/Tumuaki

About us...

Our mission at TBCS is to provide a Jesus-centred primary education for students from Year 1 to Year 8. We cultivate academic growth, support social development, and nurture spiritual enrichment for all students. Our holistic curriculum nurtures the whole child, equipping them with knowledge, Christian character and a passion to positively impact their communities and the world.

TASMAN BAY CHRISTIAN SCHOOL

WHERE FAITH, SHAPES FUTURES

Enrolling now for 2026 and beyond...

Come and join us!

ADVANTAGES OF AN EDUCATION AT TBCS

- Transformative faith-based education and well-resourced environment; equipping our tamariki for success in a changing world
- Dedicated team that fosters spiritual growth and character development
- Free transport for whānau living from Riwaka to Richmond (including Motueka and Māpua)

GET IN TOUCH

021 036 8133

office@tasbaychristian.school.nz

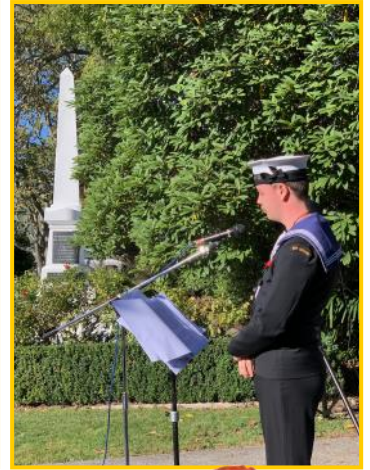
www.tasbaychristian.school.nz

6 Williams Road, Tasman



ANZAC Day at Tasman

Photos by Zoe Nuttall, Michael Nuttall and Marijke Caigou



Students from both the Tasman school and the Tasman Bay Christian School delivered a variety of poems and readings as part of the commemorative service, together with Michael Nuttall (lower right) of Awa Awa Road, who himself attended Tasman School and is now training with the Royal New Zealand Navy.



CHRIS BUTLER 



BUILDERS

T 021 02483410 E chrisbutlerbuilder@gmail.com



Stephanie Wright
Practitioner of Tibetan Medicine

Tibetan Medicine
Tibetan Acupuncture
Tibetan Massage
Cosmetic Acupuncture

021 169 0218
swchiro@gmail.com
www.stephaniewright.co.nz



Te Mamaku Native Corridor



Proudly supported by


TASMAN
ENVIRONMENTAL TRUST

- David Short and Michael Markert

The 2025 winter planting has seen the first 4,000 trees (a generous allocation from Trees That Count and supplied by Westbank Natives and Titoki Nursery) going into the ground in the last two weeks of May!

Since the last planting in winter 2024 we have cleared and mulched all remaining land up to the top of Williams Road at the end of Block 6, mainly with the help of a Pub Charity grant. This winter we will plant Block 3b and Block 4. Blocks 5 and 6 are earmarked for planting in 2026.

Grants from the big funding organisations are getting harder to win and these have mainly secured the recent years of our project. Now, we are extremely happy that multiple donations from individuals and local companies are playing a big part in our current funding. A big thanks to these supporters, you keep us going! Please support our supporters—find out who they are by scanning this QR code :



Te Mamaku Drive plantings

Generous top ups have also been received from the Lion Foundation, the Sargood Bequest and the NZ Motor Caravan Association. We await the outcome of a small number of grant applications in coming months.

The planting was done by our trusted local contractors Brent and John (www.revegetation.co.nz) and volunteers were quick to install weed mats and plant guards before the rabbits and hares found them.

We will plant more trees in July and need your help. The final number of trees to be planted this year depends on ongoing donations coming in. **\$10** (tax deductible) will finance one tree, its plant guard and weed mat and spray maintenance for one year.

Go to <https://www.tet.org.nz/get-involved/donate> or scan the QR code here, and select Te Mamaku Native Corridor from the projects list on the left.



Thank you! **David and Michael**

Find us on Facebook



www.tasmancommunity.org.nz

Tasman Store News

- From the Tasman Store team.

The Heart of the Village: Winter at The Tasman Store

Tucked away in a cozy corner of Te Tau Ihu, the Tasman Store is more than just a café—it's a place where heart, community, and craftsmanship come together. As winter settles in, the store has brought back its much-loved soups, warming the soul one bowl at a time. Quoting Ludwig van Beethoven: "Only the pure in heart can make a good soup."

And no one embodies that better than Louie—part chef, part wizard, part unofficial town therapist—whose kind heart and generous spirit are baked, stirred, and occasionally spilled into every corner of the store.

Whether he's ladling out soup like it's a sacred elixir, crafting home-made pies with suspiciously magical crusts, or whipping up baked treats that disappear faster than your willpower on a Monday, Louie ensures everything is made with care and panache.

The rich aroma of coffee also fills the air, with beans roasted on site for a truly fresh brew—an experience both locals and visitors savour. Whether you're stopping in for a hearty lunch, a treat, or a warming cup of coffee, the Tasman Store offers a comforting reminder that simple, honest food can bring people together—especially in the colder months.

To keep you snug while you enjoy a treat we have added screens on the back deck to keep the warmth of the heater in.



Our Winter Hours are:

Monday to Friday 7.30am - 4pm

Saturdays 8.30am - 2pm

See you soon.
From the team.



Superior Marketing
and Honest Approach

Get it at a Fair Price!





Nicola Drummond

 **027 359 7659**

 **nicola@krealestate.co.nz**

Rebecca K Ltd. Licensed REAA



MOUTERE CARAVANS

Your one stop place for all your caravan needs!



Corinne Frank Lukas Matt

SHOP & WORKSHOP: OPEN
TUESDAY to SATURDAY, 9am to 5pm

**219 Old Coach Road, Mahana,
Upper Moutere, Nelson**
Phone: 03 5432668
info@mouterecaravans.co.nz
www.mouterecaravans.co.nz

Where did those Kina Cliffs come from?

- Simon Thomas

If ever I needed to be reminded of nature's powerful forces, a stroll along Kina Beach at high tide to take these photos would ensure it. Busily admiring the view and trying to keep my shoes dry, a hail of deadly Moutere Gravels landed just metres behind me.



In time said gravel will no doubt become a new ocean bed or cliff. But it made me wonder, as so many must have done, so many times, exactly how our beloved and much admired Kina Cliffs came to be.

Back in my days of studying geology we depended on hammers, magnifying glasses and notepads (and I mean the paper ones). Trying to decipher the underlying structure of the ground beneath us, its age, shape and mineral composition, its provenance and history, was the stuff of magic, mystery and outright guesswork, ably assisted by the occasional peep into a research paper written by someone who knew more than I did.

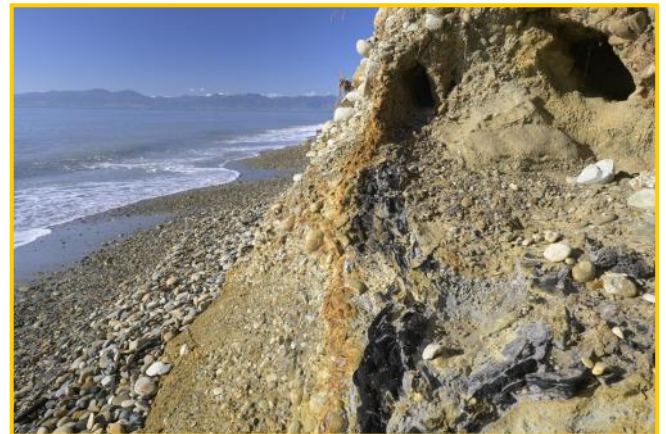


Moutere Gravels –Kina Cliffs

Although they were available to big industry, machines that could detect magnetic anomalies or register seismic refractions were to us futuristic, like calculators and digital watches. However, more readily available technology now shows the Kina Cliffs are part of the geological rock layer called Moutere Gravels, a rich mixture of mud, sand, pebbles and stones, which are a mixed blessing to those of us trying to establish gardens in it. As it breaks down into clays it is on the one hand water-retentive and nutritious, yet on the other hand, far from friendly to all species of flora.

What goes up will surely be eroded

Their origin? Around 3 million years ago the Southern Alps began to be heaved up by the collision of the Pacific and Australian continental plates. Then, on a somewhat larger scale than still happens today, deluges of rain and fast-flowing rivers tore away at the Alps, slowly shifting a gazillion tonnes of mixed rock Northwards towards the Tasman Sea. There were natural valleys for it all to settle into, as it was deposited from around 1.5 to 0.5 million years ago from huge, braided rivers along what is now the Waimea Valley from Glenhope to the coast between Richmond and Motueka. 500-1000 metres thick, the gravels contain plants and pollens that offer a useful indication of their age, together with fossilized trees of Southern Beech and other conifers. You can see these petrified trees, often with parts still slightly woody, poking out of holes in the cliffs.



Petrified, fossil trees

The Tasman coalfield

In the 1960s seismic studies suggested something dense and potentially coal-like below the Moutere Gravels, leading to several exploratory wells being drilled in the 1980s from Tapawera to Ruby Bay by the Petroleum Corporation of NZ. Expectations were high but short-lived when the dense sub-layer drilled up was not black, but grey and gravelly. Not coal, but limestone and an earlier iteration of Moutere Gravels. And thus, the Tasman Village Colliery was not to be.

The beach of course is composed of weathered cliff-face. How much further will it erode? Well let's just hope the Tasman Golf Course retains at least 9 holes. And one day, in the fullness of geologically uplifting time, nature will no doubt recycle the beach into another cliff face, ready to crumble upon a new generation of amateur geologists. I literally can't wait.

Simon

Can you help NTCTT get this youth initiative on the road?

The Nelson Tasman Community Transport Trust (NTCTT) is working on a new Motueka community transport service to link our Motueka youth to continuing education in Nelson; a direct transport service into NMIT. This is aimed at a number of our young people who are willing but not able to take advantage of the



opportunities for continued education, because of lack of affordable and rapid transport to and from Nelson.

NTCTT is in the very early stages of planning this pilot scheme. But before we can do anything, **WE NEED VOLUNTEER DRIVERS!** Maybe people who are already commuting from Motueka to Nelson on Monday to Thursday or even someone from our own Tasman area who could donate their time for a worthwhile cause? Time is of the essence, as Police vetting procedures can take up to 20 working days to process.

We hope to pilot this express service from July to November 2025, likely involving just two stops in Motueka then directly on to the Nelson NMIT campus.



Weekend Bus Services



Affordable and accessible public transport provided by the Nelson Tasman Community Transport Trust with a team of friendly volunteer drivers
Plus we carry your bike if booked



To meet the NTCTT criteria for driving, you need to be 25+ years, hold a current full NZ Driver's licence and be happy to complete the NZ Police vetting application. We offer a full induction with the vehicle and training for the role.

If you might be interested, or know someone who might, please contact Jude at NTCTT:

jude@ntctt.org.nz or 022 682 2373.

Why not use public transport to get to Richmond at weekends?

SATURDAY		SUNDAY	
Motueka to Richmond		Motueka to Richmond	
Departing	Route Stops	Departing	Route Stops
9:30 AM	Motueka isite / Library	1:00 PM	Motueka isite / Library
9:45 AM	Tasman Store	1:15 PM	Tasman Store
9:55 AM	Mapua Community Centre	1:25 PM	Mapua Community Centre
10:05 AM	Westdale Road	1:35 PM	Westdale Road
10:10 AM	Bateup/Wensley Road	1:40 PM	Bateup/Wensley Road
10:25 AM	Richmond Mall / E-bus Interchange	1:55 PM	Richmond Mall / E-bus Interchange
10:30 AM	Richmond Aquatic Centre	2:00 PM	Richmond Aquatic Centre
Richmond to Motueka		Richmond to Motueka	
1:45 PM	Richmond Aquatic Centre (if booked)	4:45 PM	Richmond Aquatic Centre (if booked)
2:00 PM	Richmond Mall / E-bus Interchange	5:00 PM	Richmond Mall / E-bus Interchange
2:20 PM	Wensley/Bateup Road	5:20 PM	Wensley/Bateup Road
2:25 PM	Stringer Road	5:25 PM	Stringer Road
2:35 PM	Mapua Community Centre	5:35 PM	Mapua Community Centre
2:45 PM	Tasman Store	5:45 PM	Tasman Store
3:00 PM	Motueka isite / Library	6:00 PM	Motueka isite / Library

BOOK TO CONFIRM YOUR \$6 SEAT (AND BIKE) TODAY

PH: 03 528 6543



Nelson Tasman Community Transport Trust aims to create sustainable transport options for local communities and is supported by Tasman District Council and the Lotteries Commission

www.ntctt.org.nz

Effective from 1 December 2024

Motueka Coastal Bus

VOLUNTEER DRIVERS NEEDED

Can you help? No special licence required

Would you like to help your community?
Would you like to gain new skills?
Would you like to increase your social connections?

CONTACT JUDE AT:
022 682 2373
jude@ntctt.org.nz

FIND MORE INFO AT:
www.ntctt.org.nz

Nelson Tasman Community Transport Trust aims to create sustainable transport options for local communities and is supported by Tasman District Council and the Lotteries Commission



Jenny Mason

- Simon Thomas

I spent time with Jenny Mason at her beloved local camping ground in an effort to find out what makes us choose the road we travel.

Anyone who has spent time in a tent or campervan will know the freedom and simplicity that a life on the road affords. Born and raised in Taranaki, Jenny Mason has relished that lifestyle for longer than most, having spent decades taking a less frantic road through life than most. For many of those years she raised her three girls in a house truck, home schooling them in the ways of a rich and full life of travel and adventure around Aotearoa, before settling in Kina back in 2015. She'd stayed at Kina Beach Reserve many times, enjoying its informal atmosphere and beachside location, so it was no surprise when Tasman District Council, who administers the Reserve and campsite, offered her full-time work as its caretaker.



As I chatted to Jenny it struck me that the Reserve is a wonderful resource for both our community and for tourists alike. She's proud to have maintained that same old-fashioned, low-key, casual camping culture that visitors love and which is becoming harder to find. There are no fiercely delineated camping sites, no huge signs with rules and warnings and no swimming pools. Instead you'll get a very warm welcome, plenty of spots to park up right by the beach, a book library, a table with free items and a Pétanque court.

Fees are family-friendly and informal social gatherings are common. Jenny describes how over summer 'the snapper slayers arrive in droves', gathering fresh fish to share with others. It seems much more of a community than a campsite, especially as she's noticed a welcome return to pre-covid tourist numbers recently. And apart from the very odd case of unwelcome loud music, her friendly approach seems to have attracted what she calls 'just nice people'.

Unsurprisingly, regular guests are common. Jenny has made some great friends and looks forward to them returning year after year. Children love it too; a group of around 20 from the local Harakeke Preschool

regularly set up their annual 'tent city' by the beach. 'They have a great time', Jenny adds, 'I just leave them to it!'

Jenny has support from 2 maintenance chaps, Chris and Gaz, which allows her to escape from time to time, especially in the quieter months. She's about to head to Queensland to see two of her daughters. Whilst middle daughter Puna, who lives locally, has herself opted for the house-truck life she grew up with, Kaahu and Rayna have settled for more conventional homes – but homes they all are. Jenny's own home is her old and much loved Ford Thames Trader, vintage 1965. 'Its biggest issue is all the maintenance, just keeping it on the road'.



Far from missing the extra space of a regular house, Jenny loves 'keeping my life simple and uncluttered'. But best of all, 'living here I don't have to travel round visiting all my friends – they come and visit me!'

The world needs more people like Jenny Mason – a true Tasman local!

Simon

Mill Point Site Recovery Project, Kina Beach Road

- **Tony Pearson** – Working Bee Leader

WANTED – A Fox and a King Canute!

For what you may ask? – read on.....

Our last couple of working bees have been all about knocking the site back into shape, with spraying, whizzing, freeing up plants and staking new growth – particularly the Tataras which seem to be thriving on site – not sure why, but they seem to love the location! BUT – they are not the only things thriving on the Mill Point site.

The 'bunnies' are running wild and the dear little things are having a field day chewing off the new growth from the 50 or so Cabbage Trees we planted last year in the flood prone areas of the site. Those new-fangled cardboard plant protectors might be more 'Eco Friendly' than the green plastic ones but they are



not high enough to protect the plants from the furry varmints – as the picture of the two types of guard shows! The group has done a splendid job replacing all the short cardboard covers with longer green plastic ones and hopefully the ravished plants will recover and grow to full height.

I have sought advice from a couple of local experts on how to deal with the bunnies – responses were instantaneous – shoot them! Unfortunately I recently disposed of my own rabbit gun and I'm told I would not be popular releasing or encouraging a stoat to lay waste to the rabbit population – apparently they don't discriminate between fur and feathers!

In the UK from whence I hail, the good old Mr FOX does a splendid job in keeping the rabbit population in check – importing a few might present some issues but in the absence of any other means it's maybe the answer – I'm sure they could be kept under control! BUT seriously, any practical ideas to deal with the flourishing rabbit pest would be very welcomed!

And as for KING CANUTE -...

Well, as I reported in my last missive we have now taken on the maintenance of the adjacent plot of unregistered land that had been planted out a couple of years ago by TET (Tasman Environmental Trust). Initially it looked like there had been a good uptake of plantings but recent inspection has revealed some 50% loss to sea water inundation. With a few hardy

exceptions most of the planting in the lower-lying section have succumbed to a succession of high tides.

Some areas have permanent pools of salty water and – at a recent high tide - Red Band Gum Boots just could not match the depth of water over much of the site! But in other areas there is good evidence of growth. So we called in the experts to help with the way forward. The two plant experts and one very good Morning Tea organiser were Mike Harvey and David Easton, who plodded – or rather waded - over the site



for an hour. They advised that King Canute, who famously tried in vain to halt the encroaching tide, might have to accept the second failure of his reign, as salt water inundation is likely to keep coming, with regular high tides. Moreover,

flooding will be exaggerated when the Tasman Stream is in full flow – not to mention the predicted rise in sea level that is going to affect our area.

So they have come up with a planting plan to be developed over the next year or so that should see the site develop into a natural area with plants that can tolerate and indeed thrive, in spite of the pretty harsh conditions they will have to cope with.

With TDC's financial help we shall concentrate on planting the follow species:-

Saltmarsh Ribbonwoods, that occur naturally in profusion adjacent to the culvert bordering the Mill Point site, will get first planting priority – they apparently can cope with fairly regular immersion as can a grass/reed delightfully called **Oi Oi**, that is also on the site naturally but needs bulking up alongside the Tasman Stream. On the slightly higher ridge that runs across the site, **Ngaio** and **Flaxes** will be planted to supplement those that have flourished there as a result of the metre or so of height that keeps their toes out of regular sea water dowsing. Also maybe some **Coprosma** and **Manuka** that have been sourced from coastal areas like Best Island.



So..... a bit more of a mission that I had originally envisaged but there is no urgency for action. We will interweave the tidying up of the debris of the lost plants into our regular Mill Point maintenance plans and then progressively introduce those natives that will eventually call this site their happy home.

As always volunteers are welcome to join us for our regular sessions from 9.30 to 11.30 am on the first Saturday of each month.

Tony tonypearson@xtra.co.nz



Recognition for our impact

We were thrilled to be co-winners of the **Community Impact Award** at the Nelson Tasman Chamber of Commerce Business Awards, recognising the deep and lasting effect our programmes have across the region. Thank you to all our community funders and supporters who have been behind us all the way. See the video about our activities on our online blog (scan QR, right).



Whenua-Iti Outdoors staff

Adapting to a changing landscape

Like many in the community sector, we're navigating a changing funding landscape, and adapting to ensure our kaupapa continues to thrive. This means we're now offering more self-funded programmes, including tailored experiences for corporate groups and professionals. These options help support our core mission while offering meaningful ways for groups to build connection, leadership, and resilience. Learn more or make a booking, on our website.



Parklands School students at Kaiteriteri beach

Rangatahi leading the way

We're excited to announce the launch of our **Youth Leadership Council** - a new initiative that empowers rangatahi to have a direct voice in shaping Whenua Iti's future. This passionate group will help ensure our mahi continues to be relevant, responsive and youth-led, and it will also support youth to grow their leadership skills. *A big thanks to Motueka High School, Waimea College, Garin College, Nayland College, Nelson College and Golden Bay High School for supporting this initiative!*

Join us on the journey

We're incredibly grateful for the support of our community over the years — and now, more than ever, there are opportunities to get involved. Whether you're a funder, a local business, a former participant or simply someone who values the outcomes we create, we welcome your support in shaping what comes next.

- Bree Arnott

info@wio.org.nz
www.wio.org.nz



NBS | Community
We believe. We invest.



Tasman Golf Club

128 Cliff Road, Kina Beach

Green fees \$30 (9 holes)

\$40 (18 holes)

Students half price

Golf Carts for Hire (pre-booking essential)

Children under 12 play for free

Come along on a Friday morning and enjoy a social 9 holes with a fun group of both beginners and experienced golfers

Tee off is 9.30 am every Friday

**For more information
Contact Lyndal
at The Tasman Golf Club
Ph 03 526 6819**

Email:

teeup@tasmangolfclub.com
www.tasmangolfclub.com



The Central Shed

- A little local history from Simon Thomas

Tasman's first cooperative apple packing shed, known simply as 'Central Shed' was built by Bill Benzies over 100 years ago, using a loan of £1600. It opened to great aplomb on March 2nd 1917 and was quite a coup for the small settlement of Tasman, as it enabled the newly formed Nelson Cooperative Fruit Company to centralise the processing of around 15,000 cases of apples in its first year alone.



Central Shed under construction, 1917, photo courtesy Hamish Rush

This was almost as much as the whole of the rest of the country combined—thanks to Tasman, Nelson apples were on the map! The Company's chairman, Mr A. P. Allport, presided over the official opening ceremony, saying, 'the formation of the Cooperative Company and the erection of such a practical shed at Tasman was one of the most important events in the history of fruit culture in New Zealand'.



*Central shed Packing staff c.1919-20
From the collection of Bernard Wells, Tasman District Libraries*

In the photograph above, left to right :

Back Row: Fred Goddard, Davy Nichols, Mr Lester, Bill Homer, Mr Banks, Fred E Nottage, Mr Phillips, Reg Hamilton (Ass. Director of Horticulture)

Front Row: Mr and Mrs Slatter, Molly Taylor (Postmistress), Oscar Dicker, Miss Parratt (later Mrs Brash), Ms Biggs, Jessie McKerral (later Mrs Dicker), Gerald Goddard, Miss D. Gadd (later Mrs Fred Bowers of Bowers Hotel), Mr Parratt.

To celebrate the new facility a concert and large social gathering was held in the Shed, attended by many locals who enjoyed 'tasty refreshments supplied by the ladies'. The Nelson Evening Mail reported at the time:

Present owners, the Rush family, are descendants of Fred Nottage, one of Arthur McKee's founding orchard supervisors and co-op packhouse managers.

In 1917, Fred enlisted the assistance of Mr D. H. Rundle, a Canadian from British Columbia. Mr Rundle became General Manager of the Cooperative and was responsible for the construction of the packing shed and cool store in Mapua a year later, further improving the viability of the apple industry here. He was involved with the cooperative until the 1950s when Eric Rush bought out the other shareholders to allow other packhouses to be established.

In the first half of last century 'Central Shed' was also a centre for community events including dances, committee meetings, school concerts and university extension courses. It remained in use by the Rush family as a packing shed until 2018. That's 101 years of service to the Tasman community!

Simon

TASMAN.

The Nelson Cooperative Fruit Company has built a fine packing shed at Tasman, concrete being used for the walls. Fourteen hands were busily employed at the time of the visit, including six packers, with Mr Norgate in charge. Here, too, the fruit is entirely from the young orchards, and of excellent appearance and quality. The company has set up a Price Fruit Sizer, an American grading machine, and the reporter was fortunate in arriving just as the machine was ready to operate. It is a most ingenious machine, which grades the fruit into six sizes. A case of apples is emptied on to the head of the machine, and the fruit is carried along a table on which there are travelling canvasses, the speed of which can be regulated. An attendant stands at each side of the table, and as the apples pass along they are sorted into "special" and "good," and placed on other canvasses. The rejects are put on a third canvas, and drop into bags underneath the table. The special and good apples are carried along to a thrower, worked by powerful springs, and projected into canvas bags. The fruit is thrown from 4 to 14 feet, according to weight, and from the bags the apples fall into bins—special on one side and good on the other, and each class in six sizes. The machine is worked by a one-horse power Dandy petrol engine, and can put through well over 500 cases a day. There is absolutely no bruising—in fact it is claimed that the machine could deal with eggs without breakages.

At both the Marere and Tasman sheds women packers were at work, and were doing good work.

Nelson Evening Mail, 7 April 1917, courtesy of Stuff Ltd



The Central Shed today

Kids' art competition

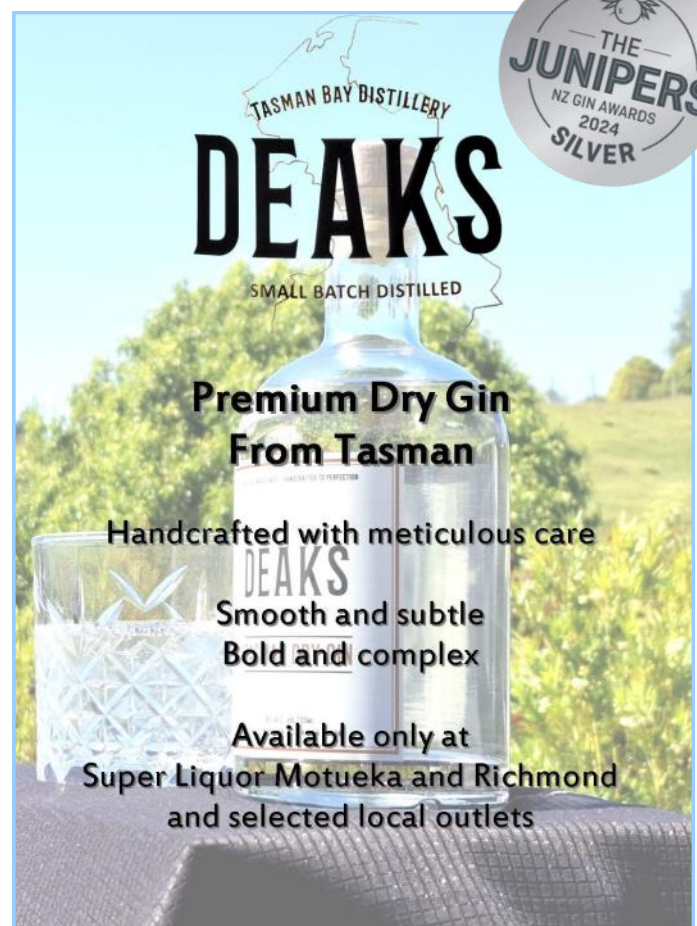
Tasman Mayor Tim King invites young people aged 6 to 15 to take part in a global art competition, as part of the International Mayors for Peace network.

Explore peace through your drawings or paintings and share your vision with the world.

The top artworks will be showcased in a special exhibition in October, with selected entries sent to Japan for a chance to win the prestigious Mayors for Peace President's Award.

Entries close 15 September 2025—don't miss your chance to make your mark for peace!

Scan this link for the online entry form or search the TDC website -



Kia ora koutou

The school year has been flying by, with a wide range of exciting events taking place across all year levels.

Our Year 4 and 5 students started the year with a three-day camp at Bridge Valley in February. This fantastic venue offers a variety of exciting activities, including a rope course, an inflatable obstacle course on the pond, a waterslide, and a hydroslide. Alongside the adventure, students enjoyed valuable time bonding as a class. Year 3 students also visited the camp for a day to familiarise themselves with the site in preparation for next year.



School Triathlon

Students achieved fantastic results in the water during several events: the Moutere Hills Senior Swimming Sports, Moutere Hills Junior Fun Day, and the Motueka District Swimming Sports. Our school triathlon/aquathlon tied in perfectly with all the swimming practice, and some students also participated in the Weet-Bix Tryathlon at Tahunanui in March.



Mountain biking in Hanmer Springs

Our annual Muddy Buddy fundraising event was a huge success, with beautiful weather and an outstanding total of just over \$24,000 raised. These funds are being used to reduce the costs of school camps and day trips, as well as to improve our playground facilities. A huge thank you to everyone who supported this event.

Students have recently taken part in various school and local cross country events. Students who finished close to the top ten in the Moutere Hills Senior Cross Country qualified for the Motueka Schools' District Cross Country to be held at Rabbit Island this term.

In Week 3 of this term, our Year 8 students travelled to Hanmer Springs and Christchurch for their leadership expedition. Highlights included participating in the National Young Leaders Day (NYLD) at the Christchurch Town Hall, harnessed tree climbing, mountain biking, and some fun and relaxation at the Hanmer Springs Thermal Pools.

We are excited about our annual Book Week, which takes place in Week 7. Activities will include a performance by The New Zealand Playhouse of 'The Boy Who Cried Wolf', a Scholastic Book Fair, a book quiz, and our ever-popular Book Character Dress-Up Day.

We also look forward to celebrating Matariki with our school community. Our evening celebration will take place on Wednesday 25th June.

There's still plenty to look forward to, including:

- Winter Sports Tournament – Term 3
- Pet Day and Spring Festival – Term 3
- Year 6–8 Camp at Lake Rotoiti – Term 4
- Moutere Hills Athletics Day – Term 4

I will be finishing my time at Tasman School at the end of Term 2, after twelve years of service, ten of which have been as Principal. I will have fond memories of this school, the students, their families and the school staff.

An appointments process is in place for a new Principal at the time of publishing. I wish Tasman School all the very best for the future.

We currently have spaces available for new in-zone enrolments. If you are interested in visiting the school, please contact the office to schedule a visit.

We will also be advertising out-of-zone spaces for ballot in September.

Rob Boomer
Principal

03 526 6818

office@tasman.school.nz



TACA

The Tasman Area Community Association

TACA was established in 1989 with the purpose of 'Protecting and enhancing the well-being of the residents and the natural resources of the area'.

Members have the best interests of the community at heart and meet on a regular basis to discuss local issues and arrange community events.

The Tasman Times reflects those discussions and events, twice yearly.

Who is TACA?

Greig Caigou	Chair	027 434 7567
David Short	Secretary	021 222 5066
Marijke Caigou	Treasurer	021 236 8119
Steve Richards		022 163 4135
Richard Clement		027 526 6700
Michael Markert		022 389 2240
Hamish Rush		027 406 0133

TACA Meetings

Everyone is welcome to attend.
Meetings are held on the last Thursday of each month, except for December, in the Tasman Church at the bottom of Williams Road in Tasman.

TACA AGM

Thursday 28 August 7.30pm

**Tasman Church
corner of Aporo & Williams Rd**

**Guest Speaker Topic -
Civil Defence Emergency
Preparedness**

**Election of officers to TACA
Committee**

Light supper

Email database

If you would like to join our email database to learn about events and news that are relevant to Tasman/Kina, please simply email

comms@tasmancommunity.org.nz

with your name and 'TACA email database' in the subject line.

From the editor's desk

- Simon Thomas

As always, it's been a pleasure to assemble this issue of Tasman's community newsletter. I only wish it was still in full colour. Funding shortfalls precipitated this change, and though I hope the Times' value is not diminished, I appeal to any benevolent member(s) of the community to help out with a few hundred dollars, twice a year, so we can once again publish in resplendent technicolour throughout. Please contact me in confidence if you could help.



A delightful yet unexpected bonus of recently including local business adverts has been the positive spirit with which those business owners have stepped up. Please use their adverts as a resource when you need your car or caravan fixed, your building site excavated, your home renovated, consented or sold, your garden tidied up or if you need some healing work done on that aching body.

I hope you enjoy this issue of Tasman Times. If you have any ideas for content, or would like to advertise your business, please get in touch with me.

sim.thomasnz@gmail.com

Traditional Chinese Medicine and Acupuncture



Te Ora Integrative Health Centre
ACC ACCREDITED

Andrew Perzigian, MSTCM

022 193 9076

nzacupunctureworks@gmail.com

69 Aranui Road, Mapua

www.acupunctureworks.co.nz

TACA Online

Don't forget that this and earlier editions of Tasman Times, complete with clickable links to emails, websites and to our Facebook page, can always be found on TACA's website page, here -

