



coastal Tasman - experience our unique location

# Tasman Times

July 2018

While we are a small community here in Tasman and Kina, there is lots going on and to keep you informed about.

We would love to have feedback from you in the community about our newsletter and would welcome any comments you might care to offer. Are we covering everything you feel is relevant?

Thanks to TDC for their help with their ongoing production of our community newsletter.

David Short (E: [iamdavidshort@gmail.com](mailto:iamdavidshort@gmail.com), T: 021 222 5066)

## From The Chair

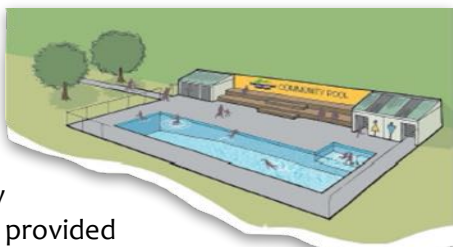
Once again I am away catching up with family in the UK over the northern hemisphere summer and will miss our AGM.



May I first take the opportunity to thank TACA's very able committee who are taking good care of local happenings and in particular, Tony Clark, ably "steering the ship" in my absence.

Since our last newsletter our region has been ravaged by two cyclones, Fehi & Gita, which had a considerable effect on many of us, in particular our neighbours in Ruby Bay & Mapua and those of us who had occasion to travel over Takaka Hill. Increasingly it has shown us that we need to become more resilient on a local basis and strengthen the bonds within our community to ensure we are there when needed for our neighbours, family and friends.

The Tasman Community Pool is making great strides towards being a reality later in the year. One must also take this opportunity to thank Tasman Bay Estates who have provided



two great fundraising events to raise funds for Stages 2 & 3 of the pool with their planting days, such a great win/win partnership.

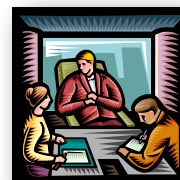
TACA is continuing to build its email database in order to keep our community informed about all the goings-on but can only do so if you send us an email to ask to be included, if you are not already included. This is vital especially with the recent changes to privacy laws affecting all of us.

David Short  
Chairperson

## Admin Stuff from the Secretary

### Annual General Meeting

This year's AGM will be held on Wednesday 25 July commencing at 7.30pm in the Tasman School Hall. The meeting will be addressed by the newly appointed CEO of the Tasman District Council, Janine Dowding.



## TASMAN AREA COMMUNITY ASSOCIATION AGM

7.30pm Wednesday 25 July

Tasman School Hall

Guest speaker: Janine Dowding,  
CEO, Tasman District Council

All residents welcome

Tea and coffee will be served after the meeting

Residents are reminded that it is a requirement that only financial members of the association are permitted to vote.

### Council Ward Representation

The Local Electoral Act 2001 requires that the population that each councillor represents must be within the range of 3544 to 4330 persons. As a result of a change in population in local ward areas and the Moutere /Waimea Ward population sitting at 4500, we were presented with a proposal regarding representational arrangements for the 2019 Local Body Elections. This scenario concerned

altering the boundary of the Motueka Ward to include the Tasman and Kina areas. We rejected this proposal as we felt our 'community of interest' was not with the Motueka Ward but rather the Moutere/Waimea Ward. Tasman District Council has since decided to continue with the status quo.

### **ANZAC Day Service**

As in the past, members of TACA prepared and served the morning tea which was very generously donated by Richard Easton. It was pleasing to see such a large turn-out for the ceremony which was held at the war memorial on Aporo Road.

## **Local Reserves**

### **Tasman Reserve**

The previous edition of Tasman Times reported that funding for the domain reserve had been approved by the Tasman District Council to provide for a picket fence and native plants to separate the domain from the Aporo Road reserve to the north.

The fence has now been completed and bark spread on the road reserve prior to the planting of low natives. Whilst TDC has provided the funds, the Tasman Area Community Association has contributed by providing the labour required.



Recently the underpass interior was cleaned down in preparation for some remediation of the original paint work which had been damaged in a recent act of vandalism by a graffiti 'artist.' Some time went by before contractors were on site and as a result the graffiti had to be overpainted instead of being washed off with a solvent. Thanks to Dulux and Guthrie Bowron in Motueka, who supplied the paint and greatly facilitated the remediation, the touch up was completed.

Should you happen to notice graffiti in this area please advise the secretary as quickly as possible as it is imperative that it is cleaned off in the first instance to avoid the unnecessary job of overpainting.

### **Mill Point site Recovery Project- Kina Beach Road**

Work recommencement on the Mill Point site was somewhat delayed after the summer break by a spate of poor weather and supporting TACA for the Beach clean-up session which clashed with a scheduled working bee – but a worthy project that rightly took priority. When we did get back on site, we were met by a wall of Paspalum grass that had swamped the “car park” area – so dense it was virtually impossible to walk through – let alone push a barrow – so the first task was to cut it down – one which taxed my ageing Whizzer somewhat.

Lush grass and weed growth covered the rest of the site and a big effort was needed to knock the paths and access routes back into shape before we could start the main task of planting the 60 plus TREES that TDC had kindly provided. – yes REAL TREES – Titoki/ Totara/Matai/Miro - of course only our grandchildren will see them at anything like their full height but that's what it's all about in my book.

A second skip load of crushed mussel shells has now been laid on the paths with the sterling help of TACA's Chairperson and is proving very useful not only at suppressing weeds but also guiding us through the increasingly dense growth of earlier years planting. A couple more loads will see the network covered and is scheduled for the Spring.



We meet on the first Saturday of each month – if the weather is clement – from 9.30am to 11.30am with a break for Muffins and Coffee at half time. If you enjoy helping to make a difference to our area and working in good company, come along. You will be most welcome.

*Tony Pearson Working Bee Leader*

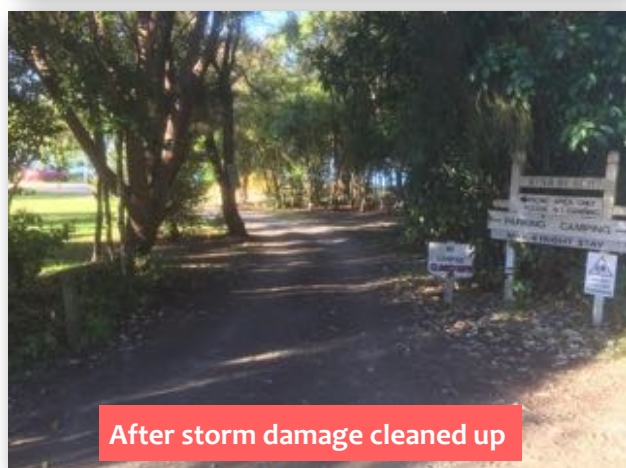


## Kina Beach Reserve

With their location right on the coast the Kina Beach Campsite and adjoining Reserve took a massive hammering in early February when the aftermath of Cyclone Fehi hit our region. The campsite underwent a precautionary evacuation prior to the storm and this was an excellent decision. Pebbles and wood debris were washed well into the Campsite during the storm surge and logs were deposited right across the Reserve. See the photos taken just after the storm and how the land looks now. The Reserve was also almost completely flooded.

The Campsite Manager, supported by campers and the later arrival of Community Service workers, progressively cleared the campground of unwanted debris and this was deposited in piles together with the debris washed onto the Reserve. The piles will soon be set alight when conditions are suitable and Council Contractor personnel are available. Despite the weather issues over the summer the campsite has been very popular and well occupied.

TDC are committed to keeping the Campground occupied year round and now have plans to install a new toilet to better cater for the high occupancy rate.



## Kina Beach Walkway

A storm at the beginning of November washed out some of the path near the blind bend. Tasman District Council have said they will repair the area where the storm surge took some of the rocks and gravel away, but are still unable to confirm when they will get to do this.



There have been higher priority repairs required around the region, but it is believed TDC's workload is lightening and so we hope to see the repairs in the next month or two.

Pippa Tristram

## TACA is on facebook

After starting our facebook page late last year , TACA is slowly building its social media presence.

We've shared a few of the happenings around our area and currently have an increasing number of followers. This year we'll endeavour to post a lot more information on the progress that TACA is making on local issues that affect you as well as local events and happenings in our community.

Help us spread the word by liking our facebook page and sharing our posts. You can find us at [www.facebook.com/Tasmanareacommunityassociation](https://www.facebook.com/Tasmanareacommunityassociation).

## Welcome Packs

Welcome packs containing vouchers, telephone books and local information are now being made available to newcomers to the Tasman area by the rural postal delivery agents for RD1 and RD2. If you are new to the area and haven't received a pack, speak to the rural post driver or call the Secretary, Brian Hanlon on 021 265 3153.



## Jester House News

On 3rd of June 1991 the Richards arrived in Tasman with a convoy of trailers and painted wagons and ventured to follow their dream of creating 'a special place' where people are made to feel "they are someone special". That place is the Jester House Café. With the motto of Funism and the politics of McGillicuddy, the Jester House has forged its way on to the Tasman landscape and now, after 27 years, it's an integral part of it. Everything changes, including the landscape, which now extends to cyberspace. Facebook [www.facebook.com/jesterhousecafe](https://www.facebook.com/jesterhousecafe) and instagram #jesterhouse are now available, so you can keep up-to-date and see what happens and what's new in the Jester House landscape.

One change you will notice is more art and creativity in and around Jester House. This is because Steve has moved out of the kitchen and into a new role at the café. He is now the Imagineer (and maintenance man). Watch out as our part of the cycleway becomes a sculpture trail and for the café garden to become even more of a wonderland.



To be part of the real life landscape is to be part of the community, and that means offering support and encouragement to others in the community. That's why Jester House has teamed with Tasman School to provide opportunities and help with fund raising. Our first collaboration has been the opportunity for year 8 students to experience the day to day running of a rural café.



If our kids want to stay in the country, they have to learn skills to do the work that is available in the country.

Twelve Year 8 students have come for two mornings each. One week they learnt about the

setting up of the café for the day and working in the kitchen, the next week about the background jobs involved in running a café, including feeding the chickens and making things in the workshop.



We are looking forward to our next collaboration with the school, supporting the 'Art Auction' coming up in November at the Frost and Fire Gallery.

Some things don't change, like the fact that Jester House has FREE school holiday activities. For the upcoming July holidays it's "Counting Jesters". Get together, bring the kids and set them to counting how many Jesters they can find inside and outside the café.

After the holidays from 23rd July, the café will be closed for our annual holiday, opening again on 30th August, just in time for Father's Day. You can book online [www.jesterhouse.co.nz](http://www.jesterhouse.co.nz) or leave us a message on 5266742

We wish you all a warm and happy winter, Judy,

Steve and the Team at Jester House.

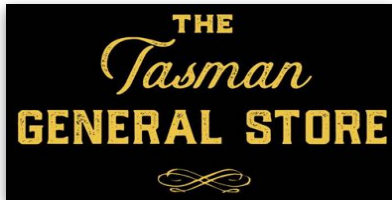
Tel: 03 526 6742

Email: [lunch@jesterhouse.co.nz](mailto:lunch@jesterhouse.co.nz)

Web: [www.jesterhouse.co.nz](http://www.jesterhouse.co.nz)

## The Tasman General Store News

Wow, it is quite amazing how quickly a year flies by, and 1<sup>st</sup> of April came and went but it did mark the one year anniversary for us being in the Store.



Thank you to this wonderful community for its support and patronage over the first year and now with winter upon us again, we have modified the opening hours for June, July and the beginning of August, as below.

Weekday hours: 8am – 5:30pm

Weekend hours: 9am – 5:30pm



It's been an exciting week with the arrival of a new commercial oven, which is already proving to be invaluable.

Cheese scones, sausage rolls and bacon and egg pie all on the go at once, and pies heated to crispiness every time.

We are still cranking out the cinnamon rolls on a Sunday, they will be ready around 10am, due to the later opening, so



there is your excuse for a bit of a sleep-in during the winter months. Our range of sweet treats has extended to include a delectable Louise cake and an old favourite, lolly cake, is proving popular.

It is great to welcome Stevie and Kylie as new staff members into the team. So along with Adele, Kris, Pamela, Mason and myself, it can be a busy little hive of activity during these cold winter days. So pop in and warm up with a coffee and enjoy the yummy goods, or just the smells wafting from the oven – which is often commented on.

As a bit of a personal plug for an amazing product, I cannot recommend the Vitality blackcurrant range of capsules enough. Locally grown blackcurrants and stocked here at the Store. Check out the health benefits on Facebook @vitalitynz or the website [www.vitalityNZ.nz](http://www.vitalityNZ.nz) Or just come in and have a read.

Enjoy the winter and stay healthy and warm, and the odd treat is okay 😊.

Becs and Sonny

[www.facebook.com/tasmangeneralstore](https://www.facebook.com/tasmangeneralstore)



**NBS TASMAN GOLF CLUB (Inc)**

**128 Cliff Road, Kina Beach**

**Ph 03 526 6819**

**Email: [teeup@tasmangolfclub.co.nz](mailto:teeup@tasmangolfclub.co.nz)**

**[www.tasmangolfclub.co.nz](http://www.tasmangolfclub.co.nz)**

Our Concession books are 10 rounds of unlimited daily holes for \$150.

Membership options range from just \$85.  
Children under 12 Free.

If you are unsure about playing golf, come along on a Friday morning and enjoy a social round with a fun group of both beginners and experienced golfers. Tee off 9.30am.

For more information  
contact Claire at the Golf Club.



Our school has continued to grow. We finished last year with a school roll of 117 students. For the first part of this year we have been hovering around 110 students. A number of new entrant students are on our lists to join us before the year is out.

This year we have welcomed Susan Shand (Room 2) to our teaching team. Vairi Hikuroa and Melanie Stinka have also joined us in part-time roles covering release time and days in Room 1, 2 and 3 between them.

The recently formed Motueka Kahui Ako / Community of Learning (CoL) has continued to build its momentum by identifying key focus areas for the schools in the region. The overarching goal is to develop 'mana enhancing relationships'. Research indicates that this is one of the most important factors influencing the success of a student during their academic learning at school. Cognition Education has been selected to support schools in the region through additional Ministry of Education funding. Tasman School has already started the initial stages of this journey and look forward to the learning that will arise to make this community school an even better place for our learners.

The Tasman School Community Swimming Pool isn't our only grounds improvement at present. Outside our new entrant classroom, a play-based outdoor learning space has been planned. The first stage of this had been created with a sand-pit, log bus and rustic table and chairs. Large wooden teepees are on order and these will arrive in July. Longer term plans include a tunnel and mud kitchen.

The school has continued to maintain its involvement in a range of in-school and district wide events that help to ensure our students have a range of rich experiences:



During Term 1 all of our students were part of a 'Top Town' event held on the school grounds. Our current Year 8 students recently travelled to Hanmer Springs and Christchurch for their leadership expedition, which included a session at the Young Leader's Day. Our senior outdoor education camp will be in Wellington this year.



Students have recently been involved in school, local and regional cross country events. Congratulations to the Year 4 - 8 students who participated at the Motueka Schools' District Cross Country. Well done to the Year 8 Boys' team who came 1st in their category and to the Year 6 Girls' team who were placed 2nd in their category. Special mention must go to these students:

- Jerry Rush, 2nd Year 4/5 Boys
- Azmara Lindsay, 6th Year 6 Girls
- Tide Fa'avae, 7th Year 7 Girls
- Lara van Veen, 6th Year 8 Girls
- Zefa Fa'avae, 1st Year 8 Boys
- Lochy Shand, 5th Year 8 Boys
- Sam Johnson, 6th Year 8 Boys

Our students are preparing for the upcoming Matariki celebrations and school hangi on Tuesday 3rd July at the Rush's apple shed.

In Term 3 we will participate in our annual ski trip and more advance skiers will attend the Nelson / Marlborough Primary Schools' Ski Championship.

Disappointingly the biennial 'Rock da House' music performance, usually held in Term 3, has been cancelled due to the lack of funding required to run the event in the region.

Plans are in place for this year's Masked Parade that will occur during Term 4.

It is already proving to be a busy year. By the time you receive our next report, we should have an amazing swimming pool and changing room block open!

## Tasman School Community Pool

The pool project is progressing steadily with around \$270,000 having been raised so far from a variety of sources. There have been some very generous donations (both in money and time) from benefactors within the community and together with some great fundraising efforts, this is enabling the project to keep moving forward. All donations, no matter how big or small are really appreciated as every amount adds up.

Several members of the community helped with preparing the site, digging out the hole and removing the soil - this got the project off to a great start. The pool



has now been lined with concrete, the concrete edging has been poured and the fencing is up. It looks amazing! The next step is to build the changing sheds including toilet and pump shed. Unfortunately the pool can't be plastered until it can be filled - this can't happen until the pump is housed and working so this is a vital next step to make sure the pool is ready for the summer season. Plans have been drawn up for the changing sheds and will be submitted to TDC in the very near future. We just need a bit of a funding push to enable us to start building when the plans are approved.

The first planting day at Tasman Bay Estates was very well supported by Tasman School families and the wider community - it was a lovely sunny day perfect for families to work together to get 1700 plants in the ground. It was a great effort and raised a significant amount for our pool project. We are hopeful that further planting days will be just as fun and successful.



If anyone has any ideas for fundraising or knows anyone we can approach for some funding assistance, we would love to hear from you! Contact the principal, Rob and the Pool Team at Tasman School.

## Vet's Voice

### Traditional Chinese Medicine (TCM) and Your Pet

We at the Vet Centre like to offer our clients and their pets, our patients, the best care we can offer. This approach can be very multi-faceted including the use of complimentary therapies to treat a variety of illnesses, diseases and even behaviour. We have a few different options that we like to use including, but not limited to, Traditional Chinese Medicine or TCM.

### What is Traditional Chinese Medicine (TCM)?

Traditional Chinese Medicine is a system of treatment which includes acupuncture, nutrition, breathing techniques, exercise techniques (Qigong), specialised massage called Tui Na, and TCM herbs. Although acupuncture has been used to treat animals for thousands of years, the use of TCM herbs in veterinary medicine only really started in the last century. In TCM health is viewed as harmony and balance between a person and their environment, and illness is viewed as disharmony. A TCM vet will prescribe herbs based on a system of pattern differentiation. We will conduct an holistic consultation and traditionally, patients are evaluated by applying the four examinations which comprise: Asking (taking a detailed history), Touching, Listening and Smelling, and Looking. Additional information is gathered using Tongue and Pulse diagnosis. Herbal formulae are then prescribed based on the TCM diagnosis, and also which will best help the patient's signs and symptoms. TCM herbal medicine began as an extension of nutrition. A single herb was added to a dish to enhance its effect on the energy of the body. This has evolved to the hundreds of TCM herbal formulae used today. In animals, acupuncture and Chinese herbs work very well together. Acupuncture provides a more immediate benefit and herbs provide longer term home treatment between visits.

### Can TCM herbs be combined with conventional medications?

Herbs can be used safely with most medications, but we advise that you inform the vet of any your pet is taking.

### How long will my pet be on the herbs?

Herbs are gentler than medications, and may take longer to appear to work. Depending upon the condition for which they are prescribed, improvements may take two weeks, or longer. For acute problems a short course is all that may be required. For more chronic conditions, herbs may be prescribed for several months to help the body achieve homeostasis and wellness. Over time the formula may need to change, so regular rechecks with the vet will be required. Sometimes a small



dose of herbs will need to be continued. Herbs may be combined with diet changes, lifestyle adjustments, and acupuncture treatments to enhance their benefits.

### What can TCM herbs be used to treat?

TCM herbs are used in dogs and cats to treat many conditions. These may include, among others: skin conditions such as allergies or infections, gastrointestinal conditions such as vomiting, diarrhoea, inflammatory bowel disease or constipation, kidney disease, cystitis or other bladder problems, urinary incontinence, liver problems, heart problems, respiratory problems eg asthma or bronchitis, painful osteoarthritis, anxiety, hormone imbalances and behavioural problems, geriatric health issues and immune imbalances. TCM herbs are also used as part of a cancer support plan, and can be used with or without chemotherapy.

### Baigent Reserve, Kina Peninsula



Baigents Reserve has suffered some setbacks this past year including the flooding of sea water over summer that has killed a number of the exotic trees in the domain which are now looking rather sad. We have engaged council to create a plan for these trees to be removed this winter, which is yet to be finalised.

The other more recent issue is the destruction of the grass field in the centre of the reserve one month ago. This act of vandalism and who was

responsible for it is unresolved. While we can all understand that this is something that we may all have been capable of at some point in

our misspent youth, it does not undo the damage done or remove the feelings of disappointment and disrespect. Anyone who knows anything of this or who was responsible can contact any of the committee members at TACA in confidence.

The date of this year's working bee to held in August is yet to be set and will be communicated soon. If you wish to be part of the group, please contact either David Easton or Hamish Rush. Cheers, Hamish



### The Big Beach Clean-ups 2018



In early April a hardy group of volunteers from our local community set out on a task to carry on the work initially co-ordinated by the Dept. of Conservation several years ago to clean up firstly the coastline from McKee Reserve to the end of Kina Peninsula and around to Moutere Inlet to Tasman Village.

In May many of the same people came out again to help clean up both sides of the Coastal Highway along the Mariri causeway and around the various loops. Thanks must also go out to Milnes Beatson staff and students & staff from the Rudolph Steiner School who also participated. Thanks too to TDC & Nelmec staff for providing expertise and materials to complete the job.



It is anticipated that the Big Beach Clean-up will become an annual event with various groups co-ordinating their efforts around the Tasman Bay coastline and the edges of the Waimea Estuary and Moutere Inlet.



**The  
Vet  
Centre**

Mapua Clinic 5402329  
Motueka Clinic 5288459  
Richmond Clinic 5445566

[www.vetcentre.net.nz](http://www.vetcentre.net.nz)

*"Personal Care for All Animals"*

NZVA Best Practice Accredited  
(Tasman's only accredited Practice)



## Tasman Bible Church – June 2018

### Home is...?

This is where you finish the sentence off with, '... where the heart is', or '... where you lay your hat', or a variation, 'There's no place like home'.

There is nothing wrong with the above clichés – some clichés should be maintained as nuggets of truth that apply across the generations. The subject of home will of course arouse our deepest affections and intentions and mostly for the good, I hope – quite right. It also forces us to consider our origins and destination in an ultimate sense.

The most common of greetings to one's neighbour in certain cultures and often in more rural than city contexts is, 'where are you from?' It is more important and decisive than 'how do you do?' or 'what do you do?' That is because the question of what or where home is goes right to the heart of our identity. Geography too, gives way to proper belonging.

As one of those migrants to New Zealand, my wife and I now contemplate the prospect of going home back to the UK. It was where we were born - we return to an inevitably changed place and yet, to kin that were twelve thousand miles away.

For Christians, identity and belonging take place within the concrete sphere of here in the domain of the earth and yet, there is a longing and aspiration for home elsewhere. Christians would say that is because they now belong to God in Christ. Their home is not so much even a place they call heaven – although they believe that will be their ultimate and real destination. They do not despise here but they know there will fulfil here in a far better way. As pilgrims, they are on the way home. That is why the Apostle Paul wrote of Christians,

*"But our citizenship is in heaven. And we eagerly await a Saviour from there, the Lord Jesus Christ."*

For Christians, their identity and ultimate sense of belonging is wedded to a Person. Where or Who is your home - ultimately?

- Richard Drury

Check out [www.tasmanbiblechurch.org.nz](http://www.tasmanbiblechurch.org.nz)

## Congo Solar Round Three!

We arrived back in the DR Congo on May 2<sup>nd</sup>. Thankfully we acclimatised quickly and now, like every other Congolese, we use blankets on our bed when



it's 20°C. We've been here for six weeks and are presently out west by the Congolese/Angolan border.

In these six weeks, Geoff has run a training seminar, designed solar power systems for a hospital and mission as well as getting an X-ray machine functioning. The X-ray machine arrived from South Africa a few weeks before we did—a very generous donation from an Irish neurosurgeon who has lived and worked in the DRC. Geoff and Dr. Serge spent a morning dialoguing with technicians in South Africa. When the machine was functioning, I don't think I have seen a wider smile than Serge's. I believe a pen



Part of the Tasman  
Community for over 50 years



3rd Friday monthly, 10:30am      Wednesdays @ 10am


— Church Service on Sundays @ 10:00 —

## Tasman Bay Christian School

- Are you looking for a warm, caring, learning environment for your child?
- Is it important to you that your child be taught and encouraged in Christian principles and values?
- Would you like your child to be involved in a stimulating classroom programme?
- Would a free bus service to and from school make your life easier?

**If so... call Tasman Bay Christian School**  
ph: 03 5266855 or email: [office@tasbaychristian.school.nz](mailto:office@tasbaychristian.school.nz)

**Principal: Steve Matthews**  
[www.tasbaychristian.school.nz](http://www.tasbaychristian.school.nz)



and computer adaptor were x-rayed and all is well. Now Mission Garenganze will get some people trained to administer the X-ray unit for the benefit of all. This machine is top of the line and doesn't require the old plates most of us are familiar with.



We still have 6 weeks left before we return home. The plan is to travel northwards to Kamina and Malembe. There are more seminars to be run plus Geoff needs to check on the solar power system he put in Mulongo last year. I will be following up on research about paediatric cerebral malaria.

We are doing well and look forward to our return home.

**Geoff and CarolAnne Paynter (DR Congo)**

## Join TACA's email database

We would like you to join our email database to keep you informed of all of the events and information that is relevant to our Tasman/Kina community.

All you have to do is to send an email to the editor, [iamdavidshort@gmail.com](mailto:iamdavidshort@gmail.com) with your name.

Note that you can easily unsubscribe at any time by emailing the editor.

## Tasman Area Community Association

Support your Association to continue their work. TACA was set up in 1989 with the purpose of "Protecting and enhancing the well-being of the residents and the natural resources of this area".

These people have the best interests of the community at heart and meet on a regular basis to discuss local issues & arrange community events.

Everyone is welcome to attend any meeting.

## The "Who's Who" in 2018 at TACA

David Short	Chairperson	526 6877
Tony Clark	Acting Chair	526 6171
Brian Hanlon	Secretary	03 970 0565
Greg Dryden	Treasurer	526 6151
Hamish Rush		526 6125
Steve Richards		526 6742
Roger Percivall		526 6230
Paula Short		526 6789
Pippa Tristram		526 6109
Richard Clement		526 6707

## Next TACA meeting:

**Annual General Meeting**  
**Tasman School Hall**  
**Wednesday 25 July @ 7.30pm**

## Membership 2018/19

The association is a voluntary group, which relies on annual membership subscriptions, sponsorship and grant applications to carry out the work they do.

Membership is \$5.00 per family or \$2.00 an individual. To join please complete the section below and post it to Greg Dryden, 14c Kina Beach Rd, Tasman 7173 or drop it with your donation to the Tasman Store or by internet banking. Subs for 2018/19 are now due.

Name.....

Address.....

Phone.....

Email.....

Amount enclosed \$.....

Receipt needed (circle) Yes No

For direct credit online, please pay to Tasman Area Community Assoc., Westpac, Motueka Branch Account No. **03 0693 0141622 00** & include your name and initials as per the sample bank statement box below.

Statement Details	
Details to appear on your statement <sup>2</sup> These fields help you identify what the payment is for	
Particulars	<input type="text"/>
Code	TACA
Reference	Annual Sub
Details to appear on recipient's statement <sup>2</sup>	
Particulars	Your Name
Code	TACA
Reference	Annual Sub