



coastal Tasman - experience our unique location

Tasman Times

December 2022

Welcome to our summer newsletter, updating you on all of the local issues and happenings.

Thanks to Tasman District Council for their help in the production of our community newsletter.

Editor: David Short, comms@tasmancommunity.org.nz



From The Chair

As COP27 in Egypt draws to a close, it seems that world leaders have managed to reach some agreements on climate change while in Nelson/Tasman we continue to be significantly devastated by its effects. On a more local basis Stafford Drive is still closed some 3½ months after the August floods with Council having just made its decision to re-open the road as we go to print. **See p.14 for the full Media Release.** There is no doubt that this event has had significant effects on residents and businesses in Tasman, Ruby Bay and Māpua.



Despite this unfortunate event we have some very positive news to report in this issue. Our ambitious Te Mamaku Drive revegetation project is going ahead in leaps and bounds on SH60 (p.13). Now that our current blocks are cleared, we are ready to prepare the ground for planting next winter and are now looking for new grants to apply for as well as donations from individuals and businesses. Remember our Givealittle site, <https://tinyurl.com/39bebsek> is still open for donations, so come on Tasman & Kina and contribute to our great project to increase the biodiversity of your area and to create a wonderful native bird corridor between our two estuaries.

So far we have just 10 people on our volunteer list for this project and will need 2-3 times that number in May/June next year to help with plant maintenance & installing plant guards and stakes, so please register your interest with Michael Markert at michamarkertnz@gmail.com.

One of the main outcomes from the very successful community engagement at our July AGM was the desire to hold more community events and so to that

end there is Tasman Church's **Christmas in the Tasman Domain on 11 December** (p.9). We are also delighted to announce our inaugural **BIG FAMILY PICNIC in LEH Baigent Reserve on 25 February** (p.12), a delightful family event to mark in your diary.

TACA is also looking into enlarging the walkway and cycleway network in our area and are in the very early stages of investigating the feasibility of building a bridge over Tasman Stream to connect the Mill Point site with Aporo Rd opposite Tasman School. If workable it will create a shortcut for kids walking to school from Kina and a lovely loop walking track for Tasman Village residents.

Allow me finally to personally thank our fantastic new TACA committee for your enthusiasm and ongoing commitment to our community, to welcome our existing and new Ward councillors and lastly take this opportunity to wish all of you a happy and relaxing festive season.

Ngā mihi
David Short,
Chair

Call to action: For those of you that do not yet receive our community emails and would like to, please email comms@tasmancommunity.org.nz.

Admin Stuff from the Secretary

I have reported in the past regarding meetings for TACA and how we have been well supported by local residents, volunteers and Councillors. We have been pleased to see fresh faces from the community coming along to join the monthly committee meetings. Everyone is welcome at these meetings which occur on the last Thursday of each month, upstairs at the Tasman Church. The recent good attendance is largely due to the community engagement process initiated at the AGM in July with findings reported back at a subsequent meeting, with discussions and matters arising carried through to ensure the suggestions made gain some traction for the betterment of this community.



A look at some items on the standing agenda gives an indication of the scope of these activities TACA is involved with:

Reports:

- Baigent/Kina Reserves (what's happening, monitoring, concerns, projects)
- Tasman Domain (enhancements, maintenance of pump track/community orchard)
- Walking/Cycling (planning, future strategy, new opportunities)
- Te Mamaku Drive (plantings and increasing biodiversity along the highway corridor)

Finance: Statement of accounts (managing monies such as grants for projects)

Councillors: Keeping open two-way communication around matters affecting Tasman and wider considerations.

Other items include Civil Defence matters, community events and our relationship to the Māpua & Districts Community Association and also allows for some sharing of information, especially where there are potential synergies or where both areas are jointly affected by events and consequent decisions.

This month is our final meeting for the year. See you Thursday 26 January 7.30pm at Tasman Church.

Greig Caigou
Secretary, TACA

Local Reserves

Tasman Domain

It has been a relatively quiet time in the Tasman Domain in the last 6 months, except for a planting morning at the beginning of October. A dedicated group planted approximately 100 natives, mostly manuka and kanuka in the top corner of the Domain by Field Creek. This planting joins the existing planting on the Domain Spinney with the new stream edge planting on the Rush's Orchard.

These planting don't happen without kind and generous input from various individuals and organisations. So thanks to Hamish Rush for spraying the area prior to planting; it made the job much easier and thanks to The Nursery for the serious discount on the trees. Jo and Lou have a wonderful selection of healthy natives and they are our local nursery. Also thanks to Elliot Easton from the Mouhere Catchment Group for the tree guards and stakes. Last but certainly not least, thanks to the volunteers who turned out on a Saturday



morning to get the trees in the ground. It is always very satisfying to look back after a couple of hours toiling with a spade and see the plants safely in the ground and think: this is going to be a forest soon and we did it.

Otherwise there has only been some mulching and general maintenance across the rest of the domain. The Pump Track continues to get regular use and the Open Orchard all has fruit on it. Keep your eyes on them and help yourselves when they are ripe.

There is still a desire to write a long term management plan for the Tasman Domain to ensure we make the best use of our fabulous facility, to enable events like the Christmas in the Domain to have space but also to reduce maintenance and make the most of carbon sequestration possibilities. If anyone is keen to be a part of this planning please contact Steve Richards at jesterhousesteve@gmail.com or any of the other TACA committee members.

Kina Beach Reserve & Campsite

The continued lack of overseas visitors has meant campground usage has again generally been less than pre-pandemic numbers. More recently there has been a further reduction due to the closure of the Ruby Coast route with Māpua caused by the enormous slips at the McKee Bluffs. The closure of the McKee campground and recreational area has also contributed to fewer travellers visiting the Tasman/Kina coastline, so Kina campground has been unusually quiet, even during the fine weather over Labour Day weekend.

A continued lack of anti-social incidents at the reserve is however welcome news. There hopefully won't be too many problems over the busier next few months.

The extremely wet winter seemingly led to a profusion of rats and some stoats "invading" the campground. The problem was such that TDC used poisoned bait initially to try to control numbers, but this is not an ideal long term control method. So

when Jenny the caretaker commented on the rat problem to TACA an approach was made to Kina Bird Song to see if they could help. There was an immediate positive response and within a couple of days David Easton arrived at the campground to set up 10 rat and stoat traps donated by Kina Bird Song. He also provided training to both manage the traps and record kills with the Trap NZ app. David later also installed a couple of Possum traps.

At the time of writing 4 rats have been killed in the first few weeks since the traps were set. It appears that the poisoning was very successful so the campground can now rely on the traps to keep rats at bay. TACA wish to thank Kina Bird Song and David Easton for their ongoing efforts to ultimately make Tasman and its surrounds predator free.

Mill Point Site Recovery Project Kina Beach Road

Well, we have been “open to the public” for some 4 months and there have been no serious “infringements” although a bit more responsibility from dog walkers stopping their hounds fouling the paths would be helpful. In the next few months Freedom Campers will be our biggest concern.



Recent working bee efforts – when not frustrated by the weather - have mainly been on maintenance work, keeping paths free from the vigorous plant growth, freeing up plants already in the ground and dealing with the occasional gorse or broom that betrays itself by flowering above the rest of the Manuka bush. We have managed to get in some 20+ Totaras grown from seedlings and a similar number of Cabbage trees into the “swamp” areas that seem to drown anything else we try and plant there.

Trap maintenance continues although with virtually no catches – I never know whether to take this as a good sign of no pests or a bad one of poor trapping technique!

Existing pathways have been topped up with mussel shells and a new one to “Totara Grove” started.

We will have one more session early December then take a summer break for a couple of months so feel free to enjoy the facilities and use the picnic tables over the summer holidays before we get back to our coffee and muffins on them in March.

Incidentally if you have any ideas of how we might utilise the site for local kids’ activities – Easter Egg hunts, group picnics etc etc, do let me know. We would be happy to muck in and help.

And the future?? – I hear a rumour that TACA might be seeking funding and “effort” to build a bridge across the Tasman stream from the site to the Aporo Road side for the kids from the Kina area to use as a short cut walking or biking to school – bring it on TACA!

Take care and have a good summer break.

Tony Pearson - Working Bee Leader.
Email: tonypearson@xtra.co.nz



WILLING WHEELS

NEED A LIFT?

Volunteer Drivers Transport Service

- reliable & affordable transport for Māpua & Districts residents
- in & around Māpua, Motueka, Richmond, Nelson (no airport runs)
- business, medical appointments, activities, shopping
- ride home from sports' practices or after-school activities

Costs: Example - Māpua to Richmond return approx. \$35
Drivers: Team of locals all police vetted & ready to go

If you experiencing financial difficulties in accessing our services, please contact Citizens Advice/WINZ for advice

TO BOOK A RIDE CONTACT KAMAL - 022 6822 373
24 HOURS NOTICE PLS - office.ntctt@gmail.com

TRUSTEES WANTED – marketing.ntctt@gmail.com

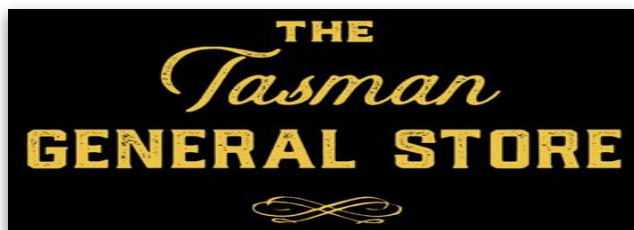
Provided in partnership by:

Nelson Tasman Community Transport Trust & Māpua & Districts Community Association, funded by the Rata Foundation & Lotteries Commission



Please dispose of this flyer appropriately





We are looking forward to a busy summer here at The Tasman Store. We have a fantastic team on board, the garden is done, the cabinets are full and the ice cream machine is already humming. We have already noticed a real increase in the number of cyclists and other holiday makers in the area and are enjoying hosting them as well as the many local groups who visit regularly.

A reminder of our summer opening hours.

Weekday hours: 7.30am – 5pm
Saturday only: 9am – 4pm
Sunday Closed

Remember we are always closed for public holidays.

Louie's ever growing range of gluten free food, including his gluten free vegan chilli bean pie, is gaining an ever increasing following and his gluten free carrot cake is flying out the door. A variety of salads will be offered too over the summer. Then there's always a great selection of yummy slices in the cabinet, as well as the great local pies and store-made sausage rolls.



Lance continues to roast his award-winning beans & ground coffee. Remember that both coffee beans and plunger coffee are available in 200gm, 500gm and 1 kg bags. They are also available at your local supermarket.

Oaklands milk is still delivered Tuesday, Thursday and Saturday, normally by mid morning.

Thank you to all our loyal customers for their amazing support. We feel very lucky to be part of such a supportive and awesome community. Have an amazing summer. We look forward to seeing you at the Store.

Lance Draper

www.facebook.com/thegrindcoffeeroasters



THE TASMAN GOLF CLUB

128 Cliff Road, Kina Beach

Ph 03 526 6819

Email: teeup@tasmangolfclub.com

www.tasmangolfclub.com

Green fees \$30 for 9 or 18 holes
 Or our Concession Books offer 10 rounds of unlimited daily golf for just \$250.

Membership options range from just \$90.
 Children under 12 play for free.

If you're unsure about golf, come along on a Friday morning and enjoy a social 9 holes with a fun group of both beginners and experienced golfers.
 Tee off is 9.30am, every Friday.

For more information
 Contact Lyndal at The Tasman Golf Club



SERVICING

*Motueka – Tasman – Māpua
 – Richmond Shops (Sundial Square) & Pool*

TUES / THURS / SAT – RTN FARE \$10
 Mini-bus departs Motueka i-SITE 9.30am
 Return departs Richmond Pool 1pm

For more details visit our website www.ntctt.org.nz
 or email office.ntctt@gmail.com

BOOKING ESSENTIAL

To book call Motueka i-SITE 03 528 6543
 (12 hours notice required)

TRUSTEES WANTED – APPLY NOW VIA NTCTT WEBSITE!



Please dispose of this
 flyer appropriately



COMMUNITY
 TRANSPORT TRUST
 KINLAID TASMANS

Jester House News

There's a saying 'the only constant in life is change' and so it is at Jester House.

Thankfully we are now in a position to be a nimble business and move with the changes. The big change in the last months was Dean leaving for a job that was more appropriate for him which means we are no longer doing dinners. We were very sad to see him go, as his attitude and professionalism were second to none. The last two and a half years working with Dean have been some of the most enjoyable of my career as a chef. The good news is that we're hoping that he will come and do some pop-up dinners next year. To find out when, get yourself on to our email list by emailing judy@jesterhouse.co.nz. You'll get the lowdown on weekly specials and special events, like dinners with Dean, a world class experience right here in Tasman.

With change comes opportunity and we have taken this opportunity to make the most of our fabulous sunny terrace by opening later on a Friday evening for your end of week pleasure. So for the next few months the Jester House Café will be open until 7pm with plenty of cold beer, local Tasman wines and a tasty selection of snacks. We're also planning to have a musician some evenings. Once again get on the email list to find out when.

Judy and I have been spending a lot of time in the garden lately, as we put our garden in the Motueka Toy Library garden trail. It's been a great opportunity to get some projects finished, like the rose walk. We demolished the old wooden arcade during lockdown in 2020 and it has taken two years to get the new one finished. Special thanks go to George Baxter Bespoke for fabricating the steel arches. I can't recommend George highly enough for his can-do attitude and workmanship. Now with the warm and wet spring we've had, the roses and everything else are growing wonderfully and are a delight to the senses.



Christmas is just around the corner and it's not too late to order your Christmas cake from



Jester House. We make traditional full of fruit, 1.5 kg round cakes at \$58.00 or smaller Christmas Tree cakes at \$18.00. The trees make great gifts. We are also able to make the cakes gluten free. Last orders must be in by 10 December for pick up on or before 23 December. Phone us on 03 526 6742 or even better, email judy@jesterhouse.co.nz.

Which brings us to Christmas and the Café summer hours. We will be OPEN every Friday until the 23rd of December from 10am until 7pm. Then we are closed for our summer break, reopening on 03 February 2023, again from 10am until 7pm to make the most of the balmy summer evenings we're going to be enjoying.

All the best for your Christmas and New Year; I hope you get everything you wish for.

Ngā mihi nui,

Steve, Judy, Lou, Rose, Rachel, Nat and Sophie

RUBY COAST NEWCOMERS SOCIAL GROUP

WHAT IS IT? Easy way for Tasman and Mapua Newcomers to socialise, make friends and learn about the area from other "recent" residents.

WHERE? Tasman Store, occasionally elsewhere.

WHEN? The last Friday of each month from 10am until about 12. An email reminder is sent each month. No obligation to attend! Just come along as often as suits you.

Also occasional ad hoc "bring-a-plate" social events.

CONTACTS:

VIVIEN on 03 526 6707 / 027 526 6707

vpeters@xtra.co.nz

or

RICHARD on 027 526 6700

rscllement@xtra.co.nz

Moutere catchment group update



Plant requests for 2023 are now open!

The Moutere catchment group is now four years old. We started with an idea from one landowner who then gathered 10 landowners, swelling to 100 by our first official meeting, and now over 200 landowners are working together to plant, restore and protect the Moutere Catchment.

Landowner engagement has been driving the success of this project. With the help of Tasman Environmental Trust (TET), Tasman District Council and NZ Landcare Trust.

The catchment group secured funding from Te Uru Rakau (One Billion Trees) to plant 270,000 plants over 3 years. We are thrilled to announce that at the end of the 2022 winter, 270,000 plants have been funded and planted in the catchment. Because of the huge contribution of Moutere landowners in the areas of site, prep, planting, and maintenance we have enough project funds to plant an additional 80,000 in 2023, our final year of Te Uru Rakau funding.

A total of 350,000 funded plants for the Moutere Catchment - what a great achievement - thank you to all involved!

For more information and to request plants for 2023 follow the survey links opposite.



<https://www.surveymonkey.com/r/Moutere23>

Any queries please contact Elliot Easton – ellioteaston@tet.org.nz

2022 Planting Report

2022 was a challenging but ultimately successful planting year, with excellent community engagement and enthusiasm for planting. We have recorded 126 Moutere Catchment landowners planting 165,110 native plants in 2022, many of these in and around the Tasman area. A wet winter created a challenging and disrupted planting season, followed by a dry

start to the Spring / Summer period, a cause for some concern. Plantings that receive a higher level of care, maintenance and reduced competition for precious water will have a higher chance to survive and thrive during this dry period.

A special mention to the 8 local nurseries who were able to grow this huge number of plants, and Appleton's Tree Nursery for donating 4500 Kahikatea to the Moutere Catchment Group. We now have 4 community nurseries up and running, three of these provided plants that were planted in 2022.

Two highlights from the 2022 planting season include the starting of the Te Mamaku re-vegetation project and engaging with all landowners on the waterway connecting one of our most significant wetlands (Machine Gully) with the Moutere Inlet.

Do you see restoration corridors starting to form in your part of the catchment?



Figure 1 November 22 workshop focused on "Getting your plantings to thrive" Aporo Road, Tasman plantings.

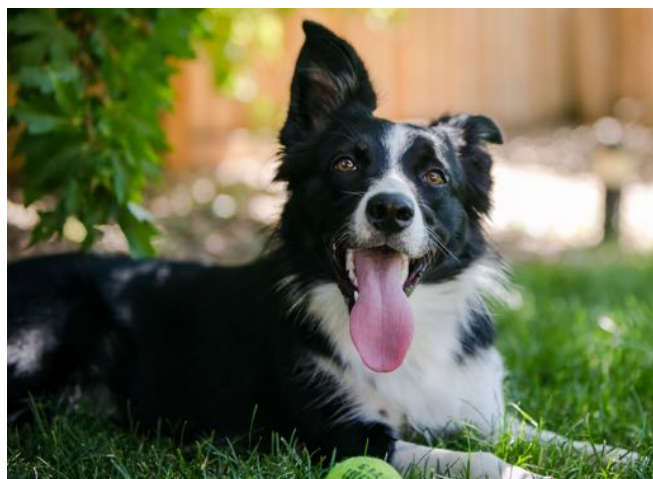
Vet's Voice

Heat Stroke in Dogs

With summer on the way and temperatures on the increase, it's important to consider the effects on our four-legged friends. Heat stroke or hyperthermia is a stressful and potentially life threatening complication from high



temperatures. Signs of heat stroke include rapid respiration rate/panting, lethargy, wobbliness and in extreme cases, seizures. It most commonly occurs when dogs are left inside cars on a hot day, where, with inadequate ventilation, the temperature can spike rapidly within a matter of minutes. Pets can also be at risk when taking part in high energy activities such as ball games and long runs in the heat of the day. Dogs are unable to sweat, so their primary method of heat reduction is panting. As such, extra care must be taken with brachiocephalic (short-nosed) breeds and dogs that are muzzled to make sure the muzzle allows room for the dog to pant with its mouth wide open.



Working dogs also need to be monitored carefully when working in the summer heat. Try keeping working dogs wet down, provide regular access to fresh water and make sure resting spaces are cool.

Kennels should be in a shaded spot, especially if metallic, and dogs should not be left tied to the back of a ute in full sun.

If you suspect your dog has heat stroke, drape them in cool wet towels or pour cool (not ice cold) water over the body, and ring your vet. Prognosis is fair to good depending on the length of time the animal has been hyperthermic for and to what extent.

Dogs that have experienced heat stroke in the past may be at additional risk in future as their thermoregulation centre has been damaged. So let's keep our pets cool and comfortable this summer!



The Vet Centre

Richmond Clinic: 03 5445566
79 Gladstone Road
info@vetcentrerichmond.co.nz

Motueka Clinic: 03 5288459
400 D High Street
info@vetcentre.net.nz

Mapua Clinic: 03 5402329
69 Aranui Road
info@vetcentre.net.nz

Civil Defence Volunteers Tasman/ Kina



Nelson/Tasman Civil Defence has been very busy after the recent weather events. This may also impress upon our community the necessity to have a "Get Through" pack on hand to last 3 days.

We would also like to repeat our request for volunteers, as we did in the last Tasman Times.

Thank you to those who came forward; we also would like owners of 4 x 4 vehicles who would be willing to assist if a situation arises.

If you would like to help, even in a small way, then please contact the local Civil Defence Situation Officer: Roger Percivall, tasmangreen14@gmail.com



Tasman Bay Christian School

Enrolling now for 2023



We would love your whānau to join us

A beautiful rural setting with plenty of room to play.

Highly supported and resourced classes with experienced teachers and support staff.

We provide education that cultivates curiosity, creativity and nurturing faith in Jesus.

Bus service available extending from Richmond to Riwaka.

6 Williams Road, Tasman
www.tasbaychristian.school.nz
office@tasbaychristian.school.nz
03 526 6855



We acknowledge it has been another turbulent year for our community. From flooding to pandemics and everything in between. Throughout these ebbs and flows we are proud to say that we have worked with around 6,000 participants this year on approximately 240 programmes.

The focus of our programmes remains on uplifting our youth to be more confident, resilient, and able to deal with a changing world, connected to nature and their community. We are incredibly grateful to the ongoing support of our team, funders and community who enable these programmes to happen. Ngā mihi maioha!!

Matua Mike Elkington recipient of Supreme Award

Many of you who have been to Whenua Iti will know Matua Mike. We were over the moon to hear that the kaiārahi (leader) of our kaupapa Māori programmes, Matua Mike, is the 2022 recipient of Recreation Aotearoa's Te Tohu Manu Kura Supreme Outdoor Award for his outstanding mana and leadership in outdoor recreation.

Matua Mike has worked for Whenua Iti since 2014 and his passion lies in uplifting the mana of tamariki and rangatahi to embrace te ao Māori and supporting rangatahi Māori to see that they can aspire and achieve their aspirations. Ka mau te wehi, Matua! We have known for a long time what a taonga Matua is to our rangatahi, it's so wonderful to see his recognition. Ka nui te maioha me aroha mō tō mahi miharo.

Community Nursery Extension

We are grateful to funding from Weave and TDC that has allowed us to extend our on-site community nursery. We have run a couple of community 'potting-up' sessions resulting in 3,500 baby natives being pricked out to head into the Moutere Catchment next year as part of a project to improve biodiversity and stream health of our beautiful region. Thanks to everyone who has been along to support this kaupapa.

Don't forget that we also have a community trapline available to open for community & educational groups to learn how different traps work,

supporting biodiversity action in our region. Contact us to find out more.



Students on the Kaitiaki Leadership Programme had success on their trapping line

Summer Holiday Programmes

We have a number of programmes running this summer for ages 7-16yrs to provide fun adventures in the outdoors for tamariki. Programmes are filling up, so head online to enrol soon via our website.



Thanks to Foodstuffs Community Trust for new kayaks – just in time for summer!

Noho ora mai rā,

Thanks to everyone for their continued support & we look forward to seeing you out there!

info@wio.org.nz | www.wio.org.nz

Experiential Learning Inspiring Positive Change



The Nature of Trees

TACA have been planting trees over the cooler months . . . so has everyone else it seems. Wholesalers and nurseries had been flat out and some quick growing native species bolted out their door so fast that supplies were being sourced from faraway places.



I love planting trees . . . it is good for the soul. An old adage says: “The best time to plant a tree is twenty years ago and the second-best time is now!”



There have been some difficult moments for my plantings. When you’ve got a large site, there is plenty of scope to craft the countryside, but decisions have to be made about what species work best and how much initial preparation is required for a good result, or whether to leave other nursery species around about.

And all this comes before the actual digging, which even in rain-softened clay doesn’t always yield a goodly hole without some effort.

When I planted trees at my space, I’d go happily about these tasks for the anticipated reward of beautification, and colour, and summer shade, and the fullness of fruit in season from the various orchard species.

Planted correctly I’m confident that the trees will do what they know to do. It is in their nature to grow, to produce leaves, to bear flowers and fruit, depending on their kind. Of course all that is required for this to happen is the right conditions so that the roots go down deep and find ample nutrients of the right kind. It helps also to stake or protect the trees so they get off to a good start, standing up to the westerlies that hammer this area of Tasman from now through until mid-summer.

Some plants might topple, or dry out over a scorching Summer, or even get diseased if they don’t get what they need.

I’m sure you can appreciate all the metaphors for us that are inherent in this planting process and the life of trees.

We need to have our roots down deep into the ‘good stuff’ if we are to develop as we should. To live and grow upright we also need a firmly fixed standard. And just as a tree knows how to produce good fruit, we have in us the potential to yield an abundant life . . . being fruitful to others.

These are natural principles, and I’d say already ‘built-in’ by our designer God.

So at this Christmas time I’d encourage you to feed on the nutrients supplied by this Creator Himself. For example, study His Bible, learn of His ways . . . but can I remind you also that Christmas is a time we celebrate the coming of Jesus and the true-life narrative of this human being who was called Emmanuel – God With Us. So, focus your life on Him.

“Jesus will make his home in your hearts, as you trust in Him. Your roots will grow down into God’s love and keep you strong.”

His coming is a profound event and had a profound purpose that has shaped history and individual lives, continuing to this very day. So, who do you say Jesus is?

You will produce the glorious blossom of a life well lived - according to His intent - bringing much joy to God, and to those others who are around you.

May God bless you and your families.

We look forward to serving you with our community event – **“Christmas in the Domain”**. Come along and enjoy!



Activ8 Adventure Club

Activ8 Adventure Club is an after school adventure club for local tamariki (7-11years) .

This second half of the year has been focusing on building outdoor skills in our adventurers, including navigation, camp cooking, building bivouacs and looking after our environment. These skills are preparing us for our end of term tramp and overnight stay in the Kahurangi National Park.



A highlight over the last term has been our social evenings where extended whanau get together for kai and games. A great way for the families to relax, have some fun together and to get to know other local parents.

Anybody interested in finding more about Activ8 can email Sarah at activ8adventureclub@gmail.com.

We'd like to say a big thank you to the Tasman community for your continued support.



Spring has sprung and the birds are laying. Nests, eggs and young are everywhere. The Tui are crazy and bird song abounds.

The benefits of good predator control are well documented and so many of you are contributing. Not just by trapping, but many of you are planting natives and bird friendly trees that add to our biodiversity. Without good habitat we cannot produce the insects, fruit and flowers that all our native birds so desire.

Well almost all. There are the shore and sea birds we have nesting locally that need protecting not just from the predators we trap, but from humans, dogs and cats. This is the time of the year when the Korora (little blue penguins) come to shore to raise their young. The Torea (variable oyster catcher) and Pohowera (the banded dotterel) nest, lay eggs on the sand and gravels of our local beaches. They are hard to spot and don't like to be disturbed. These nesting birds and young are easily spooked and killed by people (some in 4WD), dogs not under direct control and cats.

Dogs should be under effective control at all times in accordance with the Tasman District Council Dog Control Bylaw 2014.

It is a serious offence for dogs to harass protected wildlife with penalties including imprisonment for the owner and fines of up to \$20,000 if wildlife is killed.

With young Korora totally dependent on two parents operating together to feed them, uncontrolled dogs can be devastating. As you can see from this photo below taken on the Kina coast, eggs of Torea are hard to spot. So easy for a big footed mammal to destroy.



Would you see the eggs above when you were walking? Banded Dotterel eggs are significantly smaller and better camouflaged.

So please take care. If you see an uncontrolled dog on our coasts and in our bush, please ask the owner to take care.

As always if you wish to help, or wish to have traps on your property for predator control please make contact. We have live capture traps for loan that are suitable for cats, hares and possums. As well as rat, stoat and possum traps.

- Tim Lole, Jackett Island, tim@timlole.nz
021 031 4257
- Linda Thurow, Kina Peninsula, lthurow@hotmail.com
022 128 9002
- David Easton, Mariri david@eastonapples.co.nz
021 314 902 **Project Coordinator**



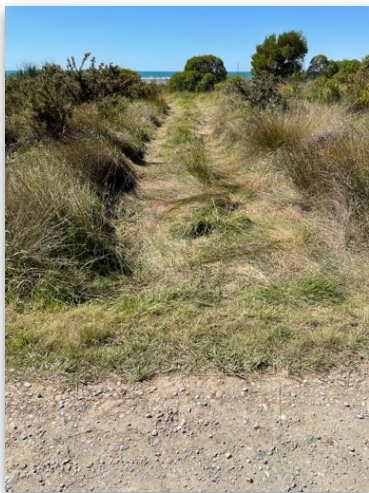
LEH Baigent Reserve, Kina Peninsula

It's pleasing to report that there has been an overall reduction in unsociable activities during the past few months. Littering in some areas continues to be a problem but is usually minor. Hooning has largely been reduced but vigilance to stop this continues to be needed. The very wet winter may have helped but continued surveillance followed by warnings, fines and in some cases vehicle impounding or similar may at last be having an impact. There was however an incident in July when bollards were removed to gain access to the foreshore and a fire was lit but the individuals were identified. Temporary fencing of the larger grassed areas that has been in place since about May has also helped to deter hooning.

We continue to ask residents to contact TACA asap if they are aware of hooning, littering, vandalism, freedom camping or bush-bashing etc. Please note the time, rego (if possible) or at least vehicle type and colour. Photos are of course very useful but please don't confront anyone. Call Richard Clement on 027 526 6700 with any details or any committee member.

The number of beach fires reduced but the weather likely had an impact. We are now into the busier season for reserve usage and it is the time of year at greatest risk for any fire source to quickly get out of control. **So, if you see a fire anywhere on public land on the Kina Peninsula, call 111.** No fires are allowed except by permit. TACA is investigating with the authorities whether a Total Fire Ban at the northern end of the Kina Peninsula would be more appropriate.

Bush bashing by 4WD on to the seaward-facing nesting area has again occurred but was largely stopped by the placement of very large logs and rocks to block the main access points. However, there was an incident of blatant vandalism in mid-October when a group drove several vehicles across the bush reserve (see photo) to gain



access to the beach for lighting a fire. This incident has been the subject of further investigation, as it involved a well-known group from outside our area who have repeatedly abused recreational usage of this community reserve.

All we ask of users is that they obey TDC signage and do the same as the vast majority, by parking in numerous spots alongside the road. It's then an easy walk along already formed paths to gain access to the beach.

At the end of August David Easton organised another working bee at the Reserve. About a dozen people (see photo) again turned up and made further progress with weeding, mulching, removing guards & adding fertiliser where necessary. Increased bird life was noted, including Tui & Bellbird. The next project will be to mark out tracks to be cut as well as the usual weeding etc. It's pleasing to note that the plantings from a few years ago in the main open area continue to flourish.



So the Reserve is looking great due to the efforts of all the volunteers. In partnership with TDC it's a community-funded and maintained asset for all to enjoy. TACA will shortly instal some more picnic tables to cater for the increased usage of this reserve.

As previously noted, TACA will also host the first family-oriented Picnic Day at the reserve to promote the area. This is now scheduled for late Summer 2023 and details can be seen on the next page.

Once again, TACA alone cannot put a stop to wilful damage. We need the eyes and will of the community to take action when anti-social activity is noted. Most of it is committed by people from outside Tasman/Kina, so vigilant reporting is still necessary. Please help us to preserve the LEH Baigent Reserve and other public areas for the benefit of all responsible users. Thank You!



TACA invites you all to our inaugural Big Family Picnic. Come and enjoy our amazing LEH Baigent Reserve with our beautiful community. We will keep the kids occupied while you relax and catch up with friends and family and meet new people.

There is the TACA-fundraised gas BBQ to use, so BYO drink & food to BBQ and as always we will be interested to hear your thoughts on other ways we can improve our fantastic area.

Don't forget the sun screen and be safe if you bring your boat. We're sure there will be some that would love a go on a sea biscuit, so if you feel like helping out a little, please make contact but most importantly it's about enjoying this wonderful place we call home.



Our school year has ticked by very quickly as we squeezed a number of events into the year's programme.

The main focus across the school for Term 3 was our school production,



'Charlie and the Chocolate Factory'. Such a production has not occurred in recent years and this was a celebrated event for the year, especially given the disruption that COVID has caused to other events since the start of 2020. As our school hall is too small, we were fortunate to hold the event at the Tasman Church facilities over two days.

Also during Term 3 our Year 0-5 students spent two days at Whenua Iti as part of the Mini Adventurers and Mini Explorers programme. These two days allowed students to participate in teamwork activities and tasks that enhance their understanding of the environment.

At the beginning of Term 4 our Year 4 and 5 students experienced a two night camp at Bridge Valley. Our Year 3 students also visited for one day. Activities included the climbing, the zip line, hydroslide, the slick water slide, jumping platform and game of hide n' seek and football against the adults supporting the trip.

At the time of writing our Year 6-8 students are making their final preparations to attend the Lake Rotoiti Camp. Their activities will include a boat ride down the lake and a return hike, high ropes course, kayaking and orienteering.

One notable improvement on our grounds is refurbishment of our playing court. This has been resurfaced with new lines being repainted. To cater for our junior students we have also added two new adjustable basketball hoops, creating a second basketball court for use at lunch times and physical education classes.

SALE NOW ON



Natives - Exotics - Grasses - Ferns
Attractive prices - Great Quality

The Nursery
@ 35 Horton Road, Tasman

Open Wed, Thurs, Fri 8.30am - 4pm,
Sat 10am - 3pm or by appointment

www.thenursery.nz Jo: 021 122 3056

**Sale week open every day
1st - 10th December (closed Sun 4th)
20% off everything
Plus bargain bins
Root trainers \$1**



We have made progress with our new library plans and with everything going in our favour this should be complete by the end of the April school holiday in 2023.

Rob Boomer, Principal, Tasman School

Te Mamaku Drive Native Corridor Project **BIG CLEARANCE WORK HAS VISIBLY STARTED ON** **SH60 AND WE NEED YOUR HELP!** **PLANTING SCHEDULED MAY/JUNE 2023!**

We have an ambitious plan to convert the abandoned land along the Te Mamaku Drive on the eastern side of SH60, formerly known as the Ruby Bypass, which is totally overgrown by gorse, wattles and wilding pines, into a green corridor linking the Mouhere Inlet and Waimea Estuary between Tasman Village and Māpua.

The popular Dicker Ridge Loop Track runs through the entire project and is frequently used by walkers, bicyclers and horse riders.



Divided into more than 11 sections/blocks to work with, we already have finished clearing and planting Block 0 at the northern end in June/August 2022 of 500 metres in length, thanks to the generous support of TET (Tasman Environment Trust) and Restoring the Mouhere.

Work on Block 1, about 350 metres in length and approx. 1.5 hectares of land, has been funded so far by Rātā Foundation, a TDC Community and Network Tasman grant and we can now happily advise that the land was cleared at the end of October 2022. Spraying of re-growth of weeds will happen at the end of autumn and planting is scheduled for May/June 2023.

Our efficient contractor Aaron Baigent has not only cleared Block 1 but Block 2 as well (another 350 metres & another 1.4 hectares)! As the machinery was already on site, it took only a couple of days to get this site tidied up too.

As we have no current funding for Block 2, we are now seeking the support from additional local sponsors:

- to cover the cost of clearing (approx. \$8,000),
- spraying of re-growth of seed in April/May 2023 (approx. \$3,000),
- buying about 6,000 plants, plant guards, planted by a planting contractor (approx. \$20,000).

This is our "business card" or "entranceway" to Motueka and the Abel Tasman National Park while driving down the SH60 towards Tasman and the first visible results can be seen now!

Please be a part of our ambitious project; your support would be very much appreciated by the wider community! Work is too big for working bees, so we are asking for financial donations via our Givealittle page, <https://tinyurl.com/39bebsek> at this stage of the project.

Michael Markert and David Short

Our webpage: <https://tinyurl.com/ytdvdtpe>



Stafford Drive reopening

STOP PRESS: As we go to print the following is a copy of the Media Release just released by TDC today, giving the latest update.



Stafford Drive set to reopen as slip material cleared for removal

23 November, 2022

Tasman District Council has given the go-ahead to clear the slip blocking Stafford Drive with work to begin within the next four weeks.

Access to the section of road, which provides a main thoroughfare connecting Māpua, Ruby Bay and Tasman Village, has been closed since a major slip brought a large amount of material across the road during the August 2022 weather event.

The situation prompted safety concerns around the stability of the cliff face above.

Council staff have spent the last three months undertaking investigations and consulting geotechnical experts in order to gather the best information and advice in the decision-making process.

Community Infrastructure Group Manager Richard Kirby said while a long term management solution would be required to address the stability issues of the cliff face, potential risks associated with clearing slip material off Stafford Drive could be safely minimised to allow the short term reopening of two lanes.

"The slip occurred in August 2022. It is now three months later and the road remains closed – with summer almost upon us and the likelihood of more traffic on our region's roads, extending this time any further is not tenable and we need to make a decision."

"So, on that basis I have asked for the slip to be cleared away and opened to two lanes within the next four weeks."

Richard said if the long-term risks associated with reopening both lanes are considered too high, measures can be implemented.

"As part of the decision-making process we have developed a safety management plan which could enable the road to be reduced one lane if necessary, based on observations as slip clearance work proceeds."

The Council is currently working alongside contractors to confirm a start date for the clearance.

Tasman Area Community Association

Support your Association to continue their work. TACA was set up in 1989 with the purpose of: "Protecting and enhancing the well-being of the residents and the natural resources of this area".

These people have the best interests of the community at heart and meet on a regular basis to discuss local issues & arrange community events.

Everyone is welcome to attend any meeting.

The "Who's Who" in 2022/23 at TACA

David Short	Chairperson	021 222 5066
Greig Caigou	Secretary	027 434 7567
Richard Deck	Treasurer	021 651 909
Steve Richards		022 163 4135
Roger Percivall		021 076 8673
Swantje Melchoirs		021 182 2042
Richard Clement		526 6707
Jon Taylor		027 246 5045
Michael Markert		022 389 2240

If you would like to join our email database to learn about events and news that are relevant to Tasman/Kina, please simply email comms@tasmancommunity.org.nz with your name & TACA email database in the subject line.

TACA meetings
Last Thursday of every month
(no December meeting)
Tasman Church ,
Williams Rd, Tasman
Next meeting:
Thursday 26 January 2023
7.30pm