



coastal Tasman - experience our unique location

Tasman Times

December 2018

While we are a small community here in Tasman/Kina, there is lots going on to keep you informed about.

Thanks to TDC for their help with their ongoing production of our community newsletter.

Editor (E: iamdavidshort@gmail.com, T: 021 222 5066)

From The Chair

As the name of our organisation implies, we are all about communityawareness,

involvement and action. Two people who have recently decided to step down from our committee understand that concept more than anyone.



Pippa Tristram joined TACA in 2016 and immediately got to work on an ambitious task to create a walkway down Kina Beach Road to the peninsula road. Singlehandedly she liaised with Council, applied for grants, organised the contractors and got the job done. Thankfully her other half John is continuing the Tristram contribution.

Hamish Rush is well known to many for his total commitment to the concept of community. He is one of our longest serving committee members and served as Chair from 2008 - 2012. That commitment has always been one of absolute selflessness without ever counting the cost to himself and carries on a family tradition from his father, Colin.

The projects he was involved with are endless but several deserve special mention. Hamish led the way in undertaking the almost David & Goliath task of buying Baigents Reserve, now in the public domain, from Carter Holt Harvey during his time. The building of the bus shelter opposite the Store was a collaborative project that took place in the Rush packhouse and he was always available with a digger, mower or at a working bee.

So thank you again to you, Pippa and Hamish for your uncompromising dedication.

In our end of year Tasman Times we are delighted to support Whenua Iti Outdoors to promote some of their programmes to help people into work and through the holiday period.

Finally may I take this opportunity to wish everyone in our Tasman/Kina community all the best for the festive season and into the New Year. Above all, please stay safe.

David Short
Chairperson

Admin Stuff from the Secretary

2018 Annual General Meeting

Our recent AGM was attended by newly elected CEO of Tasman District Council, Janine Dowding, who was accompanied by Mayor Richard Kempthorne and Councillors Dean McNamara, Anne Turley and David Ogilvie. Janine addressed the meeting outlining her previous employment and with the assistance of Mayor Richard responded to a series of questions from the floor.

The election of officers resulted in the following being re-elected:

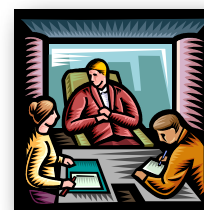
David Short (Chairperson), Greg Dryden (Treasurer), Brian Hanlon (Secretary), Roger Percivall, Richard Clement, Paula Short, Hamish Rush (resigned 26 September), Tony Clark and John Tristram as committee members.

TDC grants

Once again we are very grateful to TDC and to the good work of our Treasurer, Greg Dryden, in securing our ongoing financial support from the Council:

Community Consultation grant	\$2,000 (Sept)
Domains grant	\$1,000 (July)
Paint grant (for graffiti paint)	\$400 (July)

Without this TACA would not be able to achieve what it does for the community.



Local Reserves

Tasman Reserve & Sculpture

It has been noted that car parking at the end of Rush Lane can get quite congested at times and a plan has been created to make a car parking space within the Domain. The plan is to create 10 car parks immediately through the hurricane gate beside the memorial gate. The area surrounding the car park will be bermed and planted with more of the Open Orchard and native planting to screen the toilet. A gateway entrance to the play area will also be created so there is a clear delineation between the cars and children.

It will still be possible to drive through the centre of the car park onto the Domain, providing access for the lawn mowing tractor and so the rest of the Domain can still be used for parking for larger events like Muddy Buddy and Carols in the Domain.

A bollard is to be installed in the centre of the Memorial Gates to discourage driving on the cycleway. It is hoped that this initiative will relieve parking pressure in Rush Lane and encourage more use of our wonderful domain.

It is hoped to commence the work in Autumn/Winter 2019; if anyone has comments or suggestions, please feel free to bring them to any of the TACA committee or come along to our monthly meeting.

The road reserve to the side of Aporo Road was planted with low growing natives during early spring and covered in mulch.

Over at the sculpture the area was looking rather untidy with long grass at the entrance and numerous dead weeds rotting in the ground. Recently two of our committee spent a total of 5 man hours trimming the entrance and tidying the mulched area with more work planned to beautify the area. The bund along Rush Lane has been cut back and it is proposed that we mulch this area and plant Coprosma as a ground cover.



Mill Point site Recovery Project- Kina Beach Road

A couple of good working bees have seen the site pulled back into shape and some TLC administered to the earlier tree plantings to ensure they are developing well. So prolific has been the growth of the cover plantings of Ngaio and Manuka that we have now had to start opening “skylight windows” through the understory to ensure the Totara planted a year or so ago can now develop to their full potential – it never ceases to amaze me just how rapidly those wee “root trainers” spring into life – as you can see from the picture a couple of hours with the chain saw can generate a goodly pile of prunings.



As the pile of crushed mussel shells diminishes so our path network continues to grow making the whole site more accessible both for pedestrian traffic and barrows – a couple more loads will, I think, see the job done and I will be looking for another TACA Community “bash” in the New Year to speed that process along – as did the last one.

We meet the first Saturday of each month but our last for the summer will be December 1st when mince pies will be added to the usual fare at the half time smoko. Always glad to see new faces and never a lack of satisfying tasks to do.

Tony Pearson (Working Bee Leader)

Kina Beach Walkway

Some of you may have noticed in the past few days that work has started on the repairs to our walkway after the storm damage from Cyclone Fehi back in February.



It looks as if this work will make the walkway more resilient into the future for walkers & cyclists. Once again many thanks to TDC for helping to make this area safer for all.

Kina Beach Reserve

During the winter activity at the Kina Beach campsite is normally much reduced. However, with McKee Reserve campsite at Ruby Cliffs having been closed due to storm damage in early 2018, the Kina Beach campsite hosted considerably more travellers than normal. Many of these folk assisted Jenny, the campground Manager, to finally clear the debris dumped during ex-cyclone Fehi. The Community Services team also returned to help with this work, so the campground was back to its normal tidy appearance by the end of July.

McKee Reserve has since been re-opened so Kina Beach should be able to cope with the expected high summer demand. In fact demand is already very high and Kina Beach is already full most nights and Jenny has been directing later arrivals to McKee Reserve.

The two piles of driftwood storm debris still remain on the reserve but are slowly diminishing. TDC have a plan in place for these to be burned but there have been delays to taking action, mainly based around primary issues that all need to coincide. These are: the wood needs to be dry enough; the fire service has to be available and a current fire permit signed off; neighbours have to be informed; the wind needs to be in the right direction; and there are to be no nesting birds.

A couple of hooning incidents unfortunately occurred at about the same time as those at Baigent Reserve, but it's to be hoped that

problem has now been resolved after some local Police activity.

A survey of the campsite and reserve has recently been undertaken by TDC prior to the erection of new toilet facilities. The team included an iwi representative and an archaeologist, as ground needed to be checked at the proposed sites. This was to ensure there would be no issues with disturbance of ancient human usage or burial sites during installation of the new toilets. It's hoped the new units will be in place before Christmas.

TACA is on facebook

After starting our facebook page late last year, TACA is slowly building its social media presence.

We've shared a few of the happenings around our area and currently have an increasing number of followers. This year we'll endeavour to post a lot more information on the progress that TACA is making on local issues that affect you as well as local events and happenings in our community.

Help us spread the word by liking our facebook page and sharing our posts. You can find us at www.facebook.com/Tasmanareacommunityassociation.

Join TACA's event database

We would like you to join our database to keep you informed of all of the events and information that is relevant to our Tasman/Kina community.

All you have to do is to send an email to the editor, iamdavidshort@gmail.com with your name.

Note that you can easily unsubscribe at any time by emailing the editor.

Over the summer we will be phoning you as part of a project in conjunction with the Mapua & District Business Association to help them update the Ruby Coast Phone Directory.

At the same time we will be inviting you to join our event database.

Jester House News



Another year has passed and the café has had another birthday; 2018 marked the 27th year of Jester House. To celebrate we treated you all to a blast from the past with some dishes from our original menu at 1991 prices! Who can remember coffee at \$1.99? Who even can remember 1c and 2c pieces? Funny thing is, we still accept them as legal tender here at Jester House. In our world 100 1c pieces still make \$1.00. It's not all old school here though. We're proud of our new website which is very 21st century and includes an on-line shop. Now you can do your Christmas shopping for Jester House Tee shirts, colouring books, enamel mugs etc from the comfort of your lounge at www.jesterhouse.co.nz/shop/. We can also help you with your Christmas baking. Steve the baker is busy baking the most delicious Christmas cakes so you don't have to. They come in 2 sizes: a small Christmas tree cake or the 1.5kg round family size. They make great gifts for friends and family and can be ordered on our on-line shop or at the café.



The website still has all the old functions as well, like the sign up page for our Birthday Club. Once you have joined, we'll send you a birthday card on the month of your birthday. Then you can come to the café and enjoy a free birthday lunch.

Talking about schools, we took great pleasure in supporting the Tasman School with their latest fund raising event "Art Bid Win." The event was held at the Frost and Fire Gallery on Harley Road. It took a lot of hard work by the organising group to get so many high calibre artists involved and their work displayed for sale and subsequently sold. On the night Jester House provided the catering and our team of year 8 helpers were outstanding. They looked and acted like professional servers and we look forward to them coming to see us in a few years for jobs! Best of all, the school raised about \$12,000 to go towards important school projects.



Coming into the festive season the café gets quite busy, so if you're coming with a group, please do book a table so you are not disappointed. You can ring us or go to the website and book from there. As usual the café will be closed Christmas Day, Boxing Day and New Years Day, open every other day from 9am until 5pm.

We wish you all a very pleasant Christmas and a happy New Year.

Judy, Steve and the Team at Jester House.

Tel: 03 526 6742

Email: lunch@jesterhouse.co.nz

Web: www.jesterhouse.co.nz



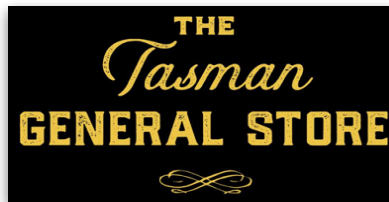
The pool project is moving steadily in the right direction. After TDC granted consent to build the changing sheds, the project gathered momentum and it's exciting to now see the weekly progress. The framework for the changing sheds is up and by the time you read this, the roof should be on. We are hopeful the pool will be operational after Christmas and if anyone wishes to volunteer some time to help maintain it and do the required daily checks, we would love to hear from you.

The next stage of the project, once the sheds are finished, is to install some sort of solar heating - if anyone has any contacts or ideas for this, your input is welcome. Shade sails are also on the wish list.

Funding is still required to finish this project so we are open to suggestions for future fundraising ideas. All those who have contributed in any way are much appreciated and we are looking forward to being able to use this stunning new facility in the very near future.

The Tasman General Store News

It is almost hard to believe that we are about to go into our second summer here, and there have been a few more exciting changes.



We have joined with Celcius Coffee to provide 100% organic, fair trade coffee which is roasted locally in Motueka. The Cup-cycling system will soon be in place at the Store and you will also be able to purchase a Tasman General Store takeaway cup, so that we can help with reducing the amount of takeaway cups going to landfill. Currently we have a wee prize draw running until Christmas; buy a coffee and a scone or slice and you can enter the weekly prize draw for a dozen scones. Come and check it out and be into win!



Another exciting addition to our coffee making is Oaklands milk. Delicious whole A2 milk is now used, along with our other options of soy and almond. We are also stocking retail Oaklands bottled milk, whole and light, for \$3.40 a litre. Just bring your bottle back in and it feels like the good old days again. It was quite amazing putting the recycling out last week, and just how much less there was with the reduction of the plastic. Oaklands milk is delivered fresh Tuesdays, Thursdays and Saturdays.

Adele has been busy experimenting with some new vegan slices and we have added raw Green Goddess and raw Cherry Ripe to the cabinet. They are rather addictive and we will be looking to add another over the summer months. Look out for a few Christmas treats over the coming weeks as well.



A big thank you to everyone in the community who has supported the Store and been a part of the journey for us this year. A massive thanks to the amazing staff who keep the place humming as it gets busier and busier.

Have a wonderful Christmas with family and friends. The Store will be closed Christmas day and Boxing day as well as New Year's day so we can all be with loved ones and catch our breath for 2019.

Meri Kirihimete,

Becs, Sonny and all of the staff at The Tasman General Store

www.facebook.com/tasmangeneralstore



2018 has been a very busy year for Tasman School. Our school roll is currently 114 students and we are expecting a number of new entrant enrolments at the start of next year.

Our major successes and special events in the second half of 2018 include:

- A very positive ERO report was received in June. This can be viewed in this link: <https://www.ero.govt.nz/review-reports/tasman-school-08-08-2018/>
- Implementation of an outdoor play-based learning area outside Room 1.



- One ski trip and four teams of four students were sent to the Nelson and Marlborough Primary Schools' Ski Championships at Rainbow Ski Area.
- Sending four Year 7/8 teams being to the Bluelight Police Challenge against other Nelson schools.
- In the regional Nelsomathix (mathematics problem solving competition) our Year 8 team was placed 6th out of 26 teams. This builds upon very good placings from last year.
- Participation in 2018 Nelson Arts Festival Masked Parade.
- Our senior camp for Year 6/7/8 students took place in Wellington and our students were exposed to a wide range of locations and experiences. In the second week of December our Year 3/4/5 students will be staying overnight in Kaiteriteri.
- At the Moutere Hills Athletics our senior baton relay won the cup and Nikau McMurray won the Peace Shield by being the fastest student in the 200m sprint race.



- A financially successful Art Bid Win art auction raised approximately \$12,000 in November.
- Outstanding performance in relation to the old National Standards results (in reading, writing

and mathematics at least 90% of students were 'At or Above National Standards').

Looking towards the 2019 school year...

Susan Shand has been appointed to a permanent position after completing a one year fixed term position in Room 2 (Year 2/3). She will continue to work at the same level. Cate Cable has been employed to teach as a beginning teacher in Room 4 (Year 5/6). Cate brings a passion for the performing arts and a wealth of experience working with children in previous roles.

'Muddy Buddy', our major fundraising event, will take place on Sunday 31st March. We're very appreciative of local support we receive for this event.

The swimming pool and new changing block facilities will be ready for the start of the school year. Next year property works will focus on internal renovations and the creation of a multipurpose learning area for science, cooking and art within the main school block.

Teachers will be involved in Motueka Kāhui Ako professional development on January 31st, 2019. This will involve all 14 schools from the Motueka District. Students will be welcomed back to school on Thursday 7th February at 8:55am.



NBS TASMAN GOLF CLUB (Inc)
128 Cliff Road, Kina Beach
Ph 03 526 6819

Email: teeup@tasmangolfclub.com
www.tasmangolfclub.co.nz

Our Concession books are 10 rounds of unlimited daily holes for \$150.

Membership options range from just \$85.
 Children under 12 Free.

If you are unsure about playing golf, come along on a Friday morning and enjoy a social round with a fun group of both beginners and experienced golfers. Tee off 9.30am.

For more information
 contact Claire at the Golf Club.

Vet's Voice

Is Your Home Safe for Your Fur Baby?

When the decision is made to make a new pet part of the family, providing a safe environment for them is important. Preparing your home for a new puppy or other pet is similar to baby proofing your home. New pets are inquisitive by nature and will want to investigate everything, including those things that could be dangerous. It is up to you as a responsible pet owner to make sure each room of your home provides a safe environment for your beloved pet.

Dog Proofing Kitchens and Bathrooms

Kitchens and bathrooms tend to house dangerous items such as cleaning supplies, medications, and other chemicals. These are two rooms where dog proofing is imperative. To keep pets safe in the kitchen and the bathroom, consider the following:

- Place items such as cleaning supplies, medication, and laundry soaps on high shelves.
- Keep all food out of reach of your pet as some items can be dangerous for consumption and even if the food does not

pose a threat, the packaging could be a problem.

- Keep trash cans securely covered so that pets cannot get into garbage.



Mapua Clinic 5402329
Motueka Clinic 5288459
Richmond Clinic 5445566

www.vetcentre.net.nz

"Personal Care for All Animals"

NZVA Best Practice Accredited
(Tasman's only accredited Practice)

Kina Open Tournament

Sat 16th & Sun 17th February 2019

in association with Motueka Super Liquor

Tasman Golf Club at Kina Cliffs

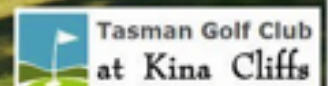
**Where spectacular views
are par for the course**

TEE UP THIS SUMMER AT TASMAN GOLF CLUB

Fantastic Prizes: Best Net wins a round of golf for 2 at the prestigious Cape Kidnappers course in Hawkes Bay.
Other Prizes for best Gross, Net and Stableford scores in grades for men and women.
Entry Fee is \$60 and includes Twos, the famous Kina Open on-course BBQ and after match snacks.
All players welcome! Minimum handicaps for main Prize [Best Net] are 24 for men and 30 for women.
Call us for more info: 03 526 6819

Check out our website at www.tasmangolfclub.com or visit us on Facebook @TasmanGolfClub

Tasman Golf Club - 128 Cliff Road, RD1 Upper Moutere, Nelson
teeup@tasmangolfclub.co.nz | www.tasmangolfclub.com



- Consider installing childproof latches on cabinets, as some pets are not only curious but quite clever.
- Make sure your pet hasn't jumped into the dryer for a nap before turning it on.
- Look for and block up any small spaces such as holes in cabinets, or small spaces behind the washer and dryer.
- Keep the toilet lid down to prevent pets from potentially drinking harmful chemicals.

Dog Proofing The Living Room

While the kitchen and bathroom might pose some of the most serious threats to pets, the family room also contains items that could be dangerous. To make sure pets are safe in the living room, consider the following:

- Move house plants out of reach and better yet, make sure that any plants placed in your home or yard are safe for your pet and do not pose the threat of poisoning.
- Check and make sure that any air or heating vents have proper covers.
- Keep dangling wires from televisions, lamps, stereos, and other items out of reach of pets.
- Put away any breakable items such as knick knacks that your new pet can knock over and break.
- Put away any kids games or toys that contain small pieces which can be a choking hazard to your curious pet.

Dog Proof The Bedroom

Not a lot has to be done in most bedrooms in order to dog proof. However there are a few steps that can be taken to make your bedroom safer for your pet:

- Keep any lotions, medicine, or cosmetics that might be on a bedside table out of reach.
- Place any electrical wires in an area where your puppy can't access and chew on them.
- Keep shoes and laundry out of reach of pets as strings and buttons can pose a choking hazard and potentially even more serious issues if ingested.
- Make sure pets are not sleeping in closets or drawers before shutting them.

Dog Proof The Garage & Backyard

Just as with the kitchen and bathroom, the garage and backyard can be home to a number of items that are dangerous for pets. If your pet will be spending any time in the garage or the backyard, consider doing the following:

- Clean the floor of the garage to ensure that chemicals such as antifreeze are nowhere to be found. Chemicals such as these can cause death if ingested.
- Move any chemicals in the garage to either high shelves or a closet space that can't be accessed by pets.
- Keep tools and other sharp objects in places where pets cannot access them.
- Make sure any plants in your garden are safe for pets.
- Check the fence for any holes or spaces where your pet might be able to squeeze through and patch them up or consider boarding the spaces.

Baigent Reserve, Kina Peninsula



The large macrocarpas that had been killed by saltwater damage in early 2018 have been felled and the wood put to a variety of good local usage. Dead birches are also to be felled.

TDC approached TACA for its views on whether Baigent Reserve could become a permanent freedom camping site, complete with new toilet and other facilities. As the Reserve was acquired for daytime only usage (primarily by the local community) TACA felt it would be inappropriate for it to become dominated by the expected large influx of overnight transitory visitors.

As reported in the July issue of Tasman Times the Baigent Reserve picnic area had recently suffered from anti-social activities. This continued in July and August. The shade sail was damaged and required repair, littering increased, and there was repeated hooning across the central grassed area: basically ripping it all up (see photos of damage done). TACA reps discussed the issue at length at several meetings, also with TDC personnel, and the Police were informed. Various ideas to try to prevent further damage were assessed, including the installation of any or all of cameras, gates, permanent bollard fencing and even an onsite caretaker.



After further hooning David Easton and Hamish Rush erected temporary fencing and David re-seeded the damaged grass area. The Police were again informed about the continuing anti-social activities. The fencing fortunately proved to be a sufficient deterrent to further vandalism and the grass has returned with Spring growth (see photo below). In October the Police took some action against certain individuals who were suspected of being the perpetrators, so we are now hopeful that this period of disappointing anti-social behaviour has ceased. David Easton has now removed the temporary fencing, so we look forward to the Tasman community and visitors being able to enjoy Baigent Reserve as before.



On behalf of the local community, TACA wish to express their appreciation to David Easton for his positive action to both deter further hooning and to encourage quick grass renewal. TACA also wish to thank the Police for following up on the various issues raised during the past few months.

A working bee in July saw several species of salt-tolerant trees planted to replace the salt-intolerant ones killed by the ex-cyclone Fehi inundation. A date for the next working bee is still to be set but we will notify all community members by mass mailing.

With Hamish's resignation from the TACA committee, so he could devote more time to family, Richard Clement has taken over his role. If any of the community has an issue to discuss about Baigent Reserve then please direct it to me rather than Hamish. Thanks.

Richard Clement

Tasman Bible Church – June 2018

Christmas Already!

The older we get the quicker time travels—this is a little-known fact. Here we are rushing headlong toward the end of another year. When I was young it used to be ages before another Christmas rolled around. Now it comes every couple of months (or so it seems).

The problem with this odd wrinkle in the space-time continuum is that regular things easily become rather blasé. Birthdays, anniversaries, Easter and even Christmas, fall due so regularly they become more or less just another day.

Back in the “good old days” of actual mail, cards and written letters, you had to give thought well ahead of time to special days. Now everything is so much more instantaneous and convenient. But perhaps convenience is a mixed blessing. Does anyone actually bother to send email Christmas greetings? I suspect not.

In 2018 we have so many opportunities to have “special days” it really does take an *extra-special* day to get our attention. Christmas day ought to be one of those. But it too has become somewhat mundane for many. It is now considered just another holiday, like all the rest. The underlying reality of what Christmas day represents, however, is remarkable. In fact, it is a wonder the whole country does not come to a standstill as we consider, in awe, what this day signifies in the cosmic scheme of things. Even Christians—people who think a lot about God and about what he has done and is doing in our world—can easily lose sight of the tremendous truth that Christmas day represents.

J. I. Packer, a respected Christian author puts it this way.

“Nothing in fiction is so fantastic as is this truth of the incarnation. If Jesus had been no more than a very remarkable, godly man, the difficulties in believing what the New Testament tells us about his life and work would be truly mountainous. But if he was truly the Son of God, it is much more startling that

he should die than that he should rise again. And if the immortal Son of God did really submit to taste death, it is not strange that such a death should have saving significance for a doomed human race. The incarnation is in itself an unfathomable mystery, but it makes sense of everything else that the New Testament contains.”

1. J. I. Packer, *Knowing God*.

—Geoff Paynter

More info, www.tasmanbiblechurch.org.nz



Part of the Tasman Community for over 50 years



Wednesdays @ 7pm



3rd Friday monthly, 10:30am



Wednesdays @ 10am

— Church Service on Sundays @ 10:00 —



Christmas in the Tasman Domain

12noon - 3pm Sunday 9th December

Tasman Memorial Reserve
(by the Tasman, Costal Hwy Turnoff)

A **FREE** family event to celebrate **Christmas**

Refreshments, Home Baking, Sausage Sizzle and Bacon Butties Provided

- * Live Music
- * Bouncy Castles
- * Water Slide
- * Spot Prizes
- * Lolly Scramble
- * Face Painting

If wet the event will be held at Tasman Bible Church
Williams Road, Tasman



Tasman Bay Christian School

www.tasbaychristian.school.nz

**We welcome all students back to school on
Monday 28th January 2019**

New enrolments and enquiries:

Our office will be open

Wed 23rd, Thur 24th & Fri 25th January

Principal: Steve Matthews

ph: 027 4249223

office@tasbaychristian.school.nz

ph: 03 5266855 or email: office@tasbaychristian.school.nz



Restoring the Moutere inlet



Over the years several people have made attempts to plan for restoration of the water quality and biodiversity of the Moutere inlet – our very visible aquatic back yard. For a variety of reasons this hasn't led to the sustained long-term effort that is required. There have however been notable successes with individual sites such as Baigent's Reserve and the Mill Point site. Recently a group of us have got together to start planning for a coherent approach to improve the estuary, its water sources and our general environment.

So what is different this time? Firstly there is a wider recognition that agencies such as DOC and TDC cannot achieve the required improvement on their own and there are region-wide plans being drawn up to integrate local efforts like ours into the bigger picture. Secondly there are now a range of active projects around us such as the Mapua dawn chorus, the planting at Dominion flats, the Battle for the Banded rail on the Waimea Estuary and work on Pearl and Neiman Creeks, all within the Tasman Environmental Trust umbrella, that have considerable momentum and can provide lessons and support for us. If conservation efforts are to

achieve any landscape scale, then the linking of projects such as these is essential. There is also we believe a greater awareness of the need to restore and enhance the environment we have.

So a small informal group of us has had a preliminary meeting to discuss how we might proceed. Our first step is to create a plan of work that is do-able and will fit with larger regional initiatives for efficiency. The plan needs to be realistic, to identify areas where significant gains can be made, that will engage the local communities, that will have an educational value and so be of potential benefit to our local schools, and that can engage ..with developers to ensure new developments are sympathetic to our environment and aims.

These are early days, and these are not short-term one-off endeavours (trap lines require continual monitoring, plantings need care and weeding etc.), but with a good start and careful application of resources such as external funding and our own efforts, we are confident of making progress. There will in future be plenty of opportunities for engagement in specific activities, and if you are keen to contribute to the planning and set up, then please contact your local TACA representative – we need willing movers and shakers.

Ruby Coast Sculpture Project

Looking for that unique Christmas or holiday gift? What about a genuine piece of the Ruby Coast's



Gateway Sculptures? During December The Ruby Coast Initiative Trust (RCIT) will be selling the actual fish cut outs from

the Mapua Sculpture. These are all unique one-off pieces created from Mapua School pupils' drawings. Each piece will be numbered and its location on the Mapua sculpture identified.



A great local gift and a great way to support the Gateway Sculpture project. Planning is well underway for the 3rd sculpture with a successful grant application to cover the costs of resource consent – the next step in the process. Purchasing a sea creature from the Mapua Sculpture is not only a unique gift (even for yourself!) but also contributes to the Trust's fundraising for this next sculpture which will be in place at the Seaton Valley and Coastal Highway intersection next year.

If you would like to register your interest in the purchase of a piece from the Sculpture, please email to secretary@rcit.co.nz or phone Janet on 540 3364.



2018 has been a bumper year for Whenua Iti Outdoors with more programmes, more participants, more people learning and growing in the outdoors - we'd like to offer a huge thank you to our community for all the support you give – we could not do it without you!



Looking forward to 2019, we have new Trades Academy programmes to complement our ever growing list of opportunities on offer. We are launching an Environmental Science programme which is the perfect option for anyone thinking of working in conservation and related fields. All our



Trades programmes are fully funded and offer NCEA credits.

If you're looking a fun way to kickstart the year, we have holiday programmes on offer from Year 5 all the way to Year 13. Senior Journey (Yr 9 and 10) and Adventure Skills (Yr 11-13) both run in January and have a few places left for some adventurous fun with a bunch of new mates.

If you'd like to find out more about WIO, please visit www.wio.org.nz email us info@wio.org.nz or give us a call on 03 526 7842. We'd love to hear from you!



Welcome Packs

Welcome packs containing vouchers, telephone books and local information are now being made available to newcomers to the Tasman area by the rural postal delivery agents for RD1 and RD2. If you are new to the area and haven't received a pack, speak to the rural post driver or call the Secretary, Brian Hanlon on 021 265 3153.

Tasman Area Community Association

Support your Association to continue their work. TACA was set up in 1989 with the purpose of: *"Protecting and enhancing the well-being of the residents and the natural resources of this area".*

These people have the best interests of the community at heart and meet on a regular basis to discuss local issues & arrange community events.

Everyone is welcome to attend any meeting.

The "Who's Who" in 2018/19 at TACA

David Short	Chairperson	526 6877
Tony Clark	Acting Chair	526 6171
Brian Hanlon	Secretary	03 970 0565
Greg Dryden	Treasurer	526 6151
Steve Richards		526 6742
Roger Percivall		526 6230
Paula Short		526 6789
John Tristram		526 6109
Richard Clement		526 6707

TACA meetings
Last Wednesday of every month
(no December meeting)
Tasman School Staffroom
(AGM July, Tasman School Hall)

Membership 2018/19

The association is a voluntary group, which relies on annual membership subscriptions, sponsorship and grant applications to carry out the work they do.

Membership is \$5.00 per family or \$2.00 an individual. To join please complete the section below and post it to Greg Dryden, 14c Kina Beach Rd, Tasman 7173 or drop it with your donation to the Tasman Store or by internet banking.

Subs for 2018/19 are now due.

Name.....

Address.....

.....

Phone.....

Email.....

Amount enclosed \$.....

Receipt needed (circle) Yes No

For direct credit online, please pay to Tasman Area Community Assoc., Westpac, Motueka Branch Account No. **03 0693 0141622 00** & include your name and initials as per the sample bank statement box below.

Statement Details	
Details to appear on your statement ² <small>These fields help you identify what the payment is for</small>	
Particulars	<input type="text"/>
Code	<input type="text" value="TACA"/>
Reference	<input type="text" value="Annual Sub"/>
Details to appear on recipient's statement ²	
Particulars	<input type="text" value="Your Name"/>
Code	<input type="text" value="TACA"/>
Reference	<input type="text" value="Annual Sub"/>