

Tasman Times

December 2023

A big welcome to the summer edition of our community newsletter. You'll find updates on local issues and projects in the Tasman-Kina-Mariri region, plus regular features including "Locals", showcasing the stories and connections which have helped to shape our vibrant little community.

As always, a big thank you to the Tasman District Council for their continued support in the production of this newsletter.

We would love to hear from you if you have news of upcoming events, adverts or suggestions for other content.

Editor, Simon Thomas, sim.thomasnz@gmail.com

As a previous chairman of TACA some 10+ years ago, I am excited to be back leading and representing our great little community. Since being back in the role, we have a newly elected treasurer, Mary Lithgow, and the previous chair, David Short, has remained a valuable committee member. I want to take this opportunity to thank David for all his hard work. He has worked tirelessly over the past few years for the greater good of our community.

Currently, TACA is working with other community members to plant and re-vegetate the Te Mamuku Drive roadside. I want to thank all those involved, as this project would not have been possible without the support of numerous individuals and businesses. This multi-staged development will take several more years to complete and will be a fantastic achievement for such a small community to not only take on, but also deliver. *See page 7.*

For those of you who are unaware, Richard Clements has been working hard to continue the development of the AF8 Emergency Response Team (*page 5*). In short, this involves several community members taking leadership roles in an emergency to coordinate with regional and national civil defence services. Hopefully, all this work will not be tested in an actual event in the near future.

One key focus for the TACA Committee in 2024 is reworking TACA's Constitution. This will allow us to refresh the rules we operate under and to represent our community better.

I want to take this opportunity to thank the other committee members of TACA and our local ward councillors for their work this past year.

I wish everyone a Merry Christmas and encourage you all to get out there to enjoy and appreciate the wonderful things the Tasman District has to offer.

If anyone out there has any ideas or feedback they would like to share with the committee, don't hesitate to contact me on **027 406 0133**.

From the Chair - Hamish Rush

Seasons Greetings Folks!

Another year has flashed by, and the Covid hangover remains in the background.

As the newly elected chair of TACA (Tasman Area Community Association) I would like to take the opportunity to introduce myself to those who don't know me. My name is Hamish Rush. I live on Williams Road with my lovely wife and three wonderful teenagers on our family-owned and operated apple and pear orchard.



Hamish - on a rare day off!



Secretary's stuff - Greig Caigou

At this time last year I had reported on meetings for TACA and how we have been so very well supported by local residents, volunteers and Councillors. This continues, with some initiatives representing a lot of effort and organisation and others being small tasks achieved with just as much commitment and thoroughness.

We have also been pleased to see fresh faces from the community coming along to join our monthly meetings. Anyone is welcome at these meetings which occur on the last Thursday of each month, upstairs at the Tasman Church (no December meeting, so next meeting 25th January).

Our standing agenda continues to reflect the scope of TACA's activities, and tracks progress around some key initiatives for the betterment of the community, as reported in this Tasman Times. Most notable are the Te Mamaku Drive enhancements, and plantings along the highway corridor. The AGM in July saw very good attendance and we had the opportunity for committee member Richard Clement to enlighten attendees on the AF8 programme that aims to plan for and prepare a coordinated response across the South Island to save lives in a



magnitude 8+ earthquake along the Alpine Fault. This would particularly affect us in Tasman throughout the shock zones of the Fault. To this end also Civil Defence training is an ongoing project in our community and the CD centre at the Tasman Church will now also be equipped with a radio base.

The AGM saw most committee members volunteer again. Hamish Rush has taken up the reins as Chair of the Association and Mary Lithgow has most ably stepped into the role of Treasurer. Thank you to Richard Deck for your help last year and during the transitioning for Mary.

TACA relies on volunteers and like so many organisations we want to encourage more "locals" to step up and be excited about both maintaining and shaping the lifestyles we enjoy in the spaces throughout our Tasman locality.

May your Christmas season be meaningful and enjoyable.

Greig

Tasman Domain - Steve Richards

The Domain is looking fantastic at the moment, with the grass green from the spring growth. The fruit trees of the open orchard have all been pruned so watch them as summer progresses and fruit starts to ripen.

Remember, this is an open orchard so the produce is available to anyone who wants to take the time to pick some. Sending the children off to forage for macadamia nuts is a good way to introduce them to free and healthy food. Our only request is that you just take what you can use.



The Open Orchard—for us all

Plans are still being formulated for further planting in the domain, aiming to add more food production to boost local food security, increase biodiversity and, over time, decrease the mowing maintenance needed.



Tasman Domain from on high

If anyone is interested in being part of this planning process or has any suggestions for additions to the domain please contact:

Steve Richards, jesterhousesteve@gmail.com
or **022 1634135**

Kina Beach Reserve and Campsite - Richard Clement

No unsociable events to report, so that's excellent news. The campground has seen steady usage of late but was pretty quiet over winter except during holiday weekends.

The Reserve continues to be well maintained by NELMAC and after a request to TDC by the campground manager a Petanque 'court' was installed in the reserve.

Tasman residents are encouraged to visit this area to have some fun playing Boules and enjoy a picnic at Kina Beach.



After steady trapping success through the winter there has since been an obvious reduction in rats being caught in the campground. New locations for the traps and use of a different bait is now underway in case the pests have been getting smart about avoiding temptation.

LEH Baigent Reserve, Kina Peninsula - Richard Clement

Although some rope fencing was stolen, the Reserve has been largely free of anti-social activities during the past 6 months. Long may that continue! David Easton again erected temporary fencing around the main grass area and this once more proved to be an effective deterrent against damaging hooning. Thank you David. A single incident did however occur (not on the main grass area) and resulted in the perpetrator receiving a warning visit. No issue since.

An overnight stayer was noted by a nearby resident so TDC was contacted on **03 543 8400**. Anyone who witnesses any activity that is contrary to TDC signage or detrimental to enjoyment of the area by responsible users is encouraged to call this 24/7 number.



David Easton and his Kina Bird Song group continue trapping and there has been a notable

increase in bird song variety and volume. David's group has also forged walking tracks through the bush, marked by two white posts. Signage highlights that Little Blue Penguins are nesting on Kina peninsula and that dogs should be on a leash to avoid harming nesting birds.



No bush-bashing across the Reserve has occurred in the past several months. It's a pleasing outcome of the various steps taken by TDC, TACA and several Tasman area residents, to stop vehicle damage to

nesting sites and vegetation along the foreshore. Nevertheless, camera surveillance remains in place and if bush-bashing resumes TACA will discuss additional surveillance and other actions with TDC.

The Reserve begins at the start of the vegetation near the end of the rock seawall: NOT at the gate. There is a narrow triangle of Reserve to the east of the road between this start point and the gate. Anyone damaging that land with a vehicle or other means is liable to action taken by TDC under its Reserves Policy regulations.

Dog Owners Please Note:

when walking along the foreshore to the north of the rock seawall ALL DOGS MUST BE ON A LEASH. Bird nesting sites are extremely vulnerable to dog intrusion and a variety of birds nest along the northern part of Kina Peninsula, including Blue Penguin, Banded Dotterel and Variable Oyster Catcher (among others). Dogs are only allowed off the leash from the rock seawall south to Kina Beach Reserve. Dog owners should check the TDC website for indications where dog walking is banned or restricted. Also, to avoid disturbing nesting sites walkers should please only walk BELOW high tide mark. See the Kina Bird Song article overleaf for more on dog handling.



A final reminder: Reserve visitors should contact TDC asap on **03 543 8400** if they see hooning, littering, vandalism, freedom camping or bush-bashing etc. Please note time, rego (if possible) or at least vehicle type and colour. Photos are very useful but please don't confront anyone.

TACA wish to thank all within TDC and others who have supported our efforts to deter the tiny minority who have abused this special public area.

Kina Bird Song

- David Easton



There is so much to enjoy in this beautiful place we live in. Spring has delivered a variety of new life, from flowers to chicks. And local public walks that are getting better and better as each season passes, include -

- **Kina Peninsula:** the new tracks at Baigent Reserve, the Around-Kina-Tip beach walk, and the Esplanade walk at Helme Estate. View the incredible selection of sea birds such as the *Pohowera* (Banded Dotterel), *Ruru* (Morepork), *Tūi*, *Korimako* (Bellbird) plus more.



Banded Dotterel

- **Motueka:** Try the Estuary Loop Walk to see *Pokaka* (Pied Stilt) and chicks, *Weka*, *Wāna* (Swans) and much more.

Thank you to all who have contributed to increased sightings of these interesting birds in our local patch. Your native plantings, whether private or community based, have created the habitat, your predator control has enabled the breeding and most importantly your observation has enabled the enjoyment.



Tui feeding its annoying baby!

Kina Bird Song volunteers have been trapping predators and helping at the Baigent, Kina working bees. And the Te Mamaku Drive project—what a great walk the Williams Road/Te Mamaku walk has become! And what an even greater walk it is becoming with all

the efforts by so many volunteers. This project will create a native corridor from the Moutere Inlet to the Waimea Estuary. As the native plantings grow Kina Bird Song will start trapping and predator control along this route. This is already being helped along by extensive trapping by Williams Road volunteers and by Mapua Dawn Chorus at the Waimea Estuary end.



Variable oystercatchers

The tip of Kina Peninsula is an important nesting area. To coincide with the start of the nesting season we published a leaflet, 'Take the Lead' (scan QR code below), to raise awareness of the threat that dogs pose to nesting birds. It advocates putting dogs on a lead when walking on the beach here. *Koroā* (Blue Penguins), *Pohowera* (Banded Dotterel), *Tōrea Pango* (Variable Oystercatcher), are all present at the tip of Kina Peninsula and nest on the ground.



Kina Bird Song has 73 members registered on the TrapNZ website. If you would like to join our group, or learn more about trapping, get in touch—we can supply materials and advice.

Email: info@kinabirdsong.nz



Tasman Bay
ESTATES

Natives - Exotics - Grasses - Ferns
Attractive prices - Great Quality

The Nursery
@ 35 Horton Road, Tasman

Open Wed, Thurs, Fri 8.30am - 4pm,
Sat 10am - 3pm or by appointment

www.thenursery.nz Jo: 021 122 3056



**Get your orders for root-trainers in
before Christmas!**



Tasman Civil Defence

- Richard Clement

Richard's priority during the past few months has been to encourage local residents to undertake a Civil Defence Foundation course so that the Centre at Tasman Church can be adequately managed around the clock in an emergency.



Eight people have now done the training and a small number have had extra training through their work. It's been good progress but we really need at least twelve to be trained so that various operational roles can be shared without a few individuals bearing all the responsibility. We also need numbers to allow for trained personnel being away from Tasman if the Centre is activated.

Operational roles that need to be covered include: reception and processing, liaison with CD Richmond, TDC, Police, Medical etc, welfare assistance and overall Centre management. If you are interested in becoming a trained CD volunteer please contact Richard Clement on **027 526 6700**. Training is free and the Foundation course can be completed online in your own time. It just requires enthusiasm to learn what is expected of a trained CD volunteer.



Civil Defence nationally has recently developed a Community Emergency Preparedness Plan template aimed at assisting communities like ours to develop our own locally-specific emergency plan. It promotes self-reliance by identifying specific local risks; creates a database of skills and equipment that could be valuable in an emergency; and promotes community teamwork to manage any crisis that arises. The

creation of this plan will therefore be a major project for community volunteers in the coming months.

With summertime approaching and strong predictions that El Nino-driven weather will prevail, it's vital for residents to be extremely vigilant about fire prevention. Predicted hot, dry weather will make our rural area especially vulnerable. Catastrophic fire damage is seen as the greatest risk our community faces, so please take fire safety seriously.

Alpine Fault earthquake - magnitude 8+.

A devastating earthquake with its epicentre on the Alpine Fault is overdue. The risk has been determined at 75% within the next 50 years with an 82% chance it will be of magnitude 8 or stronger. Even though Tasman would likely be some distance from the epicentre it's expected that the entire South Island would be severely to catastrophically impacted. Households therefore need to be aware and prepare as much as possible, even in our area.



For the science behind these predictions and info about preparing, please refer to :

www.af8.org.nz
www.faultlines.nz



For further preparedness check out:

www.eqc.govt.nz/be-prepared or
www.nema.govt.nz/get-ready



As we have become all too aware in recent years, disasters can happen anywhere at any time. Give yourself the best opportunity to cope if an emergency situation should arise.

Kit up!

Make sure you have a fully stocked emergency kit containing sufficient food for several days plus all means of surviving if your home is uninhabitable.



Well Done Moutere Catchment Community!

- Elliot Easton

Wow! Over 375,000 funded plants planted in the Moutere Catchment since 2020! And over 500,000 native plants in total. The scale of our plantings is truly inspiring and we as a community should be proud of this epic achievement.

A massive thank you! And well done, to the hundreds of people who have been and are continuing to put in the hard mahi of planting, fencing, maintaining, and supporting all this fantastic work.

Looking to the future

Early results from our future-focused survey tell us that the community has plans to plant over 300,000 more native plants over the following 5 years.

We will be better positioned to apply successfully for funding if we know what YOU, the Moutere Catchment Community, want to achieve in the future...

Please complete this survey to let us know.

<https://www.surveymonkey.com/r/Mouterefuture23>



Our 1 Billion Trees funding is coming to an end with 2023 being the final planting year via this funding – Elliot Easton will remain employed and be able to provide Moutere land owners with advice and support until at least May 2024.

If you have any questions or projects for which you would like advice or support, please contact ellioteaston@tet.org.nz

We have managed to secure 7000 trees, via 'Trees That Count', for the Moutere Catchment Community's 2024 planting season, and fingers crossed that more funding opportunities arise!

The survey aims to prepare the Moutere Catchment Group for possible future opportunities and drive the direction for the next few years.

Whether you have been engaged with the 'Restoring the Moutere' project or not, if you live in or are connected to the Moutere Catchment we want to hear from you!

All those completing the survey will be invited to discuss the results and the potential future opportunities at our next governance meeting. The information collected from this survey will be held by the project manager - Elliot Easton (Tasman Environmental Trust) and individual data will not be shared with anyone without your permission.

Te Mamaku Native Corridor Project

- David Short and Michael Markert

More than 12,200 newly planted native trees and their plant guards are an impressive sight as you drive along SH60. Covering three hectares of Crown land, the newly planted area was previously covered in wilding pines, gorse and broom.

Thanks to sponsors and funders, including Lottery, Environment and Heritage, Rātā Foundation, Restoring the Moutere, NBS Nelson Building Society, Pub Charity, NZ Motorhome and Caravan Association, Trees That Count, Network Tasman and TDC, together with the help of 850 volunteers hours, a native forest can now begin to flourish, helping enhance biodiversity in the area and create a sustainable ecosystem.

The project will run over many years to create a native corridor between two wetlands - the Moutere Inlet and Waimea Estuary - for migrating birds and insects, as well as for our local folks and visitors who walk, cycle or run on the Dicker Track and Stagecoach Road between Tasman and Māpua.

After this year's planting we have already stripped the adjoining 3 hectares of pines, wattle trees, gorse, broom and blackberries to prepare the site for the winter 2024 planting.



While most of the planting and all of repeated spraying is done by contractors on this difficult terrain, the help of our dedicated volunteers is essential to make future growth possible. Putting plant guards on to protect the little trees from predators like rabbits and from wind and dry weather, as well as hand weeding in the first two to three years, are crucial for developing a shading canopy which inhibits future growth of weeds.



Another 12,200 trees for next year's planting are already sourced and ordered thanks to 'Trees That Count' and to our successful grant from them to celebrate the coronation of King Charles III.

In addition the Lottery grant has paid for clearing the land and Fulton Hogan is generously providing Traffic Management for free.

We are still on the hunt to find sponsors to pay contractors for ongoing, repeat spraying and planting, and to buy plant guards and fertiliser.

We hope for the return of our fantastic group of volunteers. If you haven't yet done so, please join the group and get registered on our working bee database by registering with Michael - michamarkertnz@gmail.com

For more information about the project, photos and an impressive flyover video footage, please scan:



The second half of our year has flown by with a range of varied options for our learners, including:

- Winter Sports tournament in Term 3
- Whenua Iti Mini Adventurers and Mini Explorers programme in Term 3
- School ski trip to Rainbow Ski Area
- Students have received specialised dance tuition with a dance intensive week through Dance Curriculum, culminating in a school dance performance with cameo appearances from most of the teaching staff
- Pet Day and Spring Festival in Term 3
- A Year 4/5 trip to the Suter Gallery
- A Year 6/7/8 trip to the Science Roadshow
- Our Year 6 - 8 camp at Marahau in Term 4
- The Moutere Hills Athletics Day in Term 4

Moutere Hills Athletic Day

Our day at the Moutere Hills Athletics on Thursday 16th November would have to be one of our best on record. Congratulations to the students for these results:

- Peace Shield - fastest student in the school 200m - Joel Stobie 1st place
- RSA Cup - second fastest student in the school 200m - Winston Palmer 1st place
- Taylor Martin trophy - fastest girl in the school 100m - Safia Armitage 2nd place
- Junior baton relay - Jensie Beloe, Xavier Johnstone, Hunter Manuge, Gus Stobie - 1st place
- Senior baton relay - Safia Armitage, Matt Ellis, Winston Palmer, Joel Stobie - 1st place
- Junior ball relay - Jensie Beloe, Reef Fenn, Alfie Forster, Thomas Genet, Xavier Johnstone, Hunter Manuge, Elysa Orchiston, Gus Stobie - 2nd place
- Senior ball relay - Safia Armitage, Luc Burer, Matt Ellis, Florence Forster, Daniel Hall, Lucy Johnstone, Winston Palmer, Joel Stobie - 1st place

(The ball relay results combine, meaning we share the cup with Māpua School as the results were reversed between the junior and senior events).



- Moutere Memorial Shield - Highest average points for school, 10 years and under sprints - 1st place
- Challenge Shield - Highest average points for school, 10 years and over sprints - 1st place



Moving on

Sue Shand, our Year 2/3 teacher has been appointed to the position of Deputy Principal (junior school) at Lower Moutere School. This is a well earned position and our loss is most definitely Lower Moutere's gain. Sue has been committed to Tasman School for an extended period of time and I thank her on behalf of the school community for her continual dedication to our school. We will farewell Sue at the end of this academic year.

We currently have space for new entrant enrolments. If you are interested in visiting the school please make contact with the office to schedule an appointment.

03 526 6818

office@tasman.school.nz

Carols at

Tasman
CHURCH

When: 5:00pm, Sunday 24th

December.

Where: 6 Williams Road, Tasman.

What: Sing along carols. Hear the Good News of Christmas. Bring and share dinner.

Invite your family and friends, and bring a meal to share!

Tasman Store - Lance and the Store team

Confucius said that a man without a moustache is a man without a soul and while that is certainly debatable, "Movember" was in full swing at the Tasman store! Our participants had plenty of soul and their moustaches quickly become their most valuable asset. All donations towards men's health are gratefully received, even AFTER November! Scan QR to donate:



The Grind Coffee is roasted fresh on site, and available to purchase in every form imaginable.



Also

Milk is delivered on Saturdays, Tuesdays and Thursdays and baked delectables keep the ovens working.

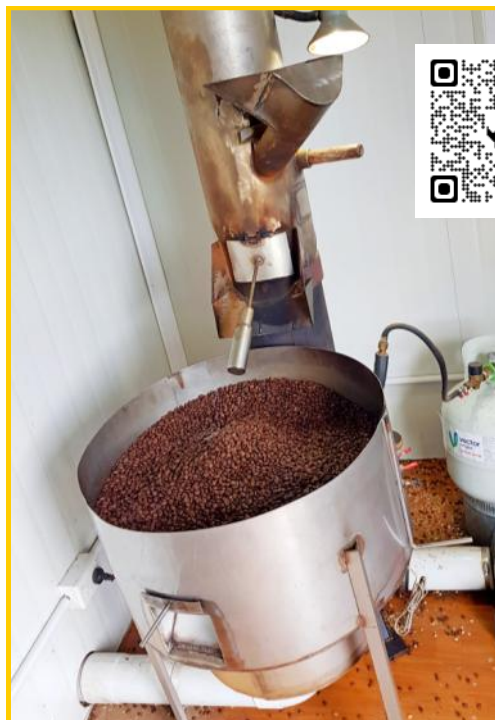
Fresh Strawberries and Boysenberries are coming into season and will be available soon.



**After Christmas we will be opening
7 days a week.**

We look forward to seeing you this summer, and wish you and yours a merry and safe festive season.

From the Tasman Store team.



Another fine roast at the Grind!

TASMAN BAY CHRISTIAN SCHOOL



Enrolling now for 2023 and beyond...

Come and join us!

About US

Our mission at TBCS is to provide a Jesus-centred primary education for students from Year 0 to Year 8. We cultivate academic growth, support social development, and nurture spiritual enrichment for all students. Our holistic curriculum nurtures the whole child, equipping them with knowledge, character, and a passion to positively impact their communities and the world.

Advantages of an education at TBCS

Transformative faith-based education and well-resourced environment equipping them for success in a changing world



Dedicated team that fosters spiritual growth and character development



Free bus transport for whānau living from Riwaka to Richmond (including Motueka and Māpua)



GET IN TOUCH

Contact Us

027 424 9393

office@tbcs.school.nz

www.tasbaychristian.school.nz or find us on Facebook

Find us on Facebook



www.tasmancommunity.org.nz

Tasman Organic Food Club

- Steve Richards

Did you know there is an organic food club in Tasman?

It operates from a small building in the Jester House car park and currently offers a basic range of organic dry goods. Think flours, sugars, dried fruits and nuts etc. The club is currently looking for new members.

To join please contact Tasmanofc@gmail.com



Great food at great prices



Home of the Tasman Organic Food Club

RUBY COAST NEWCOMERS SOCIAL GROUP

WHAT IS IT? An easy way for Tasman and Mapua newcomers to meet and socialise, make new friends and learn about the area from other "recent" locals.

WHERE? We usually meet at the Tasman Store and Cafe

WHEN? The last Friday of each month from 10am to around midday. An email reminder is sent each month.

There is NO OBLIGATION to attend!
Just come along when it suits you.



We also host occasional ad hoc "bring a plate" social get-togethers.

CONTACTS:

Vivien on 03 5266707 or 027 5266707

Or

Richard on 027 5266700
rscllement49@xtra.co.nz

Motueka -Richmond Bus

Tuesdays and Thursdays

Motueka i Site -Richmond via The Moutere Highway

Saturdays

Motueka i site-Richmond-via Mapua

Both services leave Motueka i site at 9.30am picking up booked passengers along the way. Our driver then waits for you in Richmond and returns to i Site again by 3pm.

Fare \$6 each way

Pick ups from home address can be arranged.

Bookings essential Ph Motueka i Site - 03 528 6543

For group and charter bookings please email marketing.ntcct@gmail.com



Wakefield Community Bus

Tuesdays :Wakefield-Richmond \$5 return

leaves Wakefield by 10am -returns by 1.30. Pickup from home available. Booking essential by phoning 0226822373

Mapua Willing Wheels

Volunteer driver service in their own vehicle. Fare is based on 95 cents per KM. Phone 0226822373 for more info or go to www.ntcct.org.nz



Jester House Cafe

- Steve Richards



Who are these crazies? And who would have thought that when we moved to Tasman in 1991 the Jester House would get to where it is now ?

We have just celebrated 32 years of this craziness and what a blast it has been and continues to be. We are as pleased now, to welcome you, as we were all those years ago.

Thank you to all our guests, past and present for making our business the success that it is, and making the journey such fun.

Christmas is coming and we're taking orders for Christmas cakes for pick up on or before the 22nd of December. These delicious 1.5 kg cakes are moist and packed with fruit. To order yours email Judy@jesterhouse.co.nz or phone **03 5266742**.

As usual Jester House will be closed for the summer madness. Our last day for 2023 is **Friday 22nd December** and we reopen on **Friday 2nd February**.

We wish you all a very Merry Christmas and a wonderful and prosperous New Year.

Ngā mihi nui
Judy and Steve and the team.



Nelson Tasman Community Transport Bus



- Anita Parkes

Community Connections

The Nelson Tasman Community Transport Trust are on a mission to provide efficient, accessible and sustainable passenger services in the Nelson/Tasman regions particularly for rural settlements. We have:

- A bus route between Wakefield and Richmond, via Brightwater and Hope on a Tuesday. (Tapawera connection trial coming soon!!!!)
- A car on demand service running in Māpua 'Willing Wheels' (*see page 10*)
- A coastal bus via Tasman and Māpua from Motueka to Richmond and return on a Saturday.
- A Moutere Bus from Motueka to Richmond via Lower and Upper Moutere and return on a Tuesday and Thursday
- Private charters for school, community and business groups and events

For more on how to use these services, please go to our website here or Facebook page or email our coordinator Anita Parkes -

marketing.ntctt@gmail.com





VOLUNTEER DRIVERS AND TRUSTEES NEEDED

Can you help us to help your community?
No special licence required

Ph: 0226822373
email: marketing.ntctt@gmail.com
www.ntctt.org.nz

Nelson Tasman Community Transport Trust aims to create affordable, accessible and sustainable transport options for Nelson and Tasman communities





Wanda Tait

- by her daughter Adi Tait

Local woman Wanda Tait has been living in Tasman village for the last five years, having spent most of her adult life in Redwoods Valley and Nelson.



built in front of Doug's parents' place. His brother Alan had his orchard in Marriages Road and his youngest sister Audrey had an orchard with her husband Ray Kitto in Bronte Road. Giff's parents Peter and Ivy Tait eventually retired from Marriages Road to Ruby Bay, and with Giff, Ross and Donald, bought the land that is now the Tait Street subdivision.

Orcharding connections

She's no stranger to this area however, having grown up in Dominion Road. Her parents came to the area from Wellington in the 1920s, to seek their fortune in the blossoming orcharding industry. Her father, Frank Archer, later went on to become the president of the NZ Fruit Growers Association and Chairman of directors of the Cawthron Institute.



Mahana, Mapua and Tasman schools

Wanda went to Mahana School with her three sisters and eventually became a teacher herself. She would head off to work on her (un)trusty James 2-stroke motorcycle from Dominion Road to her first teaching assignment in 1953, at Tasman School. There she taught a class of 45 children aged five to eight, which included present day locals Colin Rush and Richard Easton!

Extended orcharding families

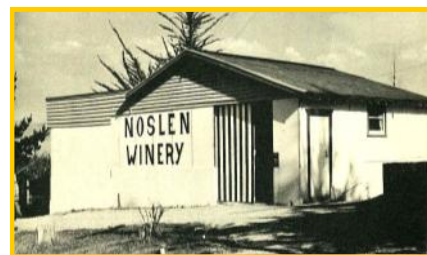
It was during these years that Wanda met Gifford Tait, a local boy from a Marriages Road orcharding family. Giff's three brothers and a sister all went into orcharding, as did Wanda's sister Barbara and her husband John Newton, in Kina on Cliff Road. The two eldest brothers, Ross and Donald, bought an existing orchard in Harley Road - their packing shed is now Darryl Frost's Ceramic Gallery, and Ross's place opposite is still owned by his widow Nola.

Donald eventually bought an orchard in Kina from the Morris family, where Kina Beach Vineyard now is.

Coincidentally the old schoolhouse accommodation now on the property used to be right next door to where Wanda and Giff raised their family in Redwoods Valley.

Giff's sister Doreen and her husband Doug Blundell lived for a time opposite the Tasman Store in a house they

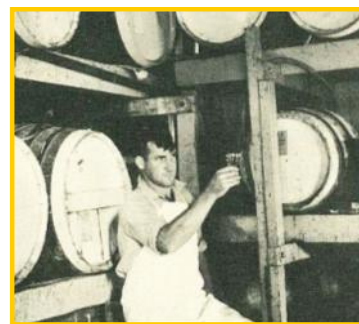
After Giff died in a tragic car racing accident at Tahunanui beach in 1967, Wanda carried on the business until 1981. After many new owners including DB and Heineken, Redwood Cider Co as it is now known, continues with its flagship Old Mout Cider, originally produced by Wanda and now sold throughout the world!



Family returns to its roots

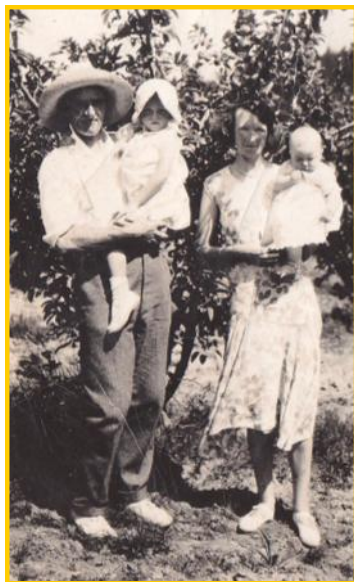
In 2008 Wanda's daughters bought a 93 year old homestead in the village next to the original local store and petrol station (now 'Jointworks' -see historical info panel at Jointworks). Coincidentally Giff's youngest brother Alan used to own the home as accommodation for his orchard workers.

Returning to the area where it all started, in 2019 Wanda moved to a small cottage on that property, to be closer to her daughter, grand daughter and great grandson, all four generations now living there.



Giff Tait at Noslen winery c. 1963

After having sold the winery in 1981, Wanda has had a successful career as a multi media artist, painter and Wearable Art participant. The Nelson Suter Art Gallery has one of her works in their collection. Alan Tait, Audrey and Nola still live in Tasman and Wanda is the oldest at 91. She stays active in her garden and still has weekly get-togethers with her three sisters. A true Tasman local!



Maisie Archer with her father Robert Couper and two children Barbara and Wanda, Dominion Rd c. 1934

Mill Point Site Recovery Project

Kina Beach Road - Tony Pearson

With some additional help from a couple of Marlborough visitors we managed to get 100 Ribbonwoods planted along the Tasman Stream coastal edge, in one VERY satisfying session – a great team effort – thank you David Easton for the 'eco-friendly' cover guard contribution AND the instruction session on how to assemble them!



We followed this up next session with a good planting of Cabbage trees in the swampy areas and we hope both these new plantings will be better suited to the pretty challenging conditions they need to cope with.

Musselling In

Our 'regular supplier' **Talleys** kindly contributed a couple of very large skips of mussel shells to top up and extend paths. And Richmond Hire, at competitive prices, together with a funding commitment from **TACA**, supplied a **Vermeer mini loader** for Mike Harvey to spend a busy morning shifting a very large quantity of the shells around the

site – at least to those places that the Vermeer could reach – "cos in fact it ain't so mini" !!



Thanks Mike, a great job that has saved hours of backbreaking manual labour.

Manual grunt

However our last couple of sessions have been down to good old manual labour –

- Spreading the shells to the narrower areas of track – a task taken on with enthusiasm by David Short on his return from his European adventures
- Removing dead and broken trees and branches from the more mature areas
- Weeding and spraying around the plantings
- Vivienne and Gillian tackling several very extensive honeysuckle vine growths that have spread into the trees – virtually unseen at ground level but a veritable canopy when one looks up

Staying in control

We now realise that our original flax plantings were much too close to the paths. Janet, Audrey and Tracey have an endless task ahead, keeping those enthusiastic growers in check. They've also very successfully virtually banished gorse, broom and pampas from the site.

The whizzer team of Charles and Mike have been kept busy with the weed and grass growth. Thomas continues to provide youthful energy when 'grunt' is required as well as monitoring our traps and I, as management, keep them all under control!

Join us!

Our last working bee of the season is at the end of November and then we shall break for the summer for a few months.

Have a good holiday over Christmas and think about joining us in the New Year – you will be made welcome by a great team.

Tony Pearson – Working Bee leader -





Experiential Learning Inspiring Positive Change

- Bree Arnott

The breadth and depth of the programming here keeps us busy! A highlight statistic this year has been the pass rate for our students on NCEA assessed programmes, with 99% for Māori and 98% for Pākehā – it's great to see that our programming helps all students to succeed.



Students on the Ignite Programme from Motueka High School

This year we worked with tamariki as young as five on our school programmes, through to adults on our community programmes. Programmes run from a few hours in length to running right across three years! We provide programmes for students who are struggling to engage at school, and those who are looking to extend their leadership skills outside of the classroom.



Manaaki Tāpoi (Cultural Tourism) students practice mau rākau on the beach

International Students

We have enjoyed running our first ExpedNZ programmes again this year, welcoming students from USA as part of their global learning initiatives at school. This is a social enterprise model for Whenua Iti, with the profit from our international programming redirected into a fund to support our community programming which helps locals access the benefits of the outdoors. The cultural exchange and learning on these programmes is pretty special!

Providing PLD for local teachers

It has been a highlight this year to work with the local Kāhui Ako to support their cultural competency in the classroom through Professional Learning and Development. This culminated in a waka journey in the last school holidays with Waka Abel Tasman. For teachers interested in accessing these experiences talk to your local Kāhui Ako as to what is coming up next!

Summer Holiday Programmes

We have holiday programmes running this summer for ages 7-18 yrs to provide fun adventures in the outdoors for tamariki, that help build confidence and new friends in a safe, supportive environment.

The new Adventure Leadership offering can also gain students L2 NCEA credits, and some can count towards the Duke of Edinburgh's Award too. Head online to enrol soon via our website, right. Thanks to everyone, MYD, Lotteries and Rātā Foundation for their support.

Noho ora mai rā.

We look forward to seeing you out there!
info@wio.org.nz www.wio.org.nz



Tasman Golf Club

128 Cliff Road, Kina Beach

Green fees \$30

Students half price

Concession Books available

Membership options range from just \$90

Children under 12 play for free

Come along on a Friday morning and enjoy a social 9 holes with a fun group of both beginners and experienced golfers

Tee off is 9.30am, every Friday

**Twilight golf 5.15pm every Thursday
only \$10**

For more information
 Contact Lyndal
 at The Tasman Golf Club

Ph 03 526 6819

**Email: teeup@tasmangolfclub.com
www.tasmangolfclub.com**





Kua powhiri koe ki
 You are invited to
 Tasman Community's



BIG

Family Picnic

March 2nd 2024
 11am - 3pm
 LEH Baigent Reserve

Family Fun Day
kids' / Family activities /
Music
Community BBQ to use.
BYO






Postponement day 3rd March



Meet your local artists on the



RUBY COAST ARTS TRAIL

Jane Clark
Tony Clark
Peter Copp
Darryl Frost
John Jepson
Lauren Kitts
Sue Newitt
Lynn Price
Maureen Ryan
Nicholas Duvall-Smith
Jane Smith
Graeme Stradling
Adi Tait

FIND THE YEAR ROUND SELF GUIDED MAP AT:
rubycoastsarts.co.nz
facebook.com/RubyCoastArts

Add to your Summer calendar -
OPEN STUDIOS WEEKEND
24-25TH FEBRUARY 10am - 4pm

From the editor's desk

- Simon Thomas

Hello and welcome to my first edition of Tasman Times.

I've lived in Williams Road for 20 years and cannot think of a better area in which to have spent that time. Sun, sea and snow—it's a special place. Once upon a long time ago, my children literally took to water skis one morning and snow skis that same afternoon. Magic.

You may know me from an earlier life at Moutere Hills Vineyard which we established way back in 1995, or from helping sell houses at Summit Real Estate more recently.

Now, 're-purposing' has seen me take up a weekend role at Mitre 10 Motueka, which may just be the most enjoyable and certainly most stress-free job I've known.

And now I'm editing Tasman Times which, thanks to the efficiency of our wonderful contributors, has been a much more pleasurable experience than I had expected!

Enjoy this edition and please get in touch if you have ideas for content or comments in general.



sim.thomasnz@gmail.com

T.A.C.A.

The Tasman Area Community Association

TACA was established in 1989 with the purpose of "Protecting and enhancing the well-being of the residents and the natural resources of the area".

Members have the best interests of the community at heart and meet on a regular basis to discuss local issues and arrange community events. The Tasman Times reflects those discussions and events, twice yearly.



Who is T.A.C.A.?

Hamish Rush	Chair	027 406 0133
Greig Caigou	Secretary	027 434 7567
Mary Lithgow	Treasurer	021 456 685
Steve Richards		022 163 4135
Swantje Melchoirs		021 182 2042
Richard Clement		027 526 6700
Jon Taylor		027 246 5045
Michael Markert		022 389 2240
David Short		021 222 5066

Tasman Church

- Johann Vorster



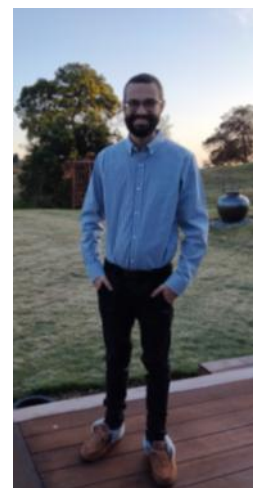
Tasman Church has recently seen a handing over of the leadership, with Pastor Greig going into a well-earned retirement. It takes no less than two men to even try and fill his shoes. Those two men are Simon Cheong, and Johann Vorster.

Simon Cheong is an entrepreneur, a husband to the wonderful Bridget, and father to four beautiful children. He found himself and his family stuck inside New Zealand when the lockdowns struck a few years ago; a rather abrupt end to a world tour. As it turned out this wasn't a bad thing, however, as the glory of the Tasman area soon convinced the Cheong family to make a home here.



Working alongside Simon is Johann Vorster. Johann, his dear wife Sharelle, and their three little ones recently arrived from Australia. It took a few weeks for Johann to emerge through the sheen of ice which had formed around him, but once he did, he realised that Tasman is actually quite sunny, and winter does, eventually, end.

Drop by and say hello to the two new pastors at Tasman Church.



T.A.C.A. Meetings

Everyone is welcome to attend. Meetings are held on the last Thursday of each month, in the Tasman Church at the bottom of Williams Road, Tasman. There is no meeting this December.

NEXT MEETING

Thursday 25th January 2024
7.30 pm
Tasman Church

If you would like to join our email database to learn about events and news that are relevant to Tasman/Kina, please simply email swantje.littleswan@gmail.com with your name and 'TACA email database' in the subject line.

T.A.C.A. Online

Don't forget that this and earlier editions of Tasman Times, complete with clickable links to emails, websites and to our Facebook page, can always be found on our website page, below:

