

TRAILER MOUNT
MHP15/44

Snorkel
ELEVATING WORK PLATFORMS

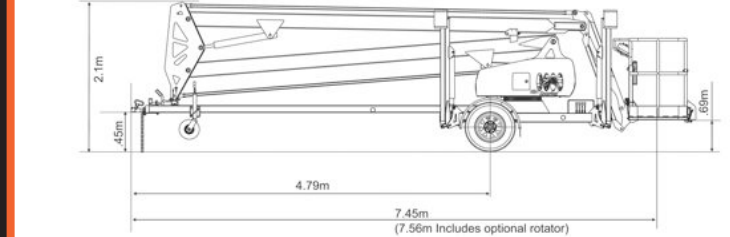
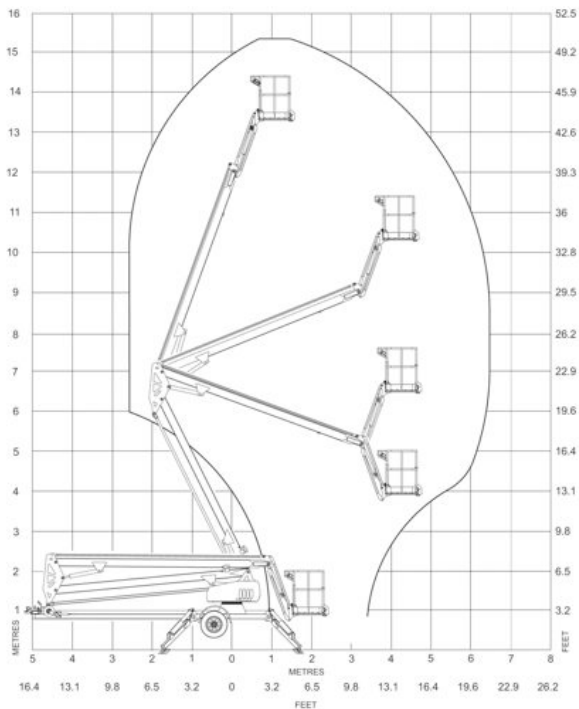
**THE SNORKEL
ADVANTAGE**

**BUILT TOUGH
EXCELLENT SERVICEABILITY
LOW OWNERSHIP COSTS**



www.snorkel.com.au

TRAILER MOUNT MHP15/44



SPECIFICATIONS

| | | |
|-----------------------------------|--|-----------------------|
| Working height | 15.2m | 50' |
| Platform height | 13.4m | 44' |
| Rated load (standard) | 227kg | 500lb |
| Rated load (with rotator) | 200kg | 440lb |
| Platform size | 1.25 x 0.78 x 1.07m | 4' 1" x 2' 6" x 3' 5" |
| Platform construction | Steel | |
| Platform levelling | Mechanical | |
| Boom type | Articulating | |
| Horizontal reach | 6.45m at 8m | 21' 1" at 26' 4" |
| Max wind speed 12.5m/s | 45kph | 28mph |
| Turntable rotation | 540° non-continuous | |
| Power source (std.) | Gasoline engine 5.5hp | |
| Hydraulic system | Proportional electro/hydraulic | |
| Stabilisation | 4 independently operated hydraulic outriggers with safety interlocks | |
| Stabiliser footprint (max.) | 3.7 x 3.6m | 12' 1" x 13' 9" |
| Standard colour | Snorkel orange base and covers, white turret and booms | |
| Transport height | 2.1m | 6' 10" |
| Overall length | 7.45m | 24' 5" |
| Overall width outriggers extended | 3.7m | 12' 1" |
| Overall width outriggers stowed | 1.77m | 5' 9" |
| Tyre size | 185 R15 | |
| Brakes | Hydraulic disc | |
| Maximum towing speed | 80kph | 50mph |
| Maximum rated axle capacity | 2000kg | 4409lb |
| Weight (standard model) | 1500kg | 3306lb |
| Insulation rating | Nil | |
| Trailer tongue weight | 90kg | 198lb |

Danger: Standard models described in this brochure are NON-INSULATED and do not provide electrocution protection from contact with or close proximity to energised conductors which is pointed out on the decals and placards attached to the machine.

Products in this brochure comply with relevant ANSI and Australian Standards. This literature is for illustrative purposes only. Consult Operating/Maintenance and Parts Manuals for proper procedures. Specifications may vary and are subject to change without notice.

STANDARD FEATURES

- Proportional speed control
- Versatile jib boom (+70° to -70°)
- Heavy duty tow coupling
- Heavy duty jockey wheel
- Hydraulic disc brakes
- High strength steel boom and base construction
- Reliable gasoline engine with optional Bi-energy power
- Steel platform - 2 man capacity
- 600VAC rated wire to platform
- Hour meter
- Lockable hinged covers
- Outrigger/boom interlocks
- Independently operated hydraulic outriggers with pot hole protection

ADDITIONAL OPTIONS

- Manual drive
- 360° continuous rotation turntable
- Flashing light
- 110/240VAC GFCI power to platform
- Platform rotator
- Lifting lugs
- Automatic stabilisers
- 10.9m cut out switch
- Alternative power options:
 - Diesel engine
 - 24VDC battery power
 - 110/240VAC motor & pump
 - Combinations of the above with gas or diesel to give a bi-energy power source

Snorkel
ELEVATING WORK PLATFORMS
DEALER STICKER

AUSTRALIA

2/26 Redfern Street
Wetherill Park, NSW 2164

Phone +61 2 9725 4000
Fax +61 2 9609 3057

NEW ZEALAND

36 Bruce Road
Levin, New Zealand

Phone +64 6 3689 168
Fax +64 6 3689 164

USA

2009 Roseport Road
Elwood, KS 66024

Phone 785 989 3000
Fax 785 989 3070