

June 2026



**AHT Competition Night **Weds 24<sup>th</sup> June** -  
measure up your trophies from last 12 months.**

**Remember you must have been a paid-up  
member at time of taking, and when presenting,  
your trophy or photos**

If you have a trophy, to reduce workload, please try and get it measured  
**before the night.** Email Warren for an appointment at his base @ 35 Leicester  
Street Stoke: [plumstone@xtra.co.nz](mailto:plumstone@xtra.co.nz)



**THIS  
MONTH**

**EDITORIAL**

**2026 Branch  
AGM**

**&**

**AHT  
Competition**

**6.30 pm Wed  
24<sup>th</sup> June  
McCashins  
Main Road  
Stoke**

**Molesworth  
for Meat**

**Range  
Matters –  
Zuppa Shoot  
Results**

**AHT Rules  
Reminder**

**Old School**

**MEMBER  
BENEFITS**

**CONTACTS**

**&**

**IMPORTANT  
LINKS**

# Editorial

Hullo Hunters and Shooters,

The big events that are coming are our annual AGM and Competition night combined. The AGM is an important part of the club's calendar and the formal/legal administration of the Branch. While many, no doubt, prefer not to think about it, this really matters and coming along and supporting the Committee and hearing the annual reports is important.

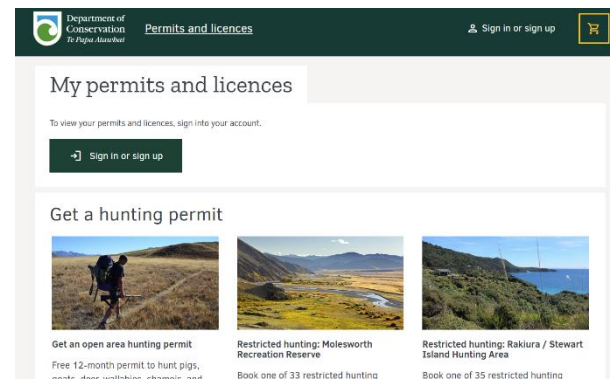


**If you think you can help support the club beyond being a member, then talk to Greg about joining the Committee, it's as strong, relevant and useful as its members can deliver, and more hands make for better outcomes.**

Rumour has it there will be some mighty trophies presented again this year so get along and see how everyone has been doing in terms of antlers horns and tusks, as well as photography. Entry link for this will come in your email, so keep an eye open. As noted throughout the Echo you can take load off our Douglas scorers by getting your trophy measured in advance of the night.

Over the last few issues, we have had some great hunting stories sent in but a bit short again now....so either everyone has stopped hunting or they aren't taking any pictures! C'mon hunters, a few pics and captions (you don't have to write an essay if you don't want to) is all we need to keep the blood flowing.

DOC continue to review and refine the hunting permit system. **Please make sure that you have your open permit current.** There will be more useful information appearing on their website over time and other restricted and ballot block areas will be updated during the rest of this year. Note the Molesworth roar blocks for 2027 will be a ballot for the first time. But key to continued support for public land recreational hunting is having an open permit as it demonstrates interest and value to each individual signed on. I'm happy to take any email questions on this.



Below are Branch contacts, in future these will always be at the end of the Echo for your reference.

## Key Branch Contacts

President Greg Couper [gregc@nzdanelson.co.nz](mailto:gregc@nzdanelson.co.nz)

Secretary Dave Woods [dave@nzdanelson.co.nz](mailto:dave@nzdanelson.co.nz)

Membership Secretary & Events Carina Jackson [carina@nzdanelson.co.nz](mailto:carina@nzdanelson.co.nz)

Happy and Safe Hunting – **Richard Wells**

Editor Contact [richardw@nelsonnzda.co.nz](mailto:richardw@nelsonnzda.co.nz)

# AGM and AHT - Wednesday 24<sup>th</sup> June

## Starting from 6.30pm

2026 Annual General Meeting

and then

### AHT & Photo Competition



**Trophies, beer and bulldust - get along to our annual AHT Night and see who scored big this year. You don't have to be in the competition to enjoy this night – bring a friend and family. Pizza and chips are on us!**



**When and Where:** Wednesday 24<sup>th</sup> June from 6.30pm AGM and 7pm AHT @ McCashins Brewery – Main Rd Stoke



# Molesworth for Meat – *by Richard Wells*



Slow and steady on a very cool morning, here gaining height is everything to spot animals, plan your stalk and get the upper hand. As usual, we are carrying pretty big packs, largely empty, in the “confident hope of a miracle”!



Finally, 4 hours and 1800 feet later.....we now have the high ground above our deer. Time to plan the final several hundred metres into dead ground. Plenty of conversations on “how to.....” but as the day had warmed the anabatic uphill wind was our friend.....



Bingo....great stalking by Ros (left arrow) to get this close and bounce a wily old hind (right arrow) and her fat yearling who is equally dead and just out of pic higher up. They had no idea what was about to go down....



Ouch! that hurts!....saddled up and away with our meat, but a long way to go. Luckily there was some snow in the shady gully to wash up and refill water bottles before the slog out. This took 4 hours and was pretty taxing....but we were pleased to retrieve nearly all the meat off the two deer even though it did mean a quieter day for us the next day. We had spent some of our rest stops on the stalk in to assess best routes out if we were (hopefully) carrying a load, and this proved to be very sensible as once in the gully we couldn't assess the way forward to sidle out to a clear ridge. Going back the way we had come wasn't a great or popular option under load. Downhill is hard too, especially loaded up...plenty of rests meant no accidents...



Dinky little stag that wasn't interested in roaring action but was very fat (and standing there!) so gotcha! – just the job on day one.



Ros butchering amongst wasps and flies....Utes and water are awesome!



Stinky bigger stag but he's going under the knife too! More loads of meat below.



Over the course of two trips, we carried out about 85 kg of meat, all broken down and skin off, using a lot of muslin to keep it dry and cool. The big stag into mince (well done by Meat Solutions), the rest into better cuts plus some mince too. Even managed a few hearts and shanks. Thanks Molesworth.



# Range Matters - 2026 Zuppa Shoot

The Zuppa Shoot over the weekend, only Saturday went ahead as the forest was closed due to the bad weather, despite this we still managed to shoot Light Varmint 100 & 200 metres.

With an early start to beat the rain the day turned out not too bad, very minimal wind gave us a bit of a sneaky vertical and horizontal result - classic issue for the range. We had 7 shooters compete, two from Dunedin with the rest local Nelson shooters. In the tradition of the Zuppa (which means soup) shoot Graeme provided a scrummy soup and bread roll for lunch which was very much appreciated in the cold weather. Podium - Winner Ian Owen, followed by Greg C and Helen Owen. Well done!



A cold calm start.....



followed by “sneaky” conditions.....



Date : 30/05/2026  
Range: Nelson

S.I.

Title: 2026 LV ZUPPA Shoot  
Class: Light Benchrest - I

Name			W	A	B	C	D	E	Agg	GAgg	PN
Ian	S.I.	100		.185	.225	.231	.211	.140	.1984	1	
Owen	2004	200		.340	.691	.611	.454	.438	.2534	1	.2259 1
Greg Couper	S.I.	100		.330	.312	.325	.363	.331	.3322	3	
	1001	200		.517	.470	.893	.515	.603	.2998	3	.3160 2
Helen Owen	S.I.	100		.249	.423	.291	.545	.336	.3688	6	
	2005	200		.710	.589	.628	.385	.358	.2670	2	.3179 3
Graeme Smith	S.I.	100		.381	.364	.283	.292	.219	.3078	2	
	2013	200		.420	.988	.452	.597	.836	.3293	5	.3185 4
Carina Jackson	S.I.	100		.391	.315	.307	.524	.265	.3604	4	
	2114	200		.937	.576	.705	.291	.506	.3015	4	.3309 5
Michael Kidson	S.I.	100		.475	.333	.301	.287	.441	.3674	5	
	2106	200		.931	.771	.473	.953	.715	.3843	6	.3759 6
Warren Hitchcock	S.I.	100		.963	.606	.306	.444	1.504	.7646	7	
	2113	200		.702	.628	1.390	.869	1.550	.5139	7	.6392 7

Best Scores 100

A	I Owen	.185
B	I Owen	.225
C	I Owen	.231
D	I Owen	.211
E	I Owen	.140

SG	I Owen	.140 (Rec .065)
Agg	I Owen	.1984 (Rec .1812)

Best Scores 200

A	I Owen	.340
B	G Couper	.470
C	G Smith	.452
D	C Jackson	.291
E	H Owen	.358

SG	C Jackson	.291 (Rec .133)
Agg	I Owen	.2534 (Rec .1978)

# Be a Star!!!!



## Open Invitation to All Benchrest Club Members, NZDA Members, Guests or Anyone Interested

### “The Rimfire Challenge”

### Holiday Weekend (Matariki) 10<sup>th</sup>, 11<sup>th</sup>, 12<sup>th</sup> July

We will again be holding a Rimfire Benchrest Weekend over the Matariki Holiday.

This will be an open event – all comers welcome.

The programme will be as follows:

Friday afternoon - Evening 10 July commencing 2pm Indoor Benchrest Match

1 x single 1 x double

Saturday morning commencing 10am 5 Target Hunter Class match at 50m

Saturday afternoon commencing 1pm 5 Target Group Match at 50m

Sunday morning commencing 10am 2 International 25 Bull Targets at 50m

We would expect the weather to be cool with Packers Creek short of sunlight during the day

If our indoor shooters wish to be part of the event, we will accept entries for Friday only if desired.

We will have to pay for the use of the ranges as normal so the set entry fee is:

**Friday only \$15.00**

**Friday, Saturday, Sunday \$40.00**

We plan to hold a light supper on Friday evening, some finger food Saturday lunch time and a scone and cuppa on Sunday while final scores are being tallied. The Matariki Challenge Trophy will be awarded to the overall winner.

### Don't know the sport – but would like to?

This is a great opportunity to learn about our sport, In Benchrest we shoot from pedestals and sandbags (great for us old blokes) .22lr Rifles and subsonic ammo (very quiet and no recoil). Don't have the gear? – come anyway – we are happy to share our equipment. Just let us know so we can be prepared. We have a couple of club rifles available.

### Contact and advise entry to:

**Graeme Smith** PH. 03 5447138 TXT 027 5447139 or Email [lvhvbr@gmail.com](mailto:lvhvbr@gmail.com)

# When is the last time you refreshed yourself with our Ranges' Standing Orders?

**Always** be aware of and comply with our **Ranges' Standing Orders** – they are posted at the Ranges, but you should refresh yourself from our website:

Packers Creek – [Standing Orders](#)

Murchison Community Range - [Standing Orders](#)

[Friendly reminder regarding the bringing of guests to use the Packers Creek Range.](#)

You are welcome to bring along a friend/family member to be introduced to and use the Range. **But this should be on a “one-off” basis.** If your friend enjoyed it then they need to be encouraged to join our Branch and thereby properly support our Range. They should as it's a very good range! Constantly using Packers Creek Range as a non-member by “slipstreaming” is not allowed.

**If intending to using the Range always check the calendar on our website (or follow our Facebook page):**

[Nelson NZDA Range Info](#)

Range Use Etiquette - [Etiquette and Golden Rules Click Here](#)

## Packers Creek Range Access Reminder:

1. Check website for opening days and hours
2. Be at gate **before** 0900 hrs not after
3. All vehicles **must have** headlights on and conform to convoy (i.e. **follow** the duty officer in and out on Sharlands Road – these rules are set by landowner/operator and are compulsory
4. Ensure you have your membership card (fill in the logbook) and hviz & hearing protection
5. When it's wet up there, avoid driving on the grass as it makes the mower's job that much harder.

**Make Sure You Comply with Carriage of Firearms Law When Coming to the Range (and at all other times, of course)**

**Link to All Rules Here:**

[NZDA - Te Pureke Firearms Rules - Transport and Storage](#)

# AHT Rules and Entry Form

Trophy Competition Rules are based on the National Rules see here [National-Competition-Rules-2020.pdf](#) and Ethics



**Rules:** All Trophies will be taken by fully financial (i.e. paid up) members and in accordance with National rules of Ethics and Fair Chase [NZDA Ethics and Fair Chase Rules](#)

## NATIONAL ANTLER HORN TUSK, COMPETITION RULES

### GENERAL RULES - applying to all entries

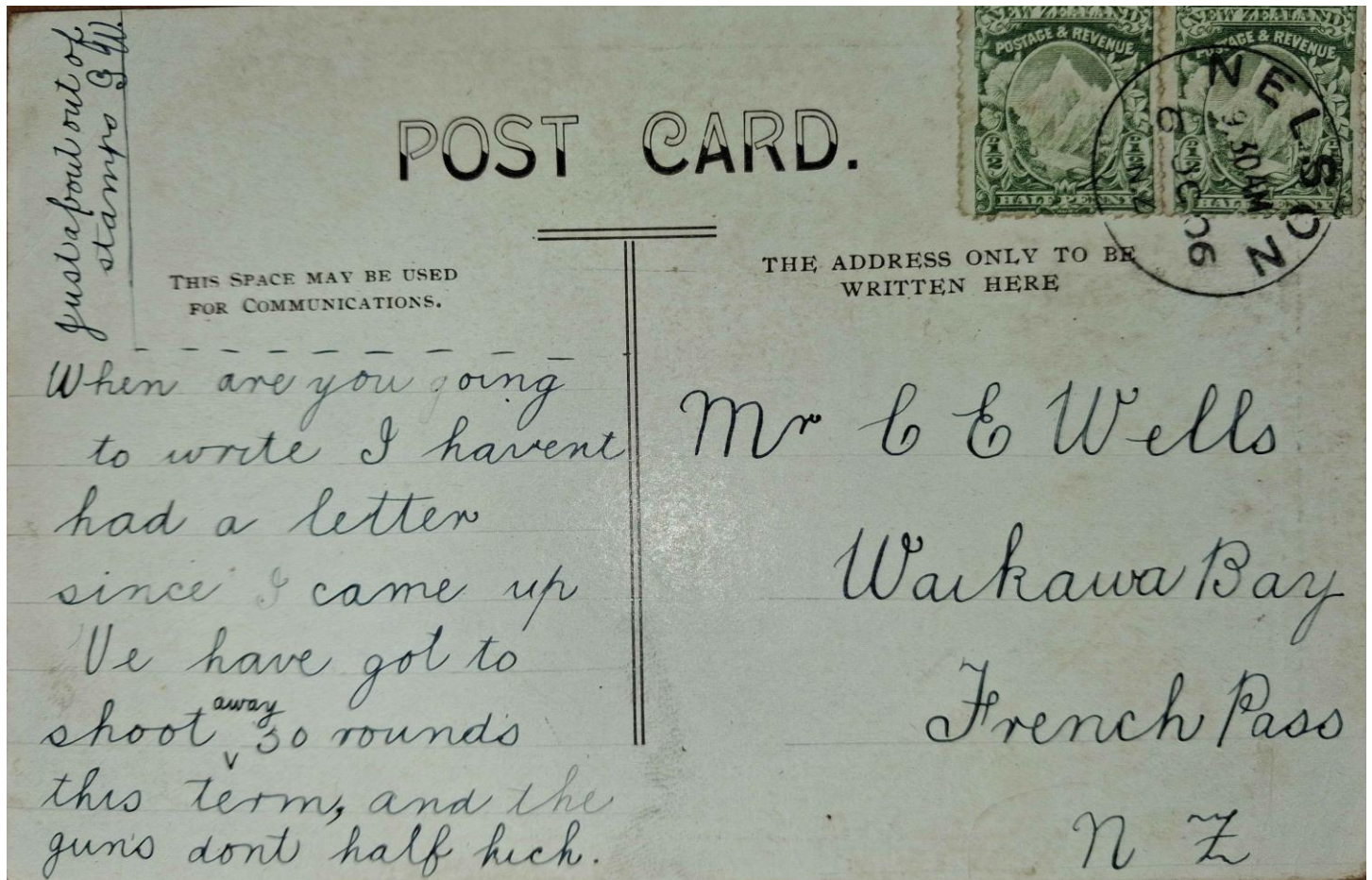
1. (i) Trophies obtained by a non-member or unfinancial member as determined by the Branch Constitution will not be eligible for entry.
- (ii) The competitions are open to all national life and full financial branch life, senior, junior, superannuant, student, endowment members of the New Zealand Deerstalkers' Association Incorporated.
- (iii) Registered eligible family members of the above are also eligible to enter.
- (iv) Entries must have been taken in accordance with the national competition rules.
- 1.2 Members must be fully financial at the time the entry was taken and at the time of the entry into the competition.
- 1.3 All entries must have been taken by the entrant in New Zealand during the year ended 31<sup>st</sup> May.
  
- 2 A (i) Definition of wild game animal: -  
Entries for all categories of Antler Horn and Tusk competitions be accepted from all feral self sustaining populations of game animals, whether these be from the acknowledged existing feral ranges of the animals or from new or satellite herds which have developed from natural spread, liberations or escapes.  
Escapees and animals taken with ear tags or evidence of previous ear tags or other identification markings are not eligible for entry into the Antler Horn and Tusk competition.
- 2 A (ii) Definition of Fair Chase: - Fair chase is the ethical, legal and sportsman-like taking of any free-ranging feral animal that has an unimpeded avenue of escape on both private and public lands.  
  
- 2 A (iii) Eligibility for National Antler, Horn and Tusk Competitions in relation to Fair Chase:  
Entries will not be eligible if A TROPHY FEE HAS BEEN PAID.  
Entries will also not be eligible for entry if any of the following methods of taking a trophy(s) are used: The animal: -
  - Must not have been taken in an enclosed area ie, behind deer wire or any such fence or fixture that impedes the animal's unrestricted chance of escape
  - Must not have been restrained ie, in a snare, trap, fence etc
  - Must not have been taken with the aid of a spotlight or use of night vision equipment
  - Must not have been taken with the help of a rifle mounted thermal imaging or night vision sight
  - Must not have been taken from an aircraft, powered vehicle or vessel
  - Must not have been coursed by dogs (with the exception of wild pigs).
  - Must not have been taken in a manner where animal behaviour has been intentionally influenced by the use of a powered craft

### Requirements:

- Trophies need to be well cleaned and fit to be presented ([get them measured before the night!](#))
- Late entries may not be accepted

Even if measured prior, the head must be present on night of the Competition to win a trophy.

# Old School



Bit of personal memorabilia and given my story on Warren's grandad last edition thought I could put up some more history. This postcard was written by my grandfather in 1906 to his parents in Waikawa Bay. He was boarding at Nelson Boys College and judging by many of his postcards home was pining for the farm and its work and pleasures (I know I did!).

However, he was obviously a part of Cadets there (as I was too) and "feeling the recoil" from presumably .303 rifles which may have been the single shot Martini - Enfields? I recall one of these being in a woolshed locally at French Pass when I was a boy (apparently to "shoot sharks" off nearby wharf!!) but they were a modification of the black powder Martini rifle and in use by various military units especially militias and irregular troops.

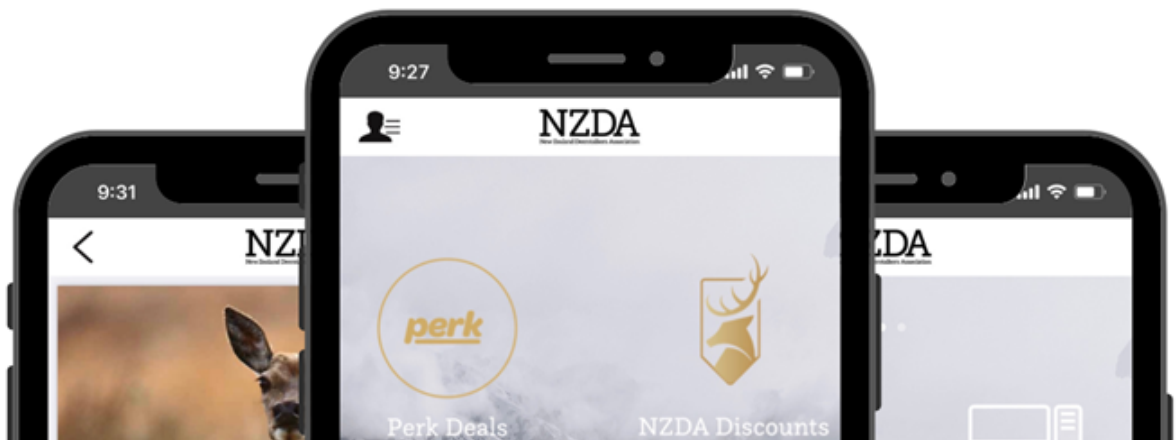


# Member Benefits – Know & Get Your Share!



## New App Update

Download or Update the NZDA Member App to Access Your Digital Membership Card



Save your membership fee by using the NZDA discounts - click here:

[NZDA APP Discounts and More](#)



SUPPORTERS OF NELSON NZDA HUNTS COURSES AND KAI RESCUE [MORE INFO HERE:](#)  
[MEAT SOLUTIONS](#)

# Contacts & Important links

## Key Branch Contacts

President Greg Couper [gregc@nzdanelson.co.nz](mailto:gregc@nzdanelson.co.nz)

Secretary Dave Woods [dave@nzdanelson.co.nz](mailto:dave@nzdanelson.co.nz)

Membership Secretary & Events Carina Jackson [carina@nzdanelson.co.nz](mailto:carina@nzdanelson.co.nz)

## Red Deer Lodge

- Information on costs and bookings of the Red Deer Lodge at Lake Rotoiti [Red Deer Lodge](#)
- Contact for Accom: [info@rotoitibaches.co.nz](mailto:info@rotoitibaches.co.nz)
- **Always remember to advise you are a Nelson member.**

## 2025 Branch Committee, Information & Contacts

- All details can be found on our refreshed website: [Nelson Branch Committee](#)
- Website [Nelson Branch NZDA](#)
- Facebook [Facebook Nelson NZDA](#)

## Other Key Links - **click on the orange.**

### *Advocacy and Access*

- NZDA National Association [NZDA](#)
- DOC Hunting Portal [Hunting Conservation Land](#)
- Fiordland Wapiti Foundation [Wapiti](#)
- Game Animal Council [GAC](#)
- Outdoor Access Commission [OAC](#)
- Walking Access NZ [WAMS Maps](#)
- LINZ Basemaps [MAPS Link](#)
- 141 Forest Access Information [141 Access and Permit Info](#)

### *Hunting Permits*

- [DOC Hunting and Permits Site](#)
- Fiordland [Wapiti Foundation Ballot](#)

### *Firearms and Safety*

- COLFO [COLFO](#)
- NZ Firearms Safety Authority [Te Pureke](#)
- Mountain Safety Council [MSC](#)
- MSC Videos on everything safety and hunting [Watch Videos](#)
- Avalanche Advisory [Avalanche Advisory Site](#)