

February 2025



Smiles all round as Greg delivers some Christmas cheer for those less fortunate in the form of beautiful venison mince to the Nelson Community Foodbank - in time for those summer BBQs. The venison came from a couple of spikers taken by Greg and Carina and the Meat Solutions processing cost was met by grant money from Lottery West Coast/Nelson/Marlborough.



Get your roar on! Club night at Hunting & Fishing with roaring competition!
More below and note **you must RSVP for this event!**

THIS MONTH

Community
Xmas
Venison

EDITORIAL

Range
Matters
Target Frame
Damage

Tahr Hunt

Beyond the
Dillon

Kahurangi
Goat Control

CLUB NIGHT

Roaring and
Rarin' to Go!

6pm **Weds**
26th Feb @
Hunting and
Fishing

Lighten Up

MEMBER
BENEFITS

Hunt & Fish
February VIP
Deals

IMPORTANT
LINKS

Editorial

After a solid break we are back in action. Hopefully you have all got through the holidays unscathed and are gearing up for the joys of autumn hunting.

There are big things afoot in the swirl of hunting and shooting politics with the appointment of a new Minister of Hunting and Fishing James Meager. Thanks, Todd McLay, for initiating this portfolio and we look forward to working with James!

Also, obviously is the review of many sections of Firearms Regulations and both NZDA National Office team and COLFO (whom we support every year with members' levy) are very focused on this opportunity for some more "sense and sensibility" in the law. Branches are encouraged to provide feedback. DOC are seeking submissions on a proposal to charge for access to some high use areas of public lands in New Zealand. The Editor (aka me) is happy to say that in his opinion the NZ citizen and taxpayer should not, and never, be charged for [access](#) to public land! You can submit here [DOC access-charging-consultation](#) For more news on the above check your email for the latest National Newsletter sent last week.



Roaring into the hunting season brings a sense of excitement, but also some responsibilities to both yourselves, and others. The key messages never change!

- 1) Be aware of the rules regarding permits [DOC Permits](#) and firearms use [Firearms Safety](#)
- 2) Plan carefully to maximise your enjoyment and safety [Planning Advice](#)
- 3) Be fit to reduce risk of injury and be able to go the extra mile [MSC Fitness Tips](#)
- 4) Be a smart hunter and use online tools if you need some pointers [GAC Training Videos](#)

This month's club night features a roaring competition such as we had in days of old, so clear your throat and get ready to give a few moans and growls! Note that this event requires you to RVSP to Carina who is working hard on making it a great night – so please contact her as per the information further down in the Echo.

We are definitely seeking more hunting stories please so if you have been out and about send 4 pics (well you can exceed that as I do) and a few words to increase reader pleasure!

As you can see from my own story, I'm not trying to keep any secrets (but you can!) and will continue to highlight Molesworth as a great hunting area with different blocks providing different degrees of difficulty and type of experience. I understand that the long awaited draft Molesworth Management Plan is due this month – we will have to be alert and ready to submit - to maintain and enhance the great hunting experiences available in this public Recreational Park – long may it continue!

Thanks, Coxy for update on goat control in Kahurangi – important work and we good to understand what has been happening even if I have circulated this a little late.

Don't miss the Hunting and Fishing Feb VIP specials for members! And a great Club Night there Wednesday 26th Feb. **Note the earlier start time, and you need to RSVP!**

Good Hunting & Safe Shooting - **Richard Wells**

Range Matters



2024-25 Nelson Outdoor Benchrest Summer Series Results For December and January

December 22nd 2024

Packers Creek 50m Group Match

		T1	T2	T3	T4	T5	AGG
1	Graeme Smith	0.169	0.446	0.172	0.245	0.217	0.2498
2	Graeme Vallance	0.204	0.372	0.369	0.299	0.569	0.3640
3	Ian Harper	0.396	0.466	0.640	0.303	0.733	0.5076
4	Tony Carter	0.327	0.386	0.735	0.539	0.760	0.5494
5	Michael Kidson	0.274	0.449	0.730	0.558	0.826	0.5742
6	Simon Cotton	0.563	0.631	0.493	0.606	0.599	0.5778
7	Anne Marie Kidson	0.521	1.671	0.384	0.460	0.382	0.6836

January 19th 2025

Packers Creek		100yds		Hunter Class Target			
		T1	T2	T3	T4	T5	AGG
1	Greg Couper	47	50.04	49	49.01	50.01	245.06
2	Carina Jackson	49	46	49.01	49.01	50.01	243.03
3	John Ronaldson	47	47.01	43	49	46	232.01
4	Graeme Smith	46	45.01	46	47	47	231.01
5	Tony Carter	47.01	49.01	48	41.01	45	230.03
6	Graeme Vallance	43.01	44	47	47.01	45	226.02
7	Michael Kidson	45.01	46	42	46	47	226.01
8	Simon Cotton	43	47	46	41	48	225.00
9	Anne Marie Kidson	42	44	41	49.01	45	221.01
10	Ian Harper	43.01	37	38	42	45	205.01

Summer Series to Date Placings

Points

				22-Dec	19-Jan	Total
Carina Jackson	8	7.5	8		9	32.5
Greg Couper	7	7.5	7		10	31.5
Graeme Smith	6	5	6	7	7	31
Graeme Vallance		4	5	6	5	20
Michael Kidson	4	2	3	3	4	16
John Ronaldson	2	3			8	13
Tony Carter				4	6	10
Simon Cotton	1	2	2	1	3	9
Anne Marie Kidson	5			2	2	9
Ian Harper				5	1	6
Simon Senior			4			4
Jan Newton	3					3
Donald Jaffray			1			1

Next shoot

9 February Nelson

Packers Creek Range

2 x 25 Bull International

Targets



If interested in using the Range always check the calendar on our website: [Nelson NZDA Range Info](#)

Always be aware of and comply with our **Ranges' Standing Orders** – they are posted at the Ranges, but you should refresh yourself from our website:

Packers Creek – [Standing Orders](#)

Range Use Etiquette - [Etiquette and Golden Rules Click Here](#)

Murchison Community Range - [Standing Orders](#)

Packers Creek Range Access Reminder:

1. Check website for opening days and hours
2. Be at gate **before** 0900 hrs not after
3. All vehicles **must have** headlights on and conform to convoy (i.e. **follow** the duty officer in and out on Sharlands Road – these rules are set by landowner/operator and are compulsory
4. Ensure you have your membership card and hiviz & hearing protection
5. Its wet up there, avoid driving on the grass

Any competition and event queries please:

call Graeme Smith - 03 5447138 or email lvhvbr@gmail.com

All Range Shooters Please Note!

Please when placing targets on the target holder **you must** staple them directly to the MDF or plywood backers **not the frame.**

Please ensure the target holder frame is not behind the target as catastrophic damage to the frame will occur from any centre fire round especially if concentrated in a group as per pics below.

The target frames are 11 & 15 years old now, replacing these will come at a significant cost to the club.

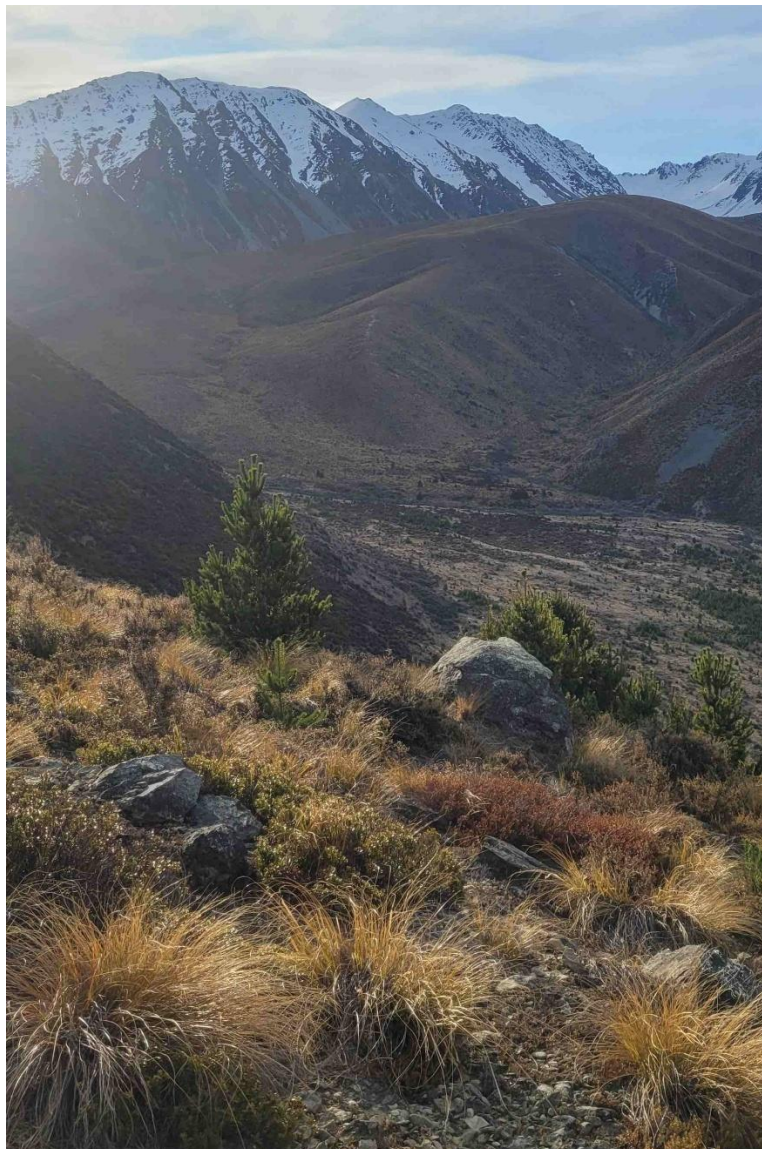
As can be seen in the pictures both of these frames have been repaired before.



First Tahr Hunt by *Chris Golding*

After a visit to the doctors last year to address one of my many aches and pains, the doctor summarised the issues as “Its just old age”. I haven’t accepted being old yet, which got me on to thinking about those things that can be a bit age limited. Hunting tahr was one of those things. So after a few phone calls with a good mate of mine and his eager son we decided on our first tahr hunt in the October school holidays. Spring weather as you all know can be hit and miss and as it turned out we had to do some last minute changes to miss the weather event that led to the Otago floods.

We had settled on a side creek in the Ben Ohau on the way into Mt Cook but when we got there, utes were parked at the roadside for all of the side creeks, except for one. It certainly wasn’t our first choice but the alternative was to drive somewhere else and miss some of this weather window. We left the road at 5pm and made our way into a river terrace we planned to camp on. By 730pm I had my first tahr on the ground and had the enjoyable feeling of relaxation knowing the mission was successful with 3 days hunting left . It nice young animal which features in the pie photo, very tasty. This was a good start and we were finally in bed by 11pm.



Looking up into tahr country (the quantity of wilding pines is a concern)

The walk in the day before was unseasonably warm and the next day was the same. We aimed to get high and look down on where we had seen some animals the day before. After a big slog we got into position to start looking. Our grand plan didn't work and by early afternoon we parked up under a rock to get some shade. We decided to sit it out for a few hours and then hope for some late afternoon movement. Sure enough, less than 200m below us a group of tahr popped out amongst the scrub. The youngest in the group was the nominated with the first shot. With his father along side him he tried to line up- I think he was waiting for the perfect shot because after about 10 minutes the bulls fed away and out of sight. I could see a frustrated dad as he had lined up them all and was itching to pull the trigger.



The youngest of the group with his first tahr

Not to worry, we regrouped and decided to walk back towards camp. The plan for the next day was in place and we decided to head further up the valley. To cut a long story short things were very quiet until later in the day when all of a sudden a group of 8 tahr appeared out of no where. This time we got into position quickly and the nervousness from the young hunter the day before were put aside. Another tahr on the ground.



Slow cooked smoked bbq tahr pies

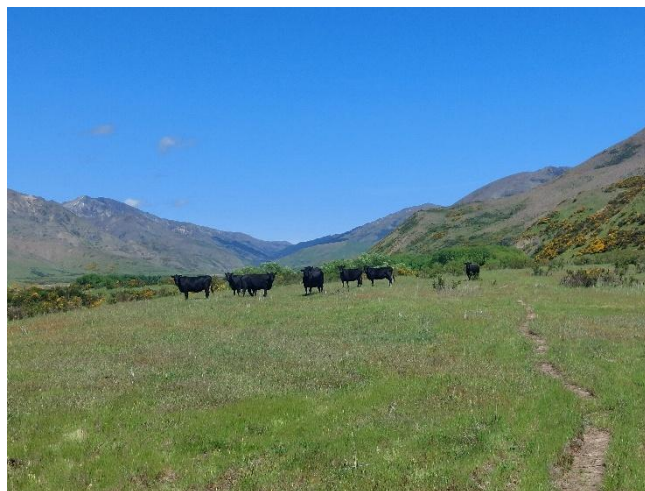
I'm mostly a solo bush hunter but enjoyed the hunt in open country with good company. We all managed to take an animal and I've been very pleasantly surprised at how the meat has tasted. Trip number two is in the planning.

Beyond the Dillon to Bullen Hills *by Richard Wells*

In the last edition of the Echo, we enjoyed Warren's story of his recent trip into the Dillon. Because of the goat competition, and some rumours I heard that the Bullen block in Molesworth (next and last block east of Dillon) had a lot of goats, I applied for that block and got it for November - before the competition ended. As I had high hopes regarding numbers, I thought a few mules to carry to ammo were in order! and talked to John who had joined us earlier in the year for a successful and fun trip into Big Bush. Luckily, he and partner Lee were keen to look at this part of the Molesworth Station – it's right in the southeastern corner against the curly Clarence River with the Hossack and Cloudy Peaks stations on the other side. You can't beat the horse and mule thing for river crossing and carrying gear.



My horse Sisco and the ride down the Clarence valley towards Dillon and the Bullen Hills – it took two hours and for a novice like me (my horse was on a lead from Lee's horse "Slider") almost as tiring as walking! But a great way to look at the country and have your weighty gear brought along for you.





Crossing the mighty (but quiet and clear today) Clarence before the Hossack boundary about 3 km downstream from Acheron confluence (there and back pics). Mules Muriel and Bruno doing the “donkey work” – they are tough and loyal servants.

It only took a few hours to get in although my legs didn't work too good for a while after...I hadn't ridden a horse in nigh on 55 years! But next day I was right as rain and we set off over the Bullen Hills with me on foot and John and Lee riding up through the saddle where the cattle pass through to the eastern side. Had a good walk all day and shot several goats, missed a pig and a fallow buck, as out of reach of my 22-250. Next morning we awakened to cold drizzle and snow looming and finding our horses had kicked the electric fence unit off, hopped the wire and headed for Hanmer! Luckily the gate was shut at Dillon fence a few km away and John saddled up the loyal and reliable mule Bruno (he loved being “Hero Horse of the Day!”) and tracked them down! Phew! They were all on rope tethers after that mischief! Plus, my steed tossed a shoe in the escape and had to be “re-booted”!





Looking up Stroat Creek to headwaters (where it is snowing) and to the right of scree hill the saddle giving access to the rest of the Bullen block on the Clarence side.



Looking north with Bullen Hills and head of Stroat Creek just visible to left. It's a big block!



Looking down on Stoat Creek with the low saddle through to Dillon stream and then looking up the Clarence towards the Acheron Road



Hard country east of Bullen Hills looking at the Clarence winding through The Hossack and Cloudy Peaks country on the other side.



Goats of many colours in Stroat Creek



Couple of reds out and about after daybreak - tested my nerves but were left alone....."hind sight" suggested this may have been overly generous!



Goat Cave above the Clarence on a very steep face. Higher above this four goats slowly emerged from a similar but smaller cave and all were all knocked over one after another.... but their tails stayed with them due to the terrain.

Trip Recommendations :

- It snows in Molesworth in November – be careful and prepared for bloody cold nights anytime
- Horses and mules are great in the hands of skilled people like John and Lee
- Mules are more loyal than horses....despite the press
- Have the necessary permits for hunting and horses
- Life is short! Go with great people! And enjoy yourself!
- There are pigs, goats, red and fallow deer, and chamois in this huge, awesome block – give it a go!

DOC Goat Control in Kahurangi NP *by*

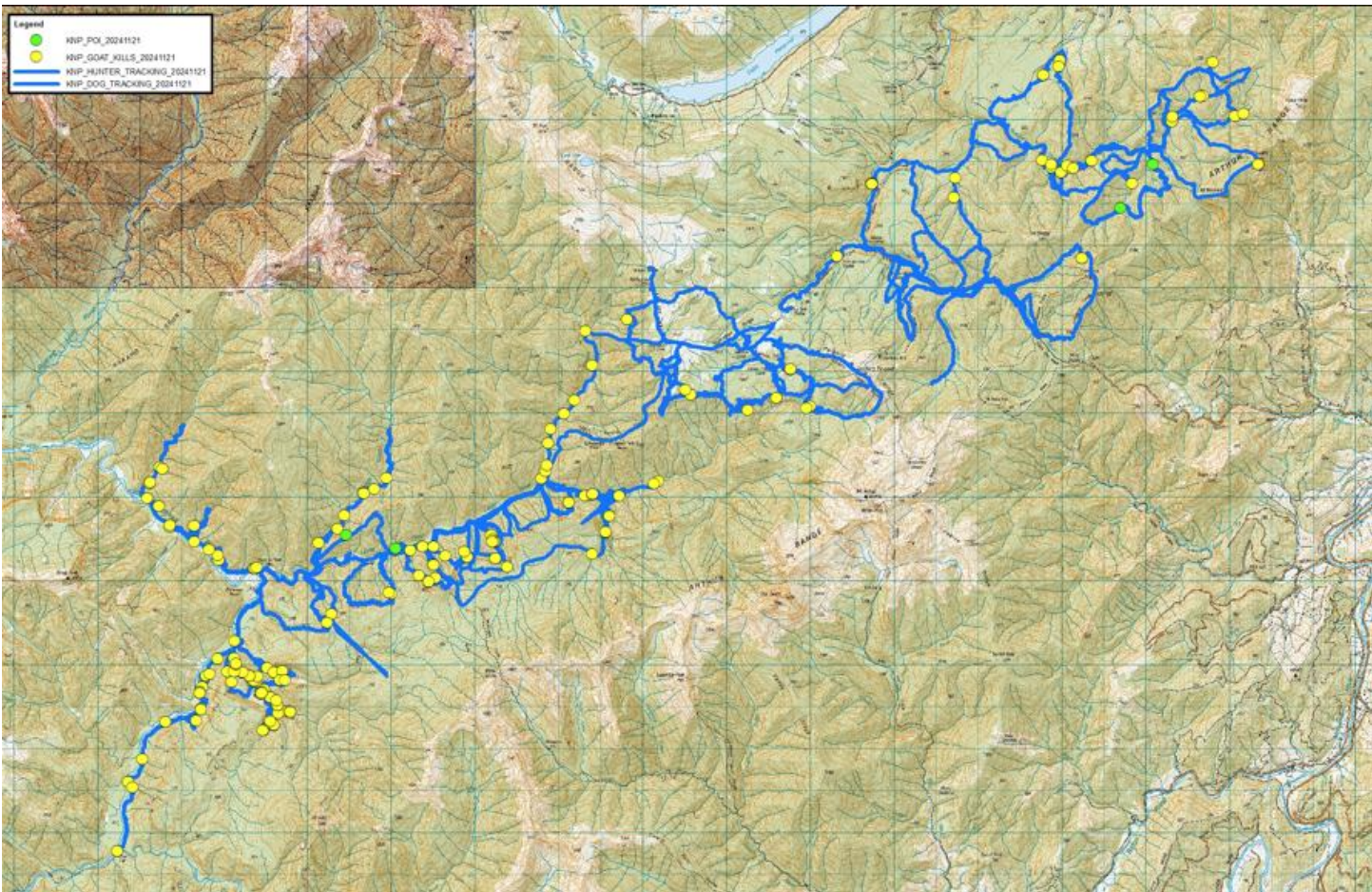
Ian Cox



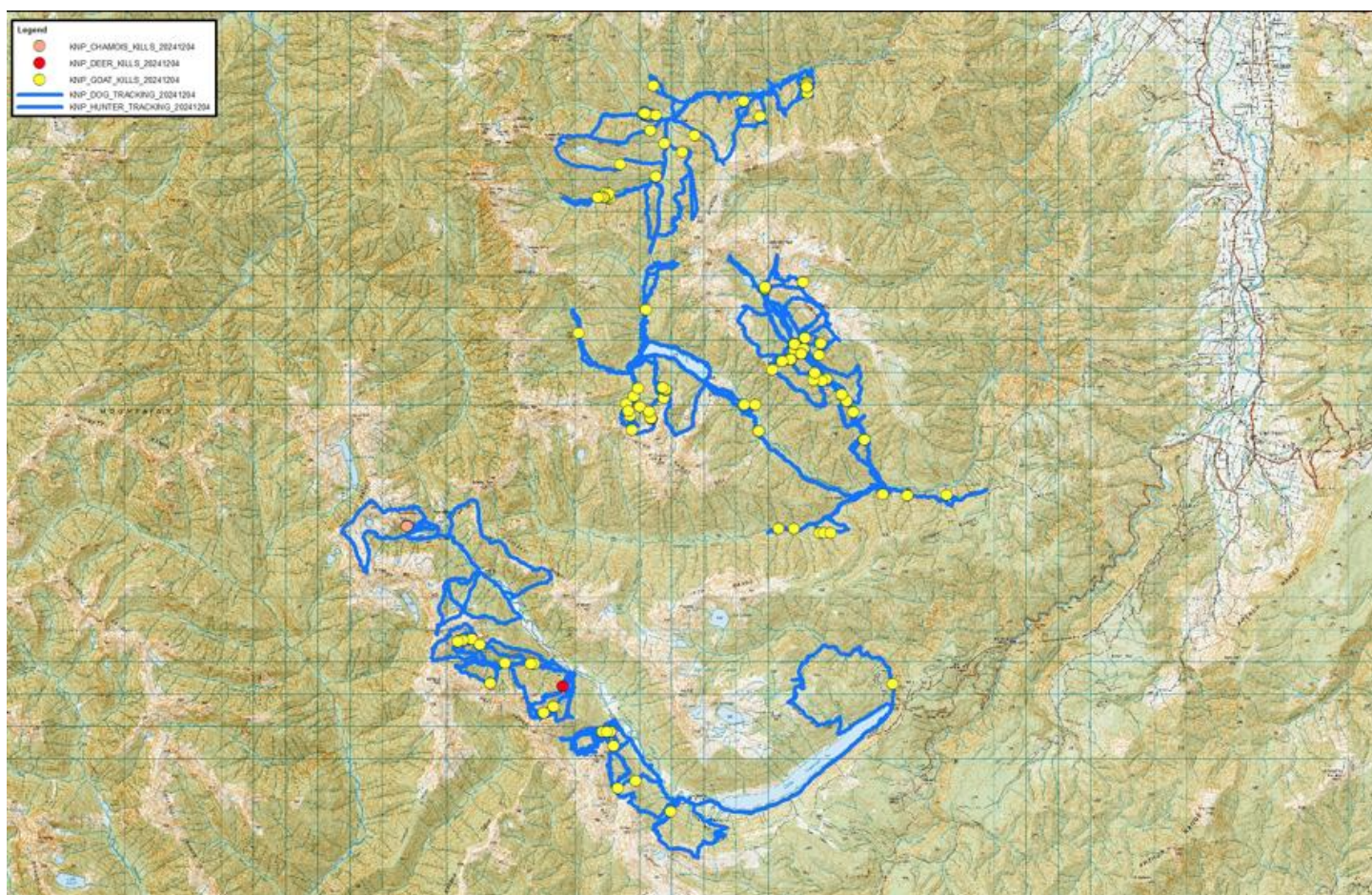
Good morning hunters,

Here are the results to date (Dec 2024) of our goat control programme for this financial year.

CAMP SITE	HOURS	GOAT KILLS
FLORA	70.5	14
GRECIAN	76.5	30
KARAMEA BEND	169.5	92
LESLIE CLEARING	171	51
SALISBURY	53.5	11
	541	198



AREA	HOURS	GOAT KILLS	CHAMOIS KILLS	DEER KILL
ANATOKI HUT	138	28	0	0
COBB VALLEY	192.5	26	3	1
LINDSAY TENT CAMP	137.5	42	0	0
SOPERS TENT CAMP	60	19	0	0
WAINGARO FORKS HUT	61	16	0	0
	589	131	3	1



General Comments: Goat numbers low in areas under sustained control (Cobb valley, Mt Arthur Tableland, Waingaro, Stanley and Anatoki rivers). Kiwis heard at Cobb tent camp, Waingaro forks, Sopers camp, Lindsay camp and Anatoki forks. Fallow deer sign and abundance up on last year. Red deer sign lower in mid Karamea Valley than previous years. Remains of four red deer stags found in Karamea valley, Gecian valley and Stanley River. More than likely aerial 1080 by kills.

Incidental kills: One juvenile red deer hind upper Karamea river (Ian Cox) to supplement meat supply for goat control from Trevor Carter hut. Walked in and out (96km) so was travelling light on supplies. One juvenile red deer hind shot in Cobb valley (contractors) to supplement meat supplies due to a change of plans requiring an extra five days in the field (six hunters). Three chamois being one adult female and two juveniles out of group of five near Lake Cobb.

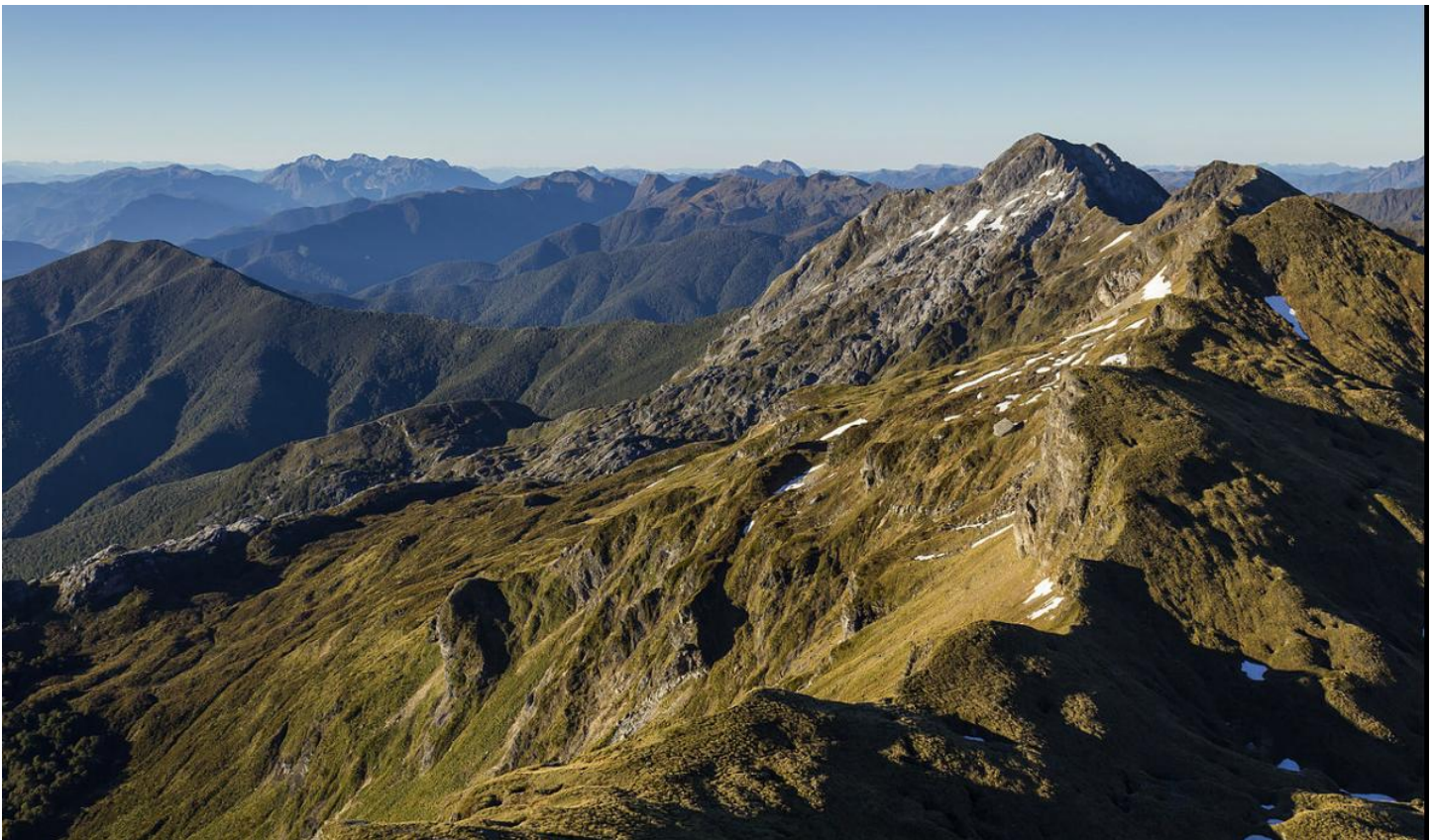
Sightings and observations:

Four red deer upper Karamea valley being one large stag and three hinds, one set of chamois prints in Lost valley upper Karamea valley, a few unidentified red deer in Leslie and mid Karamea valleys, numerous fallow deer in Flora, Grecian valleys, and Mt Arthur Tableland. One large red deer stag sighted in Cobb valley; one large chamois buck seen in Mt Prospect/Chaffey Ck head area Cobb valley, fresh pig sign lower Wangapeka valley,

I have shot 40 + goats in the Wangapeka, South Riwaka and Karamea river headwaters ground hunting. I shot one of five red deer for camp meat in the Karamea. Could have shot several pigs up in the Wangapeka but put the local pig hunters onto them. They cleaned them up.

I have also shot 382 goats and a pig in KNP aerial hunting. Most of them in and around the South Branch Riwaka and Graham valleys.

Cheers, Merry Christmas and happy hunting – Coxy



Club Night – 6pm Wednesday 26th February

RSVP Required



February Club Night 2025

Let's start the year off right with a great first family club night

and Roaring competition to start the roar season off

Come and join us for a night full of fun, laughter and some bloody good chats and banter. We will be hosting the first club night for 2025 at Hunting and Fishing's new and improved building @ the Nelson Junction opposite Mitre 10 Mega. We will be starting early for food and to cater for our younger members to attend so bring the family. We will have the BBQ fired up and have make your own burger stand for dinner. NO GF

We are bringing back the almighty famous roaring competition, both adult and youth classes, to enter the roaring comp please fill out the entry form and send it back ASAP - one entry per person please, and you will have to have your own roaring horn etc - NO ELECTRONIC ROARING DEVICES. We will have a screen up for you to stand behind so don't be shy.

Other competitions just for fun on the night will be a topic of debate, the guess the hide comp and a good old Douglas scoring one as well.

We will also love it if you could RSVP for catering, staffing and H&S requirements.

RSVP to carina@nzdanelson.co.nz with how many adults/kids with names to add to the sign in form for H&S purpose as being held at H&F.

Roaring Competition entry carina@nzdanelson.co.nz with name and if wanting to enter the under 16yrs please add youth's name/age.

When : 26th February 2025

Time: 6.00 pm

Where: Hunting and Fishing new store at Nelson Junction opposite Mitre 10 Mega.

RSVP: by 21st Feb please by emailing on the email above with numbers attending

Lighten Up



Make sure you are getting “roar fit”! This is not a recommended training regime.

Member Benefits – Know & Get Your Share!

Home / What we do /

MEMBER BENEFITS

Home / What we do /

HUNTER INSURANCE

A special insurance package has been developed by NZDA for members*.

As a NZDA member you and your family can feel safe knowing you are personally covered in a hunting related accident or while undertaking NZDA activities.

Insurance only covers financial members, and is often a requirement when hunting on forestry blocks, so with our insurance cover you can access more hunting opportunities.

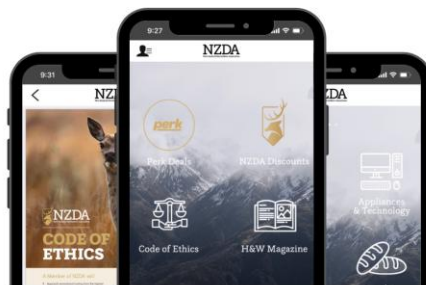
NZDA and all our members are covered by [AIG Insurance New Zealand Limited](#) insurance when hunting and undertaking NZDA activities.

The insurance indemnity cover includes:

- \$10,000,000 for General Liability
- \$10,000,000 for Products Hazard Liability
- \$500,000 for Statutory Liability

*Excludes Associate Membership

A MAJOR PERK OF YOUR NZDA MEMBERSHIP IS THE OFFICIAL APP.



Save your membership fee by using the NZDA discounts - click here:

[NZDA APP Discounts and More](#)



SUPPORTERS OF NELSON NZDA HUNTS COURSES AND KAI RESCUE [MORE INFO HERE:](#)

[MEAT SOLUTIONS](#)

Hunting and Fishing February Deals for Members Only



VIP FEBRUARY SPECIALS



LOWA TIBET GTX WIDE BOOT -

(MENS)

WAS \$779.99,

NOW \$629.99



CRESSI DIVE PRODUCTS - FULL PRICED PRODUCTS

30% OFF



CRISPI DAKOTA GTX BOOT -

(MENS)

WAS \$669.99

NOW \$549.99



COMPANION AQUAHEAT LITHIUM GAS SHOWER

WAS \$499.99

NOW \$399.99



ZEMPIRE MONSTAMAT SINGLE

WAS \$249.99

NOW \$219.99



HUNTING & FISHING CATLINS RETRO CHECK CHAIR

WAS \$79.99

NOW \$49.99



VIP SPECIALS ARE ONLY AVAILABLE AT NELSON HUNTING & FISHING, NO OTHER HUNTING & FISHING BRANCHES. TO REDEEM DISCOUNT, PLEASE SHOW STAFF YOUR MEMBERSHIP CARD/ID. SPECIAL PRICING ON OFFER FROM 03/02/2025-28/02/2025

99 CADILLAC WAY, ANNESBROOK, NELSON

03 548 1840

NELSON.STORE@HUNTINGANDFISHING.CO.NZ

Important links

Red Deer Lodge

- Information on costs and bookings of the Red Deer Lodge at Lake Rotoiti [Red Deer Lodge](#)
- Contact for Accom: info@rotoitibaches.co.nz
- **Always remember to advise you are a Nelson member.**

2024 Branch Committee, Information & Contacts

- All details can be found on our refreshed website: [Nelson Branch Committee](#)
- Website [Nelson Branch NZDA](#)
- Facebook [Facebook Nelson NZDA](#)

Other Key Links - **click on the orange.**

Advocacy and Access

- NZDA National Association [NZDA](#)
- DOC Hunting Portal [Hunting Conservation Land](#)
- Fiordland Wapiti Foundation [Wapiti](#)
- Game Animal Council [GAC](#)
- Outdoor Access Commission [OAC](#)
- Walking Access NZ [WAMS Maps](#)
- LINZ Basemaps [MAPS Link](#)
- 141 Forest Access Information [141 Access and Permit Info](#)

Ballots

- [Haast Ballot](#)
- [Wanaka Ballot](#)
- Southland [Waikaia](#) [Leithen Bush](#) [Wainakarua](#) [Catlins](#)
- Fiordland [Wapiti Foundation Ballot](#)
- Caples & Greenstone [RHA Ballot](#)

Firearms and Safety

- COLFO [COLFO](#)
- NZ Firearms Safety Authority [Te Pureke](#)
- Mountain Safety Council [MSC](#)
- MSC Videos on [everything](#) safety and hunting [Watch Videos](#)
- Avalanche Advisory [Avalanche Advisory Site](#)