



Lest We Forget – Memorial to the Fallen, Glenroy, Canterbury.



Club Night – Mark and Warren tell all in “Where to go Hunting”.

THIS MONTH

EDITORIAL

**Range Matters –
Easter Benchrest
National Competition**

Ballot Blocks Rock!

**Local Forestry Block
Access Permits News**

**What Lives Here? A
New Competition for
Readers**

Fish & Game News

Lighten Up

CLUB NIGHT

Tuesday 27th April

**TSN Smallbore Range
Saxon Field – Doors
open 7pm**

Where to go Hunting

MEMBER BENEFITS

IMPORTANT LINKS

**Easter Benchrest
Competition – All
Scores**

Editorial

Love March and April!

The month started with the Easter National Benchrest competition at Packers Creek Range and records were broken! See full story below and well done those who competed and set some new records!

AS noted last Edition, I got around a few ballot blocks this autumn and greatly enjoyed. Got some nice meat. I hope many of you have been able to get out and have some good times in the hills too.



My picture essay is below...it does raise a question though...am I and a few others the only members going out the door with a rifle and camera these days? Really? Out of over 300 members I feel we should be able to get a few more pics with simple captions other than my sorry efforts every month! **C'mon!**

Interesting stuff happening in Wapiti Land with the case taken against DOC. This will be of keen interest to us and other agencies. Keep your eye on our own news from National Office and also check in on GAC [Fiordland-Wapiti-Foundation-Legal-Action](#)

See the news about local forests access and permitting. Important stuff for local hunting.

A shout out to David Haynes and Marlborough Branch reps who have packaged up the Animal Control Programme with DOC in Nelson Lakes in May – great collaborative effort and look forward to some good stories from this.

As I write this a massive deluge is occurring on the West Coast and Fiordland, our thoughts are with those who live and work in these regions and the difficulties these events create for them. It was notable too that when we flew out of our South Westland block that the pilot said few were flying into areas for the 3rd period because the forecast was so bad. So, a lot of disruption for hunters too, and hard, after a year of planning to have to step back.

Hope to see many of you at Club Night at the end of the month and don't forget to get ready with your photos for our annual competition which will open in May.

Good Hunting & Safe Shooting - **Richard Wells**



West Coast fungi reminiscent of poppies

Range Matters - Easter National Competition

If interested in using the Range always check the calendar on our website: [Nelson NZDA Range Info](#)

Always be aware of and comply with our Ranges' Standing Orders – they are posted at the Ranges, but you should refresh yourself from our website:

Packers Creek – [Standing Orders Click Here](#) Range Use Etiquette - [Etiquette and Golden Rules Click Here](#)

Murchison Community Range - [Standing Orders Click Here](#)

Easter National Benchrest Competition at our Packers Creek Range



Top Three: 2 Gun - 1st Greg Couper, 2nd Ian Owen, 3rd Graeme Smith and in the **Heavy Varmint** 1st Greg Couper, 2nd Graeme Smith and 3rd Ian Owen



Top Three: Light Varmint Aggregate – 1st Ian Owen, 2nd Greg Couper, 3rd Carina Jackson



Top Three: Rimfire Benchrest – 1st Graeme Smith, 2nd Greg Couper, 3rd Carina Jackson



Competition Dinner Time



Reloading in our Packers Creek Range Building



Youngest competitor learning the tricks of the trade (this could be you young fellas.....)



Tricky light



200 yard scope's eye view.



Works of art.



Shoot!

As always – if interested in having a try at benchrest shooting contact Graeme Smith by email lvhvbr@gmail.com We will support you!

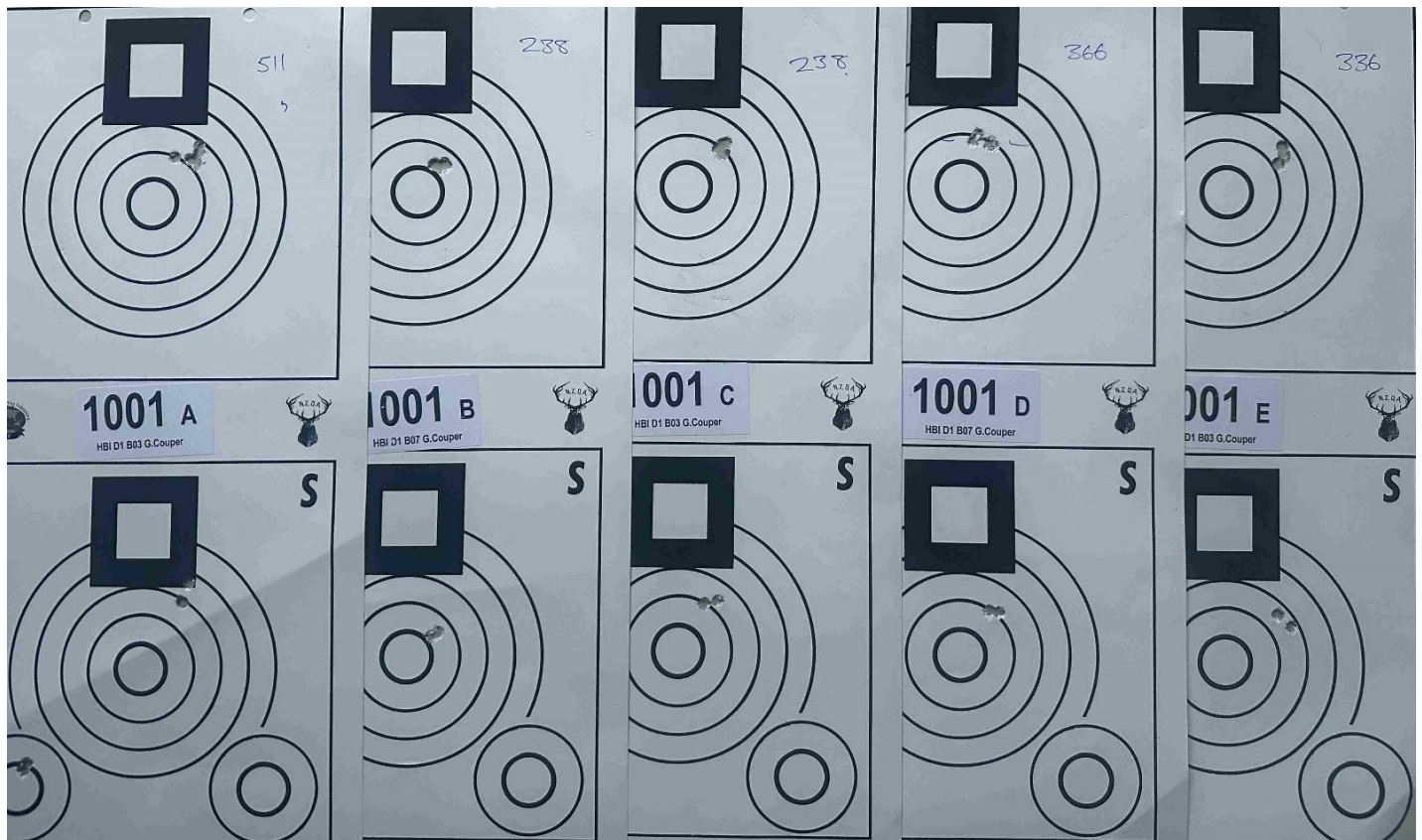
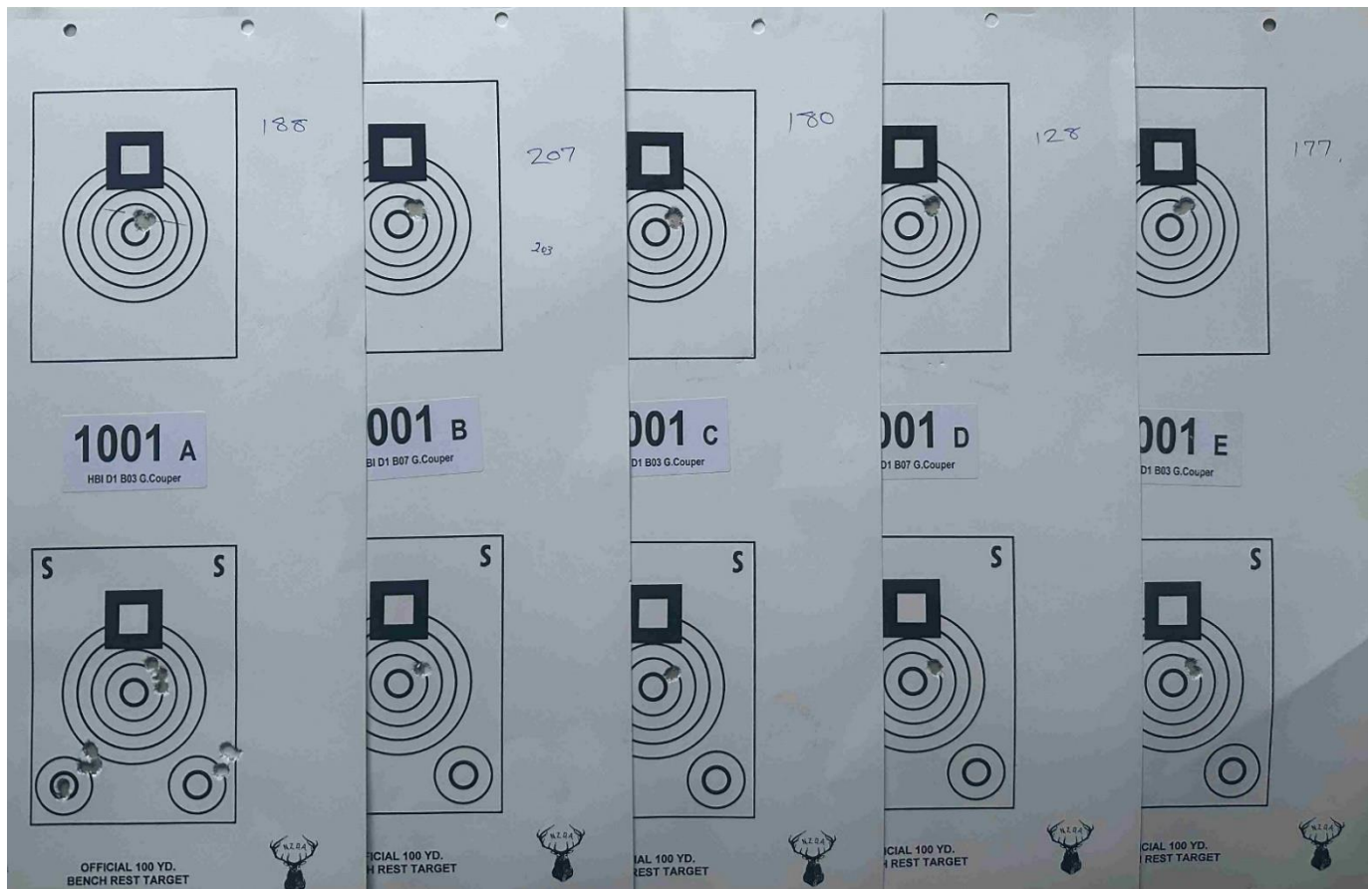
Stacking Chairs needed for our Packers Range Building

If any of our members have any stackable (tube framed) chairs or know of any available wanting a new home, the range building could do with **1/2 dozen** extra seats.

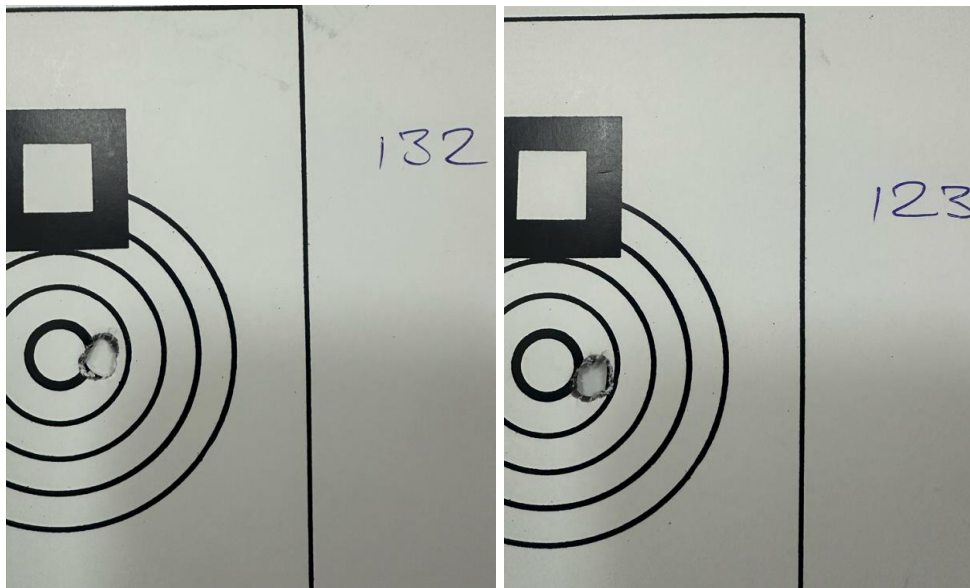
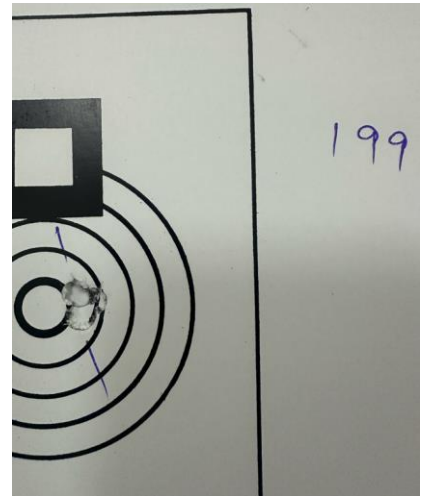
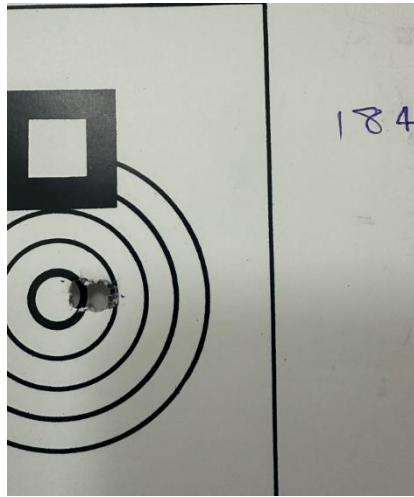
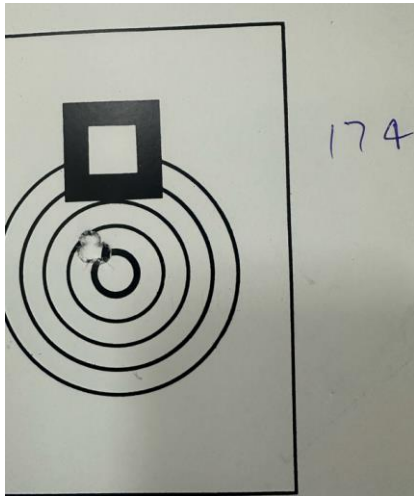
If anyone can help, please contact Graeme Smith email LVHVBR@gmail.com or ph.03 5447138



This sort of thing!



Tight! Greg Couper broke two New Zealand national records in **Heavy Varmint 200 yard five target** aggregate where the new record now is 0.1674 and he set a new HV grand (ten targets) aggregate record of 0.1717. **Congratulations and well done, Greg!**



And again! Graeme Smith's great set of **five 100 yard** targets, which equals a teen aggregate which means all the scores were between 0.10 and 0.20. **Great shooting Graeme!**

Ballot Blocks Rock – by *Richard Wells*

This year I worked really hard at entering ballots and was rewarded with several blocks across March and April. I will be doing a Club Night talk on balloting in the South Island later this year. Meantime, sit back, relax and get a small taste of an enjoyable few weeks in Molesworth, Otago Blue Mountains, Wanaka/Pisa and South Westland/Haast areas.



Spent two great days with our National President in Molesworth, we even got a slap of snow and sunburned as a result!



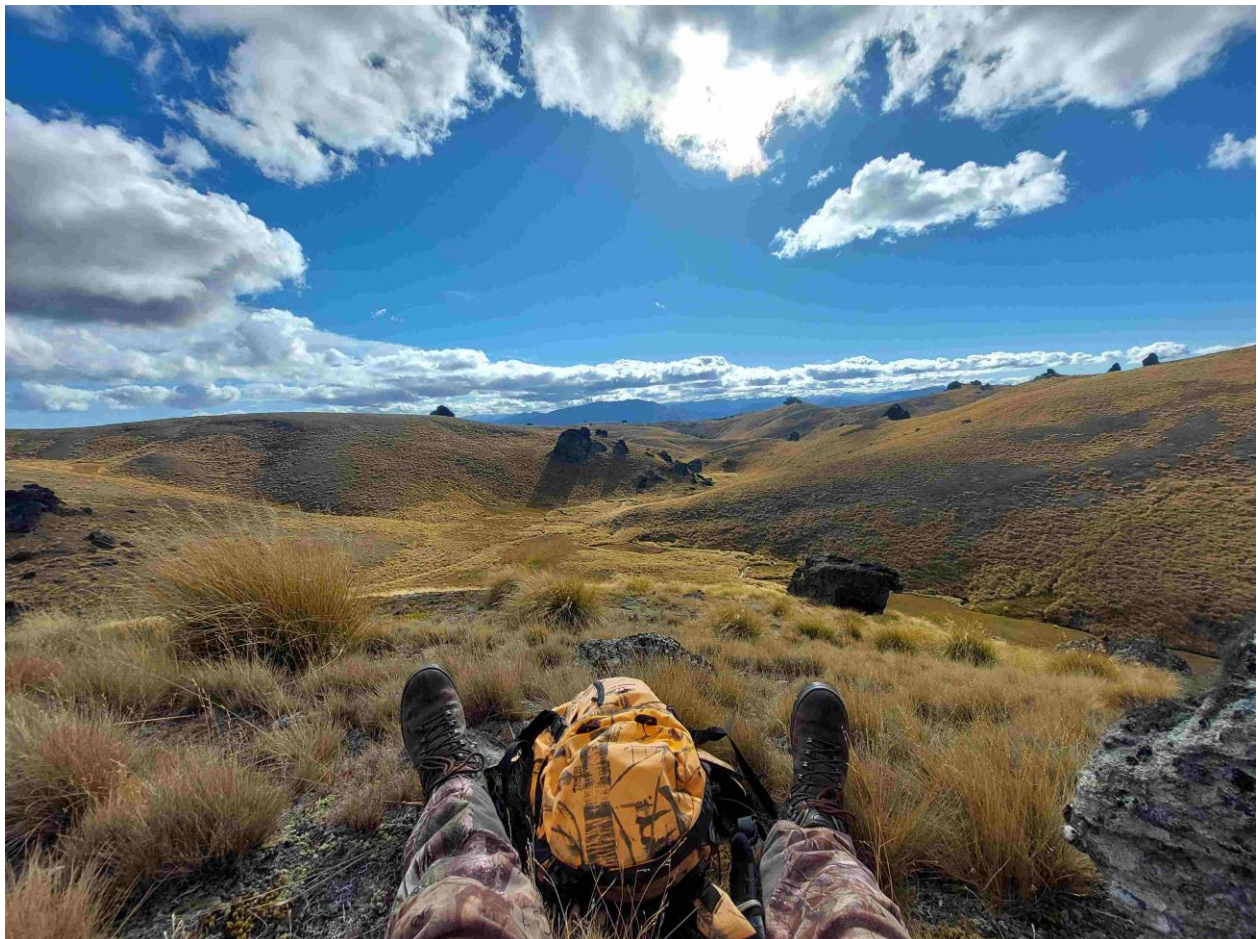
Looking up the Clarence and across to St James



Blue Mountains fallow are as crafty as they get in the South Island.....



But not crafty enough...I got two, one in this clearing and one in the bush. Nice frost.



Mid-Pisa block – endless tussock, rock and views. Saw 17 deer.....



Pisa rocks!



Young Marcel, recent Otago member with his first 2 deer, or parts thereof...if you count 6 legs that's cos we carried out two hind legs the night before! These ones chilled on the rock for the night.



A bit of snow, a bit of sun.....awesome.



Up the jungle West Coast... we hunted the swamps in dive boots – they're good!



Tamar's first stag.....happy days.



And we trapped 17 mice! Two traps mind you.....



Bye bye West Coast till next time.....



Local Forestry Block Access Permits News

Increased security in Tasman forests

ELOISE MARTYN

Applications are now open for obtaining a public hunting permit to OneFortyOne's forestry, and like last season this season has some changes too.

Last season, changes were made extending the hunting season and areas, state-of-the-art security cameras and high-tech magnetic alarms were installed, and applicants needed to have a minimum of third-party vehicle insurance.

This season, additional changes include monitored electronic lock systems on forestry gates and some blocks only having certain entry and exit access points.

"We have some electronic locks in place already in the south bank area near Blenheim, by the time public hunting opens in April we will have the north bank and Rai Valley areas completed as well, before moving on the Tasman region," R&M Security owner/operator, who took over OneFortyOne's

forestry security a few years ago, Rob Crawford, explains.

The locks operate via a Bluetooth cellphone app. "We are only a third of the way through our plan to have a better-secured forest and keep hunting exclusively for those who hold a permit, why should those who don't pay or play by the rule get to use the forest, that's not fair," he adds.

Rob says that already they are seeing dramatically decreased unlawful behaviour as a result of security measures they have implemented.

He says that the likes of things being dumped in the forest, poaching, and theft or damage to forestry crews' equipment and machinery have all decreased.

The majority of the land OneFortyOne manages is owned by local iwi Ngāti Toa, Te Ātiawa and Ngāti Tama.

"We work in close collaboration with our iwi landowners, who acknowledge

and support safe and sustainable activities on their land, including hunting,"

OneFortyOne NZ Forests general manager, Shaun Truelock says.

"The iwi are keen to build deeper connections with their land, and as part of this we are providing each iwi with their own hunting blocks on their land. This is a trial for this year and these blocks are separate to the public hunting blocks.

"The hunting permits available for the public this season give the permit holder access to 45,000 hectares in our Nelson, Tasman, and Marlborough forests, this is just over half of our estate. We are probably one of the largest private land managers that give this type of access."

Public hunting permit applications are open now, with public hunting commencing on 13 April, subject to operational and weather conditions.

Visit onefortyone.com for information.



OneFortyOne NZ Forests general manager Shaun Truelock. Photo: Supplied.

Story reproduced courtesy of The Waimea Weekly (March 20th Edition) Link [Online Issues of The Waimea Weekly](#)

What Lives Here? – by David Haynes

WHAT LIVES HERE?

For the next few months, we'll be publishing photos of new hunting areas explored by Hannibal Haynes and invite you to determine what animals you think he encountered and why you came to that conclusion. Use your knowledge, skills and experience to determine what and why game animals occupy some habitats and perhaps not others.

Here's the first one:

Location: Canterbury.

Orientation: Valley runs west to east.

Vegetation: Tussock, snow grass, sub alpine shrubs, mixed pasture grasses, broom, thistle.

Bush: Stands of red and mountain beech at head of streams.

Water: Several streams.

Hunting pressure: Low

Aerial 1080: None

WARO: None

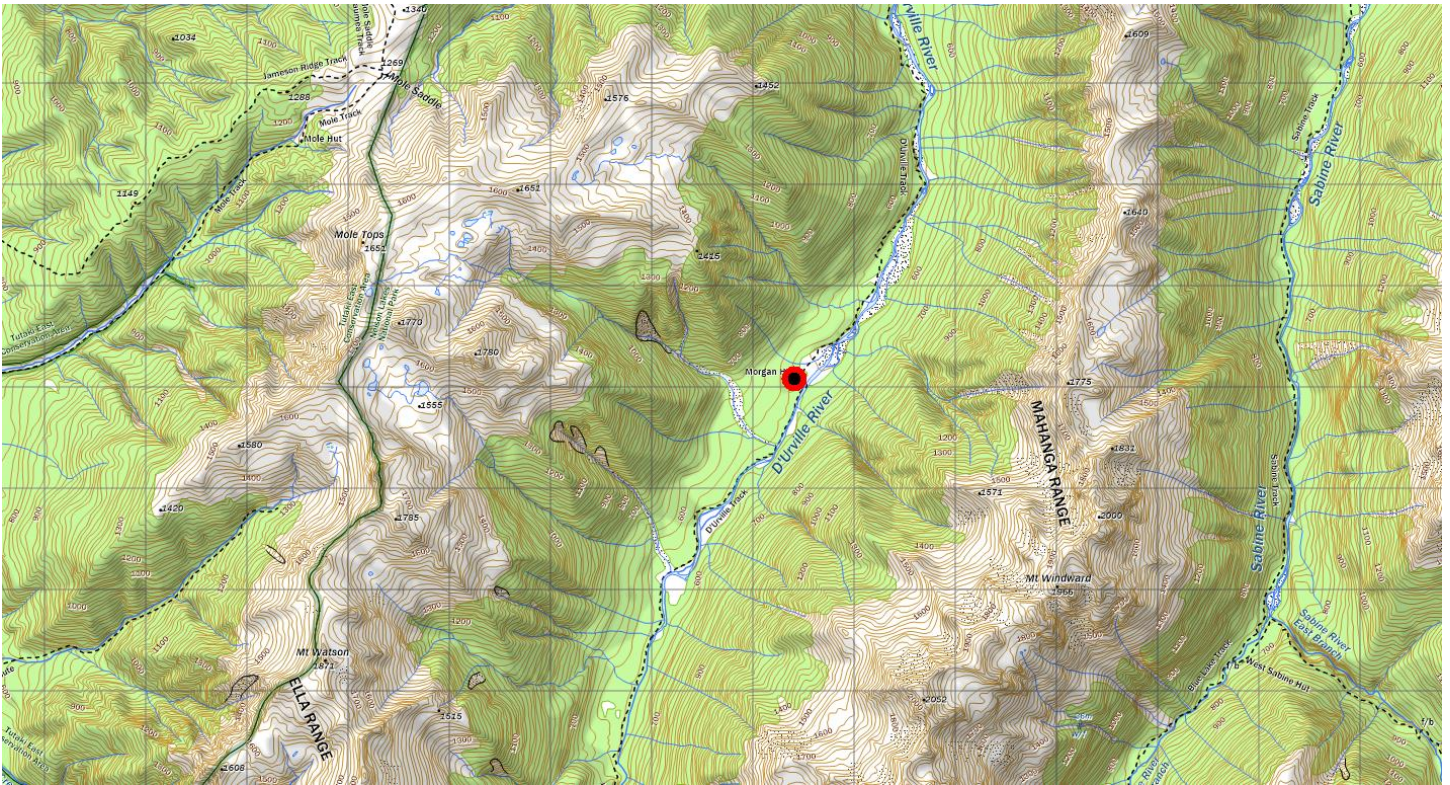
I spent three days exploring a few stream valleys and traversing up leading spurs to look down into valleys on either side. Email me at david@solumconsulting.co.nz to let me know what game animals you think were spotted and why.



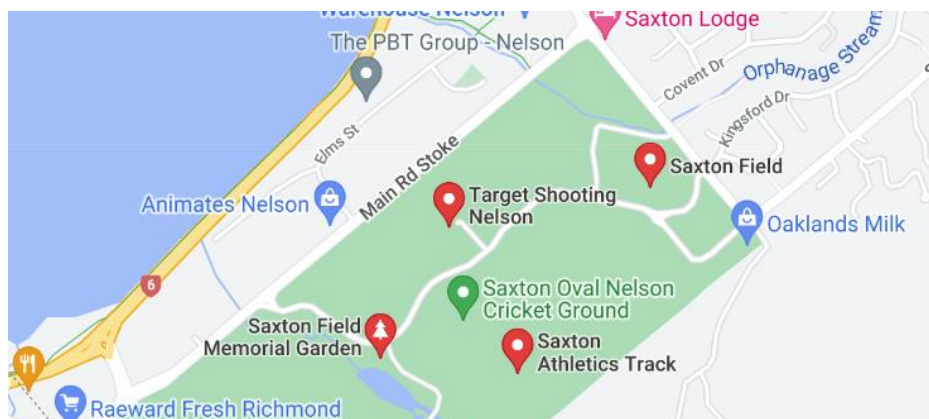
Next Club Night – Where to Hunt

No one can deny the experience of Mark McDonald and Warren Plum when it comes to hunting locally and further afield.

Come along, listen, and then pick their brains at our next Club Night!!



Where and When: Saxton Field TSN Smallbore Range @ 7pm



Fish and Game News

NELSON MARLBOROUGH FISH & GAME REPORT



BRANCH/LEATHAM FISH MONITORING: Staff recently spent three days electric fish monitoring of native fish and trout in the Branch and Leatham rivers. The Department of Conservation and MDC freshwater staff also assisted with the work. The Branch/Leatham monitoring programme has been completed each year by Fish & Game staff since 2018, and involves surveying mainstem and side-stream sites - around 15 sites in total. Due to the very stable flow conditions over the past 10 months, our count of Northern flathead and Dwarf Galaxiid was the highest yet - indicating that stability (eg lack of major floods) is a key driver for galaxiid abundance in this area. This valuable data provides reassurance that our annual releases of rainbow trout here should be able to continue in the future.

TRAPPING EFFORTS CONTINUE: Our Rabbit Island trap line is ticking along nicely thanks to key volunteers. We are also assisting Farmers 4 Whio with their trapping efforts in the Motueka catchment. The Skeet line, which we have been running since last winter, is running well, and we are now assisting with another trap line in the Baton Valley, which the Nelson Trout Fishing Club will be assisting with in the future.

DRIFT DIVES COMPLETED: Our programme of drift dives has been completed, with recent dives of the Clarence, Acheron, Rai and Pelorus undertaken. We also assisted North Canterbury Fish & Game with dives on the Boyle and Lewis rivers. Overall, trout numbers were generally good, with the Motueka/Wangapeka being standouts.



Electric fishing monitoring for native fish and trout- Branch River

Drift diving the Motueka River

Lighten Up



Misses the point that most bears are adept at climbing trees but good joke all the same!

Member Benefits – Know & Get Your Share!



A special insurance package has been developed by NZDA for members*.

As a NZDA member you and your family can feel safe knowing you are personally covered in a hunting related accident or while undertaking NZDA activities.

Insurance only covers financial members, and is often a requirement when hunting on forestry blocks, so with our insurance cover you can access more hunting opportunities.

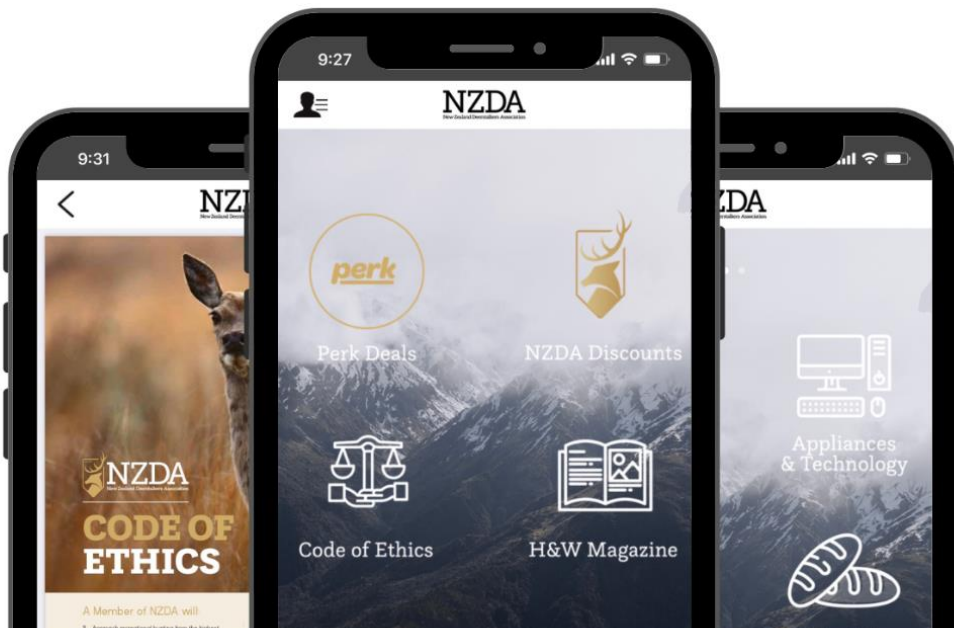
NZDA and all our members are covered by [AIG Insurance New Zealand Limited](#) insurance when hunting and undertaking NZDA activities.

The insurance indemnity cover includes:

- \$10,000,000 for General Liability
- \$10,000,000 for Products Hazard Liability
- \$500,000 for Statutory Liability

*Excludes Associate Membership

A MAJOR PERK OF YOUR NZDA MEMBERSHIP IS THE OFFICIAL APP.



Save your membership fee by using the NZDA discounts - [click here](#):

NZDA APP Discounts and More



Membership with the NZDA comes with a number of benefits:

- [Membership App](#) with discounts at major retailers.
- Regular [newsletters](#), advice and information directly to your inbox, both at your local Branch level and on nationally significant level. We inform our members about events and changes in the laws affecting hunting and shooting. We will also be the first to tell our members about current lobbying issues.
- Exclusive NZDA discounts:
 - Interisland Ferry group booking discount (contact us for the code)
 - [Go Native](#) outdoor meals and snacks, 25% discount
 - [Ridgeline Clothing](#) - functional, purpose designed hunting gear, 10% discount + exclusive discounts for HUNTS Instructors and graduates
 - [SWAZI Pro Deal](#), sign-up with your valid NZDA membership
 - [AJ Productions](#) - electronic game caller and trail cameras, 10% discount
 - [Kilwell Sports](#) hunting supplies, 15% discounts on website orders
 - Hunting with [Huntahr Guiding](#), 10% discount
 - Heli Sika, 10% discount on helicopter flights to hunting blocks
 - [Murchison Heli Tours](#), 10% off your flights
 - [NZ Taxidermy Ltd](#), 10% discount on mounts
 - 30% discount of Department of Conservation annual [Backcountry Hut Pass](#) or 'Hut Pass'. [See the DoC website for more details](#)
 - [Bush Life NZ](#), 20% discount on web orders
 - 10% discount at all good sporting, shooting and hunter retailers on request
- Public Liability [Insurance](#) when hunting and undertaking NZDA activities
- Quarterly Member Magazine: [NZ Hunting & Wildlife](#) - Spring, Summer, Autumn and Winter
- Branch club nights and guest speakers
- Conference and events
- [Competitions](#)
- Access to rifle ranges
- Networks of facilities, accommodation and huts
- [HUNTS training program](#) – training courses & certification for HUNTS Instructors
- Head measuring – access to [Douglas score](#) measurers
- [Research grants](#)

SUPPORTERS OF NELSON NZDA HUNTS COURSES AND KAI RESCUE **MORE INFO HERE:**

MEAT SOLUTIONS

Red Deer Lodge

- Information on costs and bookings of the Red Deer Lodge at Lake Rotoiti [Red Deer Lodge](#)
- Contact for Accom: info@starnaudholidaycottages.co.nz
- **Always remember to advise you are a Nelson member.**

2022 Branch Committee, Information & Contacts

- All details can be found on our refreshed website: [Nelson Branch Committee](#)
- Website [Nelson Branch NZDA](#)
- Facebook [Facebook Nelson NZDA](#)

Other Key Links - click on the orange.

- NZDA National Association [NZDA](#)
- DOC Hunting Portal [Hunting Conservation Land](#)
- Fiordland Wapiti Foundation [Wapiti](#)
- Game Animal Council [GAC](#)
- Walking Access NZ [WAMS Maps](#)
- LINZ Basemaps [MAPS Link](#)

Ballots

- [Haast Ballot](#)
- [Wanaka Ballot](#)
- Southland [Waikaia](#) [Leithen Bush](#) [Wainakarua](#) [Catlins](#)
- Fiordland [Wapiti Foundation Ballot](#)

- COLFO [COLFO](#)
- Mountain Safety Council [MSC](#)
- MSC Videos on [everything](#) safety and hunting [Watch Videos](#)
- Avalanche Advisory [Avalanche Advisory Site](#)
- NZ Police (Firearms Law) [Firearms](#)
- Police Firearms Safety Videos [FSA Safety Videos](#)

Also see here for firearms storage and carriage: [NZ Police Guide to Lawful Storage and Carriage of Firearms](#)

Easter National Championship Benchrest Results

MULTI GUN RESULTS (Group) – **Nat 2Gun**

		30/03/24	31/03/24	2 Gun
		LBI	HBI	
1	Greg Couper	0.2553	0.1724	0.2139
2	Ian Owen	0.2257	0.2495	0.2376
3	Graeme Smith	0.3121	0.2187	0.2654
4	Carina Jackson	0.2717	0.2617	0.2667
5	Steve Bell	0.3078	0.2746	0.2912
6	Steve Williams	0.2975	0.2969	0.2972
7	Tony Titheridge	0.3143	0.2990	0.3067
8	Peter Haxell	0.3034	0.3421	0.3227
9		0.3467	0.3029	0.3248
10	Grant Hammond	0.3373	0.3177	0.3275
11	Helen Owen	0.3584	0.3579	0.3582
12	Dougall Cameron	0.3557	0.3609	0.3583
13	Baden Prentice	0.3855	0.4066	0.3960
14	Elliot Cameron	0.4419	0.4589	0.4504
15	Michael Kidson	0.4992	0.4808	0.4900

Date : 31/03/2024

Title: 2024 HV Nationals

Range: Nelson

S.I.

Class: **Heavy Benchrest**

=====

Name	W	A	B	C	D	E	Agg	GAgg	PN
Greg	S.I. 100	.188	.207	.180	.128	.177	.1760	2	
Couper	1001 200	.511	.238	.238	.366	.336	.1689	1	.1724 1

Graeme	S.I. 100	.174	.184	.199	.123	.132	.1624	1	
Smith	2013 200	.926	.590	.399	.511	.323	.2749	3	.2187 2

Ian	S.I. 100	.146	.330	.242	.173	.268	.2318	4	
Owen	2004 200	.494	.501	.569	.539	.570	.2673	2	.2495 3

Carina	S.I. 100	.194	.159	.216	.230	.208	.2014	3	
Jackson	2103 200	.632	.518	.943	.484	.643	.3220	6	.2617 4

Steve	N.I. 100	.242	.319	.219	.227	.221	.2456	5	
Bell	1020 200	1.148	.422	.509	.441	.515	.3035	5	.2745 5

Steve	S.I. 100	.224	.262	.307	.317	.236	.2692	7	
Williams	2014 200	.759	.343	.489	.866	.788	.3245	7	.2969 6

Tony	S.I. 100	.441	.299	.260	.234	.257	.2982	8	
Titheridge	2012 200	.516	.890	.575	.638	.380	.2999	4	.2991 7

N.I. 100 .427 .282 .208 .150 .180 .2494 6

1014 200 .649 .678 .687 1.038 .513 .3565 10 .3029 8

Grant N.I. 100 .351 .252 .371 .267 .312 .3106 9

Hammond 1019 200 .440 .637 .849 .756 .567 .3249 8 .3177 9

Peter N.I. 100 .371 .200 .303 .258 .517 .3298 10

Haxell 1013 200 .475 .662 .631 .641 1.134 .3543 9 .3420 10

Helen S.I. 100 .230 .328 .269 .547 .405 .3558 13

Owen 2005 200 .530 .692 1.088 .653 .636 .3599 11 .3579 11

Dougall N.I. 100 .280 .240 .447 .256 .518 .3482 11

Cameron 1010 200 .975 .393 .838 .877 .653 .3736 12 .3609 12

Baden N.I. 100 .540 .384 .252 .350 .221 .3494 12

Prentice 1018 200 1.245 .710 .981 .993 .708 .4637 14 .4066 13

Elliot N.I. 100 .438 .417 .412 .340 .337 .3888 14

Cameron 1017 200 1.103 .652 .913 1.299 1.323 .5290 15 .4589 14

Michael S.I. 100 .698 .332 .571 .497 .511 .5218 15

Kidson 2106 200 1.170 .822 .793 .902 .712 .4399 13 .4808 15

Best Scores 100 | Best Scores 200

A I Owen .146 | A G Hammond .440

B C Jackson .159 | B G Couper .238
 C G Couper .180 | C G Couper .238
 D G Smith .123 | D G Couper .366
 E G Smith .132 | E G Smith .323

SG G Smith .123 (Rec .068) | SG G Couper .238 (Rec .203)
 Agg G Smith .1624 (Rec .1622) | Agg G Couper .1689 (Rec .1819)

=====
 =====

Date : 30/03/2024 Title: 2024 LV Nationals
 Range: Nelson S.I. Class: Light Benchrest

=====
 =====

Name	W	A	B	C	D	E	Agg	GAgg	PN
Ian	S.I. 100	.195	.256	.147	.229	.323	.2300	2	
Owen	2004 200	.190	.547	.434	.382	.661	.2214	2	.2257 1

Greg	S.I. 100	.343	.365	.270	.260	.240	.2956	6	
Couper	1001 200	.329	.380	.425	.745	.271	.2150	1	.2553 2

Carina	S.I. 100	.144	.228	.107	.263	.260	.2004	1	
Jackson	2103 200	.756	.738	.496	.657	.784	.3431	8	.2717 3

Steve	S.I. 100	.256	.224	.242	.328	.518	.3136	8	
Williams	2014 200	.650	.645	.349	.437	.733	.2814	3	.2975 4

Peter	N.I. 100	.231	.282	.127	.444	.346	.2860	5	

Haxell 1013 200 .741 .634 .421 .386 1.025 .3207 6 .3034 5

Steve N.I. 100 .178 .187 .306 .384 .329 .2768 4

Bell 1020 200 .613 .501 .825 .527 .922 .3388 7 .3078 6

Graeme S.I. 100 .323 .236 .330 .437 .211 .3074 7

Smith 2013 200 .663 .640 .549 .406 .910 .3168 4 .3121 7

Tony S.I. 100 .342 .274 .206 .342 .193 .2714 3

Titheridge 2012 200 .614 .627 1.107 .636 .588 .3572 11 .3143 8

Grant N.I. 100 .267 .227 .401 .282 .464 .3282 9

Hammond 1019 200 .536 .847 .710 .554 .817 .3464 10 .3373 9

N.I. 100 .367 .384 .366 .305 .319 .3482 11

1014 200 1.101 .680 .667 .394 .610 .3452 9 .3467 10

Dougall N.I. 100 .579 .283 .198 .419 .487 .3932 13

Cameron 1010 200 .706 .595 .623 .458 .799 .3181 5 .3557 11

Helen S.I. 100 .542 .338 .354 .275 .284 .3586 12

Owen 2005 200 .674 .542 .512 .827 1.028 .3583 12 .3584 12

Baden N.I. 100 .206 .280 .325 .534 .376 .3442 10

Prentice 1018 200 1.066 1.038 .776 .717 .670 .4267 13 .3855 13

Elliot N.I. 100 .362 .356 .229 .399 .642 .3976 14

Cameron 1017 200 1.059 .797 .771 1.455 .780 .4862 14 .4419 14

Michael S.I. 100 .316 .338 .594 .661 .371 .4560 15

Kidson 2106 200 .831 .665 .856 1.389 1.683 .5424 15 .4992 15

Best Scores 100 | Best Scores 200

A C Jackson .144 | A I Owen .190

B S Bell .187 | B G Couper .380

C C Jackson .107 | C S Williams .349

D I Owen .229 | D I Owen .382

E T Titheridge .193 | E G Couper .271

SG C Jackson .107 (Rec .065) | SG I Owen .190 (Rec .133)

Agg C Jackson .2004 (Rec .1812) | Agg G Couper .2150 (Rec .1978)

=====
=====
Date : 01/04/2024

Title: 2024 RF Nationals

Range: Nelson S.I.

Class: Int. RimFire Benchrest

=====
=====
Name State/No A/D B/E C/F Total G Total PN

Graeme S.I. 50 246.09 249.12 249.16 744.37 1

Smith 2013 0

Greg S.I. 50 249.13 246.11 247.11 742.35 2

Couper 1001 0

Carina	S.I.	50	247.12	248.14	245.15	740.41	3
Jackson	2103	0					

Tony	S.I.	50	246.09	248.08	244.13	738.30	4
Titheridge	2012	0					

Warren	S.I.	50	247.13	245.09	243.11	735.33	5
Smith	2104	0					

Dougall	N.I.	50	244.10	245.09	245.07	734.26	6
Cameron	1010	0					

Ian	S.I.	50	242.12	242.09	247.10	731.31	7
Owen	2004	0					

	N.I.	50	243.14	243.12	235.05	721.31	8
	1014	0					

Anne Marie	S.I.	50	236.06	238.09	242.05	716.20	9
Kidson	2010	0					

Peter	N.I.	50	241.10	237.08	235.10	713.28	10
Haxell	1013	0					

John	S.I.	50	230.04	237.02	246.09	713.15	11
Ronaldson	2110	0					

Steve	S.I.	50	241.06	231.04	240.06	712.16	12
Williams	2014	0					

Elliot	N.I.	50	241.05	218.04	238.10	697.19	13
Cameron	1017	0					

Terry	S.I.	50	230.05	217.06	214.05	661.16	14
Farnham	2107	0					

Michael	S.I.	50	218.01	189.01	215.04	622.06	15
Kidson	2106	0					

Best Scores 50 | Best Scores 0

A G Couper 249.13 |

B G Smith 249.12 |

C G Smith 249.16 |