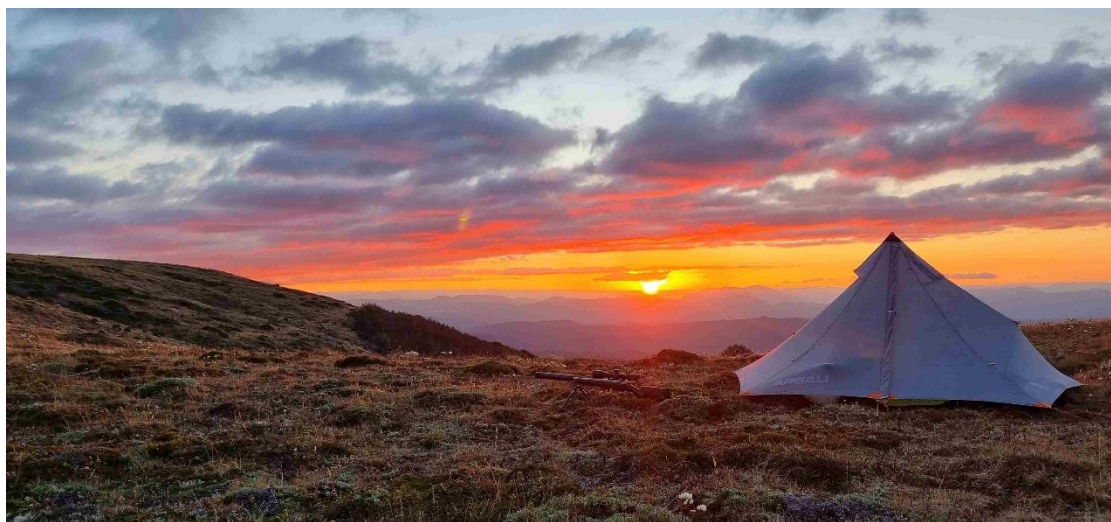




# *THE MOUNTAIN ECHO*

April 2025

Newsletter of Nelson Branch NZDA



**Out There Doing It!** Lovely scene from our photo-competition last year. Credit Mike DeGray.

## Next Club Night



Big game hunting guide Wille MacDonald presents.

**Club Night - Wednesday 7 pm 30<sup>th</sup> April @ TSN Saxton Smallbore**

## THIS MONTH

### EDITORIAL

**Sons and Daughters in Molesworth**

**Range Matters – .22 Results and NZDA Nationals Easter Competition**

**Tall Tales BUT True!**

**What is Your Emergency? - Garmin Global User Statistics**

**Lighten Up!**

**CLUB NIGHT  
Out of Africa!**

**Hunt & Fish  
April  
Specials**

**MEMBER  
BENEFITS**

**IMPORTANT  
LINKS**

# Editorial

Hi Hunters and Shooters

We hope those of you into the annual roar season are getting some good hunting experiences. As I write this I see heavy rain forecast in early April that looks to spoil some of our family hunting plans!



Some key points for this month:

**AHT and Photo Competition** – As usual, don't forget that you must be a paid up member at time of taking your trophy or photo to qualify.

**Committee** - Our Branch AGM will be in June again and it's a time to confirm Committee members. It would be great to have some fresh minds so if you think you can help support our Club and its activities at Committee level please put your hand up -email our Secretary [dave@nzdanelson.co.nz](mailto:dave@nzdanelson.co.nz)

**Packers Creek Range** – We always need more Range Officers to spread the load for Duty Officer role on weekends. Please email Greg Couper if you can help [greg@terminatorproducts.co.nz](mailto:greg@terminatorproducts.co.nz)

**AGMs – Branch and National** – Deadlines are mid-May to submit Notices of Motion (which seek to get a new rule or rule change approved for Constitutions) or Remits (which seek to get formal approval for adoption of a new policy). If you wish to raise something at local or National level this must come through our Committee. So, if something is on your mind get in touch – it's a democracy!

**Easter National Shooting** – Important information below re range availability but also don't hesitate to contact Graeme if you would like to be involved in the event.

## Repeat Request!!

**Club Nights** – We are trying to conjure up Club Nights that are fun, interesting and interactive; especially we are keen to see more family members attend too. So, this is your chance to tell us what you would like to see over the coming year by emailing our Secretary [dave@nzdanelson.co.nz](mailto:dave@nzdanelson.co.nz). Some members have mentioned a buy/sell/swap night, there are members able to do a practical workshop on pest trapping, we can re-run the "How to Ballot" seminar and more (or a mix of these on the same night). So please send in your ideas. Or maybe you would like to present something! Please don't be shy, these activities need people to get in and engage.

**Light Work?** – As you can see from above we are at a point where we are struggling a wee bit to cover some bases in both organised activities, e.g. club nights, hunting or other field activities and Branch administration, e.g. oversight of Red Deer Lodge, managing special access to hunting areas, National Goat and our own AHT/Photo Competition, Range and general Committee work. Much of this currently falls to less than 10 people out of over 300 members. A few more capable hands would make this light work for all and allow more fun activities for all to enjoy. We do have resources available but the organisation and documentation of activities takes effort. You don't have to be on the Committee to be useful, just capable and reliable - which as hunters and shooters I presume you all to be!



Good Hunting & Safe Shooting – **The Editor**

# **Sons and Daughters in the Molesworth** by *Warren Plum & Richard Wells*

## **Warren (and son)**



Blair with our first deer together, aged 3

Hunting is a great thing, no matter what your age all can participate, and the experiences will be remembered for lifetimes by all involved. While I can vaguely remember family holidays and sports events etc, it's not with the same clarity that comes when reminiscing about things like my children seeing and taking their first game animal, I can remember every moment, the animal's behavior, how it moved and the shared joy of success, and found them to recollect it the same way.





At our Fiordland camp - age 18

It's on that note I realized that I had not shared such a moment with my son since our last great adventure when he was 18, hunting Wapiti together in Fiordland. Where have all the years gone? Work just got in the way and with him living of shore for some time before relocating to Taranaki. So, this January, we made it happen - Hunting in Molesworth





This year's success, oh how time rushes by.

I assured him we would see animals and with a bit of luck he would take his first deer in nearly 17 years. Hopefully a stag lacking bey tines and trophy potential as they would be in velvet and a Blue pig which would be a first. So that was the goal along with a photo of us actually together with an animal, as we had never seemed to have achieved one in the past. Always in a hurry and no self-timer.

As it turned out we had a wonderful time, all goals achieved, plus some. Noticeably we were both less fit and found the ground harder and hills steeper than in the past. I would like to think we might get to do it again, but if we don't, we have a wealth of memories and the photos to prove it.



## Richard (and daughters)



Perfect morning and lookout.

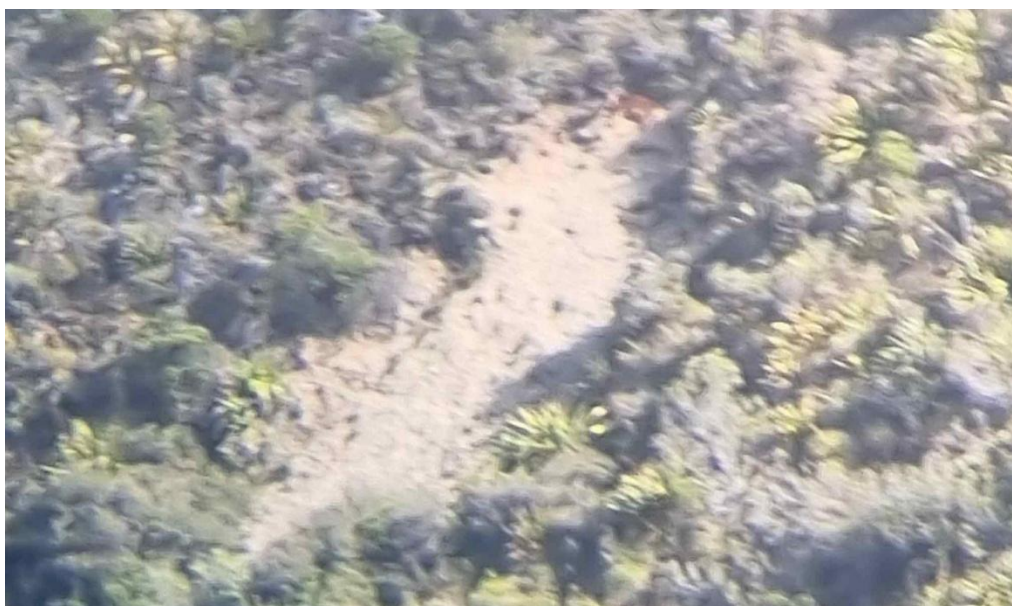


Old boy puffing along behind.....



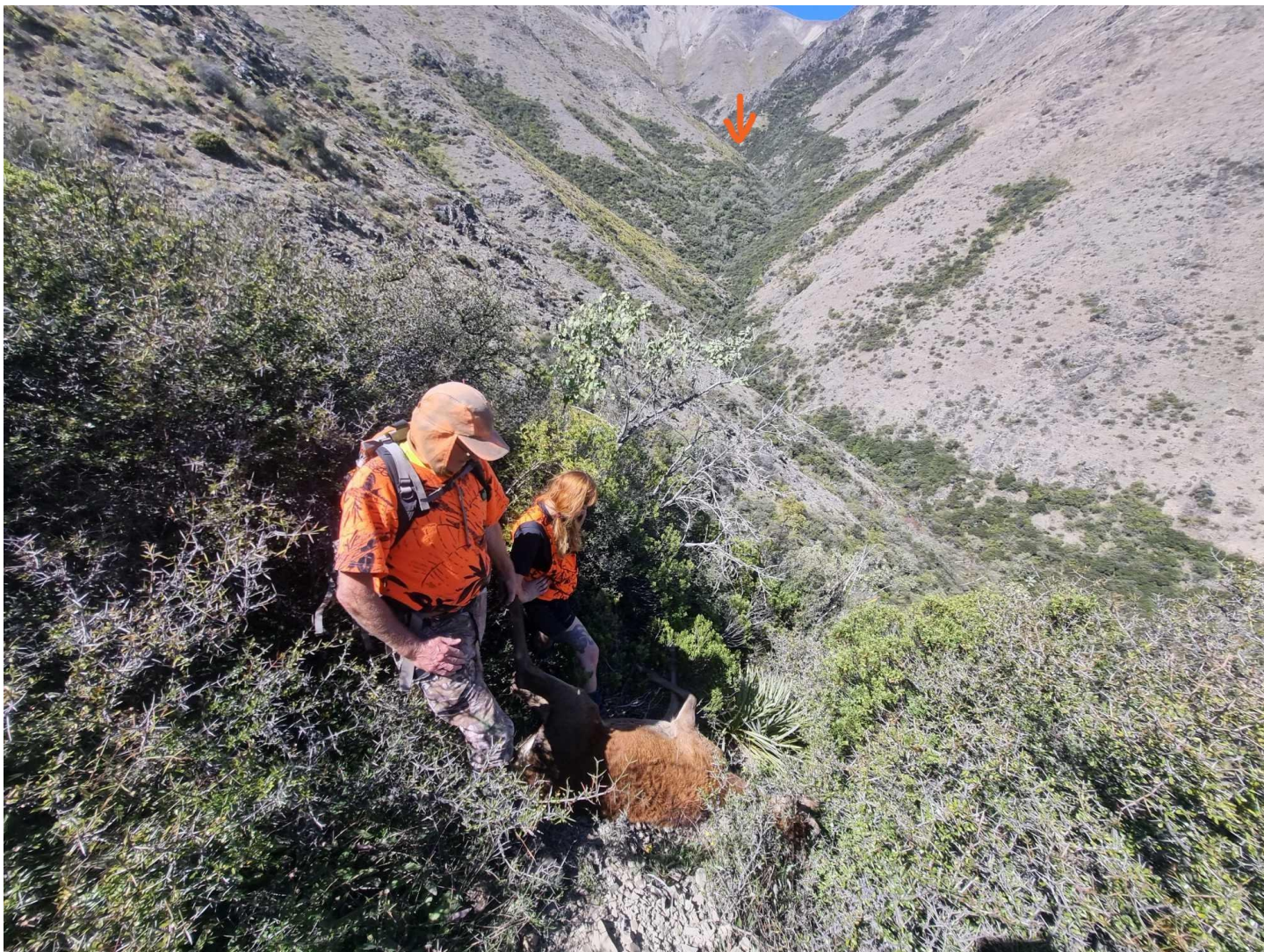


Aha! While a hind and yearling posed unsuspecting & directly below us in a steep gulch, we luckily spotted a spiker sleeping on slip (orange arrow) MUCH closer to ute and civilization.



Classic spiker, asleep on the job...potentially fatal.....





And it was!....orange arrow shows location of hind and co who got the “let off”. It was a tricky open stalk but Ros did the business, closing gap from around 700m to 150 over the course of a nervous hour. No hinds on watch was helpful for us, not the spiker! A 1.30 pm kill meant a race to beat the flies - on a steep, prickly scree and a now very hot day.



The Acheron was very low and very welcome on hot, tired feet.





While denied a deer, Tamar and I shot several small pigs but managed only one retrieval in hard and very prickly conditions – used a chicken recipe to make pork adobo [Recipe Here](#) – simple and tasty, the spiker got more traditional treatment.

We had a great family hunt over a few days with all the usual trials and tribulations, jokes and fun.



Speaking of pork – this naughty pig was wandering home on Jacks Pass road early in the morning! Must have had a pig night on the town!



# Range Matters



## 2024-25 Nelson Outdoor Benchrest Summer Series Sunday 8<sup>th</sup> March Results

### 100m Group Target

	T1	T2	T3	T4	T5	100 AGG	
Greg Couper	0.662	0.840	0.647	0.699	0.906	0.7508	
Graeme Smith	0.932	0.598	0.964	0.484	0.912	0.7780	
Carina Jackson	0.618	0.742	0.823	1.242	0.657	0.8164	
Ian Harper	0.740	0.805	0.993	1.381	0.799	0.9436	
<b>Graeme Vallance</b>	1.463	<b>0.227</b>	0.553	1.122	1.415	0.9560	<b>small group record</b>
Michael Kidson	1.057	0.914	2.174	0.627	0.466	1.0476	
Anne Marie Kidson	1.930	1.039	1.259	1.446	0.899	1.3126	
Simon Cotton	1.373	0.956	1.673	2.334	1.627	1.5926	

### Points

				22-Dec	19-Jan	9-Feb	8-Mar	Total
Greg Couper	7	7.5	7		10	8	8	47.5
Carina Jackson	8	7.5	8		9	7	6	45.5
Graeme Smith	6	5	6	7	7	6	7	44
Graeme Vallance		4	5	6	5	4	4	28
Michael Kidson	4	2	3	3	4	2	3	21
Tony Carter				4	6	5		15
John Ronaldson	2	3			8	1		14
Anne Marie Kidson	5			2	2	3	2	14
Simon Cotton	1	2	2	1	3		1	10
Ian Harper				5	1		5	6
Simon Senior			4					4
Jan Newton	3							3
Donald Jaffray			1					1



# NZDA Nationals Centrefire and Rimfire Benchrest Easter Competition

The above event runs from Good Friday 18<sup>th</sup> to Easter Monday 21<sup>st</sup> April.

The Range **will be closed** to sighting in etc for all these days so if you have a load you are working up, or a rifle you want to be certain is on target – get yourself along to the Range **before** Easter!

If you wish to be involved in the Competition – please contact Graeme (contacts below).



## NORTH ISLAND BENCHREST CHAMPIONSHIPS

Reported by Malcolm Perry, Chairman  
National Shooting Development Committee

Conditions in Nelson in early February were fine and warm but when the shooting started the usual tricky winds arrived.

In benchrest shooting lately it seems that there is one shooter dominant for the week-end. This time it was Mike Peacock from Murchison who took the light varmint aggregate with .3430. Tony Titheridge (Christchurch) was second with .3627 and Ian Owen (Dunedin) was third with .4237. A new shooter, Steve Salter (Auckland) was using a rifle he had never fired before and he was well pleased with himself placing 4th overall with .4504.

It was perhaps an indication of the conditions that no records were broken - as well as the wind there was considerable mirage at 200 yards.

On heavy varmint day it was again Mike Peacock who led the way home with an aggregate of .3108. Second was Ian Owen with .3182, 3rd was a shooter from across the Tasman who spent the weekend with us - Fergus Bailey scored an aggregate of .3576. The light varmint and heavy varmint are



added together to give the Two Gun aggregate, which was again taken by Mike Peacock with an aggregate of .3269, second was Ian Owen with .3709 and third was Tony Titheridge with .3867. 🏆

*Medal winners for the Two Gun Aggregate  
L to R Tony Titheridge 3rd, Mike Peacock 1st,  
Ian Owen 2nd*

**A Blast from the Past!** Familiar faces in NZDA Hunting and Wildlife - April/June Edition, 2003



If interested in using the Range always check the calendar on our website: [Nelson NZDA Range Info](#)

**Always** be aware of and comply with our **Ranges' Standing Orders** – they are posted at the Ranges, but you should refresh yourself from our website:

## Packers Creek – [Standing Orders](#)

Range Use Etiquette - [Etiquette and Golden Rules Click Here](#)

Murchison Community Range - [Standing Orders](#)

## Packers Creek Range Access Reminder:

1. Check website for opening days and hours
2. Be at gate **before** 0900 hrs not after
3. All vehicles **must have** headlights on and conform to convoy (i.e. **follow** the duty officer in and out on Sharlands Road – these rules are set by landowner/operator and are compulsory
4. Ensure you have your membership card and hiviz & hearing protection
5. Its wet up there, avoid driving on the grass

Any competition and event queries please:

call Graeme Smith - 03 5447138 or email [lvhvbr@gmail.com](mailto:lvhvbr@gmail.com)



Our NZDA Packers Creek Range building with competition re-loading going on



# Tall Tales but True! by David Haynes



*“Sometimes you get so good at stalking, you don’t need a rifle, just a quick pair of hands to grab the antlers”. – David Haynes*

The Editor notes – This story was “fact checked” and found to be true.....we now have a deer wrangler in our midst, so advice to David is – get some weightlifter’s talc for better grip and leave the rifle at home!



# What is Your Emergency? - Garmin Statistics - from Garmin website

2024 inReach® SOS Year in Review February 27, 2025

This year saw a shuffle in some of the top activities for inReach SOS message triggers, indicating people are opting to get outdoors and use their inReach devices in diverse ways. We also saw an increase in the reasons for triggering an SOS message, such as natural disasters. Here's the 2024 breakdown of inReach SOS data.

Since 2011, [inReach satellite technology](#)<sup>1</sup> has helped individuals stay in touch globally, send and receive messages outside of cellphone service areas, navigate routes with [detailed mapping](#), and track and share journeys. When necessary, users can trigger an SOS message to the Garmin Response<sup>SM</sup> international emergency coordination center, where trained staff are available 24/7 to respond to SOS messages, track devices, and coordinate with emergency services or others to dispatch assistance.

And with the 2024 release of the [inReach® Messenger Plus](#), users can exchange photo and voice messages via satellite<sup>2</sup> — a milestone for Garmin and a giant leap for individuals who take adventures beyond cellphone service. That includes exchanging photo and voice messages during an SOS, which can give response coordinators the ability to see and hear details of the emergency firsthand.

Where were SOS incidents triggered?

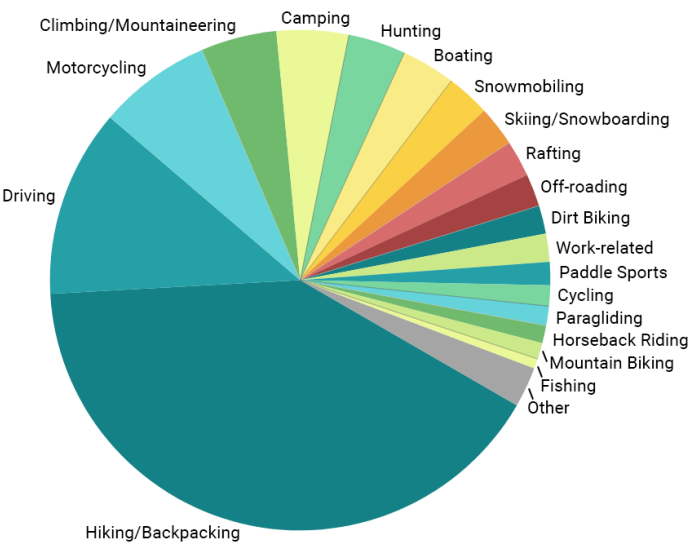




The locations of SOS incidents speak to the scale of the 100% global [Iridium® satellite network](#), the broad use of inReach technology and the [Garmin Response team's ability](#) to make timely connections with emergency resources.

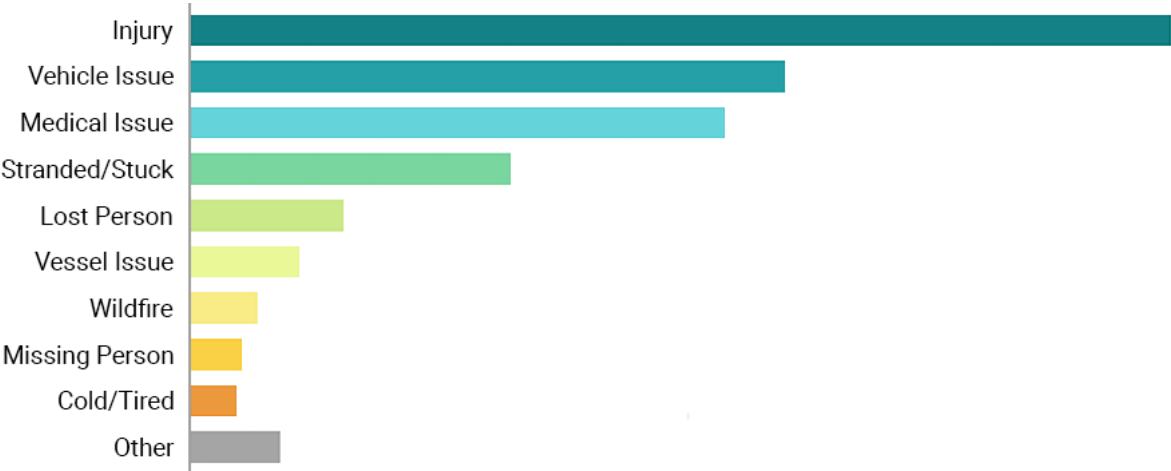
This year inReach devices were used during natural disasters, including hurricanes, flash floods and wildfires. Responses varied from local police and ambulance services for remote car accidents to highly technical helicopter rescues on Mount Everest, the world's tallest mountain. Responses from New Zealand to Norway to Chile to Morrocco were coordinated for bicycle accidents, rattlesnake bites, stranded boaters, snowmobilers caught in avalanches, lost hikers, injured climbers and more.

What were people doing when they triggered an SOS message?



The activity breakdown for SOS incidents in 2024 highlights the many ways customers use their device. Though hiking/backpacking and driving/motorcycling were still the biggest categories, we saw increases in two very different activities: dirt biking and rafting. Other increases came from camping and mountain biking, while seasonally we see upticks in certain activities such as snowmobiling and backcountry skiing/snowboarding in the winter, boating in the summer and hunting in the fall.

Other top activities for SOS triggers included climbing/mountaineering, off-roading, paddle sports and cycling. Why were people triggering an SOS message?

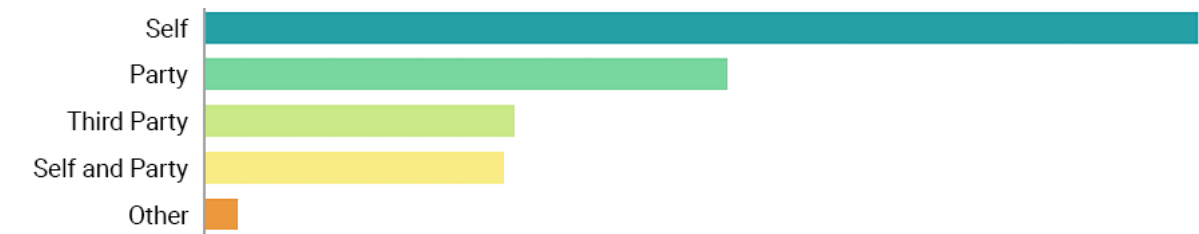




Injuries were again the top cause for SOS incidents this year. Another top reason was motor vehicle accidents and issues, indicating inReach devices can be a valuable tool to include in vehicle emergency kits. Medical issues, stranded persons and lost parties rounded out the top five.

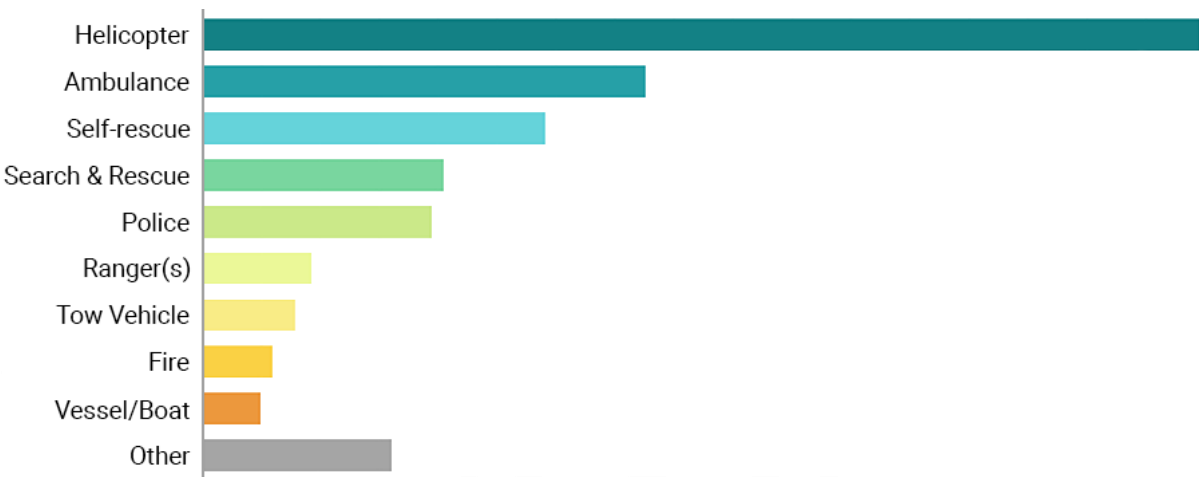
When comparing SOS message triggers year over year, we saw the biggest increase in medical issues, including altitude sickness, heart problems and gastrointestinal issues, among others. Weather events such as hurricanes and wildfires also increased, as well as emergency encounters with wildlife, including bears and rattlesnakes.

Who were people triggering an SOS message for?



An inReach SOS message can be triggered for anyone, or to report emergencies such as wildfires or vehicle accidents. This year an increasing number of SOS incidents were triggered for the actual user, but nearly one-half were still triggered for a party member or third-party individual — indicating how important it is to carry an inReach device for whatever situation you may come across.

What responses were dispatched for incidents this year?



In 2024, helicopters, ambulances, police, and search and rescue teams were dispatched most frequently. We also saw an increase in responses by fire officials — likely due to the increase in SOS message triggers for wildfires.

With the help of Garmin Response, inReach users were also able to self-rescue nearly 12% of the time in 2024. When self-rescue isn't possible, Garmin offers [search and rescue insurance plans](#), which, when purchased prior to an SOS incident, can provide financial reimbursement for qualified search and rescue-related expenses.

Thank you to the responders



Behind these SOS incidents and rescues are dedicated emergency responders giving their time and energy to helping others. Many rescue teams are volunteers, who make immense sacrifices for the benefit and well-being of adventurers in need. As we look back on another year, we give our thanks to the emergency responders and volunteers, who are involved in the rescue process and there for many inReach users in their most vulnerable times.

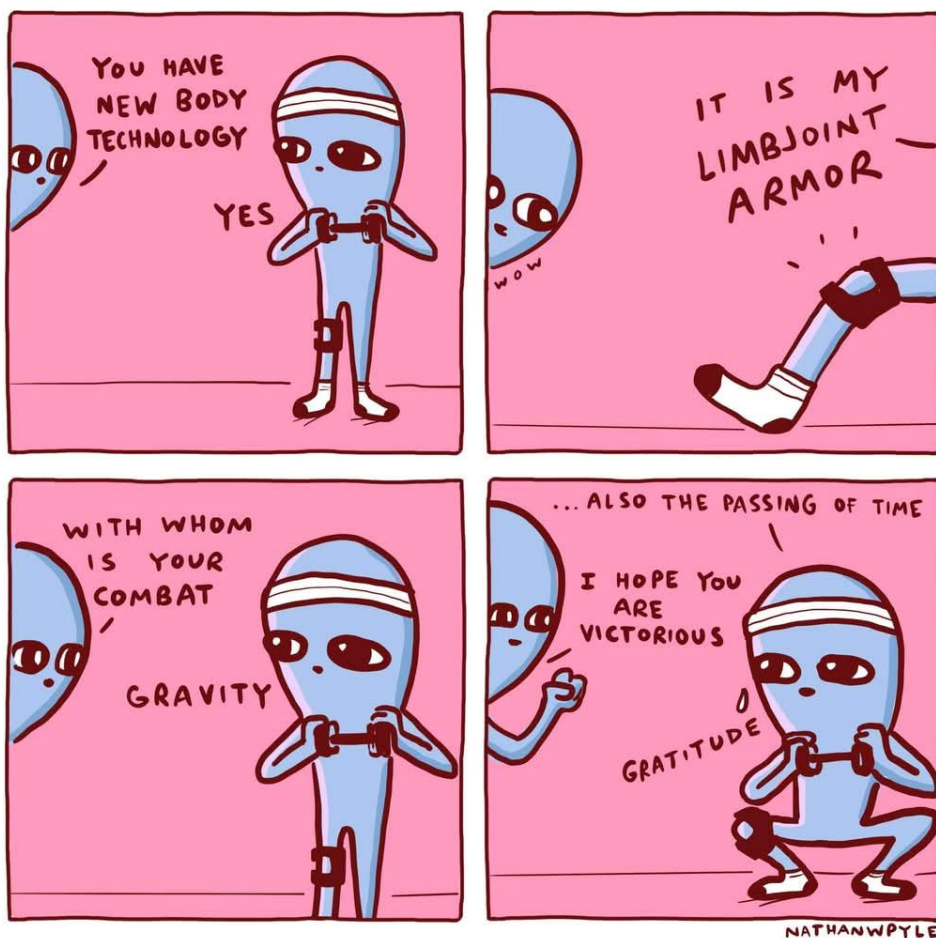
### Here's to safe and happy adventures in 2025.

<sup>1</sup>Active satellite subscription required. Some jurisdictions regulate or prohibit the use of satellite communication devices. It is the responsibility of the user to know and follow all applicable laws in the jurisdictions where the device is intended to be used.

<sup>2</sup>Requires pairing with the Garmin Messenger app on your compatible smartphone.

OpenStreetMap is a trademark of OpenStreetMap Foundation and is used with their permission. This product is not endorsed by or affiliated with the OpenStreetMap Foundation.

## Lighten Up!



A nod to those of us struggling to stay in front of the ageing process this roar.



# Club Night – Wednesday 30<sup>th</sup> April

## Out of Africa



**You missed it last time?....don't let it happen again or you'll be charged!**

Willie MacDonald is now a local hop farmer based in Waimea. In a previous life Willie guided the rich and famous as they hunted big game in Africa.

Enjoy an evening of rollicking yarns and adventure stories from southern Africa.

Listen to Willie as he recounts his adventures and experiences as a hunting guide to the rich and famous.

Learn some of the context to guided hunts and the funding that it channels into conservation and anti-poaching efforts to safeguard endangered species.



**Where and When:** Saxton Field TSN Smallbore Range: 7 - 9 pm  
**Wednesday 30<sup>th</sup> October.**



# Hunting and Fishing April Deals

## for

## Members Only



### VIP APRIL SPECIALS



SMARTWOOL SOCKS RANGE

**30% OFF**



SALTY CREW BUY 1, GET 1

**50% OFF**



(50% OFF APPLIES TO THE LOWER \$ VALUE PRODUCT)

ACR RESQLINK 406 MHZ GPS BUOYANT PLB-400

WAS \$579.99

**NOW \$519.99**



DAIWA SALTIGA 10000- H SPIN REEL

WAS \$1549.

**NOW \$1249**



SHIMANO STELLA SW 6000HGC SPIN REEL

WAS \$1599

**NOW \$1100**



SHIMANO STELLA SW 10000PGC SPIN REEL

WAS \$1649

**NOW \$1149**



SHIMANO STELLA SW 14000XGC SPIN REEL

WAS \$1649

**NOW \$1149**



VIP SPECIALS ARE ONLY AVAILABLE AT NELSON HUNTING & FISHING, NO OTHER HUNTING & FISHING BRANCHES. SPECIAL PRICING APPLIES TO CURRENT IN STORE STOCK ON A FIRST IN, FIRST SERVED BASIS. TO REDEEM DISCOUNT, PLEASE SHOW STAFF YOUR MEMBERSHIP CARD/ID. SPECIAL PRICING ON OFFER FROM 02/04/2025-30/04/2025

99 CADILLAC WAY, ANNESBROOK, NELSON

03 548 1840

NELSON.STORE@HUNTINGANDFISHING.CO.NZ



# Member Benefits – Know & Get Your Share!

Home / What we do /

MEMBER BENEFITS

Home / What we do /

HUNTER INSURANCE

A special insurance package has been developed by NZDA for members\*.

As a NZDA member you and your family can feel safe knowing you are personally covered in a hunting related accident or while undertaking NZDA activities.

Insurance only covers financial members, and is often a requirement when hunting on forestry blocks, so with our insurance cover you can access more hunting opportunities.

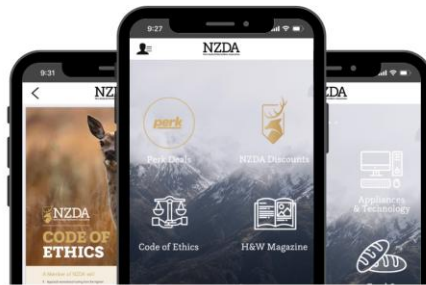
NZDA and all our members are covered by [AIG Insurance New Zealand Limited](#) insurance when hunting and undertaking NZDA activities.

The insurance indemnity cover includes:

- \$10,000,000 for General Liability
- \$10,000,000 for Products Hazard Liability
- \$500,000 for Statutory Liability

\*Excludes Associate Membership

A MAJOR PERK OF YOUR NZDA MEMBERSHIP IS THE OFFICIAL APP.



Save your membership fee by using the NZDA discounts - click here:

[NZDA APP Discounts and More](#)



SUPPORTERS OF NELSON NZDA HUNTS COURSES AND KAI RESCUE [MORE INFO HERE:](#)

[MEAT SOLUTIONS](#)

# Important links

## Red Deer Lodge

- Information on costs and bookings of the Red Deer Lodge at Lake Rotoiti [Red Deer Lodge](#)
- Contact for Accom: [info@rotoitibaches.co.nz](mailto:info@rotoitibaches.co.nz)
- **Always remember to advise you are a Nelson member.**

## 2025 Branch Committee, Information & Contacts

- All details can be found on our refreshed website: [Nelson Branch Committee](#)
- Website [Nelson Branch NZDA](#)
- Facebook [Facebook Nelson NZDA](#)

## Other Key Links - **click on the orange.**

### *Advocacy and Access*

- NZDA National Association [NZDA](#)
- DOC Hunting Portal [Hunting Conservation Land](#)
- Fiordland Wapiti Foundation [Wapiti](#)
- Game Animal Council [GAC](#)
- Outdoor Access Commission [OAC](#)
- Walking Access NZ [WAMS Maps](#)
- LINZ Basemaps [MAPS Link](#)
- 141 Forest Access Information [141 Access and Permit Info](#)

### *Ballots*

- [Haast Ballot](#)
- [Wanaka Ballot](#)
- Southland [Waikaia](#) [Leithen Bush](#) [Wainakarua](#) [Catlins](#)
- Fiordland [Wapiti Foundation Ballot](#)
- Caples & Greenstone [RHA Ballot](#)

### *Firearms and Safety*

- COLFO [COLFO](#)
- NZ Firearms Safety Authority [Te Pureke](#)
- Mountain Safety Council [MSC](#)
- MSC Videos on [everything](#) safety and hunting [Watch Videos](#)
- Avalanche Advisory [Avalanche Advisory Site](#)