



MOUNTAIN ECHO

Newsletter of Nelson Branch NZDA February 2020



This is what granddads do over the school holidays, they take grandkids fishing

From the Editor

Where did the holiday break go?

Well a lot of it was focussed on family and fishing and when those two could be linked the enjoyment was doubled. I took my Nelson based grandson fishing and

www.nzdanelson.co.nz

Contents Overview

Editor Report

Molesworth 1080

Membership
Invoicing

Wangapeka Owen
1080

Hunting the
Blueys

Coxy's Corner

Fish & Game
Report

Red Deer Lodge
Information

Sign up BBQ

18 Feb Fish &
Game Club
Rooms 6pm

Committee
Members

amazingly he caught everything, and grandad caught nothing -or so he reported to his mother.

The weather posed some problems for my boat fishing and the net provided some insurance with a big kingi for Meat Solution's smoker.

Now that we are into February the working year has started and Mike de Gray has a BBQ lined up for 18 Feb. This will also be an opportunity for new members to sign up and existing members having trouble with the national computer system to renew. All these people will need to bring their credit card.

Prior to that a number of the committee will attend a meeting in Blenheim that will deal with the scheduled poison operation on Molesworth. This operation will be as big as the one two year ago and we will be expecting that the lessons of the horrendous by-kill of deer will have resulted in modified procedures for this year's operation.

There is another poison operation that will affect hunting in the Owen/Wangapeka area starting this month and anyone intending fishing or hunting in that area should seek details from the DOC website.

Packers Creek Range is not available at the moment as the fire risk has closed all forest access. This is an annual interruption that most of us have learned to anticipate and get rifles and loads sorted prior to Christmas. Members will be advised formally as soon as we get a clearance to access the range.

That's the end of the bad news as far as I am aware. The very bad news is that parliament is due back and Labour and the police minister have every intention of passing the firearms legislation that most of us tried to forget over the holiday season.

National Office and COLFO have kept us advised as to the political stances adopted by each of the political parties (with the disappointing exception of NZ First). I expect that issues that are bigger than our firearms will dominate the political scene as we move towards the election later in the year but the next few months will receive our attention and we will see which parties stand up for our interests and earn our support.

Articles for the newsletter - We encourage members to send in articles – stories, opinion pieces, issues to debate. Photographs are welcome and when we receive articles warranting national exposure we will advise the submitter accordingly.

I expect to be out of town in March and Richard will be producing the newsletter.

Let me wish you all a productive hunting season and above all -a safe one both on the road and in the hills.

Bill O'Leary

www.nzdanelson.co.nz

This is what young guys chase in the school holidays.



Seventeen-year-old NZDA member Todd Balance did his HUNTS course last year together with his mum. Now he is out hunting solo.

Red Deer Lodge

**Information on costs and bookings of the Red Deer Lodge
at Lake Rotoiti**

Contact the Calders: info@starnaudholidaycottages.co.nz

Use the website at www.starnaudholidaycottages.co.nz

Saying you're a member

Molesworth Poison Operation 2020

The poison operation to cover Bush Gully (21500 H) and Tarndale (40000 H) is planned for this year.

These blocks and adjacent country (down the Wairau to Dip Flat) carry a large and huntable population of deer and hunters are fearful of a repeat of the damage inflicted on the eastern herd two years ago when an estimated 90 percent of the deer were killed.

This concern is shared by the Landcorp and by OSPRI and the projected operation has been delayed while tests on the palatability of toxins in association with deer repellent have been carried out.

OSPRI has stated a willingness to use deer repellent over the entire operational area and this has generally been accepted by other stakeholders.

A meeting on 11February will involve both Nelson and Marlborough NZDA branch representatives along with Natex, GAC and Molesworth Steering Committee.- Greg Couper, Richard Wells and Bill O'Leary will attend.

While there is no doubt that the operation will proceed, hunting representatives will negotiate on toxin sowing rates, operation timings and other mitigating factors that would reduce the inevitable by kill of deer.

Two years ago Nelson Branch supported Marlborough in financing a post operation survey that revealed the shocking result of that 1080 operation. Both branch committees see Molesworth and its deer herd as an iconic herd of special interest and will be working to protect it.

Bill O'Leary

Member Invoice Glitches.

How can we help

Sharon and the accountant have been working hard to reconcile the huge number of payments still sitting in the bank account that they have no idea who or what branch they are for.

It takes an incredibly long time to try and work out, for example when a payment amount is not referenced correctly and has no invoice/ reference or worse still, a wrong reference number (sometimes it's from 5 years ago) as that really makes it very time consuming to be a detective and go back over old records.

There will inevitably be a small number of payments from the last year, that we have no idea who they are from. This may be one reason why the member has NOT received their membership card, so the most helpful option is for them to send a screen print or copy of the payment as it will have the date and exact spelling of the reference when they paid it.

Going forward...

The new invoices will have the following instructions on the invoice but if you can reiterate to members in your next newsletter that it is really important to use this, that is very much appreciated.

Payments via by direct credit to Westpac 03-0558-0139562-04.

- Particulars - Your Name.
- Code - Your Membership number/Branch Name
- Reference - invoice number.

Timing of invoices going out

Due to the time it has taken to set up the new invoices correctly and test them, (lots of technical automation in the background to make it better in the future), we won't be sending the invoices out for 20-21 till the end of February.

We aim to send these out one branch at a time and will advise you as and when they hit the inboxes.

Yes it's late going out, but we feel it is much better to be correct and we are still testing them at this stage.



Dear Whom this may concern,

FURTHER NOTIFICATION - KAHURANGI PREDATOR CONTROL OPERATION

Vector Free Marlborough Limited (VFML) wishes to advise landowners and other interested parties of its intention to aurally apply the toxin Sodium Fluoroacetate (1080) for the purpose of controlling rats and stoats in the Wangapeka – Owen treatment area between 10 February and 30 April 2020. The Wangapeka – Owen operation is part of the wider Kahurangi project which commenced in May 2019. Operations in the Cobb, Heaphy – Gunner and Oparara – Grange blocks elsewhere in Kahurangi were completed during 2019. The Kahurangi project is being carried out by VFML on behalf of the Department of Conservation (DOC) to protect vulnerable native species from introduced predators following a heavy mast (seeding) event in forests.

Description of Area

The Wangapeka – Owen permission takes in approximately 93,697 hectares and includes public land managed by the Department of Conservation as well as several small areas of legal road.

Boundaries extend from Garibaldi Range in the north, to the top of the Owen Valley in the south. The western boundary is loosely defined by the Fenian Range, Stormy Ridge, Scarlett Range, Radiant Range, Allen Range, Matiri Range and Bald Knob Ridge. To the east, the boundary follows parts of the Lookout and Arthur ranges before joining the northern boundary in the Leslie River catchment. The area takes in the catchment of many waterways, with the most notable being the Karamea, Little Wanganui, Owen and Wangapeka rivers. Note, some areas may not receive control.

Maps are available from the VFML website, the DOC website (<https://www.doc.govt.nz/parks-and-recreation/things-to-do/hunting/pesticides/>) and may also be viewed by appointment at DOC offices in Motueka, St Arnaud, Takaka and Westport during business hours from Monday to Friday.

Public Access & Recreational Facilities

Public access to the treatment area is provided by the Wangapeka River Road, as well as a large number of back-country tracks and associated facilities managed by DOC.

Affected roads and tracks in the various blocks will be closed to public access whilst aerial the application of toxic bait takes place, and afterwards until field staff have inspected for and removed most toxic baits. Roads and tracks will be open during non-toxic prefeed application, but access restrictions may be in place for short periods of time. Huts and other back-country accommodation will generally be excluded from bait application during the application of toxic bait to each block, although a number of very low-use sites may be over-sown subject to occupancy and consent conditions, in which case VFML field operatives will be onsite to inspect for and recover toxic baits from open areas afterward.

Affected DOC managed accommodation facilities such as huts and shelters in the treatment area will be provided with alternative drinking water supplies in accordance with Public Health Permit conditions while the application of toxic bait is carried out.

Warning signage and access barriers will be in place at all track entrances whilst the application of toxic bait takes place, and DOC and/or VFML representatives may be stationed at a number of key sites to control access and provide information to visitors. Advisory signage will be installed at key sites prior to non-toxic prefeed application.

Commencement Date

The Wangapeka – Owen operation is scheduled to commence from 10/02/20, beginning with the aerial application of non-toxic cereal pre-feed pellets and followed five or more days later by the aerial application of cereal pellets

containing 1080.

All work is weather dependent and people intending to visit the affected area before 30/04/20 are advised to check the VFML website for the status of the operation and/or seek up-to-date information from the DOC website and local DOC offices.

Bait Description

Pre-feed: Non-toxic cereal based pellet, approximately 20mm long, cinnamon-lured and non-dyed (light brown / fawn in colour).

Toxic bait: Cereal based pellet, approximately 20mm long, cinnamon-lured and dyed green with a toxic loading of 0.15% Sodium fluoroacetate (1080).

All bait will be applied using helicopters equipped with Global Positioning System (GPS) hardware to ensure accurate placement and adherence to consent conditions.

Precautions

This pesticide is poisonous to human and domestic animals. The public are reminded of the danger that toxic baits and possum carcasses pose, particularly to children and dogs.

Children should be kept under strict supervision in the treatment area. Dogs should be kept under strict control at all times and not have access to, or be taken into the treatment area as they are particularly susceptible to accidental poisoning through contact with 1080 bait and poisoned carcasses. The risks of poison carcasses to dogs may extend downstream of the control area.

Game animals should not be sold or taken for eating from within or adjacent to this area until it is declared clear of pesticides.

Warning signs will be erected at all main public entry points and the public are reminded that it is an offence to remove any of these signs. Warning signage will remain in place until monitoring indicates that bait and carcasses no longer contain pesticide residues. Observe the following precautions whenever you see toxin warning signs present:

- **DO NOT** touch bait
- **WATCH CHILDREN** at all times

- **DO NOT EAT** animals from this area
- **DEADLY TO DOGS**, do not allow dogs access to animal carcasses

****If you suspect poisoning**

Contact your local hospital, or dial 111

National Poisons Centre 0800 POISON – 0800 764 766

In the case of a domestic animal being poisoned, contact a local veterinarian.

**For further information please contact the Kahurangi Operation
Controller:**

Vector Free Marlborough Limited

Private Bag 1007, Blenheim 7240

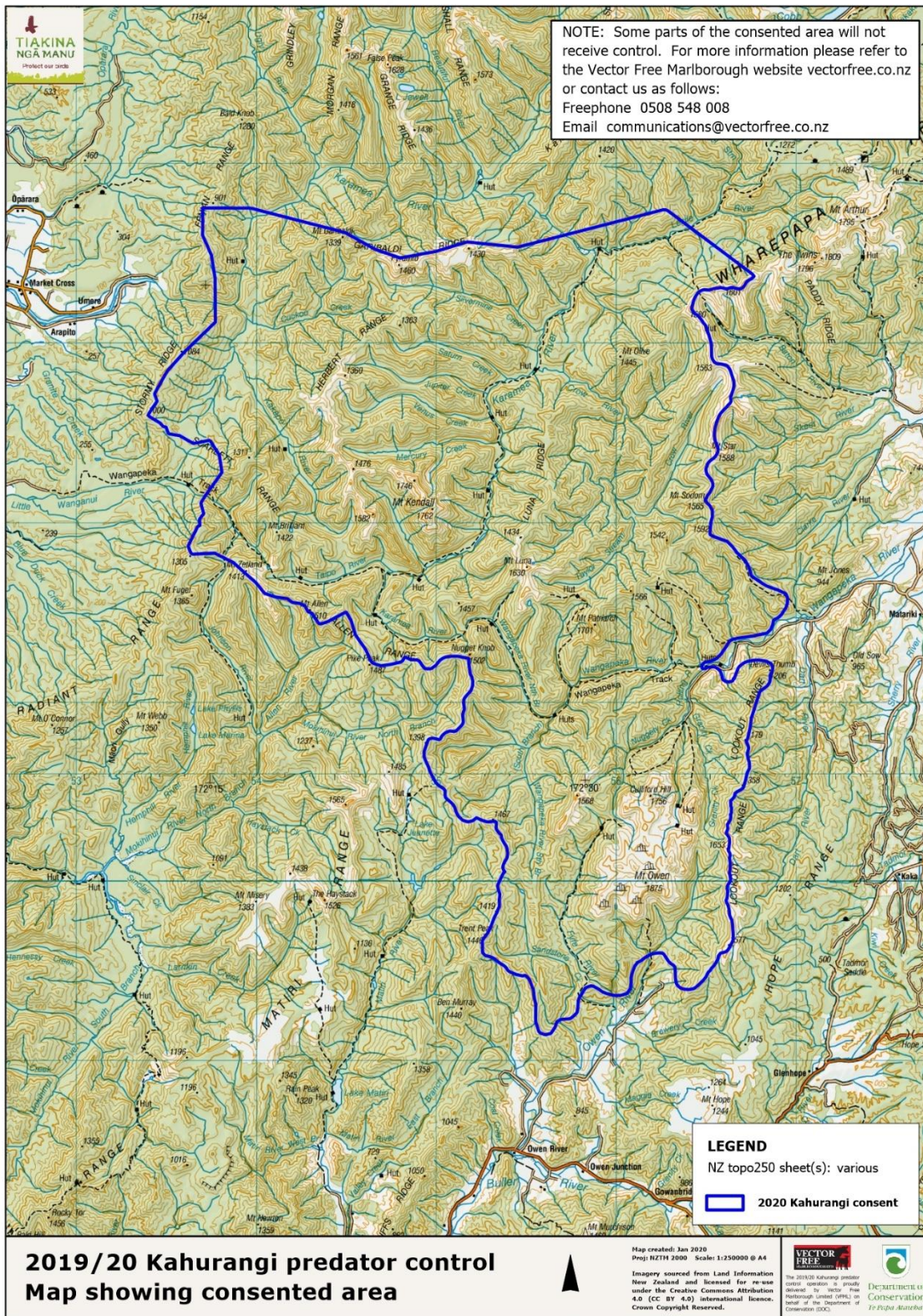
Free phone: 0508 548 008

Email: communications@vectorfree.co.nz

Web: <http://www.vectorfree.co.nz/current-aerial-operations.html>

***Vector Free Marlborough Limited (VFML) is proud to work alongside the
Department of Conservation to deliver the 2019/20 Kahurangi project. To
learn more about VFML' s work please visit our website.***

Copyright © 2019 Vector Free Marlborough Limited, All rights reserved.



Go South and beat the Blues

There are Blue mountains west of Sydney but forget them.....the good ones are closer (just!) in south Otago! Long renowned, managed and hunted for what are now the longest studied, stalked and enjoyed fallow deer in NZ. Possibly also the slipperiest!

The Blue mountains are a mix of exotic plantation forest (lots of Douglas) and classic lower south red beech and broadleaf with pepperwood to die for (or in). The forest contains yellowheads (mohua) and gets 1080'd a bit but with repellent – we have never not seen several deer (often only VERY briefly) in our blocks...and the only place we have seen yellowheads anywhere. They are pretty cool. An RHA, they place is diced up into blocks and balloted year- round by DOC Invercargill who do a bloody great job of it. Our mate Vern, as a Mosgiel boy and long-term Otago branch member introduced us to the Blueys after he moved to Nelson. A little local knowledge is a good thing....and he has hooked us on his old haunts.

This year Ros and I took the plunge to go it alone down there after a bit of a spree on wallys in Canty. We were lucky to get a block for 2 days that we were slightly familiar with having been there once before (the forestry roads are winding and navigation needs GPS for first timers!). The forestry gates all locked with combos which DOC give you on receipt of block. Place was pretty notorious for unpermitted hunting in distant past.

Otago NZDA have a big well equipped lodge nearby which other NZDA members can access at great rates, however this time we stayed at the Beaumont pub....\$25 per person per night in a “twinshare hutch” ...add \$30 for mountain of blue cod and chips!



We recce'd the block afternoon before hunt day and plenty of sign which surprised given obvious number of previous visitors for April rut. So, after the aforementioned feed, cooked by the Icelandic (really!) chef, and leaving cat outside accom for obvious reasons, we had early night to hit block at daybreak.



First view out onto flats just on dawn and hell! immediately a nice dark buck standing gorking about before the hunt had really got started..... Ros wasted no time dropping him with faithful Ruger and on arrival at scene lovely animal ready for the pot or pan! Couldn't be better!

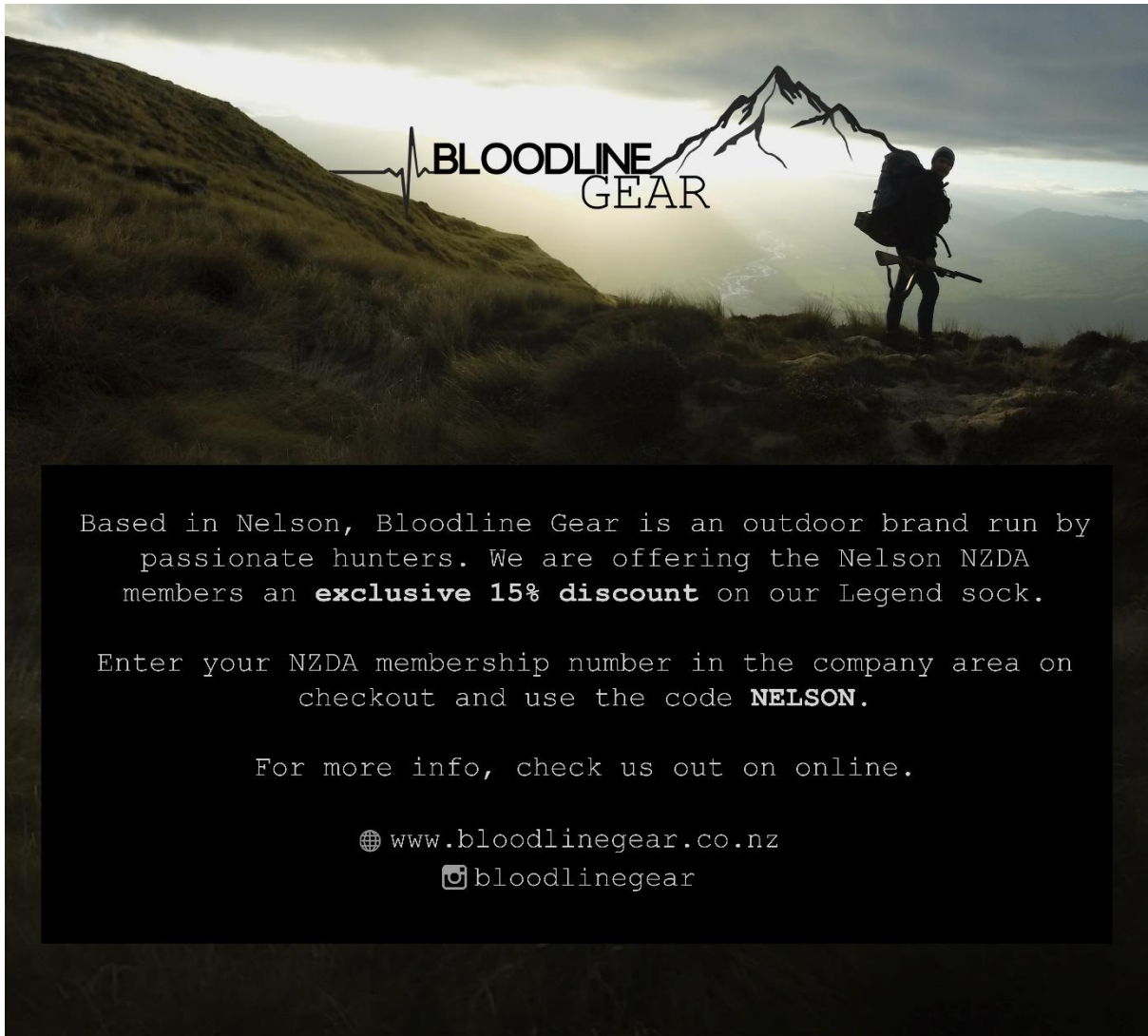
Love the Blueys...love Otago!

<https://www.doc.govt.nz/parks-and-recreation/things-to-do/hunting/where-to-hunt/southland/mainland-southland-hunting/where-to-hunt/blue-mountains-forest-conservation-area/>



Coxy's Corner - Notes for Hunters from Motueka DOC Office

Coxy is currently under a metre of rain at Te Anau and is yet to surface.



Based in Nelson, Bloodline Gear is an outdoor brand run by passionate hunters. We are offering the Nelson NZDA members an **exclusive 15% discount** on our Legend sock.

Enter your NZDA membership number in the company area on checkout and use the code **NELSON**.

For more info, check us out on online.

🌐 www.bloodlinegear.co.nz
📷 [bloodlinegear](https://www.instagram.com/bloodlinegear)

Fish and Game Report



The following recommendations have been made for the 2020/21 Game Bird season

- The Pukeko bag limit be increased to 20 in the Tasman/Golden Bay area
- There be an additional Black Swan season of 8 August to 30 August bag limit 10 in all areas. This would be a 2-season trial.
-

A whole season adult Game Bird licence will be \$98.00 and a junior \$23.00



Nelson Branch NZDA Sign Up BBQ



Tuesday 18th Feb - 6 PM onwards

Fish and Game Clubrooms Champion Road Richmond

Burgers, Steaks and Sausages provided

BYO salads, sauces, beer and driver if needed

Thank you to our sponsors:

Meat Solutions, Salisbury Road Richmond – Processing all our meat

BBQ Chill – Sponsoring the BBQ usage

Check us out on facebook. Give us a like and go into the draw to win one of two venison meat packs.

(TnC's apply)

We will be pleased to meet you!



Kelly Country will be joining us with special prices for NZDA Deer stalkers only.

2020 Committee

Committee:

President: Greg Couper gregc@nzdanelson.co.nz

Vice President: Richard Wells richardw@nzdanelson.co.nz

Secretary: Warren Plum warrenp@nzdanelson.co.nz

Members: Bill O'Leary, Graeme Smith, Graeme Ching, Mike DeGray, Neill Cliffe, John Noakes, Mike Grant, David Haynes, Immo Neumann

Range Committee:

Convener: Greg Couper gregc@nzdanelson.co.nz

Members: Graeme Smith, Graeme Ching, Bill O'Leary

Hazard or Incident Reporting: website email (nelson.nzda@gmail.com) or contact member of Range Committee

Access, Rules and Safety: see website <https://www.nzdanelson.co.nz/range.html> and check your emails for updates or changes to range opening times

Branch Hunts and Activities:

Convenor: Mike DeGray miked@nzdanelson.co.nz

Hunts Courses:

Website: <https://www.nzdanelson.co.nz/hunts.html>

Convenor: Bill O'Leary b.f.oleary@xtra.co.nz

Members: Lawson, Alistair Ching

New members:

email nelsonnzda@gmail.com or go to webpage <https://www.nzdanelson.co.nz/index.html>

The Mountain Echo

Bill O'Leary and Richard Wells