

Mahitahi Colab Māpua

Design Presentation

Version 1 25.04.25 draft for review

Version 2 11.05.25 showing preferred colour scheme and updated plans



Collaboration for Innovation

Design Brief

The Mahitahi Colab is all about COLLABORATION for INNOVATION, fostering bold and aspirational innovation via our entrepreneurial community and partnerships in a space dedicated for thinkers and doers.

It will be a place to CONNECT, COLLABORATE and FOCUS In a fit for purpose, inclusive community environment.

The colab needs to be a destination, somewhere that provides something that working from home does not.

The name of the game is flexibility, with spaces able to adapt through the day and over time to how people want to work.

The feedback from the survey about what people are hoping for in the Colab in Mapua is summarised below:

- **Quiet Space:** Many respondents emphasized the need for a quiet space to work, take phone calls, and conduct meetings without distractions.
- **Connections and Networking:** A significant number of respondents expressed the desire for opportunities to connect with others, network, and be part of a community.
- **Office Facilities:** Access to office facilities such as printers, scanners, monitors, and reliable internet was frequently mentioned as a requirement.
- **Alternative to Working from Home:** Several respondents highlighted the need for a workspace away from home to create a separation between work and home life.
- **Meeting Rooms and Collaboration Spaces:** The need for meeting rooms, collaboration spaces, and areas for confidential phone calls was also commonly mentioned.

To be successful, the design needs to be better than the workspaces people have at home, by creating a place that they feel welcome, happy, healthy and productive.

Design Approach

To create happy, healthy productive workplaces, they need to be designed in a way that supports wellbeing. Biophilic Design promotes wellbeing by connecting the interiors to Nature through choices in colour, material, textures, plants, daylight and views.

The Tasman region is an area of diverse ecosystems with varied terrain from **FOREST TO SEA**. The proposed design approach will draw on these two themes to connect the project to the land and locality.



Look & Feel



- Pared back
- Natural
- Industrial
- Vibrant
- Sustainable
- Enduring



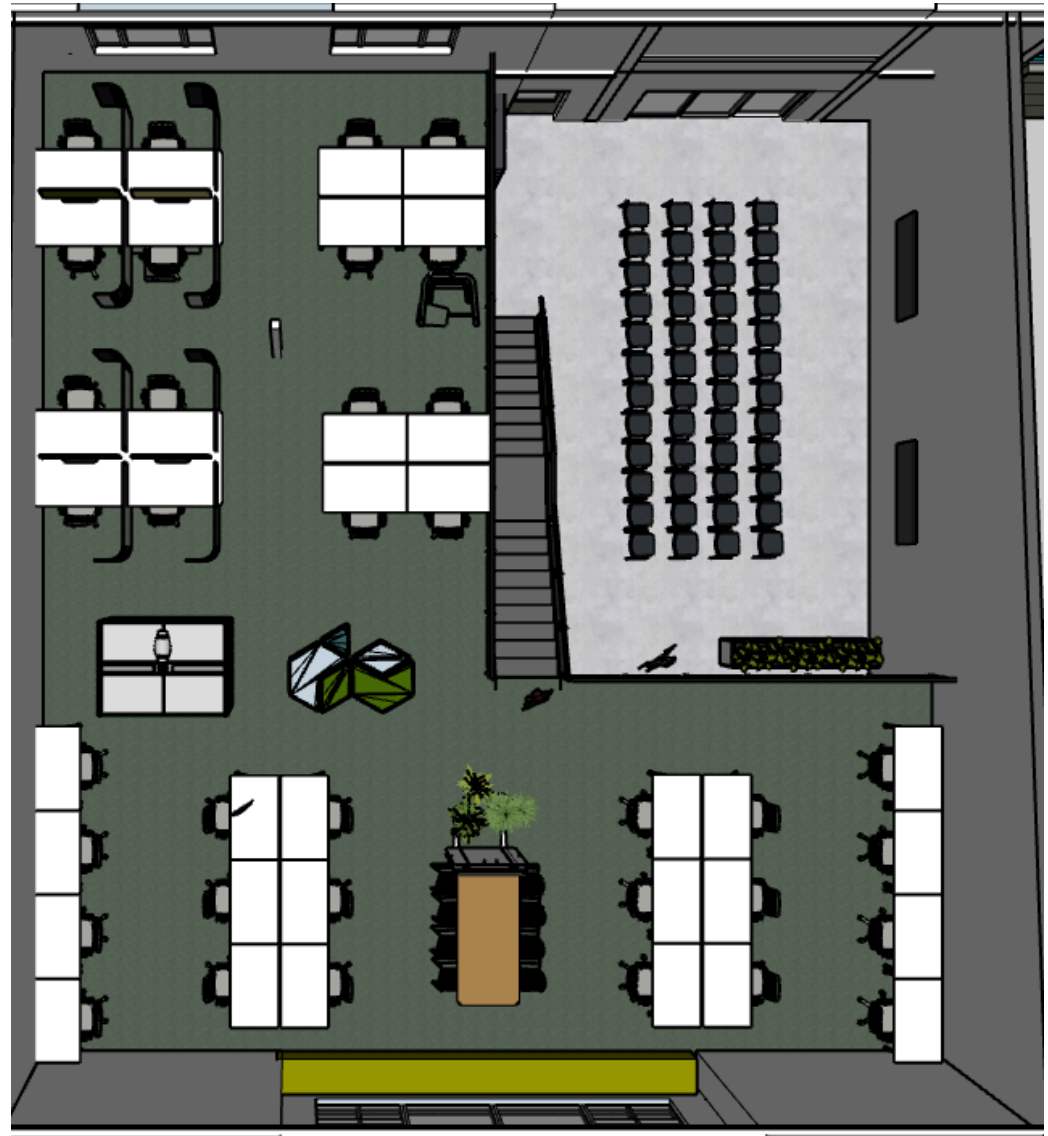
Ground Floor Plan showing hot desk set up



Ground Floor Plan showing Events set up



Mezzanine Plan



Floor Finishes Option : Forest Floor



Marmoleum Marbled
slate grey

Predominantly green, with hues of various shades of green , brown and elements of sand

Polished concrete – salt and pepper grind

Product inspiration: Inzide Human Connections Granite and Urban Retreat collection in Grass, Ivy, Lichen & Moss



Note: The final look
will not be known until
it the carpet is laid as it
is made up of offcuts.

Carpet Inspiration – Heaphy Track

Finishes- Kitchen



Ply laminate with ply edging

Grey metallic write on splashback

White cabinetry with stainless steel handles

Ply edge to benchtop

Coloured laminate benchtops and face of island



Note: final finishes tbc

Reception/Collaboration Zone/Event Space



Kitchen Hub



View from collaboration zone



View from back to collaboration zone



View of island



View from main entry point

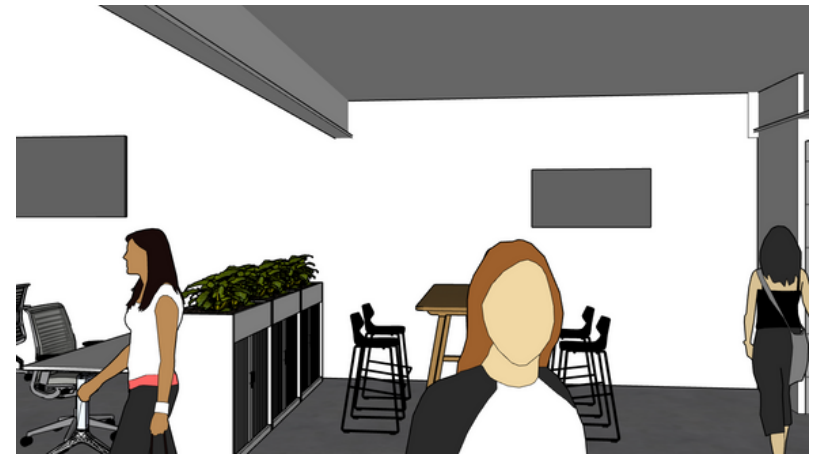
Mezzanine



Branding/Signage Opportunities



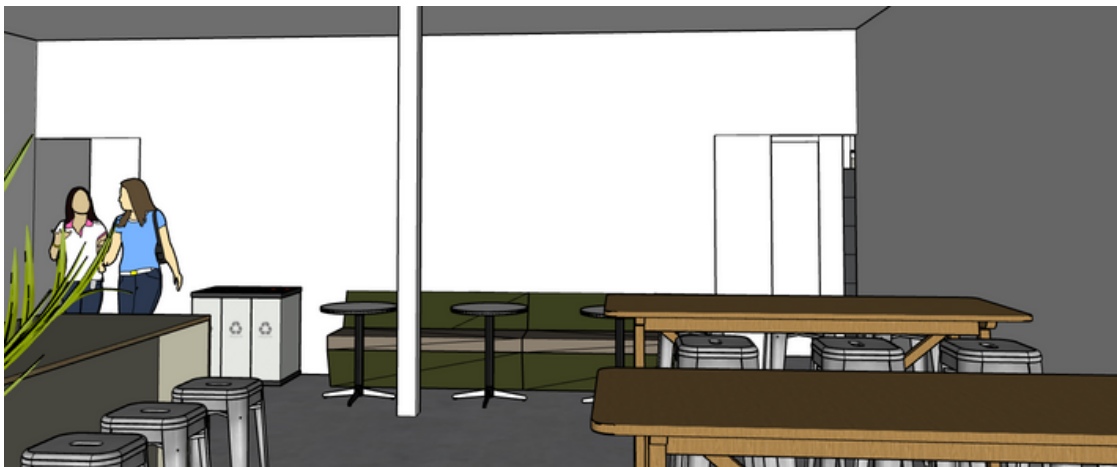
Exterior



Reception



Stair wall

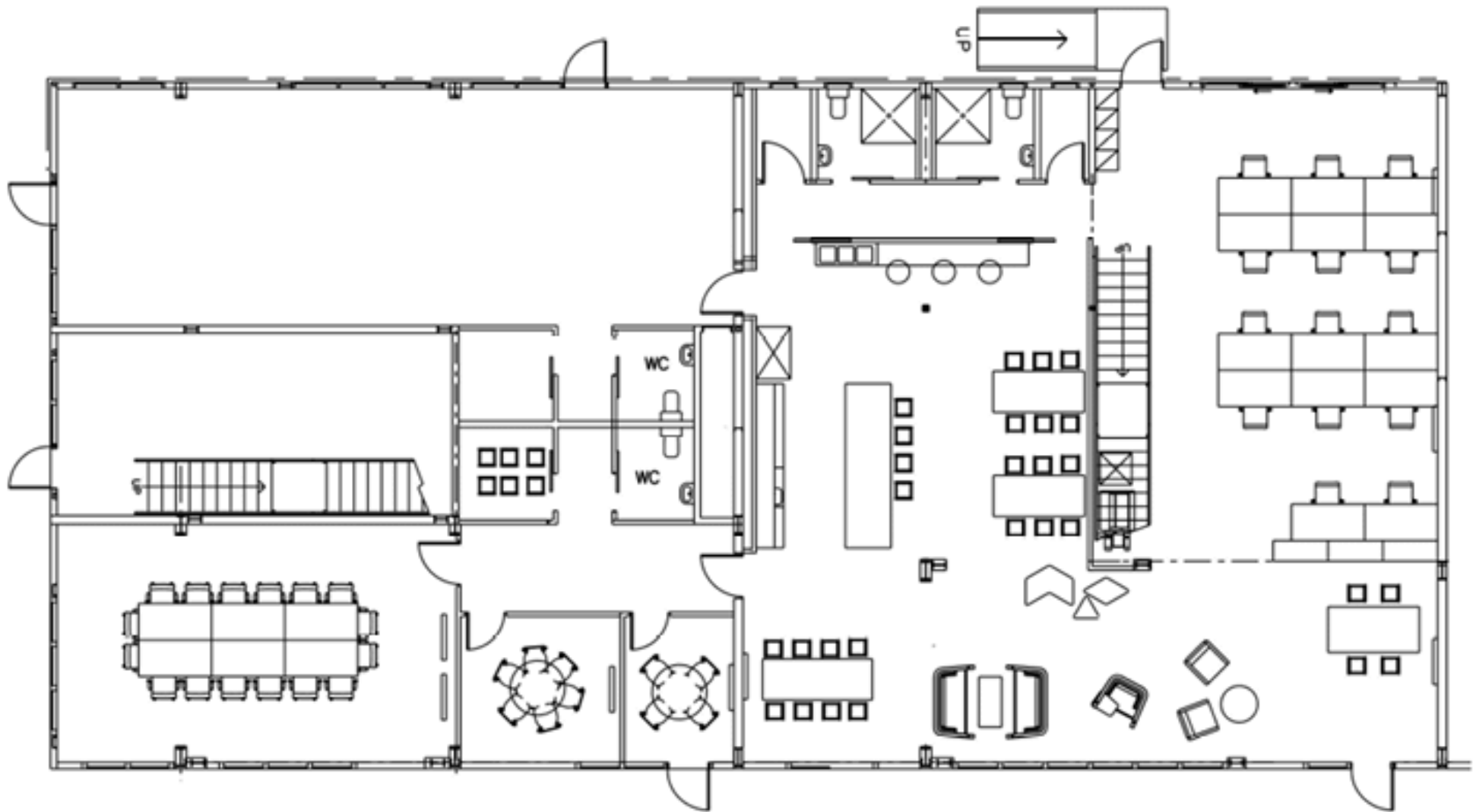


Back wall of kitchen hub

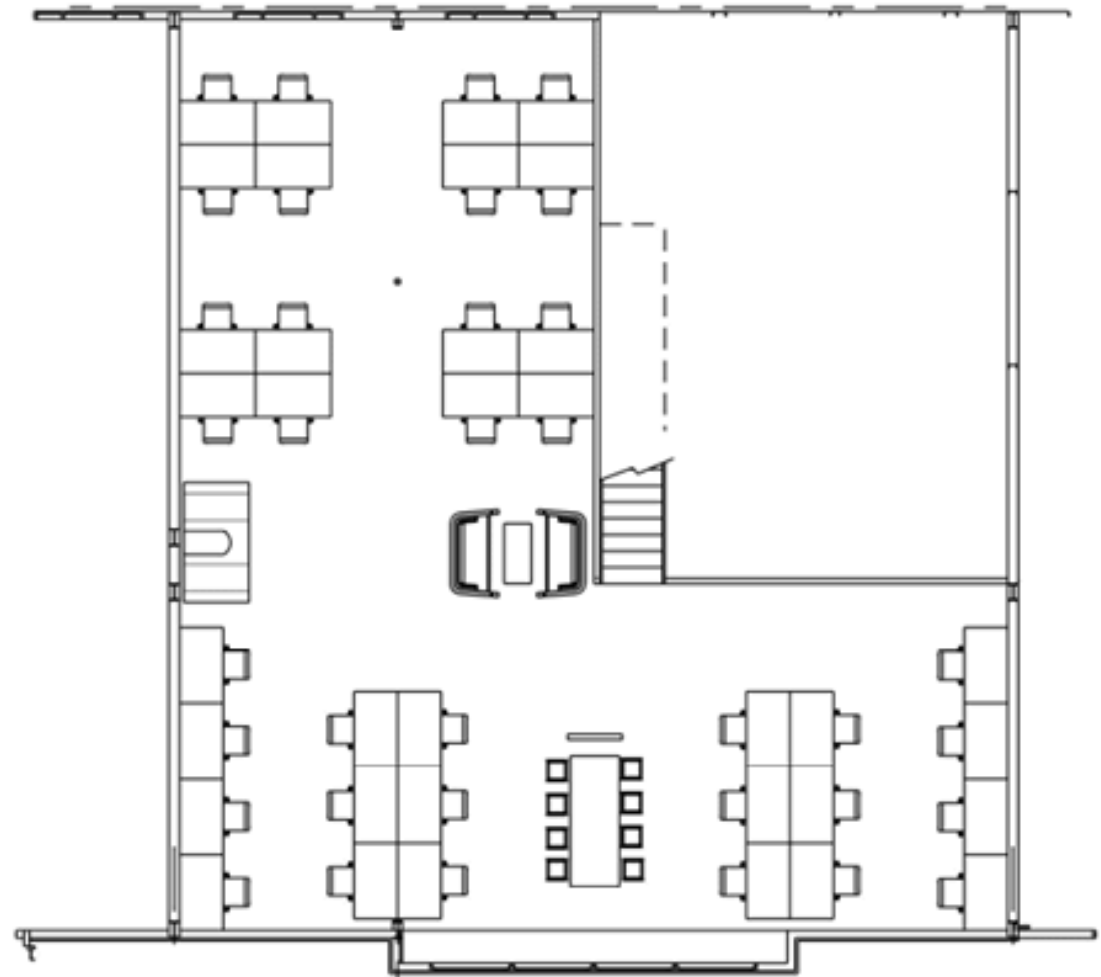


Side wall of kitchen hub

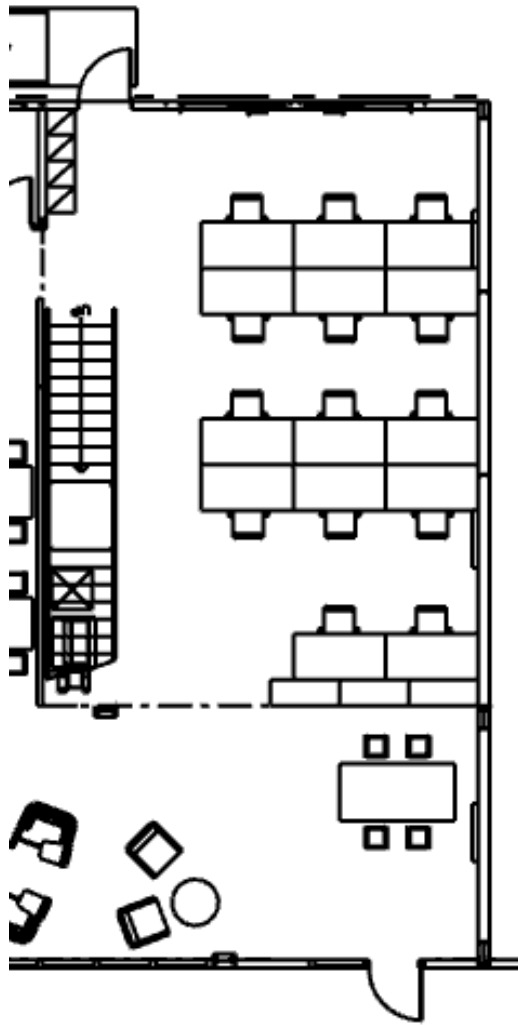
Plan – Ground Floor



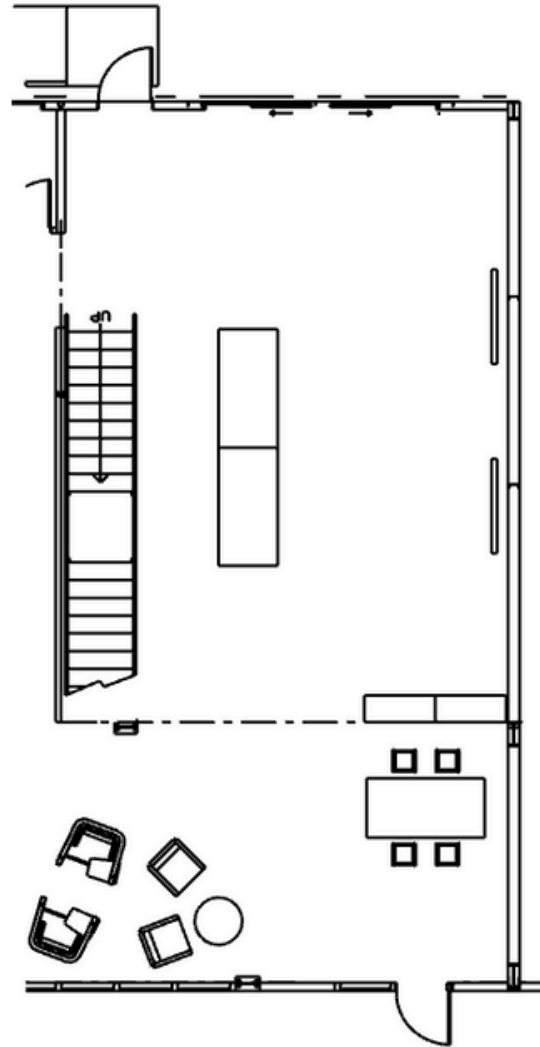
Plan – Level 1



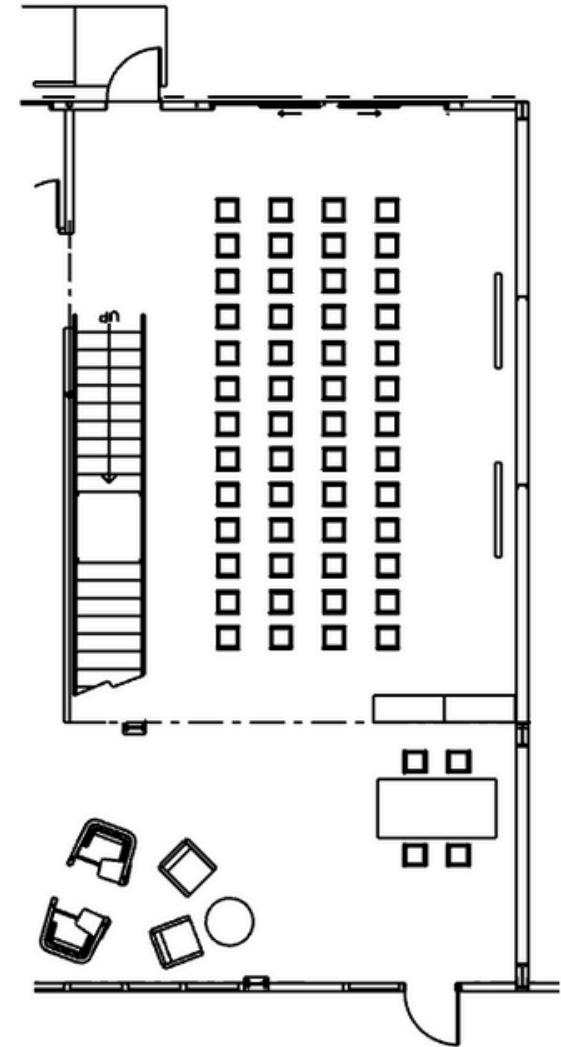
Event Space Layouts



Hot desks



Standing function with
bar/serving tables



Theatre style