



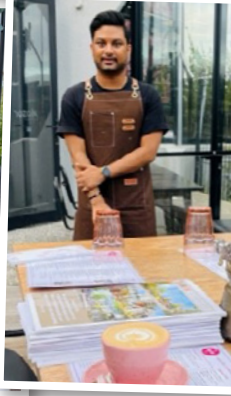
Committee Update

Mini Networking event

Following the findings of the recent NLBA Covid19/Strategy survey, the executive agreed some new actions in the

planning. One of those is to host mini-networking events. In the past month, there have been three events to share results of the findings of the recent survey and to connect business to

business. Thank you to Little Treats and Ruby Café for supporting the business networking activity and also to members who have participated. Below are some of the photos of the events:



Support the NLBA

The executive and management are mindful that our business people are still working through challenging times. Acknowledging our members and associates is important as we understand, that working together to promote New Lynn and to Shop Local are a focus for all of us. The management team have been promoting a Shop Local campaign, this is a result of Covid19 and our strategy to promote to our local trade area. The work that has been underway is based on a premise that our local community are as much a part of us as are the members and the benefits of shopping local are great. These graphics are part of our advertising and promotional plan as is the upcoming Love Local – a social media video promotion of our businesses.

NEW LYNN BUSINESS ASSOCIATION

GRAB A DEAL

15TH JUNE TO 7TH AUGUST 2022

GREAT DEALS, DISCOUNTS AND SPECIAL OFFERS FROM PARTICIPATING NEW LYNN BUSINESS ASSOCIATION FOOD OUTLETS, RETAILERS AND BUSINESSES.

SAVE \$\$\$!

GET YOUR FREE BOOKLET HERE!

NEW LYNN BUSINESS ASSOCIATION
SHOP LOCAL AND SAVE MONEY
PLEASE HELP YOURSELF

Shop in the New Lynn Business Association Area during the Weekend of Mother's Day 7th, 8th, 9th of May and you may be the recipient of a \$10 voucher*

SHOP NEW LYNN

500 TO BE GIVEN AWAY FOR MOTHER'S DAY!

\$10

SHOP NEW LYNN

Random Act of Kindness Voucher

This voucher entitles the holder to \$10 off the total purchase with a minimum spend of \$30.

*For terms & conditions go to www.newlynnbusinessassociation.net.nz

PO BOX 16456, New Lynn, Auckland 0640
email: newlynnbid@gmail.com
www.newlynnbusinessassociation.net.nz

WANT TO KNOW MORE

NEW LYNN BUSINESS ASSOCIATION

3 Fabulous CHRISTMAS HAMPER GIVEAWAYS

To enter just spend \$10 at any participating NLBA member business between Tuesday 23 November and Monday 20 December 2021*

*conditions apply, see conditions for entry on page 4.

PO BOX 16456, New Lynn, Auckland 0640
email: newlynnbid@gmail.com
www.newlynnbusinessassociation.net.nz

WANT TO KNOW MORE

SHOP NEW LYNN

- & -

support local businesses

SHOP LOCAL AND SAVE MONEY
SUPPORT THE PEOPLE WHO MAKE
COMMUNITY A BETTER PLACE TO
LIVE, SHOP, EAT, WORK AND PLAY

NEW LYNN BUSINESS ASSOCIATION

NEW LYNN BUSINESS ASSOCIATION

KIDS DRESS-UP COMPETITION

(online and in person)

IN-PERSON EVENT
10am to 12pm
Saturday 11th December 2021
Memorial Square, New Lynn
Free Entertainment, Santa and more!

ON-LINE EVENT
On-Line competition runs from Wednesday 1st December to Sunday 12th December 2021
To enter visit www.facebook.com/NewLynnBusinessAssociation

PO BOX 16456, New Lynn, Auckland 0640
email: newlynnbid@gmail.com
www.newlynnbusinessassociation.net.nz

WANT TO KNOW MORE

Avondale to New Lynn Shared Path

New Lynn to Avondale shared path underway

The contract for the work has been awarded to Dempsey Wood. The shared path will cost \$44.3m. It is pleasing to see a kiwi business leading the contract. Dempsey Wood and other local businesses contribute directly back to the area through these works.

The New Lynn Business Association is pleased that this also connects business and that the environment aligned to the works are improved. It's a worthy and good piece of infrastructure for locals whilst there have been some disruptions, it has been well worth the wait says Chair Bahti. Congratulations to all, enjoy the new pathway connecting us as a community.

Official blessing 1st June 2022

Councillor Mulholland attended the morning blessing and opening of the New Lynn Shared Path from New Lynn to Avondale.

The 2.9km path is a joint project between Auckland Transport, NZ Transport Agency, Auckland Council, and Whau Local Board. It will create a continuous shared path linking New Lynn Station, Avondale Station, Waterview Shared Path and the Northwestern Path which runs alongside the Northwestern Motorway.

Councillor Mulholland says that the path will support connections between the two Whau Ward communities Avondale and New Lynn. "It is a great link between communities, access to the rail



network and an important addition to the walking and cycling paths in Tamaki Makarau."

Councillor Mulholland says that whilst this is an great project she shares an important message; this fantastic walkway and cycleway connecting people belongs to the community, it is the people who have paid for this project. I feel strongly that we need to thank all workers and teams involved but the biggest thanks go to the public for their contribution.



Wolverton culverts project update

The work on the Wolverton culverts replacement project is almost complete. Replacing the two culverts was a massive piece of construction that has taken 2 years to complete.

While infrastructure projects are not often glamorous, they are often vital in keeping cities functioning. This is the case with the culverts project.

- Both culverts were well past expected
- lifespan as Culvert 1 was constructed in
- 1984 and Culvert 2 in 1968. The design of
- the replacement culverts will ensure they
- are much more robust and better able
- to cope with predicted climate changes
- and severe weather events.

- The viewing platform looking over
- Culvert 2 is still to be restored along with

- some planting around the area.

- Auckland Transport would like to
- thank the residents and road users
- of Wolverton Street for their patience
- during the construction of the culverts.
- The road is expected to be back to
- normal within 2-3 weeks.

Culvert 1 next to the St John station



Culvert 2 next to the Gull station





NEW WORLD

New recycled trolleys at New World New Lynn

New World New Lynn are doing their bit to push for a more sustainable world, and to continue to provide innovation for their customers, with the introduction of brand new trolleys made from recycled milk bottles.

The large 180L trolleys are made from 152 milk bottles and smaller 90L trolleys are made from 74 milk bottles. These trolleys are 30% lighter and easier to manoeuvre than the previous models. They also offer health & safety benefits for customers when pushing them around the store and for staff carpark managers during collection.



GRAB A DEAL

15TH JUNE TO 7TH AUGUST 2022

SAVE \$\$\$!

GREAT DEALS, DISCOUNTS AND SPECIAL OFFERS FROM PARTICIPATING NEW LYNN BUSINESS ASSOCIATION FOOD OUTLETS, RETAILERS AND BUSINESSES.
SHOP LOCAL • SUPPORT LOCAL
SHOP NEW LYNN

 NEW LYNN BUSINESS ASSOCIATION

GRAB A DEAL

SHOP LOCAL AND SAVE
GREAT DEALS, DISCOUNTS & SPECIAL OFFERS

SAVE \$\$\$!

FREE
VOUCHER BOOKLET
PLEASE HELP YOURSELF



15TH JUNE TO 7TH AUGUST 2022

SHOP LOCAL • SUPPORT LOCAL • SHOP NEW LYNN

NLBA Executive Committee



Vish Bhati
Barfoot & Thompson
CHAIRPERSON
022 600 2600



Nicola Donald
The Wardroom
DEPUTY CHAIRPERSON
09 827 6528



Norah Ding
Little Treats Café
TREASURER
09 222 1166



Scott Clement
Beds R Us New Lynn
COMMITTEE MEMBER
09 218 9644



Beryl Jurelich
Covers Hire
COMMITTEE MEMBER
09 826 0004



Dale Mays
New Lynn RSA
COMMITTEE MEMBER
09 827 3411



Vikatolia Misa
McDonalds New Lynn
COMMITTEE MEMBER
09 827 3879



Amelda Jeffery
CONTRACT MANAGER
021 264 3188



Tracy Mulholland
CONTRACTOR
021 287 2296



NEW LYNN
BUSINESS ASSOCIATION

Office: 25 Veronica St, New Lynn, Auckland
(above Little Treats Cafe)
Phone: 021 264 3188
PO Box 15456, New Lynn, Auckland 0640
Email: amelda@nlba.co.nz
www.newlynnbusinessassociation.net.nz
facebook.com/newlynnbusinessassociation

NEW LYNN
MEANS BUSINESS



WOULD YOU LIKE TO SHARE SOMETHING IN OUR NEWSLETTER?

If you would like to have an advert in the newsletter or share some information please send your submission to the NLBA Newsletter team via newlynnbid@gmail.com