



## Committee Update

Hello everyone, welcome to this month's edition of the NLBA newsletter.

As we all work through the fallout of the pandemic and face many local challenges, we are seeing the result of what is a significant economic impact worldwide and in terms of the economic impact on kiwis. The NLBA executive committee and management have been very mindful of the work we do and have you our members and your customers in mind. Changes have been made to the way we work and planning future events for you the community, we have revisited some of the events and will share these event changes.

The team at the NLBA have generated a whopping 62 tenants participating in this year's FREE Grab A Deal voucher book. There are so many great deals for community! There were 20,000 booklets produced and we thank all the good

New Lynn BID tenants who participated. Shop local and enjoy the specials on offer. More details to follow.

We, like many people are aware of the water crisis in Auckland, yes, there has been a lot of rain in the past couple of weeks but for now, there is still a shortfall of water leading into next summer. To make sure we are all doing our bit, an article from Watercare is shared in this newsletter.

A summary of the status of the Woolverton culvert works is also included in this letter for your information. For further details on this substantial project please go to the Auckland Transport website.

On a final note, on behalf of the committee I would like to thank all of our retailers, property owners and local business people for their continued dedication to making New Lynn a great



place to shop, work and play. Together, we will work through the economic situation and together we will come back stronger.

**Sitendra Singh**  
Chairman NLBA

## NLBA Grab-a-Deal promotion

The New Lynn Business Association is currently running its third Grab-A-Deal campaign. The aim of the promotion, which runs from 24 June to 15 August, is to encourage the community to support local businesses. 20,000 free booklets have been distributed. The booklet contains over 60 vouchers offering discounts and deals from local businesses including restaurants, bars and cafés, medical and health service providers, professional services, retailers and many more.

**Now more than ever local businesses need your support so grab a voucher book and support your local businesses!**



Tracy got herself a smart new scooter from Woottons Auto Accessories

Alex treated himself to coffee and a delicious muffin from the Wardroom

Gaëlle had her watch battery replaced at Precision Watch Company

NEW LYNN BUSINESS ASSOCIATION

# GRAB A DEAL

**GREAT DEALS, DISCOUNTS and SPECIAL OFFERS from OVER 60 NEW LYNN BUSINESSES!**



**FREE VOUCHER BOOKLET PLEASE HELP YOURSELF**

24 JUNE to 15 AUGUST 2020

SHOP LOCAL – SUPPORT LOCAL – IT'S YOUR COMMUNITY

# SHOP LOCAL

# GRAB-A-DEAL FROM A LOCAL BUSINESS

# Stage one water restrictions are now in force

## Commercial water FAQs

### Why is Auckland's water supply strained?

Since the start of the year, the region has received significantly less rainfall than normal. This is having a big impact on our water supply. On 15th April, the total volume of water stored in our dams dropped below 50 per cent for the first time in more than 25 years. We need to preserve what's left.

### Who do restrictions apply to?

The restrictions will apply to all commercial and non-domestic water users that use water from the Auckland metropolitan network.

### What are the restrictions for commercial and other non-domestic water users?

Commercial and other non-domestic water users cannot:

- Use an outdoor hose or water blaster unless it is for a health, safety, emergency or biosecurity reason
- Operate a car wash unless it uses recycled water
- Water sports fields, plants or paddocks unless they have an irrigation system that is fitted with soil moisture or rain sensors.

### What are the rules for the outdoor cleaning industry?

#### You can:

- Use a water blaster on a surface to prevent slipping
- Use a hose or water blaster to meet COVID-19 cleaning protocols
- Fill up a bucket of water from an outdoor tap to clean windows
- Use non-potable (untreated) water from a tanker or rain tank

#### You cannot:

- Use a hose or water blaster to clean a building or roof

### What are the rules for the construction industry?

#### You can:

- Use a water blaster on a surface to prevent slipping
- Use a hose or water blaster to meet COVID-19 cleaning protocols
- Use non-potable (untreated) water from a tanker or rain tank/stormwater source for construction activities

#### You cannot:

- Use a hose or water blaster to clean a building or roof
- Use potable (treated drinking) water for dust suppression

### What are the rules for the automotive and marine industry?

#### You can:

- Wash vehicles or boats using buckets of water
- Wash vehicles or boats using a non-potable (untreated) water supply from a tanker or rainwater tank

#### You cannot:

- Wash vehicles or boats using hoses and water blasters connected to your Watercare supply
- Operate drive-through car washes unless they use recycled water

### What are the rules for sports clubs and all fields?

#### You can:

- Water fields using an irrigation system that is fitted with a soil moisture sensor or rain sensor
- Water fields or gardens using a non-potable (untreated) water source, like a rainwater tank, stormwater or bore supply
- Water blast surfaces to prevent slips

#### You cannot:

- Water fields and plants using hoses or regular sprinklers
- Use a hose or water blaster to clean a surface, building or roof for aesthetic reasons

### What are the rules for the carpet cleaning industry?

#### You can:

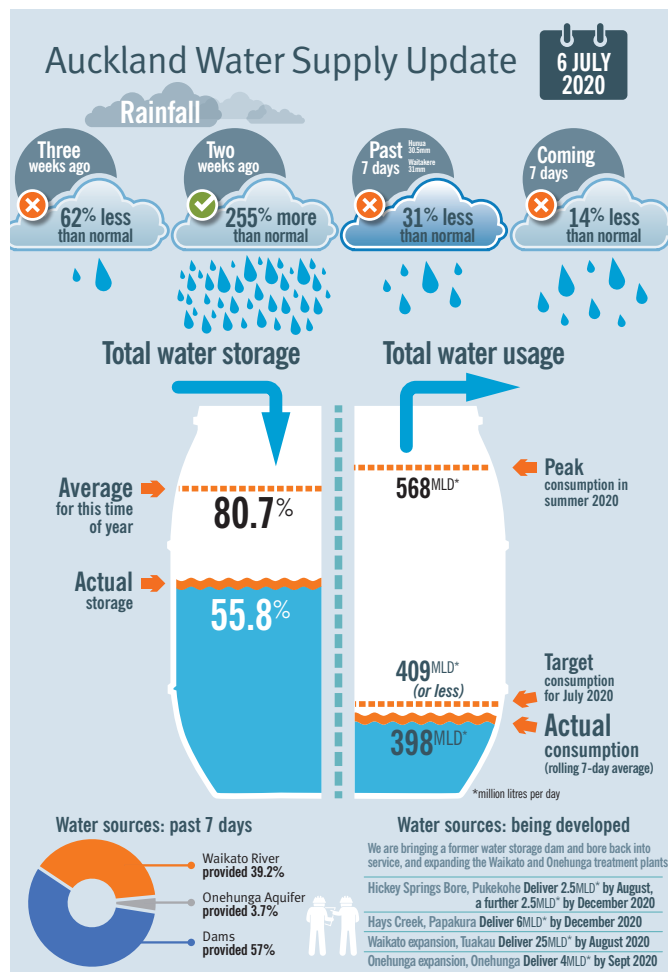
- Collect/use water from taps located inside or outside the home/facility so long as you do not use a hose to do so

### What is considered a valid health, safety, emergency or biosecurity reason for using an outdoor hose or water blaster?

This could include a number of scenarios ie: the prevention of slips, or cleaning in preparation for return to work after COVID-19 Level 3 lockdown.

### Can I use a standpipe?

We have suspended access to our fire hydrants. This means you cannot use



your standpipe to access water until further notice. At this stage we are not recalling standpipes and will trust that you support Auckland's water savings efforts by refraining from using them. Your hireage contract will be put on hold and extended by the duration of the suspension when restrictions are lifted. Anyone found to be using a standpipe while restrictions are in place will have it confiscated immediately.

### How can I learn about using water wisely?

Our website [www.waterforlife.org.nz](http://www.waterforlife.org.nz) has lots of tips on how to reduce your water use.

### If I want more information about non-potable water sources who should I contact?

Please click here to visit the Auckland Council page or email [nonpotablewater@aucklandcouncil.govt.nz](mailto:nonpotablewater@aucklandcouncil.govt.nz) for more information.

### If I have a question related to the drought or water restrictions, who do I contact?

Please email your enquiry to [save-water@water.co.nz](mailto:save-water@water.co.nz)



# Wolverton Street culverts replacement project update

Work on replacing the culverts on Wolverton Street is now well underway. Excavation of the channels for the new culverts has begun so you will see cranes and other large machinery at the two culverts.

The contractors have shifted the alignment of street and traffic lanes at the culvert near Taylor Street. This is to create space on the north side to start the excavation, as you can see in difference between image 1 and 2. Please take care if you are driving along Wolverton Street because the lanes will

- altered at different stages of the project.
- The project team are satisfied with the traffic management plan for Wolverton Street. Traffic monitoring shows that there are only minor delays during peak travel periods. The traffic data is being continually observed to ensure any delays are minimised.
- For further information about the project, you can check out [AT.govt.nz/projects-roadworks/wolverton-culverts-upgrade](https://at.govt.nz/projects-roadworks/wolverton-culverts-upgrade).
- This page has a video that explains why this project is important and how it will address stormwater issues in the future.



## BUY LOCAL SUPPORT LOCAL

FEATURING BUSINESSES IN NEW LYNN



Xian bridal offers a huge selection of wedding and ball gowns ready for you, as well as first communion and flower girl dresses, veils and accessories.

Wedding gown prices range from \$260-\$2280 and bridesmaids dresses from only \$60, so we have something to suit all tastes and budgets.



Shop 5, New Lynn Plaza,  
3115 Great North Road  
(behind The Warehouse).

Open Tuesday to Saturday  
10am to 4pm

Phone 09 827 1286  
for a free consultation.



**Now we are at Level 1 under the COVID-19 alert system most New Lynn businesses have resumed trading and, with some restrictions, we are supporting things getting back to normal where possible but understanding of the situation we all face.**


There is a directory on our website with contact details for NLBA members

who are open for business. Please remember that some will be trading under difficult conditions and be patient if circumstances have meant some changes in the way they conduct business.


We strongly recommend you seek support if your business is experiencing difficulties. There are a number of useful links with advice and

support on the NLBA website. Please do apply for any funding you are entitled to if you need assistance. The executive committee understand this has been and continues to be a very trying time for many in our business community and are here to help in any way we can.

If you have any questions, please do not hesitate to contact our team.




**SENSATIONAL SERVICES**  
Professional Cleaning Services



**GET YOUR CAR CLEANED WHILE YOU SHOP!**

Leave your car with the team at LynnMall in the Totara Ave car park under the cinema and come back to a sparkling clean car! We have great deals at the moment starting from \$35 and are open 7 days a week.

Cnr Totara Ave and Veronica St Lynnall  
0800 870 870  
www.sensationalservices.co.nz



Theia is an experiential brand management agency operating from the last nine years providing you with ground breaking sustainable business solutions to support your business needs. Theia provides you with a launchpad to become a strong market leader, support and uplift the businesses towards a better tomorrow. We have added loads of new and exciting services under our umbrella. We are here to help you produce great results for your business. Our services are not only affordable but measurable. Apart from Website design and development, Graphic designing, digital film and photography, VI and branding solutions now we also do:

- SEO and data Analytics
- Social media promotion
- Content Management
- e-bay and amazon optimisation
- Virtual Reality Simulation
- 3D modelling

www.theia.co.nz  
info@theia.co.nz 09 222 2288  
2/25 Veronica Street, New Lynn



**TRUST INSURANCE**



**Break free with many pre-existing conditions covered after 3 years**

Don't feel locked into your current health insurer because you have a pre-existing condition. For a limited time you can sign up to a comprehensive NIB policy that includes cover for many pre-existing conditions after 3 years.\*

**CALL US TODAY FOR MORE INFORMATION**  
\*Terms and conditions apply

**PLUS THE CHANCE TO WIN A GREAT MYSTERY WEEKEND**

New clients will also be in to WIN one of **10 NZ Mystery Weekends**, consisting of flights for two people, two nights' accommodation, plus a unique experience!

Call now on  
027 558 2213 or 0800 88 78 78  
www.trustinsurance.co.nz

## NLBA Executive Committee



**Sitendra Singh**  
McDonalds  
CHAIRPERSON  
021 757 288



**Beryl Juretech**  
Covers Hire  
DEPUTY CHAIRPERSON



**Dale Mays**  
New Lynn RSA  
TREASURER  
827 3411



**Nicola Donald**  
The Wardroom  
COMMITTEE MEMBER  
827 6528



**Alex Watson**  
Lexon Financial Planning  
COMMITTEE MEMBER  
827 1060



**Frances Liang**  
ANZ Bank  
COMMITTEE MEMBER



**Karel Wöhlrick**  
Theia Creative Studio  
COMMITTEE MEMBER



**Amelda Tasila**  
CONTRACT MANAGER  
021 264 3188



**Tracy Mulholland**  
CONTRACTOR  
021 287 2296



Office: 37 Totara Avenue, New Lynn, Auckland  
Phone: 021 264 3188  
PO Box 15456, New Lynn, Auckland 0640  
Email: newlynnbid@gmail.com  
www.newlynnbusinessassociation.net.nz  
facebook.com/newlynnbusinessassociation

NEW LYNN  
MEANS BUSINESS



**WOULD YOU LIKE TO SHARE SOMETHING IN OUR NEWSLETTER?**

If you would like to have an advert in the newsletter or share some information please send your submission to the NLBA Newsletter team via [newlynnbid@gmail.com](mailto:newlynnbid@gmail.com)