



Committee Update

Hello community,

Today as we share news with you, we are at a time of change for the good. The announcements by government to change mandates and other previously required restrictions has now passed, and whilst we remain mindful of the many challenges and potential future risks, we welcome people back into our business district.

One of the aspects of this pandemic that has been of concern, is that of the emotional harm done to our community, our business people have suffered financially but added to that is the impact on peoples lives. We are mindful of this and we as an organisation do care about our membership. Remember, if you are a member or associate of the NLBA, we have a Wellbeing program

where we offer three free confidential counselling sessions. Please do contact us for more information or look up our website if you would like go direct to our support team.

Change is again upon us, come on back to the town centre, support local and take care

Vish Bhati – Chairperson and committee of the NLBA

BACK TO BUSINESS IN NEW LYNN

We are locals, supporting and serving our local community.

Here are some of our fantastic local businesses.



One of our favourite go to foodies in New Lynn, Pien and the team offer the best of customer service, their food is divine and the friendliness is outstanding. If you haven't yet had the chance to visit for a snack, lunch or an afternoon tea, we highly recommend a visit to the store.

Our management team at the NLBA give them a 10/10.



Hours **Monday to Saturday 7:30am - 2:30pm**

43 Totara Ave, New Lynn, Auckland

Phone **027 453 0669** | Email **info@wisefoxford.co.nz**

wisefoxford.co.nz



Mr Zhou's dumplings is a favourite of many locals and Aucklanders. Located on Great North Road in the New Lynn town centre, the restaurant is well recognised and known for their delicious dumplings, noodles, soups and other Asian/Chinese cuisine. It's been a favourite go to for many of us with their takeaway service a huge benefit to those of us who like enjoy an authentic meal. Check it out and try some dumplings with a scrumptious pancake, perhaps boiled or fried, anyway is fine by us.



Hours **Monday 5:00pm - 10:00pm**

Tuesday to Sunday 11:30am - 10:00pm

3130 Great North Road, New Lynn, Auckland

Phone **09 827 8800** | **mrzhoustdumplings.co.nz**

OUR PEOPLE



WHITE ROSE OSTEOPATHY

Our dynamic team offer hands-on personalized treatment and plans, for both recovery and function by way of osteopathy, acupuncture and herbal medicines, one on one yoga sessions and massage. The team at White Rose Osteopathy are highly skilled qualified practitioners who offer something special to our services.

13 Totara Ave, New Lynn, Auckland

Phone 09 222 0345 | Email clinic@whiterose.nz

www.whiterose.nz



ASSOCIATE MEMBERS

Please support our local business people and our associate members, these are some of our great associate businesses, thanks for being part of the NLBA.



A PERSONAL TOUCH IN A HECTIC WORLD

A friendly professional salon, created as a place to be nurtured and nourished whilst unwinding and relaxing in a caring environment. Therapist Catherine trained as a beauty therapist after many years in the corporate world. Over the years she came to appreciate the value of time taken to nurture and nourish yourself. She has a passion for holistic health and strives to provide treatments which help you to relax and feel good about yourself.

5 Hinau Street, New Lynn, Auckland

Phone 027 491 8919

Email nurturebeauty@me.com

www.nurturebeauty.co.nz



A Sonepar Company

Corys Electrical is an industry leader that employs exceptional people who share a passion to deliver the best products and services across the residential, commercial and industrial sectors. We provide quality products, backed by expert advice, technical and logistical support, and e-commerce solutions. Corys Electrical is part of the Sonepar Group, an independent family-owned company with global market leadership in B-to-B distribution of electrical products, solutions and related services.

41 Portage Road, New Lynn, Auckland

Phone 09 827 2143

Email newlynn@corys.co.nz

corys.co.nz



SENSATIONAL SERVICES
Professional Cleaning Services



GET YOUR CAR CLEANED WHILE YOU SHOP!

Leave your car with the team at LynnMall in the Totara Ave car park under the cinema and come back to a sparkling clean car!

Open 7 days a week.

Cnr Totara Ave and Veronica St LynnMall

Phone 0800 870 870

www.sensationalservices.co.nz



DANZA was established in 2018 and has quickly become one of NZ's leading dance studios. Our purpose built studio facilities have wooden sprung floors, heat pumps and wall to wall mirrors that are suitable for all genres of dance. Along with our students and their families, we have built an incredible community that allows dancers of all ages and abilities to feel encouraged and reach their full potential. DANZA is a family friendly studio offering classes for all ages and skills.

72 Delta Ave, New Lynn, Auckland

Phone 027 491 8919

Email info@danza.co.nz

www.danza.co.nz



Love is the most important ingredient when it comes to food and for us, it's no different.

Kohu Road has been handmaking ice cream and sorbet for over a decade and with only a small team, we have been dedicated to producing excellent products using authentic, natural ingredients. Our pursuit of decadent luxury is relentless and we will always provide our customers with the artisan experience in each spoonful of ice cream we make.

44K Portage Road, New Lynn, Auckland

Phone 09 827 9990

kohuroad.co.nz



The Beacon Community Newspaper, your local go to newspaper, supported by locals for locals.

The Beacon relies solely on the support of advertisers to publish each edition.

If you would like to advertise with us give us a call, or contact Kerrie on 027 290 4444 or kerrie@bhb.nz

www.bhb.nz

NLBA member survey

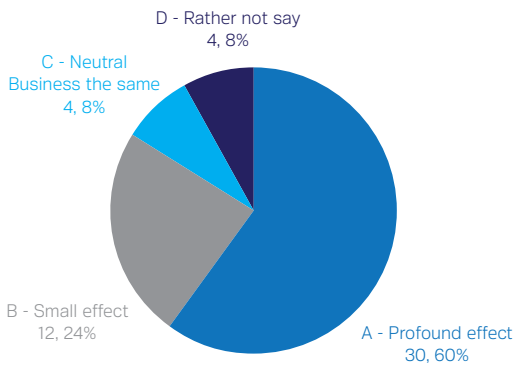
In the past four weeks, the NLBA have undertaken a local member survey on the impacts of Covid-19 and Omicron on business. As part of this work we asked members for their views, opinions and comments on plans for the upcoming year, opinion on promotions and types of marketing/promotional activity. We will present the full findings to the membership once the committee have approved this and checked the summary report. We hope to have the report available to our wider membership within two weeks (April 2022). In the meantime we are pleased to provide you with some of the findings, for more information please contact the manager Amelda Jeffery.

What type of activities/promotion of New Lynn town centre do you think should occur in the next 12 months? (These are a sample of the responses):

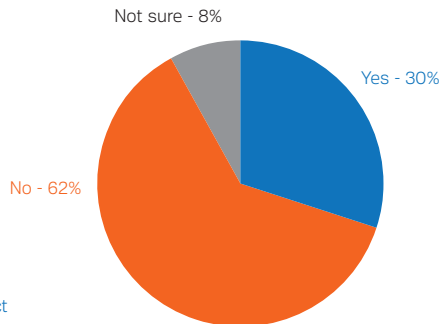
- A business advice program
- Continue plans in place for 2022-2023
- Designed to stimulate growth for businesses and between businesses
- No real perspective on this, security could be advantageous
- A Santa grotto in an empty building
- Grab-A-Deal and similar promotions
- Big plans, continue Halloween and Christmas
- Money to go to capital projects
- Networking
- Social media presence
- Maybe a market day for a week
- Promotions and activities to entice people to spend (enter to win or discount vouchers are always good)

- Christmas event
- Support via hospitality
- Encourage people into restaurants
- General entertainment
- Shopping passport
- Don't take on too much
- ANZAC parade
- Keep adapting, changing and listening to members
- If you do the same thing you will get the same results, sometimes change is good
- Buy vouchers from businesses and use as random giveaways
- Could have something with music not an event but with music
- Kids colouring competition
- Business Awards
- Showcase member stories, put a face to a business for people to see

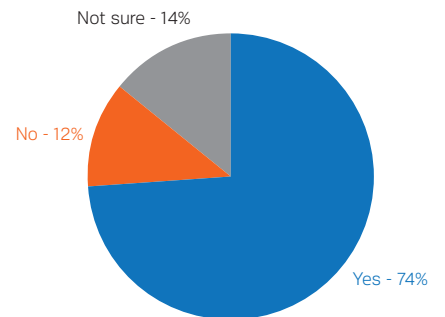
How has Covid-19 Omicron affected your business?



The NLBA have a wellbeing support programme in place. Would you use this service?



Should NLBA hold networking events in the next 6 months?



What's happening in March, April and May

Shop Local

A social media campaign – Video New Lynn: We will be working with our business community to bring stories and news about local businesses, look out for the offer to join this shop local campaign.

Grab-A-Deal

Plans are underway to get your input and participation in the popular GAD campaign, we look forward to this years campaign. Contact Amelda for more details.

CCTV planning

We continue to work with the business community to implement a CCTV program.

Strategic planning

Strategic planning is an important part of the work we do. Following the Feb/March member survey we will be working on updating our plans. Thanks to all members who have participated and supported us by providing feedback.



STRATEGIC PLAN 2020-2022



Whau Ward Councillor update



Parking Strategy

On the 31st March 2022 at the Auckland Council Planning Committee meeting a vote took place regarding the Auckland Transport DRAFT Parking Strategy. The result was 13-10 endorsement of the strategy going to consultation. I voted against this and as the vote was lost and the DRAFT Parking Strategy will now go out for consultation. I understand there is a lot of community engagement and feedback that has already occurred and I would like to hear your views so please have your say on the DRAFT document.

Annual Budget for Auckland Council

The draft annual budget consultation period is now closed, your input is valuable when making these decisions. The decision will be made in late June with the budget decision being implemented in July. For more information you can visit <https://www.aucklandcouncil.govt.nz/plans-projects-policies-reports-bylaws/our-plans-strategies/budget-plans/annual-budget-22-23/Pages/default.aspx>

Business Improvement Districts

Thank you to all the members of the business associations who support connectivity in our community across the Whau. We have four great business associations in the area, they comprise of Blockhouse Bay, Avondale, Rosebank and New Lynn. I would like to acknowledge that Mike Gibson who was the manager of the RBA for many years has recently retired, thank you to Mike for all of your work and your dedication to supporting our local business community.

BID Policy: Recently the Auckland Council staff went out with a change in policy, this was met with a lot of feedback and now, an updated version including views and opinions of those paying this Targeted Rate. Consultation is very important, especially as it is a Targeted Rate so thank you to all who input to the process.

If you would like to contact me or have any local matters regarding council that you would like to share, please feel free to contact to myself or for Whau local board matters, the elected representative is Chair Kay Thomas.

Networking Events

We will be hosting a networking event for our members, it's free, come along and be part of our team that supports local and each other. See details on this page.



Networking event

Date - Tuesday 26th April

Time - 5.45pm - 7.00pm

Venue - New Lynn RSA, 2 Veronica Street, New Lynn

Guest Speaker - Sir Bob Harvey

Topic - Surviving Tough Times

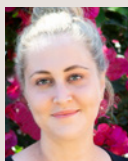
RSVP - Amelda 021 264 3188 or email amelda@nlba.co.nz



NLBA Executive Committee



Vish Bhati
Barfoot & Thompson
CHAIRPERSON
022 600 2600



Nicola Donald
The Wardroom
DEPUTY CHAIRPERSON
09 827 6528



Norah Ding
Little Treats Café
TREASURER
09 222 1166



Scott Clement
Beds R Us New Lynn
COMMITTEE MEMBER
09 218 9644



Beryl Juretic
Covers Hire
COMMITTEE MEMBER 09
826 0004



Dale Mays
New Lynn RSA
COMMITTEE MEMBER
09 827 3411



Vikatolia Misa
McDonalds New Lynn
COMMITTEE MEMBER
09 827 3879



Amelda Jeffery
CONTRACT MANAGER
021 264 3188



Office: 25 Veronica St, New Lynn, Auckland (above Little Treats Cafe)
Phone: 021 264 3188
PO Box 15456, New Lynn, Auckland 0640
Email: amelda@nlba.co.nz
www.newlynnbusinessassociation.net.nz
facebook.com/newlynnbusinessassociation

NEW LYNN
MEANS BUSINESS



WOULD YOU LIKE TO SHARE SOMETHING IN OUR NEWSLETTER?

If you would like to have an advert in the newsletter or share some information please send your submission to the NLBA Newsletter team via amelda@nlba.co.nz