



Katherine Mansfield House & Garden Exhibition Room Information



One of the original bedrooms upstairs at Katherine Mansfield House & Garden operates as our Exhibition Room. We welcome proposals for exhibitions to be hosted in the space. The following information is to help you decide if our Exhibition Room is a good fit for your exhibition and the details a proposal needs to include.

Katherine Mansfield House & Garden

Katherine Mansfield House & Garden is a writer's museum and Category 1 Historic Place in the inner-city heritage suburb of Thorndon, Wellington. Opened to the public in 1988 following restoration, Katherine Mansfield House & Garden offers a unique insight into 19th-century Wellington and the life and literature of its most famous former occupant.

The house is owned and operated by the Katherine Mansfield Birthplace Society, a registered charity. Staffed by a small, dedicated team with assistance from volunteers, Katherine Mansfield House & Garden runs regular events and activities. We also offer guided tours for small and large groups and welcome school groups for education visits that take an active learning approach.

The Exhibition Room

We welcome exhibition proposals that meet one or more of the aims of the Exhibition Room:

1. To be a dynamic space that encourages return visitors
2. To celebrate creativity
3. To delve deeper into aspects of Mansfield's life and writing
4. To highlight items in our collection

Exhibitions should be suitable for a general audience, including children as part of school groups. Proposals are considered by the Director of Katherine Mansfield House & Garden and the Board of Katherine Mansfield House & Garden have the final decision.

Entry to the house is by admission fee: \$10 full price, \$8 concession (including Gold Card and Community Services cardholders and tertiary students, and no charge for under 18s (unless part of pre-booked school group for an education session, which is \$5 per student).

Exhibition duration is flexible but ideally at least 6 weeks, with a preference for 12 weeks.

The measurements for the Exhibition Room and further photos can be found at Appendix 1. The room is papered in custom-made wallpaper in a replica design of the original wallpaper, so nothing can be directly attached to the walls. The room has an Artiteq top rail hanging system that enables anything compatible with its hooks to be hung, up to a weight of 15kg per hook. The room has one central pendant light with a low-wattage bulb that is on during opening hours, and track lighting that is triggered by a sensor when a visitor enters the room and stays on for 10 minutes each time. The position and direction of the track lighting fixtures can be adjusted.

If your exhibition requires a professional installer, we can provide the details of preferred installers and may be able to negotiate on sharing the cost. Transport of exhibition items and any associated costs are the responsibility of the exhibitor.

We do not have display plinths or cases but may be able to assist with borrowing these depending on the number and style required.

Katherine Mansfield House & Garden has insurance for loaned artwork and curios up to \$25,000 per item. Unfortunately, at this point the Exhibition Room does not have climate control. The house is supervised during opening hours by staff and volunteers. There are security cameras in the house and an alarm system.

If the exhibited items are being sold, Katherine Mansfield House & Garden will manage the sales and take a 20% commission. If items are sold to buyers unable to collect from the house directly on the exhibition has ended, the exhibitor is responsible for packaging items for shipping and the cost of shipping is to be covered by the buyer.

Exhibitions usually have a small opening event with a maximum of 30 guests, as per capacity requirements for the house. Costs for the refreshments can be negotiated if guests of Katherine Mansfield House & Garden such as the Board, volunteers, and funders, are able to be invited.

Katherine Mansfield House & Garden will promote the exhibition through its website, monthly email newsletter, social media and any other suitable opportunities as they arise.

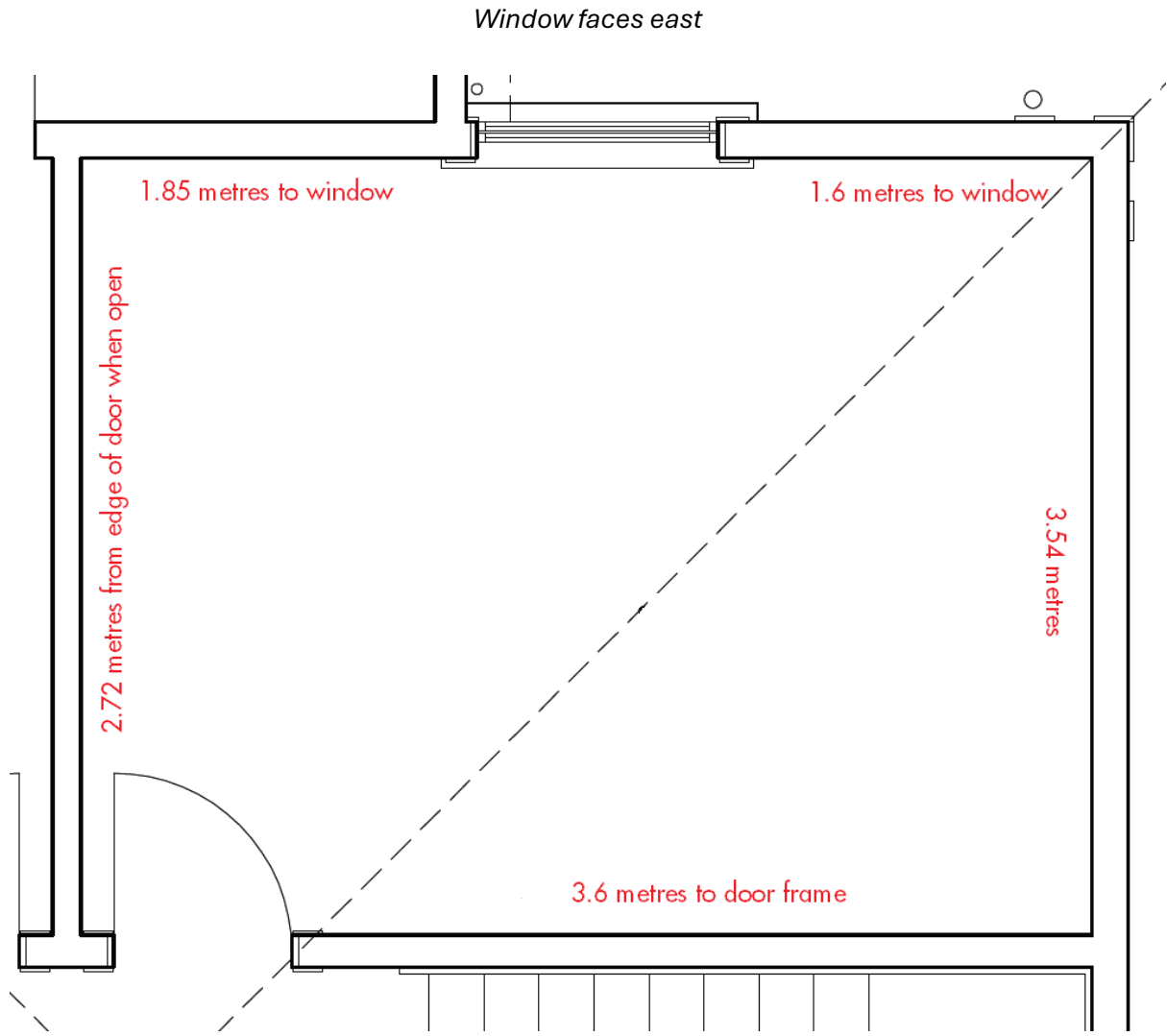
To Propose an Exhibition

Please provide the following details via the form on our website:

- Exhibition description - including title (if you have one), exhibition concept and main themes of the exhibition
- A draft object list
- People involved – including brief curator biography
- Preferred exhibition dates and whether these are flexible
- How the exhibition will be displayed (e.g. hung works only, a mix of hung works and items displayed on plinths/in display cases)
- Why you think this exhibition is a good fit for Katherine Mansfield House & Garden

If you have questions about the Exhibition Room or making a proposal, please don't hesitate to get in touch by emailing director@katherinemansfield.com.

Appendix One: Measurements and Photos of the Exhibition Room at Katherine Mansfield House & Garden





Looking towards the south wall



Looking towards the door in the north-west corner