

**Beading tool for Standing Seam Panels and sheets**  
**Panel-Beader PB 250 Plus**

**Mobile Beading Tool for sheets and panels. Standing Seam Panels up to 38 mm and many other work pieces. On site or in the workshop.**

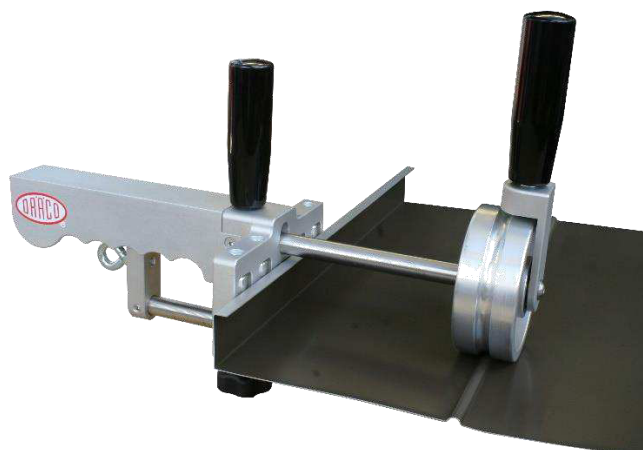
The Panel Beader PB 200 Plus is a light, portable device with a manual drive. Ideal for beading sheet metal, coulters and folded or pre-profiled material. The manual feed of the top roller enables sensitive processing of the workpieces and the processing of complex shapes. The workpiece is not only guided through a stop plate, but also through vertically arranged hard guide rollers and ball bearings, which ensure the repeatability of recurring workpieces.

- Interchangeable form rollers
- Beading or offset depth up to approx. 3.5 mm
- Ideal for stiffening standing seam panels

**Capacity, ca:**

Aluminium, Copper, Zinc:	<b>1,0 mm (18 ga.)</b>
Steel	<b>0,8 mm (20 ga.)</b>
Stainless steel	<b>0,5 mm (23 ga.)</b>

**Special roller pairs on request**



91900



Art.nr.:	Type	kg
91900	Panel Beader PB 250 Plus FLAT	ca. 3,2
91901	Panel Beader PB 250 Plus ROUND	ca. 3,2



91901