

IT'S TIME FOR
Stressless[®]





It's about time.

Time is a precious commodity. Our days are busily packed with the essential tasks that life invariably brings. It seems no matter how hard we try, there is never quite enough to time balance work, life and play. Modern living is busy – we are 'switched-on' for more hours than ever before and the day-to-day pressures can leave us feeling exhausted. Relaxation is essential for our overall well-being but if we don't plan for it, it's all too easy to miss it out. We need down time. Time for ourselves. Time to listen to our bodies. To rest and re-energise from the day. It's time to make time for you.

It's time for
Stressless®

It's time to take a break.

It's important to create a sanctuary in your home, a place where you can forget about all the must-do's and just calm down. Stressless® furniture is designed with this in mind. That's why we make the most comfortable chairs, sofas and dining chairs in the world. Designed to listen to your body, they help you relax and unwind. All that is required of you is to find space for it. In life, and at home.

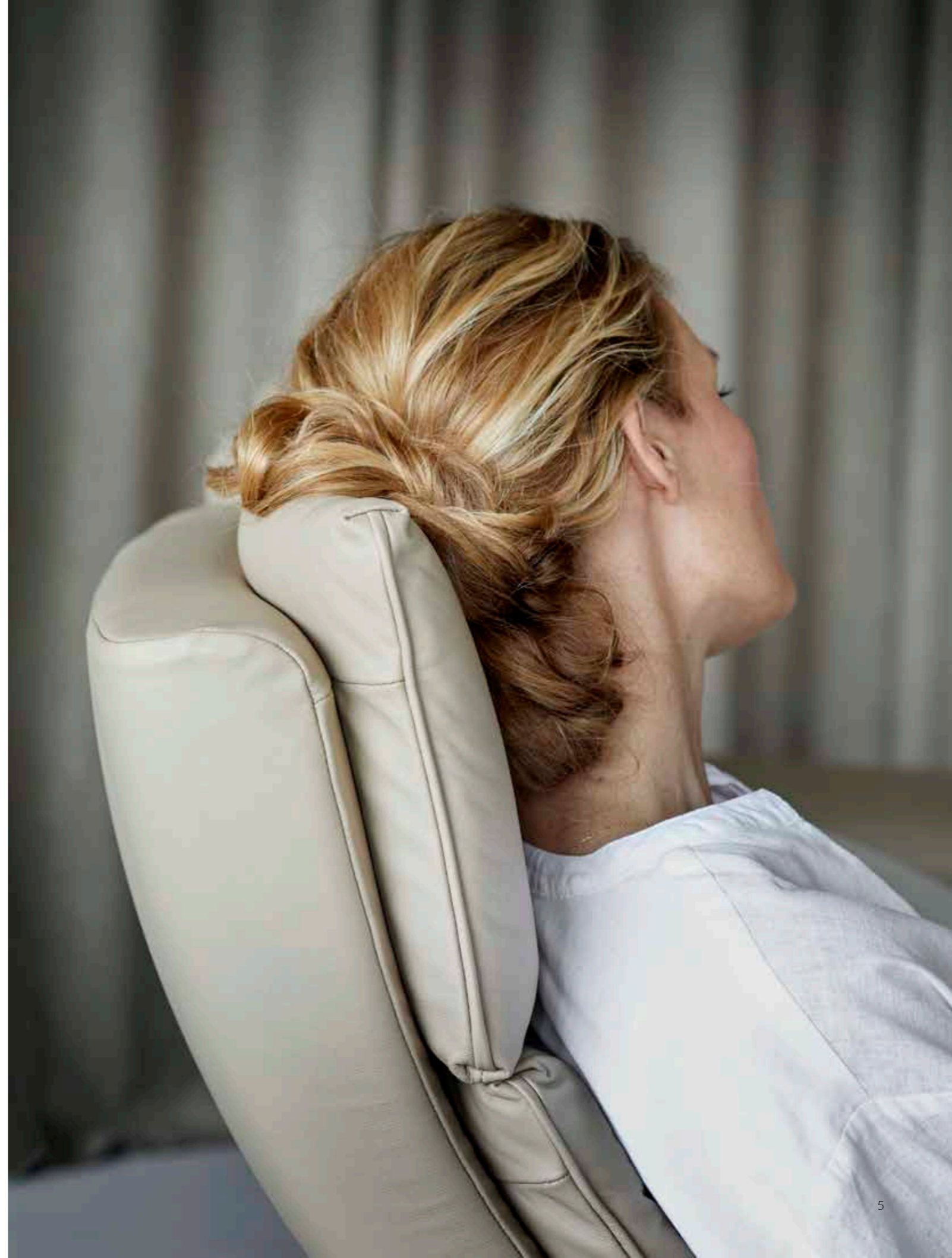




Photo: Roman Jøe

It's time to care.

Our pledge to the environment through furniture that spans generations.

When you purchase Stressless®, you choose quality furniture that will serve you through a lifetime. Raw materials are selected with care and consideration of the beautiful environment that surrounds us. Sustainable manufacturing processes at our factories have always been at the heart of Stressless® production culture and are enhanced through our use of the highest quality raw materials plus bioenergy to heat our facilities.

We continuously thrive to improve the efficiency – any measure that enhances quality and reduces energy, time and wastage, is a step closer to creating superior furniture that endures.



Norwegian quality since 1934.

Far west in our elongated country, you find a beautiful place surrounded by deep fjords and majestic mountains. These are the surroundings where we find the inspiration for our unique designs. In this village, the craftsmanship and passion for furniture has been passed through generations –all the way back to 1934.

Under the surface of supple leather and cozy fabric lies true engineering genius. From multifaceted sets of springs to foam that contours to your body, every aspect contained within Stressless® furniture is deliberately engineered, designed and assembled to bring you an outstanding seating experience. Understanding the science of comfort and movement has always fuelled our innovative spirit and desire to design the most comfortable, unique furniture in the world.

That's why we call ourselves **The Innovators of Comfort™**



Engineer: Henrik Birkelund

Human touch through time.

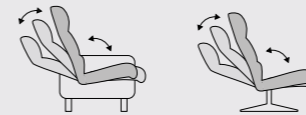
Our history in challenging the conventional way of making furniture goes all the way back to 1934. With a highly skilled team of designers, engineers and furniture makers, we create a fusion of expertise. Through collaboration a design can surpass expectations. This heritage, combined with innovative production methods, ensures our extraordinary level of quality.

The core of our quality lies within the combination of a highly skilled workforce and use of state-of-the-art robot technology. The strength of robots lies within the precise functions they perform - the same way and every time, usually taking on repetitive operations. But human craft is still absolutely necessary for the delicate details and solutions tailored just for you.



The Innovators of Comfort™.

With the best quality materials, environmentally friendly processes and an uncompromising focus on comfort, our machines and people work together to create furniture that will live with you through a lifetime. When you sit down and appreciate how genuine Stressless® furniture feels, you will know.



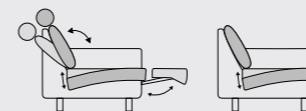
PLUS™ SYSTEM. Whether you are sitting or lying down, our unique Plus™ system provides optimal comfort and support for the lower back and head, in all positions. The lumbar support automatically adjusts as you recline. You can also choose between an active or rest position for the neck.



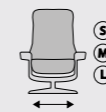
POWER LEG™ AND POWER This integrated footrest is a great alternative to a free-standing ottoman. With a slim design – elegantly concealed beneath the seat, it can easily provide superlative support for your legs by extending it outwards.



FIND YOUR BALANCE with **BalanceAdapt™**. Subtle rocking motions enhance the feeling of total balance. These movements usually make all the difference between a good seat and a fantastic one.



COMFORT IN ALL POSITIONS. When sitting down, **ErgoAdapt™** provides a soft landing and total comfort with a seat that automatically adjusts to your position and smallest movements. When lying down, the sofa turns completely flat for best possible rest. A power seat with the integrated footrest includes a reclining function system that provides optimal comfort and support for your body in all positions.



RIGHT SIZE MATTERS. Optimal comfort is also about correct size. Most of our recliners therefore come in multiple sizes for you to find the perfect fit.



YOUR DESIGN. Optimal comfort is also about unique design options. Our Star base models come in 3 different options, - Low, Adjustable and High back.



DINE IN COMFORT. Our dining chairs have a flexible seat and back, offering a variety of positions for increased comfort. This comfort enables you to maximize your quality time with friends and family.

New

Stressless® Scott
Paloma New Cognac
Sirius base
brushed aluminium



RECLINERS

It's time to relax.

When we relax, our heart rate slows. Tensions release and our blood pressure reduces. Relaxing also increases blood flow in the body, helping us to feel restored and energized. Making time to escape the stresses and strains of everyday life... to restore body and mind is key to improving our overall well-being. Our experience in furniture making has taught us that comfort is highly personal. We have been perfecting comfort since 1934 and our recliners actively encourage you to sit down and relax in the most comfortable way possible. That's the difference between a good chair and a fantastic chair.



RECLINERS PLUS™ SYSTEM. Whether you are sitting or lying down, our unique Plus™ system provides optimal comfort and support for the lower back and head, in all positions. The lumbar support automatically adjusts as you recline. You can also choose between an active or rest position for the neck.



Stressless® Scott
Paloma New Cognac
Sirius base in brushed aluminium

Introducing our latest innovative designs.

At Stressless®, we are constantly innovating and pushing the boundaries of design to bring you the ultimate comfort experience at home.

In 2020, we are proud to introduce two new recliners, Stressless® Sam and Stressless® Scott... chairs of the future. These next-generation products inherit all the well-known and much-loved Stressless® features but come with superior technical mechanisms and motorized functionality. Easily operated by remote control, the motorized functions offer truly outstanding comfort in all positions, because small adjustments can make a big difference. Take comfort to the next level with optional extras including built-in heating and massage functions.



Stressless® Sam Wood
Paloma Almond
Disc base in Walnut Veneer

New



Plus™ system with individual adjustment of the head support.



Armrests follow the movement of the backrest, assuring a comfortable angle for your arms in all positions.



A sleek and intuitive remote control, conveniently attached by a magnet at the armrest.



Integrated legrest with full support.

Features of Stressless® Sam & Stressless® Scott.

The new ergonomically designed Stressless® Sam and Stressless® Scott recliner chairs have an in-built motor and a wealth of functional features for extreme comfort and support, in all positions. These generous, one-sized recliners have full 360° swivel, a fully integrated leg rest and are available in different design options.

Motorized for choreographed movement

Both chairs come with three in-built motors, all individually operated by a slim and stylish remote control that attaches to the chair armrest by magnet. Adjust the controls to easily and effortlessly synchronize movements to support you back, legs and head. Simply hit the HOME button to move back to an upright position. Chairs without heating and massage functions are available with battery if you prefer to avoid cords.

Designed for comfort

The ergonomically designed curved seat and back frame, incorporating Flexo springs, is shaped for support whilst layers of quality foam and fibres provide extra comfort. Experience the feeling of zero gravity in the reclining angle as the chair distributes your body weight evenly, reducing the strain on your muscles and bones, and avoids a gap in the lumbar region.



Standard remote control

- Individual adjustment of head, back and legrest.
- Synchronized movement of neck with Plus™ system when operating the back.
- The HOME button takes you back to an upright position.

The fully integrated leg rest offers comfort for all leg lengths and the armrest height is perfect for reading or using your laptop.

Plus™ system

Whether you are sitting or lying down, our unique Plus™ system provides optimal comfort and support for the lower back and head in all positions. The lumbar support automatically adjusts as you recline, filling in the gaps so you can sink deeper into the chair.

Full 360° swivel with personal design options

Experience the feeling of freedom with our 360° Sirius aluminum cross swivel mechanism, available in brushed or matte black finish. The laminated round Disc base comes in Black, Natural or Whitewash oak Veneer and Walnut Veneer.

Extra comfort

Add heating only, or heating combined with a light massage for intense relaxation.

Stressless® Sam and Stressless® Scott come with a 10-year warranty on the internal mechanism, a 5-year warranty on electrical parts, motor, heating and massage and a 2-year warranty on the battery.



Remote control with heating and massage

3 versions:

- Remote control for movement of 3 motors.
- Heating, 4 levels.
- Heating, 4 levels. Massage, 2 levels.



Lean back with Stressless® Scott.

Graceful and slender, Stressless® Scott will effortlessly complement any interior setting. With a soft silhouette and double stitching detail at the seams, this stylish recliner has a sophisticated design. The integrated pillow in the headrest makes it easy to adjust head and neck support at your preference whilst the ergonomically shaped seat and back frame ensures total luxury whilst sitting. Add personal touches with your choice of base, quality upholstery and colours.



PLUS™ SYSTEM. Whether you are sitting or lying down, our unique Plus™ system provides optimal comfort and support for the lower back and head in all positions. The lumbar support automatically adjusts as you recline. You can also choose between an active or rest position for the neck.

Stressless® Scott
Paloma New Cognac
Sirius base brushed
aluminium

New





It's time to enjoy Stressless® Sam.

With a generous open design, round soft form and pared back cushions, Stressless® Sam comprises all the hallmarks of iconic mid-century modern style. An elegant and contemporary outline paired with detailed French stitching at the seams completes the look. A curved back and seat provide a comfortable and hugging feeling whilst sitting and the accentuated shape of the adjustable headrest cushion offers perfect support for the head and neck.

Stressless® Sam Wood is a version of the same chair with wooden panels on the armrests for a totally natural Scandinavian look and feel. Choose between four different wood colours to complement your interior style.

Personalize Stressless® Sam and Stressless® Sam Wood with your choice of swivel base and high-quality leather or fabric...both available in a wide range of traditional and modern colours.



PLUS™ SYSTEM. Whether you are sitting or lying down, our unique Plus™ system provides optimal comfort and support for the lower back and head in all positions. The lumbar support automatically adjusts as you recline. You can also choose between an active or rest position for the neck.

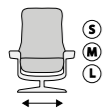
Stressless® Sam
Paloma Maroon
Sirius base matte black

New



Design your dream chair.

Style and comfort are individual. It's only natural, since we all come in different shapes and sizes. Four different bases are available for our recliners: Classic, Signature, Star and Office Base. For soft rocking motions, the Signature and Star Base are ideal. Optimal comfort is also about finding the right size of chair. Most Classic and Signature chairs come in three different sizes, and all the well-known Stressless® benefits are of course included.



RIGHT SIZE MATTERS. Optimal comfort is also about correct size. Most of our recliners therefore come in multiple sizes for you to find the perfect fit.



Stressless® Reno (M) Signature
Lina Beige/Oak

Stressless® Mayfair (M) Classic with footstool
Paloma Light Grey/Whitewash

Stressless® View (M) Signature with footstool
Paloma Sand/Oak



It's time to put your feet up.

Stressless® with Power™

Millions of people across the globe benefit everyday from our incredibly comfortable chairs. And now, we are delighted to offer our iconic recliners with new motorized patented systems. In perfect harmony with modern Scandinavian design, Stressless® with Power™ recliners offer enhanced motorized functionality whilst staying true to classic Stressless® design.

Stressless® with Power is a great alternative to a recliner and separate footstool, and is available in two systems:

Power Leg™ – the integrated footrest has a slim design, elegantly concealed beneath the seat. Provide support for your legs and extend the footrest outwards by lightly pushing a button under the armrest. The footrest is designed to follow the natural angle of your feet and can be adapted to different leg lengths, extending longer than most other footrests on the market. It is easy to get off the chair, even when the footrest is extended. The back of the recliner is operated automatically when you lean backwards.

Power™ – this system comes with all the benefits of Power Leg™ plus the motorized reclining function of the backrest for ultimate ease and comfort. Use the set of buttons found under the armrest next to the footrest buttons.

Battery option is also available with a magnetic charger attachment for easy access. Total comfort at the touch of a button.



Stressless® Reno (M) Classic Power™
 Paloma New Cognac/Grey
Stressless® Swing Table



Stressless® Mayfair (M) Classic Power™
 Paloma Almond/Oak



Stressless® Sunrise (M) Classic Power™
 Paloma Maroon/Black
Stressless® Computer table



Stressless® Wing (M) Classic Power™
 Paloma Chestnut/Walnut



POWER™ AND POWER LEG™ This integrated footrest is a great alternative to a free-standing ottoman. With a slim design - elegantly concealed beneath the seat, it can easily provide superlative support for your legs by extending it outwards.

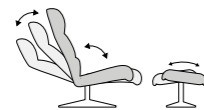


Stressless® View (M) Classic Power™
 Calido Dark Grey/Wenge

The individual footstool.

Stressless® free-standing footstools will always be classic pieces of furniture and the perfect partner for our chairs and sofas. Since all Stressless® furniture is designed, engineered and handcrafted to exemplary mechanical precision, why would we make a stool that is any less advanced?

When you lean back in a recliner chair, your legs move forwards and down. Most traditional, flat footstools do not support this sitting position. Free-standing Stressless® footstools have a built-in sliding function that automatically follows the movement of your legs, giving you the freedom to move whilst staying completely supported and making the world's most comfortable recliner even better. What's more, in a locked position our footstools can be used as an extra seat.



PLUS™ SYSTEM. Whether you are sitting or lying down, our unique Plus™ system provides optimal comfort and support for the lower back and head in all positions. The lumbar support automatically adjusts as you recline. You can also choose between an active or rest position for the neck.



Stressless® View (M) Classic
Paloma Fog/Whitewash



Stressless® Consul (M) Classic
Batick Cream/Oak



Stressless® Mayfair (M) Classic
Paloma Almond/Oak

Stressless® View (M) Signature
Pioneer Black/Black



Stressless® Magic (L) Signature
Pioneer Black/Black



Stressless® Reno (M) Signature
Calidio Light Grey/Black

Stressless® Signature bases.

Stressless® Signature Bases are unique. Incorporating our patented BalanceAdapt™ functionality for a feeling of complete comfort that you will not find with any other base. The innovative mechanism provides a gentle rocking motion, creating a feeling of weightlessness, and the ability to lie almost horizontally. Its stylish Scandinavian design, with a seamless blend of aluminium and wood adds a contemporary edge to the leather and fabric recliner range.

MORE CHOICE, MORE COMFORT

Stressless® Signature Base is available on all small, medium and large luxury leather and fabric recliners (excluding Star Base models). Choose between eight wood colours in combination with aluminium or matt black on the metal parts.



FIND YOUR BALANCE with BalanceAdapt™. Subtle rocking motions enhance the feeling of total balance. These movements usually make all the difference between a good seat and a fantastic one.



Stressless® View Office
Pioneer Black/Black



Stressless® London Office with adjustable headrest
Paloma Henna/Chrome

Home office comforts.

Whether it's a dedicated room, a small study space or a nook in the dining room, it's important to be comfortable when working at home. If you spend a lot of time seated working at a screen, then a well-designed chair that actively encourages a good posture is a necessity.

Our collection of home office chairs marries supreme comfort and style, blending effortlessly with the rest of your interior. Soft cushioning and sublime lower-back support mean you can sit for longer periods of time in complete comfort.

All our recliners can be used as office chairs. Stressless® Star Base models come in polished aluminum bases with low, adjustable or high back options. Stressless® Classic and Signature recliners come in a black base with wood details in a large range of colours.

Stressless® Paris with adjustable headrest and footstool
Paloma Copper/Chrome

Stressless® Paris Low back
Paloma Copper/Chrome



Stressless® Paris High back with footstool
Paloma Copper/Chrome
Stressless® Urban (S) table

Size matters.

Stressless® star base models are a nod to mid century design with three different back options – high back, low back and an adjustable headrest.

The high back models offer all the usual comfort features, while the low back versions invite you to gather with friends and family. Height adjustable designs allows you to increase the length of the back by up to 10cm, offering true personal comfort contained within iconic good looks.



YOUR DESIGN. Optimal comfort is also about unique design options. Our Star base models come in 3 different options, - Low, Adjustable and High back.



Stressless® London with adjustable headrest and footstool
Paloma Dark Olive/Chrome



Stressless® Tokyo High back with footstool
Silva Green/Chrome



Stressless® Metro High back with footstool
Paloma Rock/Chrome

Stressless® Tokyo with adjustable headrest and footstool
Paloma Black/Matte Black



Stressless® Bella with arm B1,
headrest and footstool
Linden Sand/Chrome with
Table Top Walnut

SOFA

It's time for complete luxury.

When choosing a new sofa, there are many things to consider. The best configuration for your living space. The material, colour and finishing touches to complement your interior. But great design is so much more than what meets the eye. Underneath the surface of a Stressless® sofa is where the real magic happens. We focus just as much on the functionality and comfort. How the sofa responds and adjusts to your body. How it supports you in every position. We have spent years perfecting our designs to bring you a sofa that your room will love, and your body and mind will thank for years to come.

Complete the look and create additional seating with a matching Stressless® recliner.





Stressless® Stella with arm S1, Paloma Copper/Chrome
 Stressless® Tokyo with adjustable headrest and footstool
 Calido Blue/Chrome

Create your dream sofa.

A sofa is many things. A place to read. A place to entertain family and friends. A place to close your eyes and enjoy a moment of calm. Our timeless designs suit all interior settings while clever in-built functionality offers unrivalled levels of comfort. Stressless® BalanceAdapt™ system allows the sofa to respond to your natural movements, adjusting the seat as you move. Recline, lean forward, lie down or put your feet up and feel how the soft and generous seat adapts to your movements. When the occasion calls for just a regular sofa, simply lock the function to stop the seat from moving.

Modular sofas, Stressless® Stella and Stressless® Bella, adapt to both your living room and your seating position.



FIND YOUR BALANCE with BalanceAdapt™. Subtle rocking motions enhance the feeling of total balance. These movements usually make all the difference between a good seat and a fantastic one.



Stressless® Stella with arm S2, headrest and footstool
 Paloma Copper/Matte Black

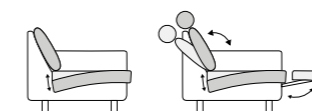
Stressless® Emma E350 Classic
Silva Green/Chrome



Stressless® Emma E350 Classic Power™
Lina Grey/Oak

Stressless® Emma sofas – with optional Power™.

The popular Stressless® Emma sofa has a modern and sleek design. Sit down, and you may not be able to get up. The in-built ErgoAdapt™ system means the sofa automatically adjusts itself to support you in all angles and positions. When lying down the sofa turns completely flat for the best possible rest. Relaxation has never been so easy.



COMFORT IN ALL POSITIONS. When sitting down, ErgoAdapt™ provides a soft landing and total comfort with a seat that automatically adjusts to your position and smallest movements. When lying down, the sofa turns completely flat for best possible rest. A power seat with the integrated footrest includes a reclining function system that provides optimal comfort and support for your body in all positions.



Stressless® Emma E200



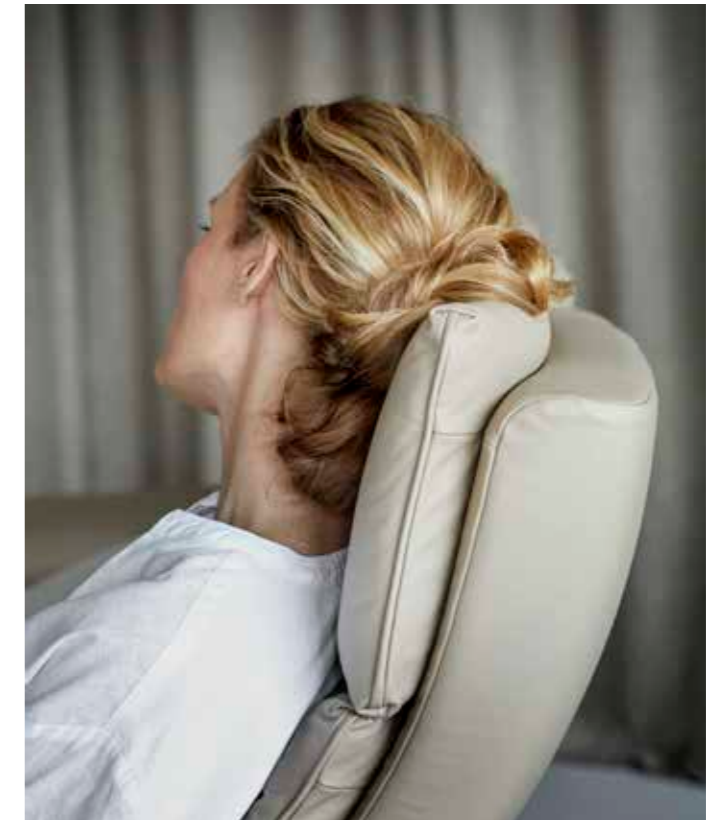
Stressless® Emma E350



Stressless® Emma E600

Creating your dream sofa is easy with Stressless® Emma. Choose between three different armrests, two cushion designs and motorized modules with integrated leg and headrests. Together with options in legs and upholstery, you can confidently create the ultimate, tailor-made sofa for your home.

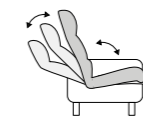
Stressless® Aurora
Paloma Shadow Blue
Stressless® Style table



Modern and inviting.

The Stressless® Aurora sofas with Plus™ system adds finesse to your living room. A modern and sleek design with soft cushioning gives Stressless® Aurora an inviting and contemporary look.

This sofa is available as a high back and a low back version with individually adjustable seats. Choose between steel or wooden legs in three different heights.



PLUS™ SYSTEM. Whether you are sitting or lying down, our unique Plus™ system provides optimal comfort and support for the lower back and head, in all positions. The lumbar support automatically adjusts as you recline. You can also choose between an active or rest position for the neck.

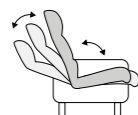


Stressless® Arion A10
Erica Grey/Black
Stressless® Style table
Black/Black

Stressless® Arion A10 and
Stressless® Double Ottoman
Paloma Rock/Black with Table Top

Stressless® Arion with Plus™ system.

Stressless® Arion adjusts to your body as soon as you take a seat. Our in-built patented Plus™ and Glide™ systems support both head and lower back, whether you sit up or lie down. It's available in a three seat, two seat and one seat sofa, and can also be combined with the Medium Corner or Sector for Home Cinema setups. Stressless® Arion also comes with a choice of high or low back.



PLUS™ SYSTEM. Whether you are sitting or lying down, our unique Plus™ system provides optimal comfort and support for the lower back and head, in all positions. The lumbar support automatically adjusts as you recline. You can also choose between an active or rest position for the neck.





Stressless® Windsor and Stressless® Mayfair (M) Classic
Paloma Almond/Walnut



Stressless® Buckingham
Paloma Copper/Oak

Stressless® Emily Wood
Paloma Fog/Oak
Stressless® View (M) Classic
Paloma Fog/Oak



Stressless® Emily with Power™.

Sleek lines and a streamlined silhouette give Stressless® Emily a clean, modern look that will fit any home and style. The contemporary and modern design of the soft cushions ooze with comfort and invite you to embrace the comfort zone of your home.

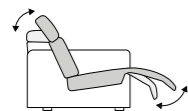
Stressless® Emily has an adjustable headrest on all modules. You can lower it for a sleek low-back sofa with perfect back support for sitting - or adjust the angle and height of the headrest for extra support to your head and neck when you want complete relaxation. Put your feet up on the LongSeat module with fixed back and leg support - or include the possibility to adjust leg and head support on one or more of the sofa seats.



Stressless® Tokyo
Pioneer Cognac/Chrome



Stressless® Emily offers a large choice of high-quality leather and fabrics, and the choice between two slim armrests with appealing details in steel or wood. The selection of covers and colours is the same as for other Stressless® recliners and sofas, making it easy to supplement with other Stressless® furniture.



Stressless® Emily with LongSeat
Paloma New Cognac/Chrome
Stressless Urban (L) table
Chrome



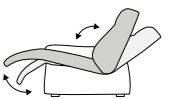
Stressless® Lucy
Paloma Rock
Stressless® Metro Low Back
Paloma Rock/Matte Black



Stressless® Lucy with Power™.

A sofa made for relaxing, Stressless® Lucy blends modern lines with retro styling. The striking piping on the soft cushioning and the streamlined features on the armrests have been designed to complement our best-selling Stressless® recliners Stressless® Metro and Stressless® Skyline.

Stressless® Lucy also comes with new functionality, containing a motor in both the seat and back. All seat modules can be individually fitted with motors to adjust the back and leg support. The functions are operated from an integrated panel, discretely concealed on the right side of your seat. Stressless® Lucy is available in a large range of leather, fabric and colours, and with two different designs on the armrest.

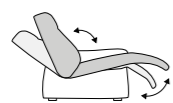




Stressless® Mary with Power™.

A truly sumptuous sofa with gentle curves and a generous look that will never go out of style. Its cushioning is extra supple and soft for added indulgence, and individual seat modules can be fitted with motors for effortless adjusting of the back and leg support. The functions are operated from an integrated panel, discretely concealed on the right side of your seat, which can easily be switched off when used as a fixed seat.

Choose between a classic upholstered armrest or an armrest with wooden details for an elegant touch. Stressless® Mary matches exquisitely with Stressless® Mayfair, one of our best-selling recliner models through the decades. With the same range of leathers, fabrics and colours available across our entire range of furniture, completing your look has never been easier.

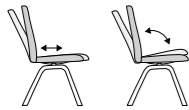


Stressless® Mary
Paloma Rock
Stressless® Mayfair (M) Classic
Paloma Rock/Black
Stressless® Style table
Black/Black

DINING

Gather round.

The dining area is the heart of the home. A place to enjoy the company of friends and family. A place to chat, share and celebrate...to remember old and to make new memories. Stressless® dining chairs are expertly designed to work with your body, not against it. The flexible seat and back follow and respond to the movements of your body in a unique way, offering a variety of positions for total comfort. With Stressless® dining chairs you can while away the hours in complete comfort.



DINE IN COMFORT. Our dining chairs have a flexible seat and back, offering a variety of positions for increased comfort. This comfort enables you to maximize your quality time with friends and family.



Stressless® Rosemary Low (L) D300 w/armrest
Silva Light Beige/Matte Chrome
Stressless® Lime Sofa
Paloma Fog/Whitewash
Stressless® Toscana T100 Table
Oak Whitewash



Stressless® Laurel High D300
Jasmine Dark Grey/Matte Black



Stressless® Laurel High D300 chair Jasmine Dark Grey/Matte Black
Stressless® Spice sofa Grace Dark Grey/Black
Stressless® Toscana T100 table Black

A chair that listens to your body.

The unique Stressless® dining chair responds to your body's movements, automatically adjusting the seat and back position, without levers or handles. Lean forward, and the chair moves to reduce the pressure under your legs while supporting your back. Lean back and enjoy the feeling as the chair back reclines and the seat slides forward, giving you a more open and comfortable sitting position.

New

Stressless® Laurel Low (L) D400

Dahlia Blue/Matte Black

Stressless® Lime Sofa

Dahlia Blue/Black

Stressless® Bordeaux table

Black Oak



Stressless® Rosemary (L) D100 Silva Light beige/Walnut
Stressless® Bordeaux table (L) Walnut

It's time for long-lasting comfort.

Dining chairs are often the most used seats in the home. Stressless® dining chairs are fully customizable, built to last and move with your body. Our four cushion designs can be personalized by you to suit your interior style and individual comfort requirements. Choose the size- medium or large. A high or low seat back? With or without armrests? Then select the chair legs, available in either a wood or steel finish. Finally, complete the look by choosing the upholstery. Our wide range of sumptuous fabrics and leathers are made using materials of the finest quality, to ensure lasting quality and comfort.



New

Stressless® Laurel Low (L) D200 w/Armrest
Calido Dark Grey/Black Oak
Stressless® Bordeaux round table Black Oak



Stressless® Laurel High (L) D200
Calido Dark Grey/Black Oak

Our comfortable Stressless® dining chairs are a great option for a home office. The unique way they respond to your body's movements means they help position the body perfectly as you sit at your desk. Add an extra dining chair to use in your home office, and you have an extra seat when guests arrive.



It's time to create.

Your perfect Stressless® home is only complete when you have added your personal taste and your individual needs. After all, it is your home.

That's why our dining chairs, home office chairs, sofas and recliners come in a large range of leather, fabrics – and choices of armrests and bases. Visit your local retailer or explore our endless opportunities at [Stressless.com](https://www.stressless.com).



View with the Stressless @home App.

You can also download our Stressless @home App, personalise your favorite piece of our furniture, and actually place it in the living room, kitchen or office at home with the help of your phone or tablet. The app provides you with pictures of all our chairs and sofas and lets you choose your preferred materials, colours and bases. It doesn't get easier:

- Download the application from Apple Store or Google Play
- The app will automatically download all available Stressless® products at startup
- Choose model and style it at your preference
- Choose "view at home", and see your Stressless® chair in your home through the camera.

Stressless® – the choice is yours.

The right look is at least as important for us as they are for you. So we have created many different styles and configurations for you to choose between. Our aim is for you to be able to customise each item of furniture so it fits you and your needs perfectly. Choose between our wide selection of leather and fabric covers, and bases in a range of metal and wood finishes. The secret to all our models is the clever application of patented design features that have been specially developed to provide you with a superb comfort experience.



Furniture suites.

We always think holistically when we design our furniture. Which is why you will find chairs and sofas that match. To add further excitement to the look of your lounge suite, why not combine fabric-covered chairs with a leather sofa – or vice versa?



The classic Stressless® with separate footstool.

Each Stressless® has been developed to be the world's most comfortable place to sit. And our matching footstools have been designed to maximise the Stressless® experience. Correct leg support is a vital element in how comfortably you sit. Because your legs move forward and down when you lean back, we added the patented Glide™ function to the footstool, which is how we made the world's most comfortable recliner even better.

New! Stressless® with Power™.

Perhaps you are looking for the perfect recliner or sofa, or maybe you have been dreaming of a chair with a practical footrest elegantly hidden beneath the seat. All our models with Power™ have the famous Stressless® comfort, and we guarantee that you will find the perfect position for relaxing every time. And, of course, you can tailor the design of your furniture to suit you and your home.

All our Stressless® recliners with the Classic base can be supplied with Power™. You can choose to have a motorised footrest and a body-weight adjustable backrest, or a chair with a motorised back and footrest.

The Power™ function is also available on some of our sofa models, as well as our latest recliners: the Stressless® Sam and the Stressless® Scott.



Stressless® Aura

	W	H	D	SH*
Signature				
S	78	107	82	46
M	82	111	82	46
L	91	112	87	48
	54	47	46	
Classic				
S	72	104	81	43
M	77	110	81	45
L	85	111	86	47
	54	44	46	
Classic Power™/Power Leg™				
M	77	110	81-135	45
L	85	111	86-140	47
Office				
M	77	118-125	78	53-60



Stressless® Consul

	W	H	D	SH*
Signature				
S	78	97	70	41
M	82	102	72	42
L	91	102	79	44
	54	41	39	
Classic				
S	70	94	70	38
M	76	100	71	40
L	85	100	77	42
	54	38	39	
Classic Power™/Power Leg™				
M	76	100	74-130	45
L	85	100	77-131	46
Office				
M	76	112-119	71	47-54



Stressless® Live

	W	H	D	SH*
Signature				
S	79	102	76	44
M	83	105	76	44
L	92	105	81	46
	57	42	40	
Classic				
S	77	99	76	41
M	81	103	76	42
L	90	103	78	45
	57	39	40	
Classic Power™/Power Leg™				
M	81	103	76-131	45
L	90	103	78-131	47
Office				
M	81	113-120	72	49-56



Stressless® Skyline

	W	H	D	SH*
Signature				
S	78	98-108	72	43
M	82	99-109	72	44
L	91	100-110	79	46
	54	42	42	
Classic				
S	77	95-105	72	40
M	81	98-108	72	42
L	90	98-108	78	44
	54	39	42	
Classic Power™/Power Leg™				
M	81	98-108	77-132	47
L	90	98-108	80-134	47
Home Office				
M	81	106-113	72	48-55



Stressless® Sunrise

	W	H	D	SH*
Signature				
S	79	103	73	43
M	83	105	74	44
L	92	105	80	45
	57	42	40	
Classic				
S	75	100	73	40
M	79	103	73	42
L	88	103	78	43
	57	39	40	
Classic Power™/Power Leg™				
M	79	103	78-132	47
L	88	103	78-131	47
Home Office				
M	76	111-117	74	49-56



Classic elevator ring.

The Stressless® elevator ring adds an extra 3.5 cm to the seat height and is your key to comfort if you require extra height. Simply snap it on: no tools necessary. The Stressless® footstool elevator ring adds 3.5 cm to the height of the footstool. Fits all footstools produced after 1 March 2004

Hard Floor Protector

Self-adhesive felt for use under the base to protect your floor. For the Classic base.



Stressless® Magic

	W	H	D	SH*
Signature				
S	78	101-111	76	45
M	82	102-112	78	45
L	91	102-112	84	47
	55	46	56	
Classic				
S	77	98-108	76	42
M	81	101-111	77	44
L	90	101-111	82	45
	55	43	56	
Classic Power™/Power Leg™				
M	81	101-111	76-130	47
L	90	101-111	78-131	48
Office				
M	76	109-116	76	49-56



Stressless® Mayfair

	W	H	D	SH*
Signature				
S	79	102	73	44
M	83	102	74	44
L	92	103	79	47
	55	41	39	
Classic				
S	75	99	73	41
M	79	101	73	42
L	88	102	77	45
	55	38	39	
Classic Power™/Power Leg™				
M	79	101	77-130	46
L	88	102	76-131	46
Office				
M	79	111-118	70	46-53



Stressless® Reno

	W	H	D	SH*
Signature				
S	79	99-109	75	43
M	83	100-110	76	44
L	92	100-110	80	44
	55	43	41	
Classic				
S	75	96-106	75	40
M	79	98-108	75	42
L	88	98-108	78	44
	55	40	41	
Classic Power™/Power Leg™				
M	79	98-108	78-131	47
L	88	98-108	77-131	47
Office				
M	79	108-115	75	48-55



Stressless® View

	W	H	D	SH*
Signature				
S	78	108	78	42
M	82	109	81	42
L	91	110	85	46
	57	43	47	
Classic				
S	78	105	78	39
M	79	109	81	41
L	91	109	83	44
	57	40	47	
Classic Power™/Power Leg™				
M	79	109	77-134	46
L	91	109	82-134	47
Office				
M	79	117-124	80	50-57



Stressless® Wing

	W	H	D	SH*
Signature				
S	80	99	71	43
M	84	103	72	44
L	93	104	78	45
	54	41	38	
Classic				
S	72	96	71	40
M	76	101	71	42
L	85	102	76	44
	54	38	38	
Classic Power™/Power Leg™				
M	76	101	74-129	46
L	85	102	77-131	46
Office				
M	76	111-118	72	47-54

Adjustable headrest

Footstool

* Seat height

All measurements in cm. Sizes of individual products may vary by up to 3cm due to the handmade nature of the product.



Stressless® Sam

W	H	D	SH*
92	117	96-182	51



Stressless® Sam wood

W	H	D	SH*
92	117	96-182	51



Stressless® Scott

W	H	D	SH*
76	117	94-181	51



Stressless® London



Stressless® Metro



Stressless® Paris



Stressless® Tokyo

Stressless® London / Stressless® Metro / Stressless® Paris

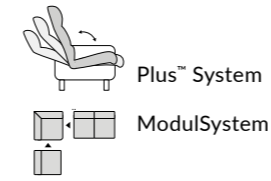
	L	H	D	SH*
Adjustable headrest	80	98-108	75	46
High back	80	111	74	46
Low back	80	86	72	46
Footstool	54	42	41	
Adjustable headrest Office	80	109-126	68	48-55
High back Office	80	121-128	70	48-55
Low back Office	80	97-104	69	48-55

Stressless® Tokyo

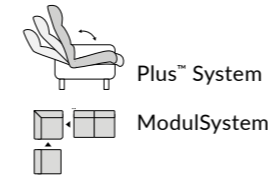
	L	H	D	SH*
Adjustable headrest	80	99-109	76	47
High back	80	110	81	47
Low back	80	85	77	47
Footstool	54	46	46	
Adjustable headrest Office	80	109-126	68	49-56
High back Office	80	120-127	70	49-56
Low back Office	80	95-102	69	49-56

Adjustable headrest / * Seat height

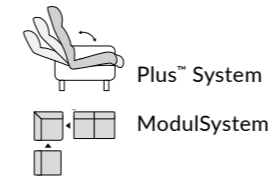
Stressless® Arion A10



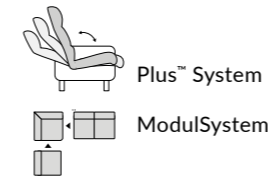
Stressless® Arion A20



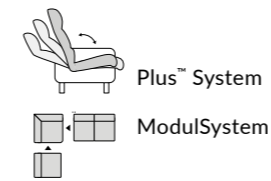
Stressless® Aurora



Stressless® Wave



Stressless® Eldorado



Stressless® Buckingham



Stressless® Windsor



Stressless® Emma E200



Stressless® Emma E350



Stressless® Emma E600



Stressless® Bella



Stressless® Stella



Stressless® Emily



Stressless® Lucy



Stressless® Mary



Stressless® Home Cinema.

You move more than 300 times during the length of a movie. This might sound exhausting, but don't despair – Stressless® seating is designed to adjust to your every movement. The spacious, soft seats of your Stressless® Home Cinema seating, combined with a Stressless® ottoman, ensure an optimal movie experience.

Regardless of how much space you have available for your home cinema setup, our ingenious flexible modular designs ensure that there's always space for a Stressless®.

Find out more about the many options available at stressless.com



Stressless® Arion A10 / Stressless® Arion A20



Stressless® Wave

The Stressless® Sector (SC) / Sector Arm (SCA) is upholstered in the same way as the sofa and conceals a storage space beneath the top. The Sector / Sector Arm also functions as an armrest, which is why setups with Sector/ Sector Arm tables should be treated as a single, fixed unit.

DINING

Stressless® Laurel D200



Low back Low back (L) Low back (L) with arm High back High back (L) High back (L) with arm

Stressless® Rosemary D100



Low back Low back (L) Low back (L) with arm High back High back (L) High back (L) with arm



Leg options	D100			D200			D300			D400			SH*
	W	H	D	W	H	D	W	H	D	W	H	D	
Low	50	90	56	45	90	56	50	90	56	46	90	56	48
Low (L)	57	92	59	49	92	59	57	92	59	53	92	60	49
Low (L) arm	58	92	59	58	92	59	58	92	58	58	92	58	49
High	50	105	57	45	105	57	50	105	58	46	105	58	48
High (L)	57	105	60	49	105	60	57	105	60	53	105	60	49
High (L) arm	58	105	60	58	105	60	58	105	60	58	105	60	49



Stressless® Lime

L: 195 H: 90 D: 84 SH*: 54



Stressless® Spice

L: 195 H: 90 D: 84 SH*: 54

Wood colour: Chair, Sofa and Table**



Oak natural White washed oak Walnut Black

Steel colour: Chair



Chrome Matte Chrome Matte Black

* Seat height

** Stressless® Toscana and Madeira are only available in Natural, Whitewash and Black.



Stressless® Bordeaux Round table

Ø: 125 H: 74



Stressless® Bordeaux Rectangular table

L: 175 H: 74 D: 100
L: 230 H: 74 D: 100



Stressless® Toscana

L: 175 H: 73 D: 95



Stressless® Madeira

L: 175 H: 73 D: 95



Stressless® Laurel Low D400
Paloma Copper/Matte Black
Stressless® Bordeaux round table
Black Oak

TABLES AND OTTOMANS



Stressless® Urban (L)

W: 90 H: 48

The stylish glass table is designed to match Star base models. Select from chrome or matte black finishes.



Stressless® Urban (S)

W: 55 H: 48



Stressless® Enigma

W: 90 H: 44

A stylish glass table with base in chrome.



Stressless® Coner table

W: 69 H: 48 D: 60

This practical table is perfect for placing between a pair of Stressless® recliners. Also ideal for any corner setup or home cinema arrangement.



Stressless® Style tables

W: 137 H: 47 D: 60

Sofa table and side table, available in several colour combinations. The slight difference in height means that the tables can be easily combined in different ways, either standing apart or close together. The tabletop is made from MDF with a melamine surface and is available in White, Black and Cream. The wooden legs are available in Black, Natural and Brown.



W: 55 H: 52



Stressless® Windsor table

W: 132 H: 48 D: 70

Made from beech. Available in Natural or stained in the following colours: Oak, Walnut, Teak, Brown, Wenge, Grey, Whitewash and Black.



Stressless® Ellipse table

W: 49 H: 48-71 D: 38

This flexible, easy-to-move table is ideal, since it keeps everything you need within easy reach while you are in your "comfort zone" (adjustable).



Stressless® USB table A

W: 52 H: 50-73 D: 42

A versatile table with a USB port, this fits all Stressless® chairs perfectly. Available in various combinations of glass or wood, with a black or chrome stem (adjustable).



Stressless® USB table B

W: 51 H: 50-73 D: 55



Stressless® Easy Armrest table

W: 25 H: 10 D: 23

This smart table has been designed for the Stressless® Arion, Stressless® Wave and Stressless® Emma 200. Simply place the table on the armrest to provide a convenient extra surface.



Stressless® Computer table

W: 41 D: 31

This table provides a good working position and remains independent of your movements. Simply swing it to the side and fold it down when not in use. Can only be fitted to Classic/Classic Power™ base recliners.



Stressless® Swing table

W: 28

This table remains independent of your movements and can be simply swung aside when not in use. Can only be fitted to Classic/Classic Power™ base recliners.



Stressless® Modern and Stressless® Soft ottoman

W: 60 H: 44 D: 60

W: 51 H: 44 D: 40

Our ottoman is ingenious in at least two ways. Firstly, it features a built-in tilt system, which ensures that the angle of the ottoman is adjusted to your sitting position. And secondly, it has room for all your extras under its removable top. Available in two sizes.

W: 64 H: 44 D: 70

W: 53 H: 44 D: 49



Stressless® Stella and Stressless® Bella ottoman

W: 90/75 H: 44 D: 57

A sleek footstool perfectly designed to match our Stella and Bella sofas. Compliment with an optional table. Available in 2 sizes.



Stressless® Double ottoman

W: 119-154 H: 44 D: 61

This large ottoman offers ample space to put your feet up, while the storage space conceals a tabletop that can be placed on the ottoman when needed.

Stressless® wood colours.

Ekornes uses rotary cut beech veneer in all its moulded furniture components. Lightly steamed beech is used for solid wood components. The hardness of the wood makes beech furniture extremely durable, and the timber we use is a renewable resource. Beech is a natural material and variations in its pattern, colour and texture make each piece of furniture unique. Although beech is used for both solid and moulded components, structural differences may be visible.



Whitewash Oak Walnut Teak Brown Wenge Black Grey

Stressless® Leather and Fabric Care kits.

Ekornes offers its own leather and fabric (including microfibre) care kits to match the high quality of our furniture.

The Stressless® Leather Care kit (medium/large) contains a leather cleaner and protection cream. Stressless® Leather Care Wipes are also available. For the leather quality Pioneer there are our own cleaning and care products: Stressless® Cleaning & Revitalizing Pioneer Leather Kit.

For maintenance, and to make the leather more resistant to stains, the protective cream should be applied to all your recliner's leather surfaces when new. We recommend that you clean the leather with Stressless® leather cleaner at least once every six months to keep your leather looking its best, removing stains regularly and ensuring long leather life. Always apply the protective cream after cleaning.

The Stressless® Fabric Care kit contains a fabric cleaner, a stain remover and an Ox cleaner. This kit contains everything you need to clean your furniture in minutes without removing the fabric cover. For resistant stains, use the fabric cleaner together with the stain remover and Ox cleaner.

These are the only cleaning products recommended by Stressless®. Stressless® accepts no responsibility if cleaning products other than those recommended by Ekornes are used and cause damage to the leather.



All great choices, naturally.

Being one of the world's largest premium furniture manufacturers comes with responsibility. All our leather is manufactured in keeping with current laws and guidelines for animal welfare, health, safety and the environment. Here, we work alongside recognised international institutions to ensure that we are always up-to-date.

Our inspectors also take part in the leather selection process from our chosen tanneries. We maintain the highest of standards here, so that you always make a great choice – regardless of texture, softness, colour and how you want the leather to look and feel. Today and tomorrow. For this, we offer many types of leather – from the most exclusive and delicate to the more robust quality.

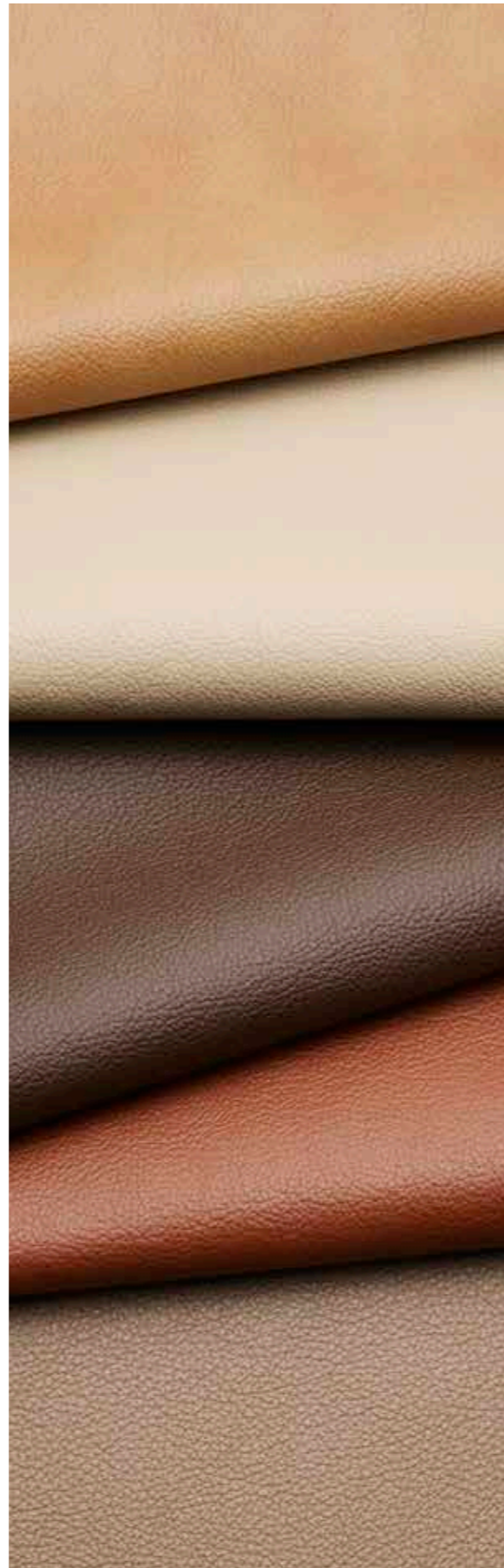
NOBLESSE is the most exclusive leather quality offered by Ekornes. It is a full grain semi-aniline, which means that it is dyed all the way through and has only a thin protective topcoat. This allows the leather to keep the natural softness and lustre that characterises a first-class furniture leather. A natural material like Noblesse retains its original grain and structure. Minor colour nuances and skin blemishes may also occur. Such individual details could lead to slight variations in different parts of the furniture cover. Although the topcoat provides a measure of protection, Noblesse is the most delicate of the leather qualities that Ekornes uses. It absorbs moisture easily, and is more vulnerable to wear and tear, heat, sunlight, spills and perspiration. Regular maintenance is important to keep its attractive appearance.

PIONEER is a luxurious full grain aniline pull-up leather. This exclusive and delicate quality retains the full original grain of the leather, and is treated with oils, waxes and transparent dyes. This enhances the soft touch and natural appeal, offering deep, vibrant colours and a beautiful lustre. The full-bodied leather sensation and natural transparent look will gain patina and become even more beautiful with age. On an exclusive leather like Pioneer you will find natural characteristics like colour nuances, difference in structure, marks and skin blemishes. The delicate finish gives an exceptional comfort and a striking look, but offers just a light protection. Pioneer absorbs moisture easily and is vulnerable to heat, sunlight, spills and perspiration. Regular care and precautions are important to keep the luxurious and elegant appearance.

PALOMA is a slightly corrected leather with a combination of dyes and pigments that smooths down some of the structure (the grain pattern) of the leather. The grain structure in Paloma may however vary a little at some parts of the furniture and also minor colour nuances may appear in the leather. Natural marks, scars and insect bites are natural and will appear in Paloma. A thin coat of lacquer gives Paloma some protection and simplifies cleaning, but Paloma does not have the same heavy duty quality and protection as Batick and Cori. Due to its soft, natural and comfortable expression, Paloma is a very popular choice.

CORI is a corrected, pigment improved and grain embossed upholstery leather. Cori has a substantial body and a distinct pebbled grain. Most of its natural marks are removed. Cori has a tip-shine which adds depth and character to the surface. Some colours have two-tone/ tone on tone-effect. A protective layer of lacquer simplifies cleaning. Cori is a wise choice if you want leather with excellent utilisation properties, a robust structure and an exclusive look.

BATICK is a corrected, pigment improved and grain embossed upholstery leather, which has had most of its natural marks removed. Batick may have a two-tone colour effect to liven up the surface. Batick is resistant to fading, although changes in colour will occur over time due to use and exposure to light. A protective layer of lacquer simplifies cleaning. Simple cleaning, excellent utilisation properties and a favourable price make Batick a good choice.



Stressless® fabric collection.

Our specially selected fabric collection meets the furniture industry's strictest requirements. Stressless® fabrics are produced in accordance with strict environmental conditions and are treated for heavy-duty use, light tolerance and inflammability. Choose from our wide selection of colours to match your interior.

Please note that colour changes will occur over time as a result of use and the effects of exposure to light. You should always protect your furniture from direct sunlight. To prolong the life and appearance of your recliner or sofa, the fabric upholstery should be regularly vacuumed, professionally dry-cleaned or cleaned with our approved Stressless® Fabric Care kit.



CALIDO is a wool felt fabric with an exclusive appearance, which feels comfortable and soft next-to-the skin. It is available in a varied and exclusive colour palette. 80% wool, 20% polyamide.

DAHLIA has a slight sheen to its surface, which gives the fabric an exclusive and elegant look. The fabric feels soft, cosy and inviting. The attractive colour palette emphasises the classic and timeless appeal of the fabric. 100% polyester.

DINAMICA is a well-known microfibre-quality fabric with an appearance resembling chamois leather. This is soft and very comfortable, breathable and non-static. Easy to keep clean and highly wear resistant. 88% polyester, 12% polyurethane.

ERICA is a modern fabric with a rough and coarse texture, but soft and comfortable to the touch. Some of the colours have a two-tone effect, making them perfect for creating exciting combinations. 100% polyester.

FARON is a bouclé fabric. It has a rough, coarse structure but still feels soft and comfortable against the skin. The weave of this fabric makes it extremely strong and hardwearing, with good durability. The fabric has an even colour tone and is available in a broad range of colours. Pile: 100% polyester, Ground: 50% polyester, 50% polyacryl.

FREESIA has a strong structure. The weave includes threads in different shades and with various levels of shine, which provides attractive, subtle variations in the surface. 85% polyester, 15% cotton.

GRACE is a velour with a medium length pile. The soft, silky texture has a fine sheen and provides an attractive interplay of colours. Grace is hardwearing, comfortable to sit on and easy to keep clean. 92% polyester, 5% cotton, 3% latex.

IVY is a flat-weave fabric with subtle nuances in the surface. The attractive two-tone effect gives the fabric a comfortable look. Ivy offers excellent durability and is easy to keep clean. 100% polyester.

JASMINE has a fine, softened structure which makes the surface appealing. We've selected a range of dusty, subdued colours that can easily be combined with colours from our leather collection. 90% polyester, 10% cotton.

KARMA is a flatwoven fabric with multi-coloured thread, which provides a soft and harmonic melange effect and a vivacious appearance. 100% polyester.

LINA Thanks to its interwoven contrast colours, Lina has an exciting look & feel. The fabric feels soft, cosy and inviting. The elegant colour palette combines beautifully with the Stressless® leather colours. 54% polyester, 30% cotton, 16% viscose.

LINDEN has a strong structure. The weave includes threads in different shades and with various levels of shine, providing attractive, subtle variations in the surface. 53% polyolefinic, 26% acryl, 11% wool, 8% polyester, 2% polyamid.

SILVA / SILVA MOON is a pure and timeless wool fabric that feels comfortable next-to-the skin. It is available in a muted and classic colour palette. Silva: 76% wool, 13% viscose, 6% polyamide, 5% linen. Silva Moon: 61% wool, 21% viscose, 9% polyamide, 9% linen.

For more information on fabrics and leather colours, visit your dealer or [stressless.com](https://www.stressless.com)



stressless.co.nz

